

Product Information Packet

November 8, 2016

Data shown is for the current revision model #. Ensure your nameplate model # matches.

Model Number:	5KS365XAA2034C
Catalog Number:	M9532
Instruction Manual:	GEI-56128
Connection Diagram:	GEM2034E-FIG7
Outline Drawing:	239C6205CP

Accessory Connection Diagrams			
Bearing Thermocouple:	None	Heater:	None
RTD:	None	Thermistor:	None
Thermostat:	None	Winding Thermocouple:	None
Bearing RTD:	None		

Table of Contents

Specification	01
Performance Characteristics	02
Outline Drawing	03
Connection Drawing(s)	04
Spare parts	05



Marks:

MODEL NUMBER:	5KS365XAA2034C	Estimated Weight:	1020 Lbs
Outline Drawing:	239C6205CP	Time Rating:	CONT
Connection Diagram:	GEM2034E-FIG7	Enclosure:	TEFC
Instruction Book:	GEI-56128	Encl Construction:	841
Design Code:	36BD1227A	Ambient Max(°C):	40
Type:	KS	Alt Ambient Max(°C):	--
Frame:	365TC	Insulation Class:	H
Phases:	3	NEMA Design:	B
Poles:	4	Nominal Efficiency:	95.4 %
Output Power:	75HP 55.5KW	Guaranteed Efficiency:	95.0
RPM:	1785	3/4 Load Efficiency:	95.5
Voltage:	460	KVA Code:	G
Hertz:	60	Max KVAR:	26.6
Amps - FL:	89.2	Power Factor:	82.5
Service Factor:	1.15	Bearing - DE:	6314ZZC3
Alt Service Factor:	--	Bearing - ODE:	6314ZZC3

Enclosure is Totally Enclosed Fan-Cooled

Stamped Nameplate Notes:

IEEE-STD-841-2009
 DE BRG 70BC03JPP3, ODE BRG 70BC03JPP3
 STAMP NP249A5564P051 AS BELOW:
 MODEL:5KS365XAA2034C S/N: XXX
 CSA CERTIFIED CSA09.2216219 FOR EX NA IIC 200 C GC
 CL 1 ZONE2 AEX NA IIC 200C;CL 1 DIV2 GRP ABCD 200C
 IN -25C <= AMB <= 40C, 1.0 SF ON SINE-WAVE PWR
 SURF TEMP 260C AT 1.15SF ON SINE-WAVE PWR
 OR 200 C VT OR 230 C CT OR 200 C CHP PWM CONTROL
 ALTERNATE RATING FOR PWM CONTROL 1.0SF 40C AMB
 VT 0-60 HZ, CT 10-60 HZ, CHP 60-90 HZ.

Additional Information:

4P - T EXTN
 PAINTED FRAME ID & SHAFT,
 FAN COVER INSIDE & ODE E/S OUTSIDE
 C FACE ON DE
 346 CU IN - 3.00" NPT
 INPRO SEAL BOTH ENDS
 OIL RESISTANT SLEEVING ON LEADS
 .0015" TIR SHAFT RUNOUT
 ROUTINE TEST REPORT AND 5 POINT VIBRATION TEST
 REPORT INCLUDED IN C/B
 COPPER WASHER UNDER HEADS OF BEARING CAP BOLTS,
 APPLY TITE-SEAL (A50CD427A) ON BEARING CAP SCREWS,
 RABBETS AND PLUG THREADS.
 ROUND FRAME

GROUND PAD
VERTICAL MOUNT SHAFT DOWN WITH DRIP COVER

Performance Characteristics

1st Winding 1st Connection

Design: 36BD1227A

Marks:

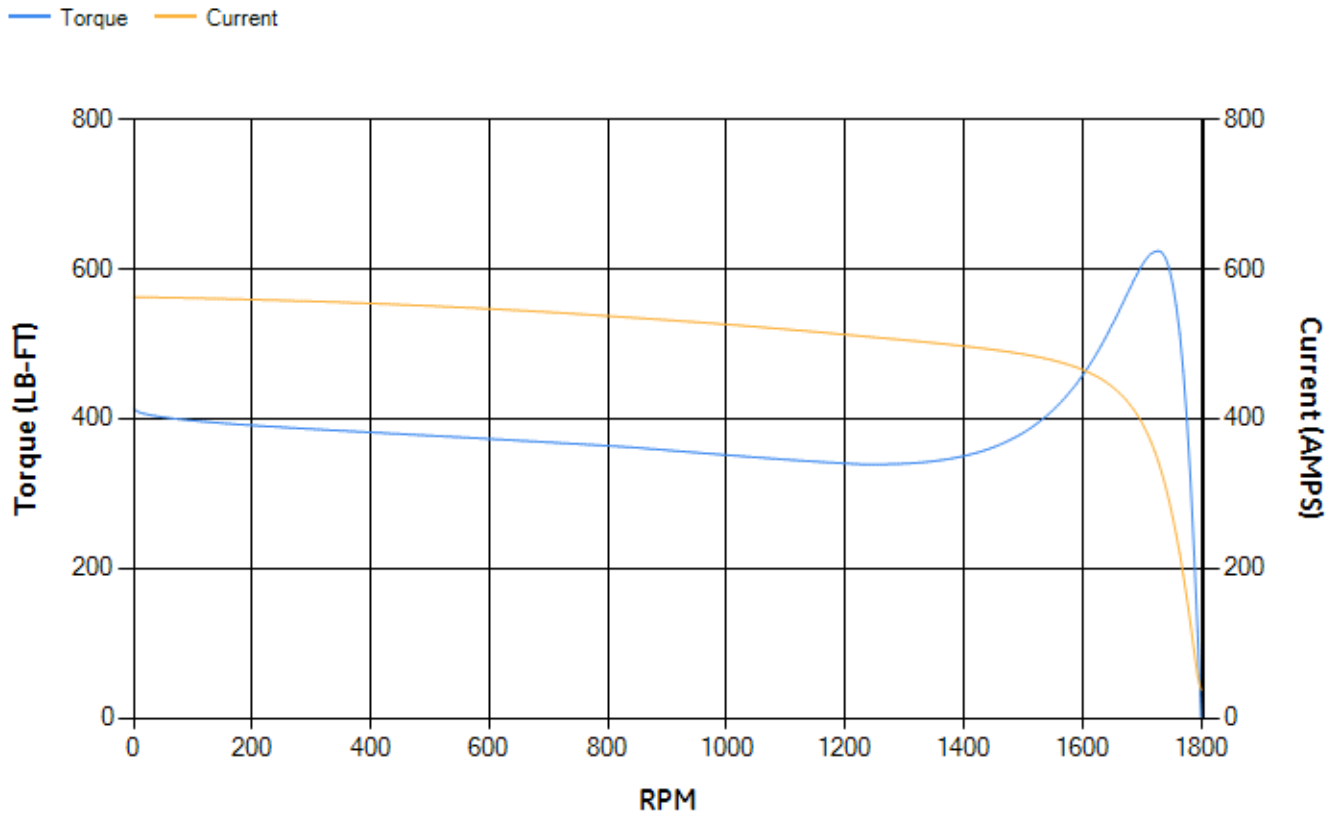
LOAD %	125.0	115.0	100.0	75.0	50.0	25.0	0.0
% EFF	94.85	95.06	95.52	95.53	95.19	92.83	0.00
% PF	84.62	83.96	82.42	77.56	67.04	44.23	2.93
AMPS	109.33	101.14	88.97	71.05	55	42.75	37.05

TORQ(FL)#FT	220.86	TORQ(LR)%FL	187.4	TORQ(BD)%FL	281.78
AMPS(LR)	562.55	PF AT START	0.32		

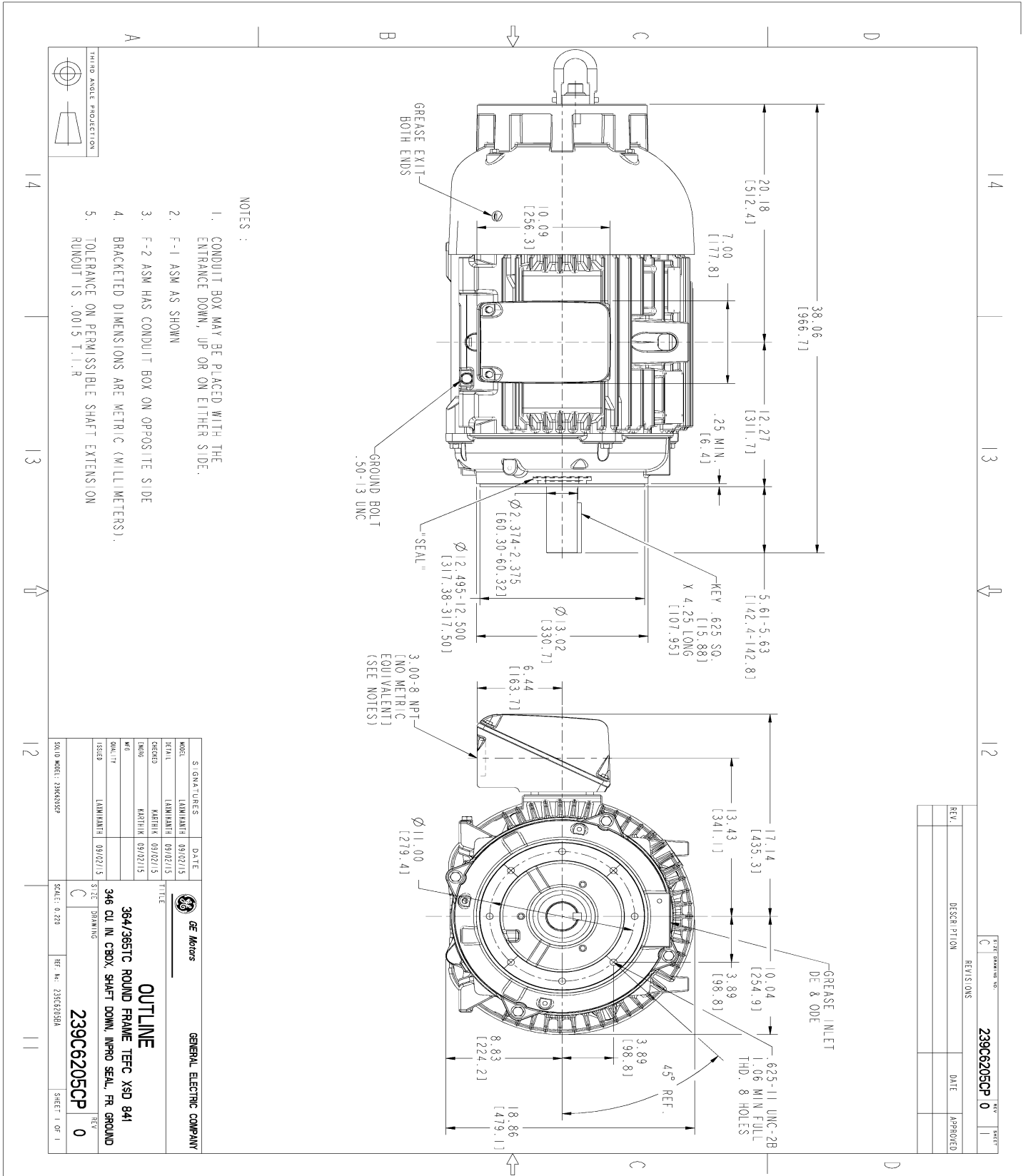
This motor is capable of two cold or one hot start with a maximum connected load inertia of 1432 Lb-Ft Sq (60.29 Kg-meter Sq)at 100% voltage, where the load torque varies with the square of the speed. Acceleration time with maximum inertia and the above load type is 27 seconds. Safe stall time at 100% voltage is 65 seconds cold, 32 seconds hot. Rotor inertia is 15.28 Lb-Ft Sq (0.64 Kg-meter Sq).

Open Circuit A-C:	0.626	Short Circuit D-C:	0.025
Short Circuit A-C:	0.034	X/R Ratio:	9.412
Stator Slots:	60	Rotor Slots:	50

Speed Torque Current Curve (First Connection, First Speed)



Marks:

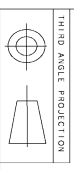


NOTES :

1. CONDUIT BOX MAY BE PLACED WITH THE ENTRANCE DOWN, UP OR ON EITHER SIDE.
2. F-1 ASM AS SHOWN
3. F-2 ASM HAS CONDUIT BOX ON OPPOSITE SIDE
4. BRACKETED DIMENSIONS ARE METRIC (MILLIMETERS).
5. TOLERANCE ON PERMISSIBLE SHAFT EXTENSION RUNOUT IS .0015 T.I.R

REV.	DESCRIPTION	DATE	APPROVED

239C6205CP 0



THIRD ANGLE PROJECTION

SIGNATURES	DATE
DESIGNER	09/02/15
CHECKED	09/02/15
DRAWN	09/02/15
DATE	09/02/15

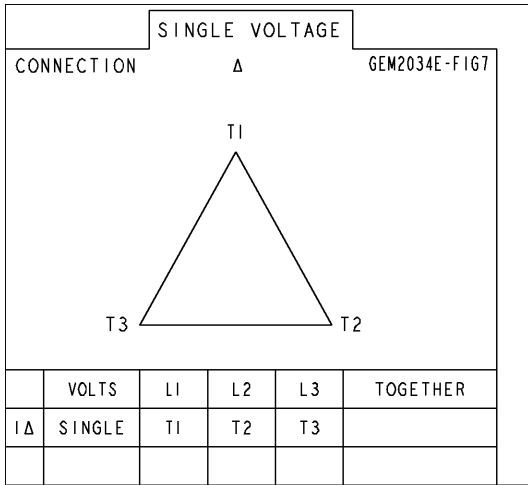
364/365TC ROUND FRAME TEFC XSD 941
346 CU IN CBOX SHAFT DOWN, INPRO SEAL, FR GROUND

239C6205CP 0

SCALE: 0.250 REF. No. 239C6205BA SHEET 1 OF 1

Marks:

Connection Diagram
GEM2034E-FIG7



End shield Assembly		
Part Description	DE Side Part#	ODE Side Part#
End Shield	115E4253AG1	115E4250LW1
Bearing	235A2516AF01	235A2516AF01
Slinger/Inproseal	235A4575GS3	235A4575GS3

Fan & Fan Cover Assembly	
Part Description	Part#
Fan	159C7100AA1
Fan Cover	128D6811AB1

Conduit & Accessories Box Assembly	
Part Description	Part#
Conduit Box	149C4429AA2

Mechanical Accessories	
Part Description	Part#
Brake	
Tachometer	