

Product Information Packet

April 26, 2017

Data shown is for the current revision model #. Ensure your nameplate model # matches.

Model Number:	5KS445DAJ6020A
Catalog Number:	V4529
Instruction Manual:	GEK-95352
Connection Diagram:	GEM2034E-FIG19
Outline Drawing:	148CB44VMJKLGLA0001

Accessory Connection Diagrams			
Bearing Thermocouple:	None	Heater:	3027JE-1C
RTD:	None	Thermistor:	None
Thermostat:	3027JE-2A	Winding Thermocouple:	None
Bearing RTD:	None		

Table of Contents

Specification	01
Performance Characteristics	02
Outline Drawing	03
Connection Drawing(s)	04
Spare parts	05



Marks:

MODEL NUMBER:	5KS445DAJ6020A	Estimated Weight:	2950 Lbs
Outline Drawing:	148CB44VMJKLGLA0001	Time Rating:	CONT
Connection Diagram:	GEM2034E-FIG19	Enclosure:	WPI
Instruction Book:	GEK-95352	Encl Construction:	OPEN
Design Code:	44BD1168AB	Ambient Max(°C):	40
Type:	KS	Alt Ambient Max(°C):	--
Frame:	L445TP20	Insulation Class:	H
Phases:	3	NEMA Design:	B
Poles:	4	Nominal Efficiency:	95.8 %
Output Power:	250HP 185KW	Guaranteed Efficiency:	95.0
RPM:	1780	3/4 Load Efficiency:	96.1
Voltage:	460	KVA Code:	G
Hertz:	60	Max KVAR:	83.0
Amps - FL:	293.0	Power Factor:	83.5
Service Factor:	1.15	Bearing - DE:	6217C3
Alt Service Factor:	--	Bearing - ODE:	235A2536AB01

Enclosure is Weather Protected One

Stamped Nameplate Notes:

HTR LDS HE1-HE2 115V 145W
 ROT CCW FACING ODE LEAD/PH SEQ 1-2-3/1-2-3
 THERMOSTAT LEADS TB1-TB2 TRIP
 INVERTER DUTY PER NEMA MG1 PART 31
 ALTERNATE RATING FOR PWM CONTROL:1.0SF 40C AMBIENT
 VAR TORQUE RANGE 5-60 HZ
 SUITABLE FOR 200 HP, 380V, 50 HZ WITH
 283.0 AMPS AND 1480 RPM AT 1.0 SF

Additional Information:

4 POLE, VERT HOLLOW SHAFT HIGH THRUST (2D)
 SPECIAL BALANCE
 1260 CU IN - 2(4.00" NPT)
 BEARING LIFE 8760 HRS AT 21100 LB THRUST
 C/B GRD PLATE
 OIL RESISTANT SLEEVING ON LEADS
 N.C. TRIP TSTAT LDS TO MAIN CONDUIT BOX
 115V HTR LDS TO MAIN CONDUIT BOX
 COUPLING NOT INCLUDED IN BOM, WILL BE
 ORDERED SEPERATELY
 PART WINDING START
 AEGIS GROUNDING RING MOUNTED ON LOWER END BEARING CAP
 GROUND PAD ON FRAME
 INSULATED LOWER HALF COUPLING

Performance Characteristics

1st Winding 1st Connection

Design: 44BD1168AB

Marks:

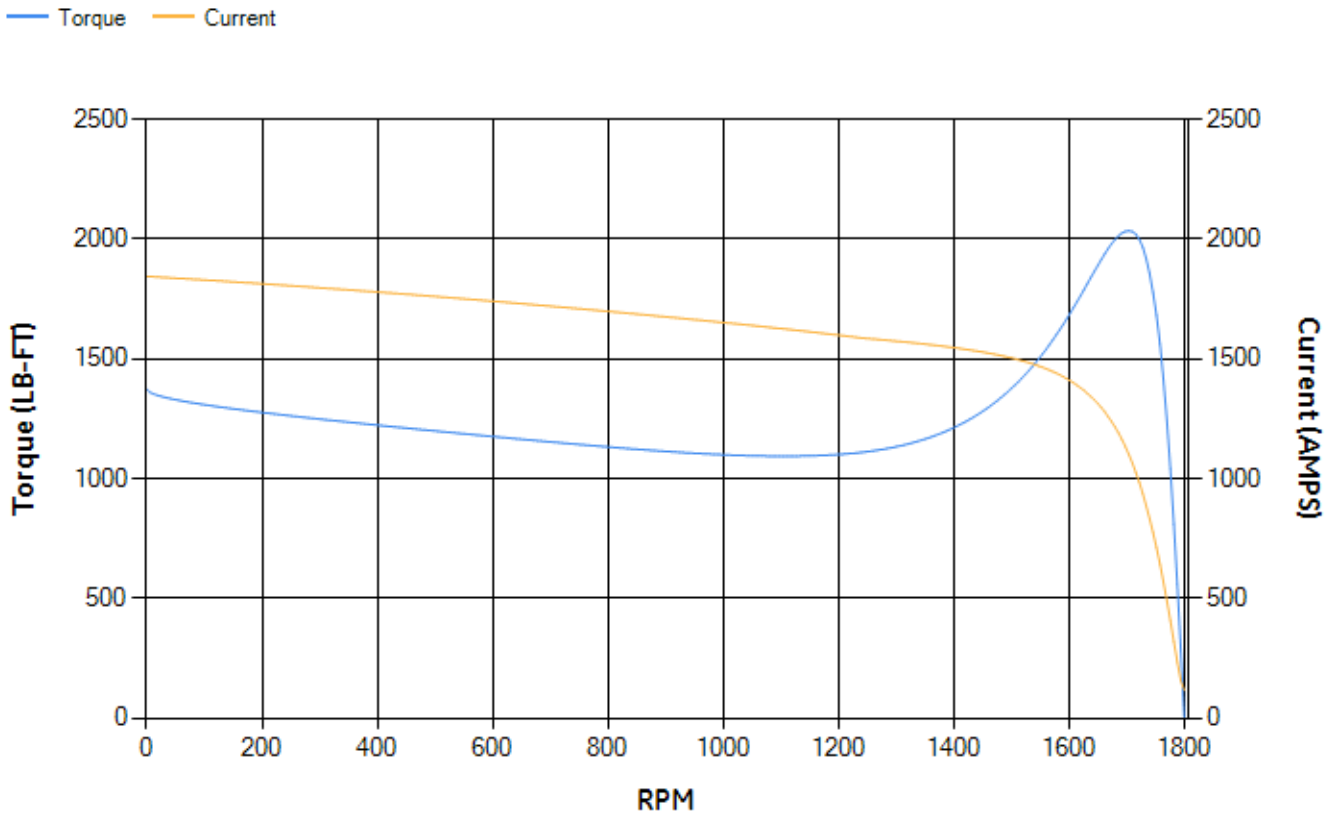
LOAD %	125.0	115.0	100.0	75.0	50.0	25.0	0.0
% EFF	94.84	95.02	95.43	95.34	94.83	92.07	0.00
% PF	85.59	85.06	83.76	79.42	69.57	47.02	3.76
AMPS	360.35	332.91	292.73	231.76	177.33	135.1	115.81

TORQ(FL)#FT	736.65	TORQ(LR)%FL	186.38	TORQ(BD)%FL	275.64
AMPS(LR)	1844.07	PF AT START	0.32		

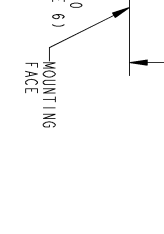
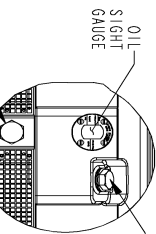
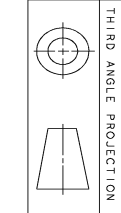
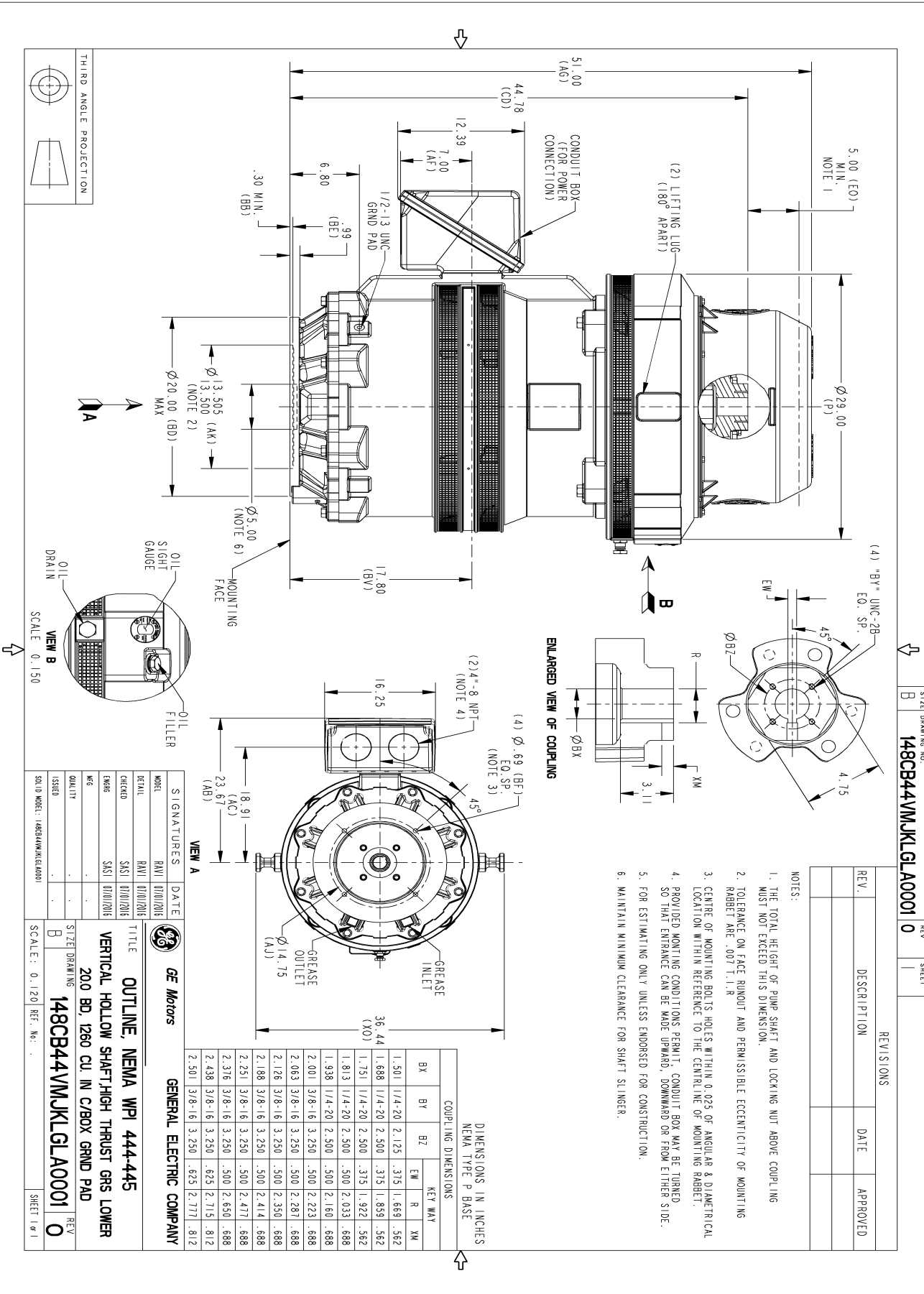
This motor is capable of two cold or one hot start with a maximum connected load inertia of 2497 Lb-Ft Sq (105.12 Kg-meter Sq)at 100% voltage, where the load torque varies with the square of the speed. Acceleration time with maximum inertia and the above load type is 15 seconds. Safe stall time at 100% voltage is 35 seconds cold, 18 seconds hot. Rotor inertia is 61.61 Lb-Ft Sq (2.59 Kg-meter Sq).

Open Circuit A-C:	0.626	Short Circuit D-C:	0.029
Short Circuit A-C:	0.036	X/R Ratio:	10.914
Stator Slots:	72	Rotor Slots:	58

Speed Torque Current Curve (First Connection, First Speed)



Marks:



NOTES:

1. THE TOTAL HEIGHT OF PUMP SHAFT AND LOCKING NUT ABOVE COUPLING MUST NOT EXCEED THIS DIMENSION.
2. TOLERANCE ON FACE RUNOUT AND PERMISSIBLE ECCENTRICITY OF MOUNTING RABBIT ARE .007 T.1.R
3. CENTRE OF MOUNTING BOLTS WITHIN 0.025 OF ANGULAR & DIA METRICAL LOCATION WITHIN REFERENCE TO THE CENTRELINE OF MOUNTING RABBIT.
4. PROVIDED MOUNTING CONDITIONS PERMIT, CONDUIT BOX MAY BE TURNED SO THAT ENTRANCE CAN BE MADE UPWARD, DOWNWARD OR FROM EITHER SIDE.
5. FOR ESTIMATING ONLY UNLESS ENDORSED FOR CONSTRUCTION.
6. MAINTAIN MINIMUM CLEARANCE FOR SHAFT SLINGER.

DIMENSIONS IN INCHES
NEMA TYPE P BASE

COUPLING DIMENSIONS	KEY WAY	
	R	XM
BX BY	BZ	EW
1.501	1/4-20 2.125	.315
1.688	1/4-20 2.500	.375
1.751	1/4-20 2.500	.375
1.813	1/4-20 2.500	.375
1.938	1/4-20 2.500	.500
2.001	3/8-16 3.250	.500
2.063	3/8-16 3.250	.500
2.126	3/8-16 3.250	.500
2.188	3/8-16 3.250	.500
2.251	3/8-16 3.250	.500
2.316	3/8-16 3.250	.500
2.438	3/8-16 3.250	.625
2.501	3/8-16 3.250	.625

GE Motors
GENERAL ELECTRIC COMPANY

SIGNATURES DATE

MODEL	REV	DATE
148CB44VMJKLGLA0001	0	04/26/2017

TITLE
OUTLINE, NEMA WPI 444-445

200 BD, 1260 CU. IN C/BOX GRND PAD

148CB44VMJKLGLA0001

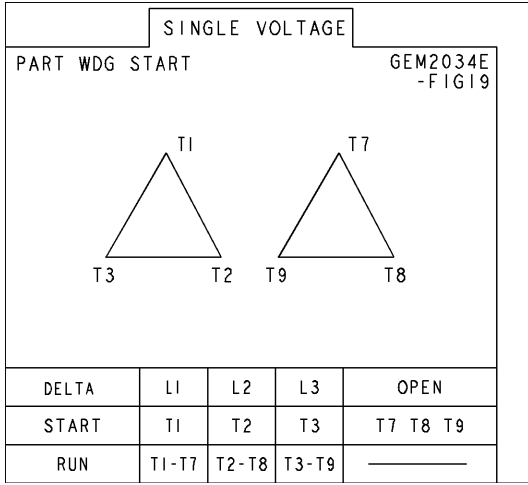
REVISIONS

REV.	DESCRIPTION	DATE	APPROVED
0			

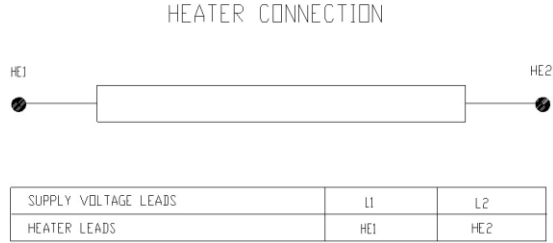
SCALE: 0.120 REF. No.:

Marks:

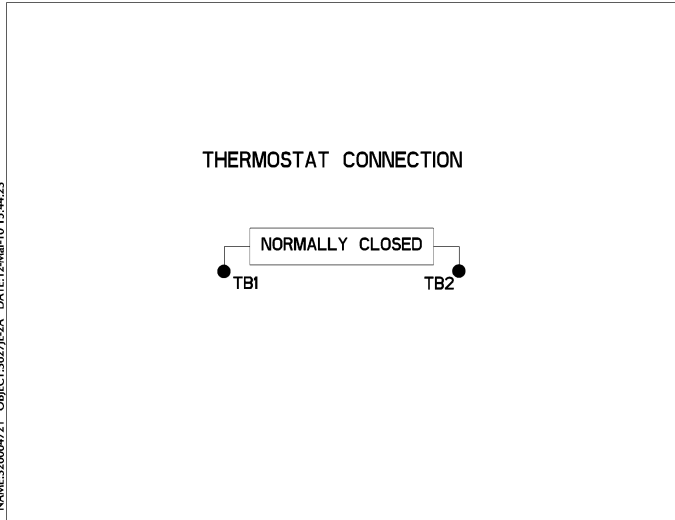
Connection Diagram
GEM2034E-FIG19



Heater Connection
3027JE-1C



Thermostat Connection
3027JE-2A



NAME:32000471 OBJECT:3027JE-2A DATE:12-Mar-10 15:44:23

End shield Assembly		
Part Description	DE Side Part#	ODE Side Part#
End Shield	115E7661AA1	115E7670LA1
Bearing	235A2522AJ01	235A2536AB01
Slinger/Inproseal		

Fan & Fan Cover Assembly	
Part Description	Part#
Fan	
Fan Cover	149C4050AA1

Conduit & Accessories Box Assembly	
Part Description	Part#
Conduit Box	179B9058G03

Mechanical Accessories	
Part Description	Part#
Brake	
Tachometer	