

Product Information Packet

November 8, 2016

Data shown is for the current revision model #. Ensure your nameplate model # matches.

Model Number:	5KS404SAA404D7
Catalog Number:	M9535
Instruction Manual:	GEI-56128
Connection Diagram:	GEM2034E-FIG1
Outline Drawing:	239C6400AA

Accessory Connection Diagrams

Bearing Thermocouple:	None	Heater:	None
RTD:	None	Thermistor:	None
Thermostat:	None	Winding Thermocouple:	None
Bearing RTD:	None		

Table of Contents

Specification	01
Performance Characteristics	02
Outline Drawing	03
Connection Drawing(s)	04
Spare parts	05



imagination at work

Marks:

MODEL NUMBER:	5KS404SAA404D7	Estimated Weight:	1390 Lbs
Outline Drawing:	239C6400AA	Time Rating:	CONT
Connection Diagram:	GEM2034E-FIG1	Enclosure:	TEFC
Instruction Book:	GEI-56128	Encl Construction:	X\$D
Design Code:	40BD4022B	Ambient Max(°C):	40
Type:	KS	Alt Ambient Max(°C):	60
Frame:	404T	Insulation Class:	H
Phases:	3	NEMA Design:	B
Poles:	8	Nominal Efficiency:	92.4 %
Output Power:	50HP 37KW	Guaranteed Efficiency:	91.7
RPM:	890	3/4 Load Efficiency:	93.2
Voltage:	575	KVA Code:	G
Hertz:	60	Max KVAR:	28.2
Amps - FL:	57.9	Power Factor:	70.0
Service Factor:	1.15	Bearing - DE:	6316ZC3S0
Alt Service Factor:	1.00	Bearing - ODE:	6316ZC3S0

Enclosure is Totally Enclosed Fan-Cooled

Stamped Nameplate Notes:

STAMP NP249A5564P051 AS BELOW:
 MODEL:5KS404SAA404D7 S/N: XXX
 CSA CERTIFIED CSA09.2216219 FOR EX NA IIC 200 C GC
 CL 1 ZONE2 AEX NA IIC 200C;CL 1 DIV2 GRP ABCD 200C
 IN -40C <= AMB <= 40C, 1.0 SF ON SINE-WAVE PWR
 SURF TEMP 230C AT 1.15SF ON SINE-WAVE PWR
 OR 200 C VT OR 230 C CT OR 200 C CHP PWM CONTROL
 ALTERNATE RATING FOR PWM CONTROL 1.0SF 40C AMB
 VT 0-60 HZ, CT 15-60 HZ , CHP 60-90 HZ.

Additional Information:

8P - T EXTN
 C/BOX 700 CU IN - 3.00" NPT
 OIL RESISTANT SLEEVING ON LEADS
 F1 MOUNTING

Performance Characteristics

1st Winding 1st Connection

Design: 40BD4022B**Marks:**

LOAD %	125.0	115.0	100.0	75.0	50.0	25.0	0.0
% EFF	92.18	92.54	93.16	93.25	92.63	88.91	0.00
% PF	73.56	72.54	70.2	63.44	51.23	31.05	2.98
AMPS	69.01	64.14	57.21	47.46	39.45	33.9	31.48

TORQ(FL)#FT 295.29
AMPS(LR) 257.42

TORQ(LR)%FL 141.96
PF AT START 0.36

TORQ(BD)%FL 212.61

This motor is capable of two cold or one hot start with a maximum connected load inertia of 4923 Lb-Ft Sq (207.26 Kg-meter Sq) at 100% voltage, where the load torque varies with the square of the speed. Acceleration time with maximum inertia and the above load type is 45 seconds. Safe stall time at 100% voltage is 130 seconds cold, 69 seconds hot. Rotor inertia is 26.19 Lb-Ft Sq (1.1 Kg-meter Sq).

Open Circuit A-C: 0.352

Short Circuit D-C: 0.02

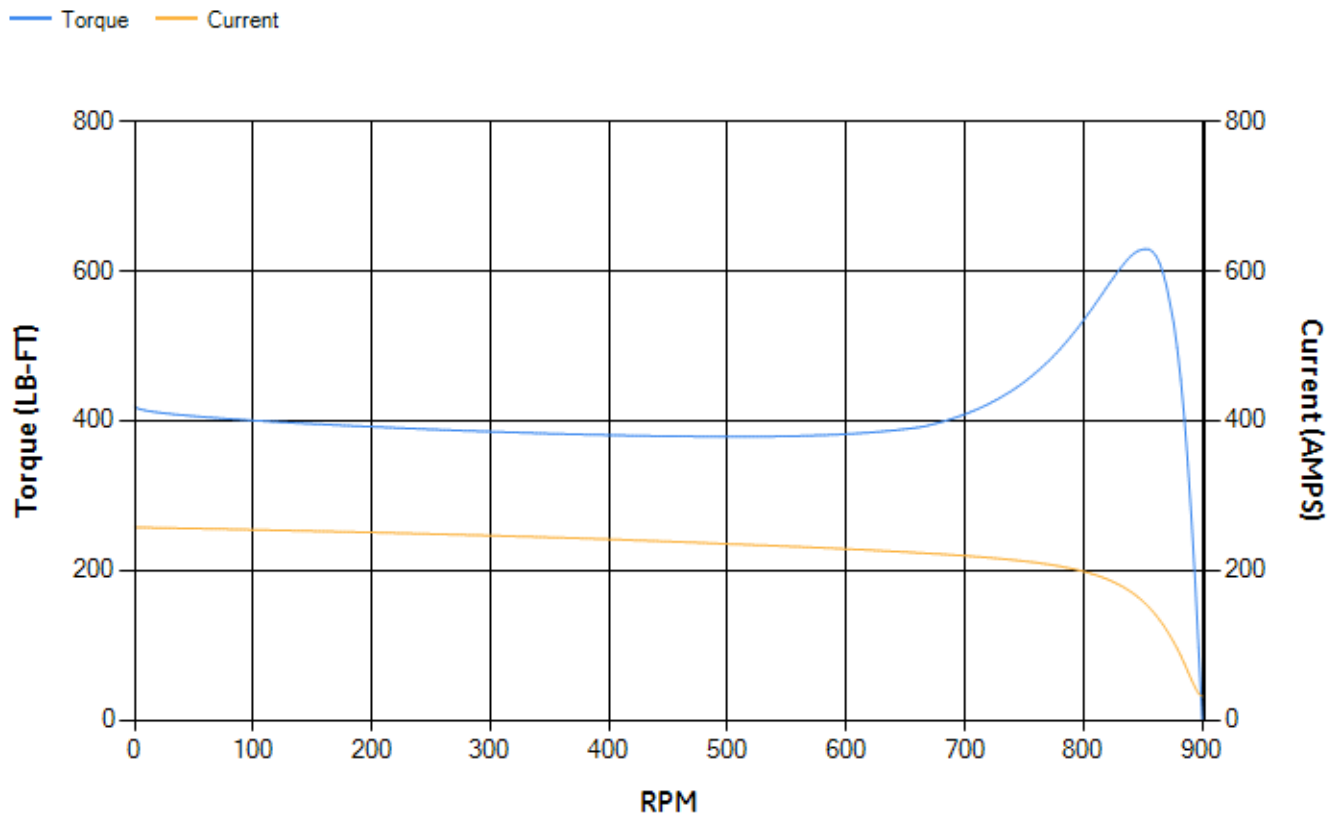
Short Circuit A-C: 0.039

X/R Ratio: 7.534

Stator Slots: 72

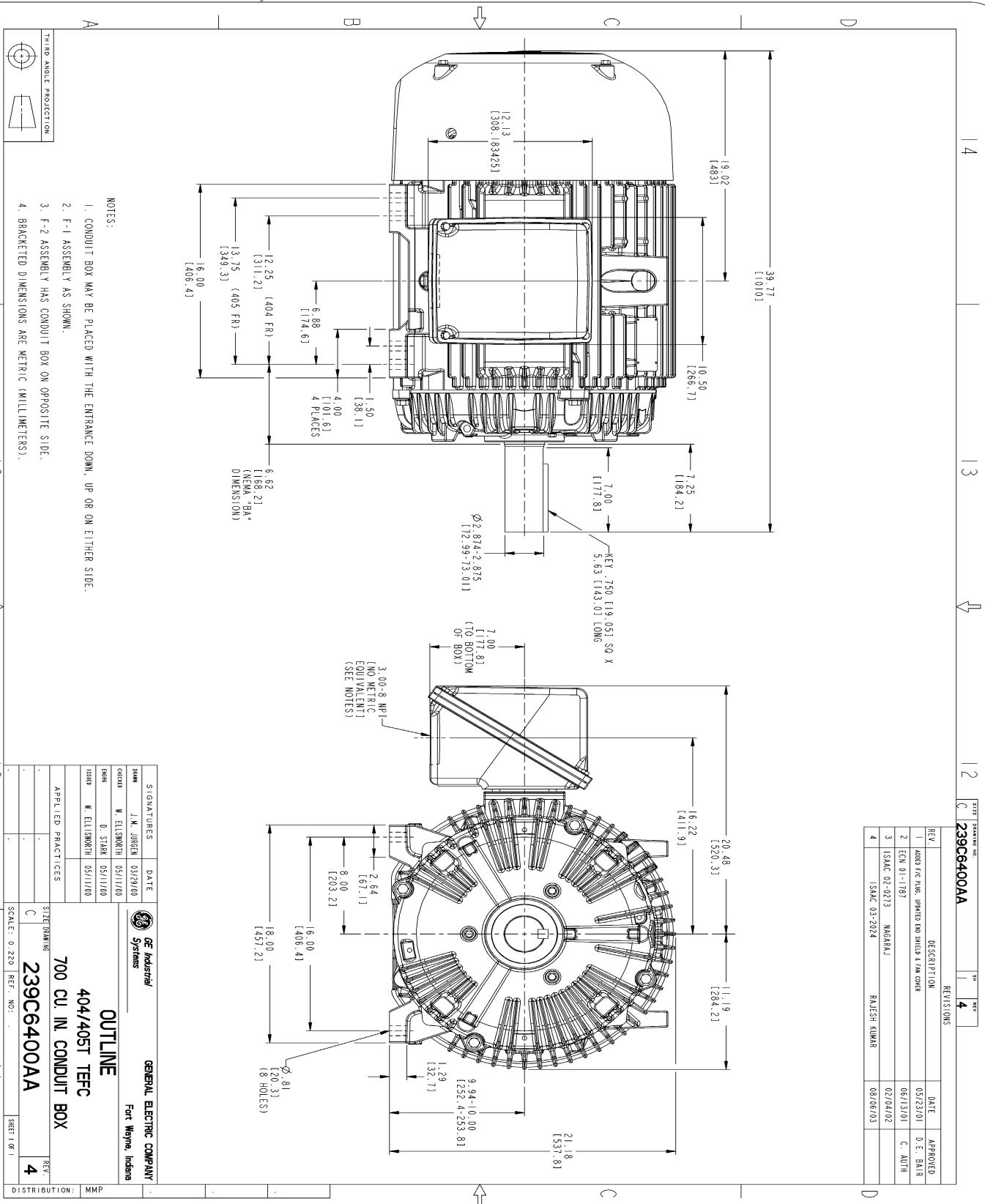
Rotor Slots: 58

Speed Torque Current Curve (First Connection, First Speed)




NAME: 103016807 OBJECT: 239C6400AA DATE: 08-Aug-03 09:32:41

Marks:



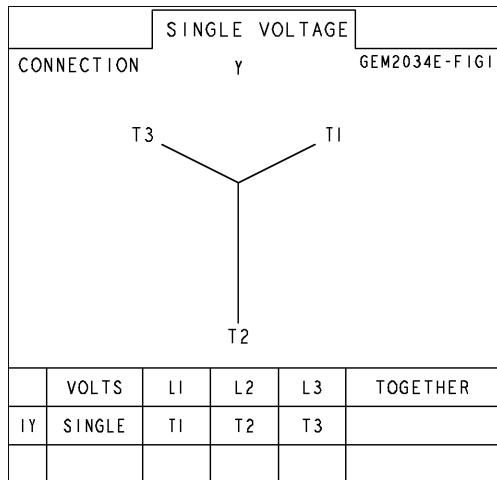
STANDARD NO.		REV.	
Z39C66-00A		5	4
REVISIONS			
REV.	DESCRIPTION	DATE	APPROVED
1	ADDED PFC HOLE, SPACED AND SHIELDED PAIN COVER	05/23/01	D. E. BAIR
2	ECN 01-1787	06/13/01	C. MUTH
3	ISAC 02-0213 NAGARA	07/04/02	
4	ISAC 03-2024	08/06/03	RAJESH KUMAR

		GENERAL ELECTRIC COMPANY Fort Wayne, Indiana	
<h1>OUTLINE</h1>			
<h2>404/40ST TFFC</h2>			
<h2>700 CU. IN. CONDUIT BOX</h2>			
APPLIED PRACTICES		S. ZEL DOWNEY	
DATE J. M. JUNG 03/29/00	CHECKED W. ELL SWORTH 05/11/00	DESIGNED D. STARK 05/11/00	DRAWN W. ELL SWORTH 05/11/00
REV.			

DISTRIBUTION:	MMP
---------------	-----

Marks:

Connection Diagram **GEM2034E-FIG1**



End shield Assembly		
Part Description	DE Side Part#	ODE Side Part#
End Shield	115E4304AA1	115E4304LL1
Bearing	235A2618AA04	235A2618AA04
Slinger/Inproseal	149C4399G06	149C4399G06

Fan & Fan Cover Assembly	
Part Description	Part#
Fan	159C7100G02
Fan Cover	128D6832AA1

Conduit & Accessories Box Assembly	
Part Description	Part#
Conduit Box	118D4408AD2

Mechanical Accessories	
Part Description	Part#
Brake	
Tachometer	

