

# Product Information Packet

November 8, 2016

Data shown is for the current revision model #. Ensure your nameplate model # matches.

<b>Model Number:</b>	<b>5KS326STE305A</b>
<b>Catalog Number:</b>	<b>M7550</b>
<b>Instruction Manual:</b>	GEI-M1031
<b>Connection Diagram:</b>	GEM2034E-FIG210
<b>Outline Drawing:</b>	358B6274AC

Accessory Connection Diagrams			
<b>Bearing Thermocouple:</b>	None	<b>Heater:</b>	None
<b>RTD:</b>	None	<b>Thermistor:</b>	None
<b>Thermostat:</b>	None	<b>Winding Thermocouple:</b>	None
<b>Bearing RTD:</b>	None		

Table of Contents	
Specification	01
Performance Characteristics	02
Outline Drawing	03
Connection Drawing(s)	04

**Marks:**

<b>MODEL NUMBER:</b>	<b>5KS326STE305A</b>	<b>Estimated Weight:</b>	586 Lbs
<b>Outline Drawing:</b>	358B6274AC	<b>Time Rating:</b>	CONT
<b>Connection Diagram:</b>	GEM2034E-FIG210	<b>Enclosure:</b>	TEFC
<b>Instruction Book:</b>	GEI-M1031	<b>Encl Construction:</b>	SD
<b>Design Code:</b>	32AD3007A	<b>Ambient Max(°C):</b>	40
<b>Type:</b>	KS	<b>Alt Ambient Max(°C):</b>	--
<b>Frame:</b>	326T	<b>Insulation Class:</b>	F
<b>Phases:</b>	3	<b>NEMA Design:</b>	A
<b>Poles:</b>	6	<b>Nominal Efficiency:</b>	93 %
<b>Output Power:</b>	30HP 22.2KW	<b>Guaranteed Efficiency:</b>	91.7
<b>RPM:</b>	1180	<b>3/4 Load Efficiency:</b>	93.9
<b>Voltage:</b>	230/460	<b>KVA Code:</b>	G
<b>Hertz:</b>	60	<b>Max KVAR:</b>	9.8
<b>Amps - FL:</b>	72.4/36.2	<b>Power Factor:</b>	80
<b>Service Factor:</b>	1.15	<b>Bearing - DE:</b>	6312
<b>Alt Service Factor:</b>	--	<b>Bearing - ODE:</b>	6212

**Enclosure is Totally Enclosed Fan-Cooled**

**Stamped Nameplate Notes:**

STAMP NP249A7311 ; KW 22.4; DUTY S1; IC411  
 IP54;IBM3; MASS 265KG; MIN AMB -15C; MAX ALT 1000M  
 USABLE AT 200V @ 25 HP, 80.1 AMPS @ 1.0 SF  
 50HZ DATA @ 1.15 SF: 25.0/18.7 HP,  
 200/400V, 72.0/36.0 AMPS: 50HZ DATA @ 1.00 SF  
 30.0/22.4 HP, 200/400V, 81.6/40.8AMPS  
 GREASE TYPE: EXXON POLYREX EM

**Additional Information:**

6 POLE, TEFC, CE MARK,  
 DUAL DIMENSION OUTLINE, IP54  
 NO. OF MOTOR LEADS: 12  
 CONDUIT BOX VOLUME (CU IN): 272.9  
 CONDUIT BOX MATERIAL: CAST IRON  
 SUITABLE FOR USE IN CLASS I DIVISION 2 LOCATIONS  
 CLASS I DIVISION 2 GROUPS A,B,C,D T3C  
 CLASS I ZONE 2 IIC T3C

**Performance Characteristics**

1st Winding 1st Connection

**Design: 32AD3007A**

**Marks:**

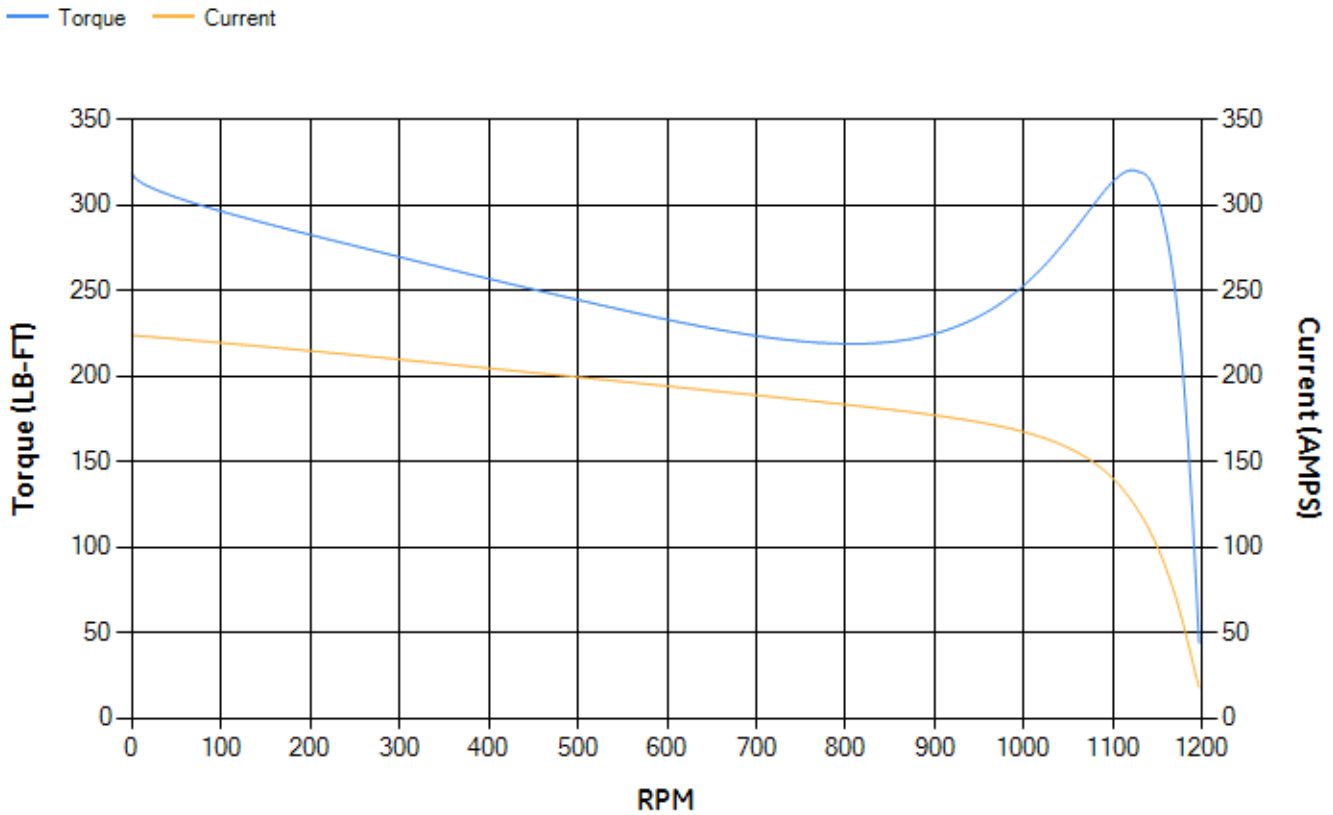
LOAD %	125.0	115.0	100.0	75.0	50.0	25.0	0.0
% EFF	92.31	92.74	93.49	93.88	93.74	91.19	0.00
% PF	83.1	82.78	81.74	77.78	68.43	46.73	4.01
AMPS	45.75	42.06	36.74	28.84	21.88	16.47	13.83

<b>TORQ(FL)#FT</b>	133.21	<b>TORQ(LR)%FL</b>	239.49	<b>TORQ(BD)%FL</b>	239.96
<b>AMPS(LR)</b>	223.77	<b>PF AT START</b>	0.42		

This motor is capable of two cold or one hot start with a maximum connected load inertia of 1649 Lb-Ft Sq (69.42 Kg-meter Sq)at 100% voltage, where the load torque varies with the square of the speed. Acceleration time with maximum inertia and the above load type is 30 seconds. Safe stall time at 100% voltage is 83 seconds cold, 50 seconds hot. Rotor inertia is 11.88 Lb-Ft Sq (0.5 Kg-meter Sq).

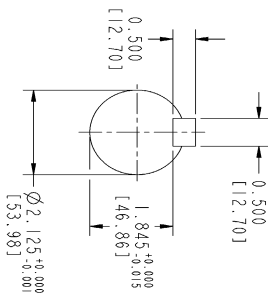
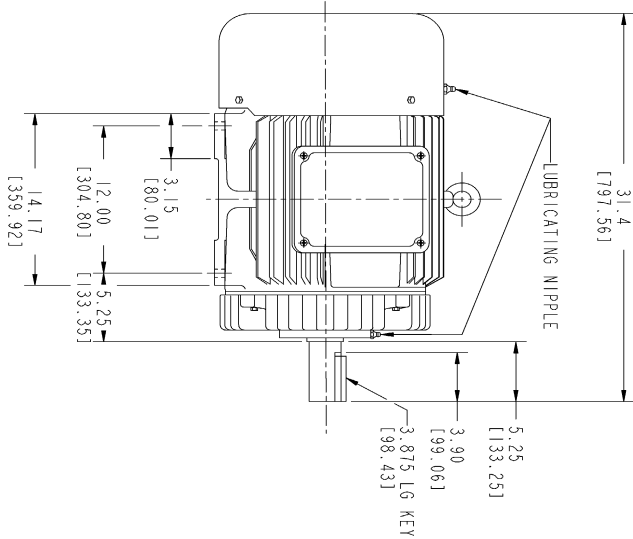
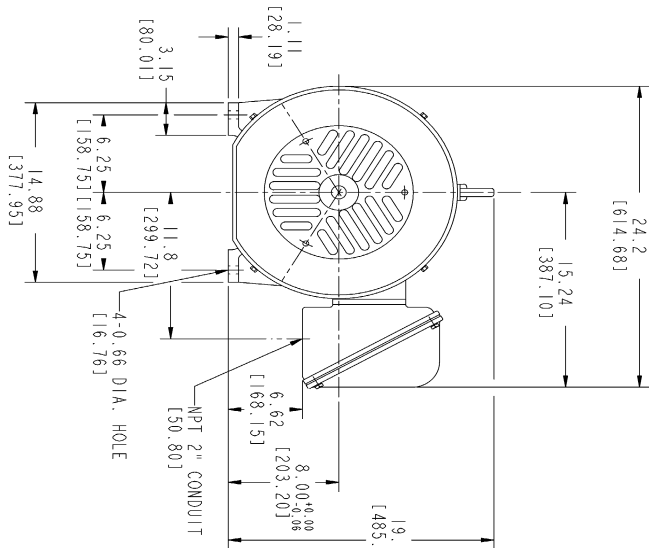
<b>Open Circuit A-C:</b>	0.474	<b>Short Circuit D-C:</b>	0.015
<b>Short Circuit A-C:</b>	0.025	<b>X/R Ratio:</b>	5.55
<b>Stator Slots:</b>	72	<b>Rotor Slots:</b>	58

**Speed Torque Current Curve (First Connection, First Speed)**

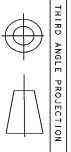


NAME:501291659 OBJECT:358B6274AC DATE:05-Dec-07 10:40:01

Marks:



- NOTES :
1. DIMENSIONS ARE IN INCHES.
  2. F-I ASM AS SHOWN.
  3. F-2 ASM - HAS CONDUIT BOX ON OPPOSITE SIDE.
  4. BRACKETED DIMENSIONS ARE METRIC (MILLIMETERS)
  5. ICA11, IP54, IMB34 APPLY



THIRD ANGLE PROJECTION

Part must conform to SI 900000 Sect 4, Toxicity Procedure

FOR ADDITIONAL INFO REFER TO:	SIGNATURES	DATE
APPLICABLE STANDARDS		
DESIGN SPECIFICATIONS		
DIMENSIONS IN INCHES		
DIMENSIONS IN MILLIMETERS		
TOLERANCES		
FRACTIONS		
ANGLES		
FINISH		

REV	DESCRIPTION	DATE	APPROVED

STANDARD NO.	358B6274AC	REV	0	SHEET	1
REV					
DESCRIPTION		DATE		APPROVED	

GENERAL ELECTRIC COMPANY	GE Consumer & Industrial
OUTLINE	FD - 326T TEFC CE MARK
2729 CU IN CONDUIT BOX	
358B6274AC	
REV	0

14

13

12

11

14

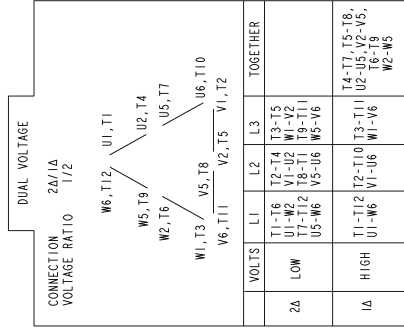
13

12

11

Marks:

**Connection Diagram**  
**GEM2034E-FIG210**



NAME:501452353 OBJECT:GEM2034E-FIG210 DATE:25-Feb-08 14:03:35

