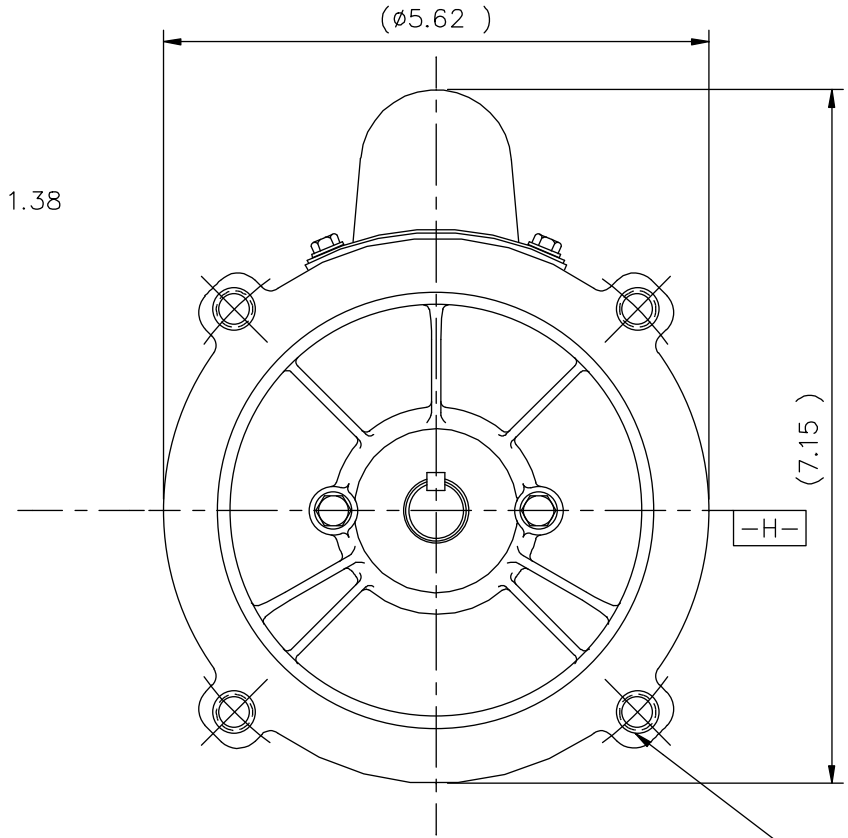
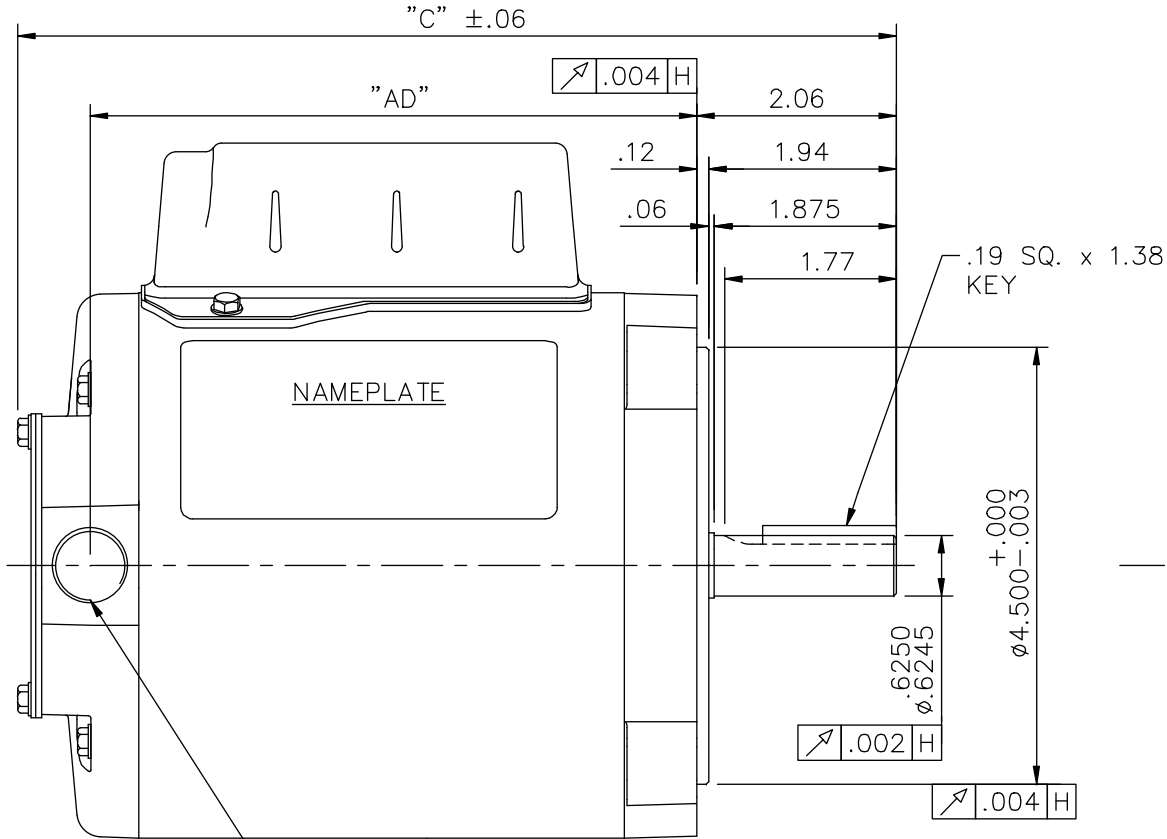


S404030



DASH NO.	"C"	"AD"
550	9.55	6.75
575	9.80	7.00
600	10.05	7.25
625	10.30	7.50
650	10.55	7.75

1/2-14
PLUGGED NPT
CONDUIT HOLE

3/8-16 UNC 2B TAP x .56 DEEP
(4) REQ'D. ON A ø5.875 B.C.

GASKETS THROUGHOUT

				TOLERANCES UNLESS SPECIFIED		LEESON	ELECTRIC MOTORS GEARMOTORS AND DRIVES	DRAWN KR 07/11/2013		
				DEC.	INCHES			CHK	SM 07/11/2013	
				.X	±.1	TITLE OUTLINE - S56C FRAME "C" FACE MOUNT - ENCLOSED	APPD	SCALE 1:1		
				.XX	±.03			REF	SS403991	
				.XXX	±.005			FMF	A099251.00	
				.XXXX	±.0005			PREV		
NO.	REVISION	BY & DATE	CHK	ANG	±1/2'	FINISH	SIZE	DRAWING NO.	REV.	
			RFP			CAD FILE	A	S404030	0	
			DIST							

THIS DRAWING IN DESIGN AND DETAIL IS OUR PROPERTY AND MUST NOT BE USED EXCEPT IN CONNECTION WITH OUR WORK ALL RIGHTS OF DESIGN AND INVENTION ARE RESERVED THIS IS AN ELECTRONICALLY GENERATED DOCUMENT - DO NOT SCALE THIS PRINT