

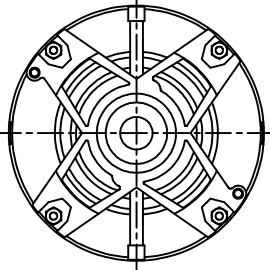
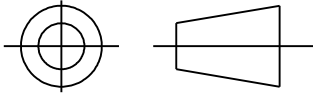
RBC PROPRIETARY AND CONFIDENTIAL INFORMATION

This document is the property of REGAL BELOIT CORPORATION ("RBC") including its subsidiaries and divisions and contains proprietary information of RBC. This document is loaned on the express condition that neither it nor the information contained herein shall be disclosed to others without the express written consent of RBC, and that the information shall be used by the recipient only as approved expressly by RBC. This document shall be returned to RBC upon its request. This document may be subject to certain restrictions under U.S. export control laws and regulations.

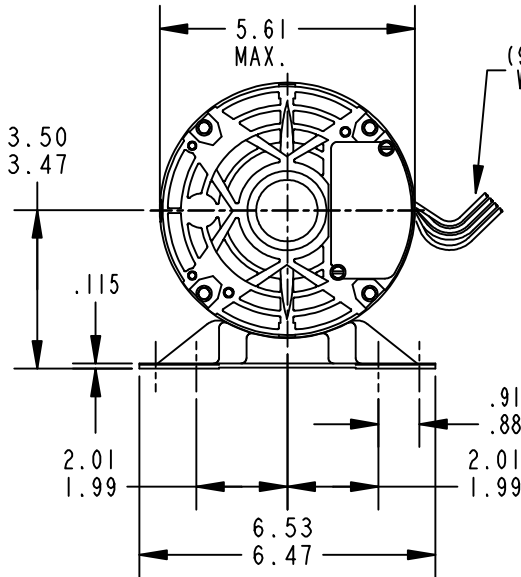
REVISIONS

| REV. | DESCRIPTION | DATE | APPROVED |
|------|--------------------------|----------|-----------|
| 1 | UPDATED AS PER ISO5-1826 | 09/06/05 | PRAVEEN.K |

THIRD ANGLE PROJECTION

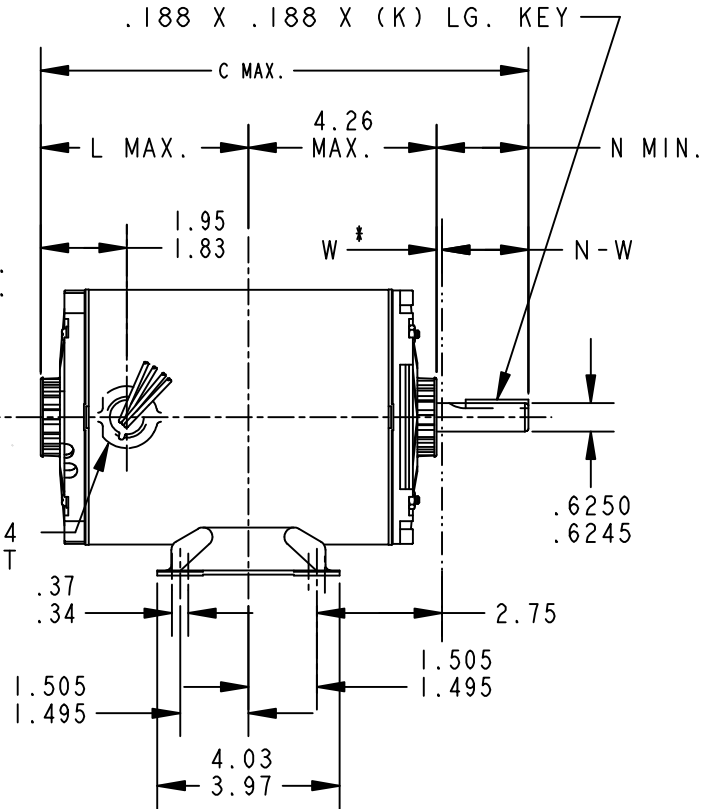


VIEW SHOWING P.E. VENTILATION OPENINGS



(9) LEADS 6" LG. WITH .62 B.W.S.


.500-14 CONDUIT THREAD



W* IS A CLEARNCE DUE TO VARIATION IN PARTS AND ASSEMBLY.

| | | | | | | | | |
|---|------|---------|---------|-------|------|------|------|-----------|
| | | | | | | | | |
| I | K | 37 | 56Z | 10.72 | 1.38 | 4.46 | 1.88 | 2.01/1.79 |
| P | TYPE | GE SIZE | NEMA FR | C | K | L | N | N - W |

| FOR ADDITIONAL INFO REFER TO: | SIGNATURES | DATE |
|--|------------------------|-----------------|
| APPLIED PRACTICES | MODEL | . |
| DIMENSIONS ARE IN INCHES | DETAIL | DEBRAJ 01/10/05 |
| TOLERANCE ON: 1 PL DECIMALS ± 0.1 2 PL DECIMALS ± 0.02 3 PL DECIMALS ± 0.005 ANGLES ± 1.0 FRACTIONS ± | CHECKED | . |
| | ENGRG | . |
| | MFG | . |
| | QUALITY | . |
| FINISH | ISSUED | DEBRAJ 01/10/05 |
| MATERIAL | SOLID MODEL: 52A111275 | |



REGAL-BELOIT CORPORATION

TITLE **OUTLINE**

FORM N - GENERAL PURPOSE MOTOR

DRIP PROOF - WELDED BASE - BALL BEARING

| | | |
|------|-----------|-----|
| SIZE | DRAWING | REV |
| A | 52A111275 | 1 |

SCALE: 0.003 REF. No: . SHEET 1 of 1