

Product Information Packet

November 9, 2016

Data shown is for the current revision model #. Ensure your nameplate model # matches.

Model Number:	5KS324STE204A
Catalog Number:	M7534
Instruction Manual:	GEI-M1031
Connection Diagram:	GEM2034E-FIG7
Outline Drawing:	358B6274AA

Accessory Connection Diagrams			
Bearing Thermocouple:	None	Heater:	None
RTD:	None	Thermistor:	None
Thermostat:	None	Winding Thermocouple:	None
Bearing RTD:	None		

Table of Contents	
Specification	01
Performance Characteristics	02
Outline Drawing	03
Connection Drawing(s)	04



Marks:

MODEL NUMBER:	5KS324STE204A	Estimated Weight:	632 Lbs
Outline Drawing:	358B6274AA	Time Rating:	CONT
Connection Diagram:	GEM2034E-FIG7	Enclosure:	TEFC
Instruction Book:	GEI-M1031	Encl Construction:	SD
Design Code:	32AD1009B	Ambient Max(°C):	40
Type:	KS	Alt Ambient Max(°C):	--
Frame:	324T	Insulation Class:	F
Phases:	3	NEMA Design:	A
Poles:	4	Nominal Efficiency:	94.1 %
Output Power:	40HP 29.6KW	Guaranteed Efficiency:	93.0
RPM:	1780	3/4 Load Efficiency:	94.2
Voltage:	575	KVA Code:	H
Hertz:	60	Max KVAR:	10.4
Amps - FL:	37.2	Power Factor:	85.5
Service Factor:	1.15	Bearing - DE:	6312
Alt Service Factor:	--	Bearing - ODE:	6212

Enclosure is Totally Enclosed Fan-Cooled

Stamped Nameplate Notes:**Additional Information:**

4 POLE, TEFC, LRA: 275 AMPS
 SOUND POWER : 89 DBA
 GREASE: EXXON POLYREX EM
 NO. OF MOTOR LEADS: 3
 CONDUIT BOX VOLUME (CU IN): 272.9
 CONDUIT BOX MATERIAL: CAST IRON
 SUITABLE FOR USE IN CLASS I DIVISION 2 LOCATIONS
 CLASS I DIVISION 2 GROUPS A,B,C,D T3C
 CLASS I ZONE 2 IIC T3C

Performance Characteristics

1st Winding 1st Connection

Design: 32AD1009B

Marks:

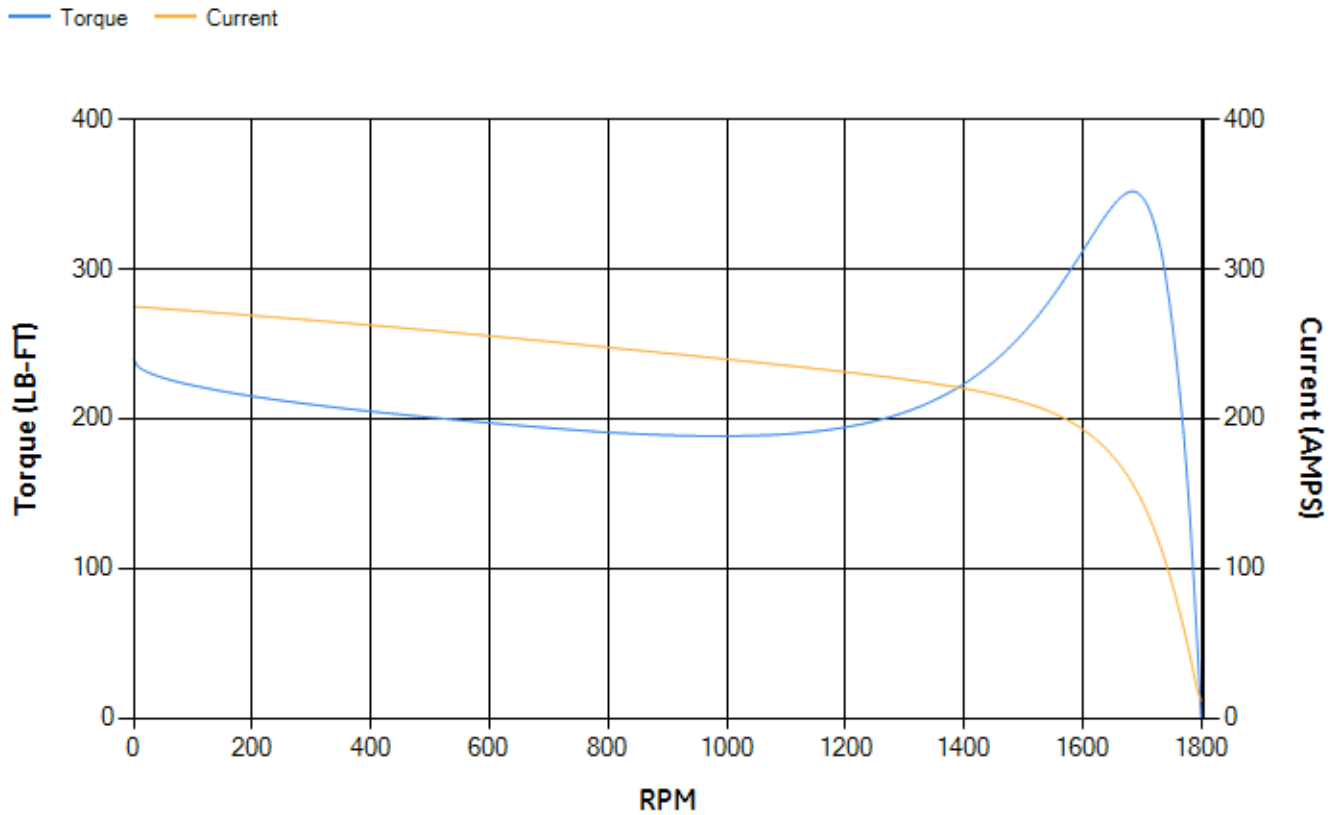
LOAD %	125.0	115.0	100.0	75.0	50.0	25.0	0.0
% EFF	93.55	93.8	94.28	94.22	93.55	90.08	0.00
% PF	86.15	86.12	85.63	83.08	75.98	56.15	6.35
AMPS	46.45	42.64	37.1	28.7	21.07	14.8	11.51

TORQ(FL)#FT	118.08	TORQ(LR)%FL	203.13	TORQ(BD)%FL	297.18
AMPS(LR)	274.93	PF AT START	0.32		

This motor is capable of two cold or one hot start with a maximum connected load inertia of 1233 Lb-Ft Sq (51.91 Kg-meter Sq)at 100% voltage, where the load torque varies with the square of the speed. Acceleration time with maximum inertia and the above load type is 40 seconds. Safe stall time at 100% voltage is 71 seconds cold, 48 seconds hot. Rotor inertia is 8.37 Lb-Ft Sq (0.35 Kg-meter Sq).

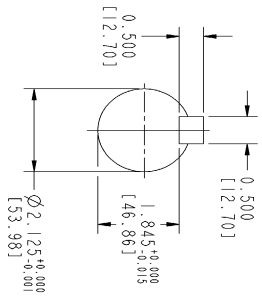
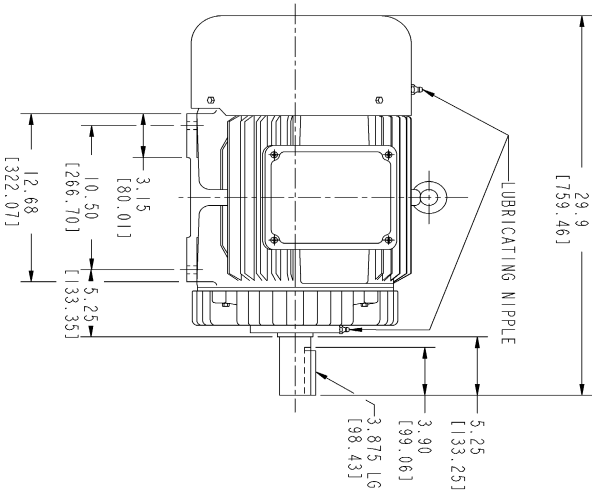
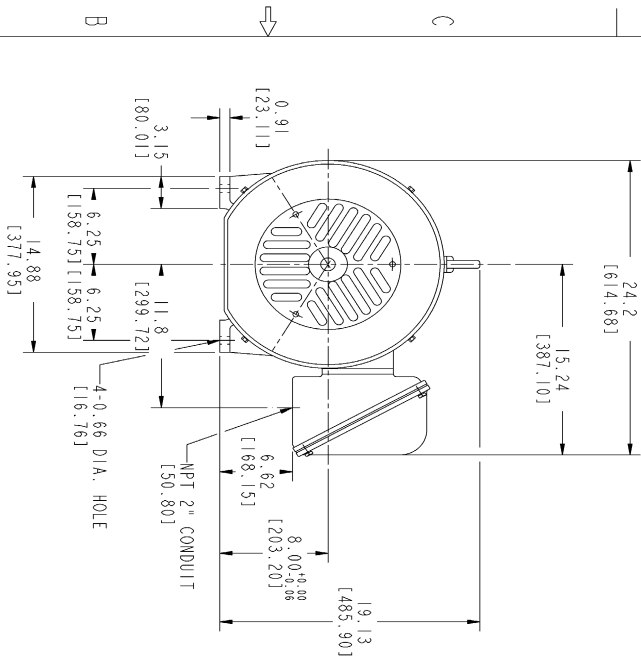
Open Circuit A-C:	0.71	Short Circuit D-C:	0.022
Short Circuit A-C:	0.028	X/R Ratio:	8.479
Stator Slots:	48	Rotor Slots:	40

Speed Torque Current Curve (First Connection, First Speed)



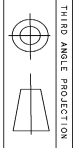
NAME:501291659 OBJECT:358B6274AA DATE:05-Dec-07 10:35:05

Marks:



- NOTES :
1. DIMENSIONS ARE IN INCHES.
 2. F-1 ASM AS SHOWN.
 3. F-2 ASM - HAS CONDUIT BOX ON OPPOSITE SIDE.
 4. BRACKETED DIMENSIONS ARE METRIC (MILLIMETERS)
 5. [C41], [P54], [MB34] APPLY

REVISIONS		
REV.	DESCRIPTION	DATE



THIRD ANGLE PROJECTION

Part must conform to SI 900000 Sect. 4, Toxicity Procedure

FOR ADDITIONAL INFO REFER TO:		SIGNATURES		DATE	
APPROVED	DATE	DATE	DATE	DATE	DATE
DESIGNED	DATE	DATE	DATE	DATE	DATE
DRAWN	DATE	DATE	DATE	DATE	DATE
CHECKED	DATE	DATE	DATE	DATE	DATE
ENG'G	DATE	DATE	DATE	DATE	DATE
QUALITY	DATE	DATE	DATE	DATE	DATE
ISSUED	DATE	DATE	DATE	DATE	DATE

GE Consumer & Industrial
GENERAL ELECTRIC COMPANY
OUTLINE
FTD - 324T TFC CE MARK
2729 CU IN CONDUIT BOX
358B6274AA
 REV: 0
 SHEET 1 OF 1

14

13

12

11

Marks:

Connection Diagram
GEM2034E-FIG7

