

Product Information Packet

November 9, 2016

Data shown is for the current revision model #. Ensure your nameplate model # matches.

Model Number:	5KS365SAA218D11
Catalog Number:	M9923
Instruction Manual:	GEI-56128
Connection Diagram:	GEM2034E-FIG7
Outline Drawing:	239C6200AB

Accessory Connection Diagrams			
Bearing Thermocouple:	None	Heater:	None
RTD:	None	Thermistor:	None
Thermostat:	None	Winding Thermocouple:	None
Bearing RTD:	None		

Table of Contents

Specification	01
Performance Characteristics	02
Outline Drawing	03
Connection Drawing(s)	04
Spare parts	05



Marks:

MODEL NUMBER:	5KS365SAA218D11	Estimated Weight:	1020 Lbs
Outline Drawing:	239C6200AB	Time Rating:	CONT
Connection Diagram:	GEM2034E-FIG7	Enclosure:	TEFC
Instruction Book:	GEI-56128	Encl Construction:	X\$D
Design Code:	36BD1227A	Ambient Max(°C):	40
Type:	KS	Alt Ambient Max(°C):	60
Frame:	365TS	Insulation Class:	H
Phases:	3	NEMA Design:	B
Poles:	4	Nominal Efficiency:	95.4 %
Output Power:	75HP 55.5KW	Guaranteed Efficiency:	95.0
RPM:	1785	3/4 Load Efficiency:	95.5
Voltage:	460	KVA Code:	G
Hertz:	60	Max KVAR:	26.6
Amps - FL:	89.2	Power Factor:	82.5
Service Factor:	1.15	Bearing - DE:	6314ZC3
Alt Service Factor:	1.00	Bearing - ODE:	6314ZC3

Enclosure is Totally Enclosed Fan-Cooled

Stamped Nameplate Notes:

STAMP NP249A5564P051 AS BELOW:
 MODEL:5KS365SAA218D11 S/N: XXX
 CSA CERTIFIED CSA09.2216219 FOR EX NA IIC 200C GC
 CL 1 ZONE2 AEX NA IIC 200C;CL 1 DIV2 GRP ABCD 200C
 IN -40C <= AMB <= 40C, 1.0 SF ON SINE-WAVE PWR
 SURF TEMP 260C AT 1.15SF ON SINE-WAVE PWR
 OR 200C VT OR 230C CT OR 200C CHP PWM CONTROL
 ALTERNATE RATING FOR PWM CONTROL 1.0SF 40C AMB
 VT 0-60 HZ, CT 10-60 HZ, CHP 60-90 HZ.

Additional Information:

4P - TS EXTN
 C/BOX 346 CU IN - 3.00" NPT
 OIL RESISTANT SLEEVING ON LEADS
 F1 MOUNTING

Performance Characteristics

1st Winding 1st Connection

Design: 36BD1227A

Marks:

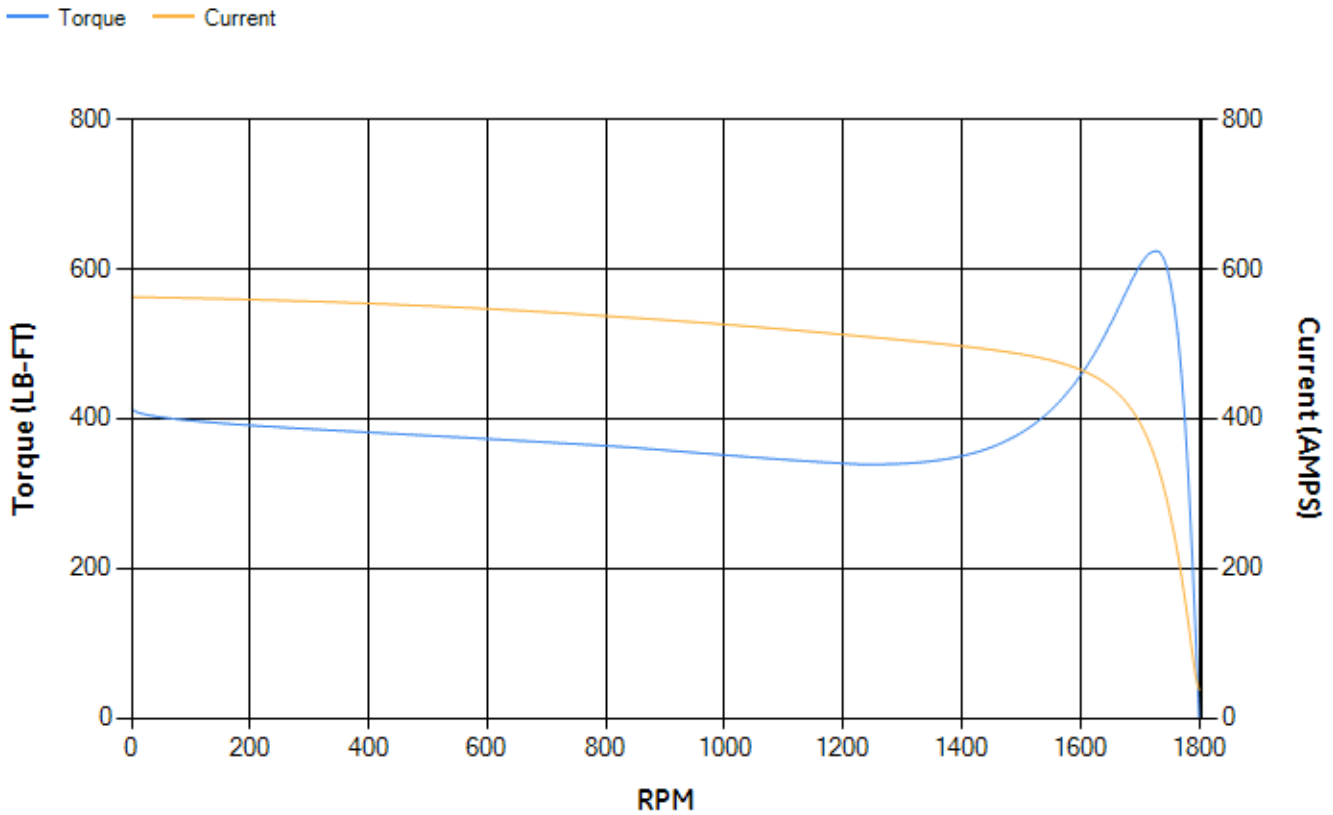
LOAD %	125.0	115.0	100.0	75.0	50.0	25.0	0.0
% EFF	94.85	95.06	95.52	95.53	95.19	92.83	0.00
% PF	84.62	83.96	82.42	77.56	67.04	44.23	2.93
AMPS	109.33	101.14	88.97	71.05	55	42.75	37.05

TORQ(FL)#FT	220.86	TORQ(LR)%FL	187.4	TORQ(BD)%FL	281.78
AMPS(LR)	562.55	PF AT START	0.32		

This motor is capable of two cold or one hot start with a maximum connected load inertia of 1432 Lb-Ft Sq (60.29 Kg-meter Sq)at 100% voltage, where the load torque varies with the square of the speed. Acceleration time with maximum inertia and the above load type is 27 seconds. Safe stall time at 100% voltage is 65 seconds cold, 32 seconds hot. Rotor inertia is 15.28 Lb-Ft Sq (0.64 Kg-meter Sq).

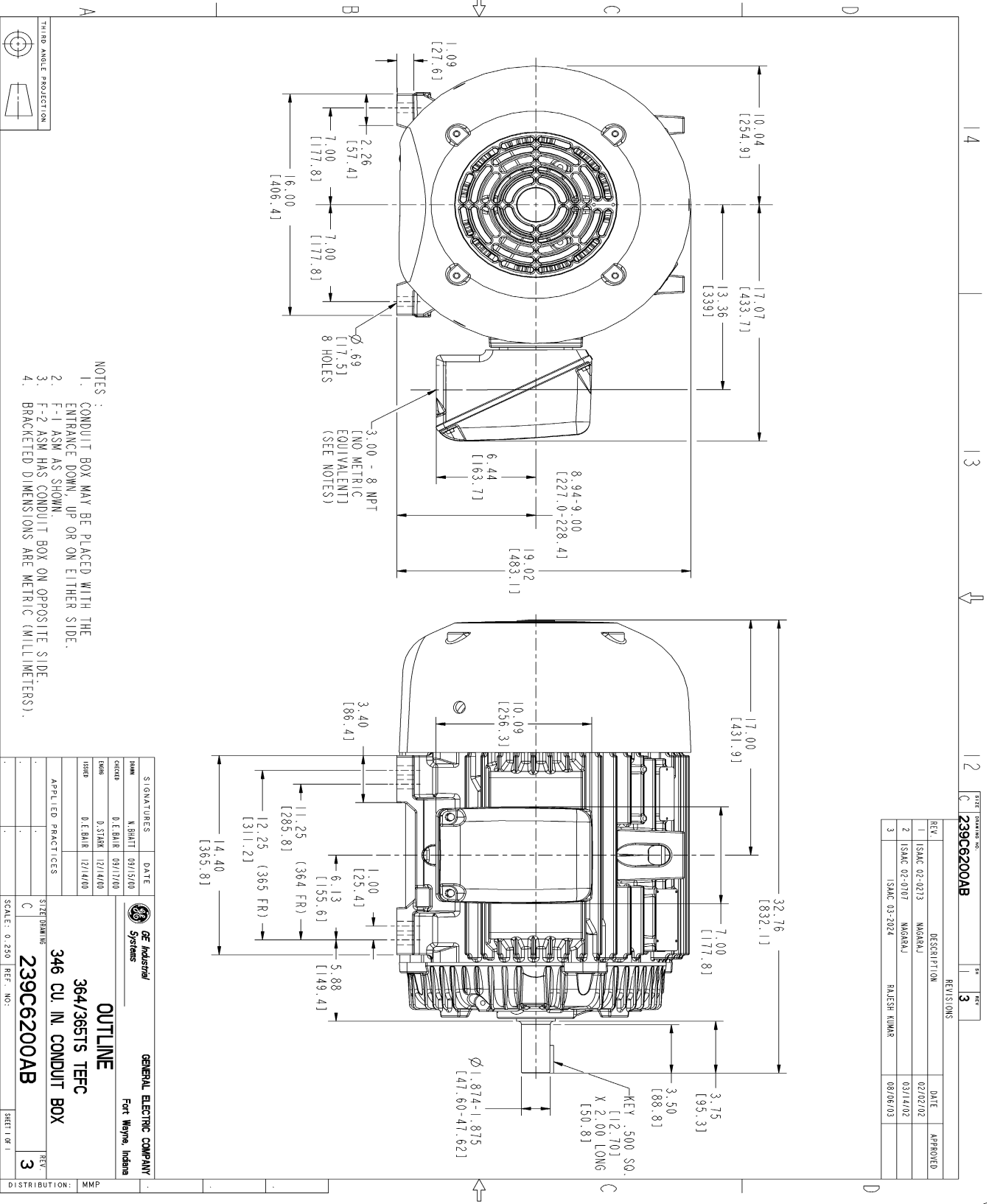
Open Circuit A-C:	0.626	Short Circuit D-C:	0.025
Short Circuit A-C:	0.034	X/R Ratio:	9.412
Stator Slots:	60	Rotor Slots:	50

Speed Torque Current Curve (First Connection, First Speed)



NAME: 103016807 OBJECT: 239C6200AB DATE: 07-Aug-03 23:40:52

Marks:



REV.	DESCRIPTION	DATE	APPROVED
1	ISAC 02-0213 MAGRAJ	02/02/02	
2	ISAC 02-0707 MAGRAJ	03/14/02	
3	ISAC 03-2024 RAJESH KUMAR	08/06/03	

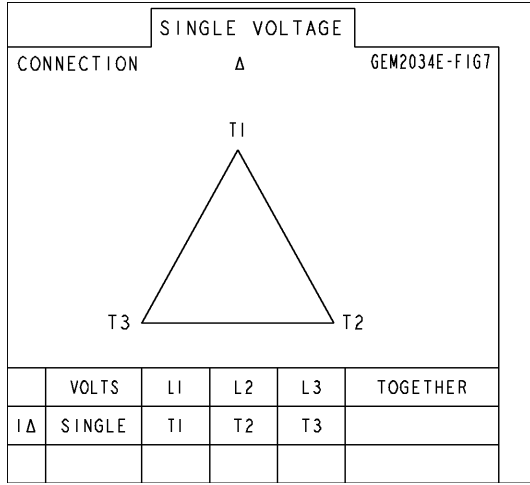
REV	REV
3	3

- NOTES :
1. CONDUIT BOX MAY BE PLACED WITH THE ENTRANCE DOWN, UP OR ON EITHER SIDE.
 2. F-1 ASM AS SHOWN.
 3. F-2 ASM HAS CONDUIT BOX ON OPPOSITE SIDE.
 4. BRACKETED DIMENSIONS ARE METRIC (MILLIMETERS).

SIGNATURES	DATE	GENERAL ELECTRIC COMPANY
DESIGNED BY: K. BHATT	09/15/00	 OUTLINE 364/365TS TFCF 346 CU. IN. CONDUIT BOX 239C6200AB
CHECKED BY: D. E. BAIR	09/17/00	
DRAWN BY: D. STARK	12/14/00	
APPLIED PRACTICES		
SCALE: 0.250	REF. NO.:	
SHEET NO. 1		REV. 3
DISTRIBUTION: MMP		

Marks:

Connection Diagram
GEM2034E-FIG7



End shield Assembly		
Part Description	DE Side Part#	ODE Side Part#
End Shield	115E4250AA1	115E4250LK1
Bearing	235A2616AA01	235A2616AA01
Slinger/Inproseal	149C4399G05	149C4399G05

Fan & Fan Cover Assembly	
Part Description	Part#
Fan	159C7100AA1
Fan Cover	128D6810AA1

Conduit & Accessories Box Assembly	
Part Description	Part#
Conduit Box	149C4429AA2

Mechanical Accessories	
Part Description	Part#
Brake	
Tachometer	