

Product Information Packet

November 9, 2016

Data shown is for the current revision model #. Ensure your nameplate model # matches.

Model Number:	5KS447SAA344B
Catalog Number:	M7765
Instruction Manual:	GEI-56128
Connection Diagram:	GEM2034E-FIG7
Outline Drawing:	239C6800AA

Accessory Connection Diagrams

Bearing Thermocouple:	None	Heater:	None
RTD:	None	Thermistor:	None
Thermostat:	None	Winding Thermocouple:	None
Bearing RTD:	None		

Table of Contents

Specification	01
Performance Characteristics	02
Outline Drawing	03
Connection Drawing(s)	04
Spare parts	05

Marks:

MODEL NUMBER:	5KS447SAA344B	Estimated Weight:	2940 Lbs
Outline Drawing:	239C6800AA	Time Rating:	CONT
Connection Diagram:	GEM2034E-FIG7	Enclosure:	TEFC
Instruction Book:	GEI-56128	Encl Construction:	X\$D
Design Code:	49BD3014B	Ambient Max(°C):	40
Type:	KS	Alt Ambient Max(°C):	65
Frame:	447T	Insulation Class:	H
Phases:	3	NEMA Design:	B
Poles:	6	Nominal Efficiency:	95.8 %
Output Power:	150HP 111KW	Guaranteed Efficiency:	95.4
RPM:	1190	3/4 Load Efficiency:	95.9
Voltage:	575	KVA Code:	G
Hertz:	60	Max KVAR:	37.9
Amps - FL:	136.0	Power Factor:	86.0
Service Factor:	1.25	Bearing - DE:	NU 318
Alt Service Factor:	1.00	Bearing - ODE:	6318ZC3

Enclosure is Totally Enclosed Fan-Cooled

Stamped Nameplate Notes:

ROLLER BEARING - FOR BELTED LOAD ONLY
SF AMPS 170.5
STAMP NP249A5564P051 AS BELOW:
MODEL:5KS447SAA344B S/N: XXX
CSA CERTIFIED CSA09.2216219 FOR EX NA IIC 200 C GC
CL 1 ZONE2 AEX NA IIC 200C;CL 1 DIV2 GRP ABCD 200C
IN -40C <= AMB <= 40C, 1.0 SF ON SINE-WAVE PWR
SURF TEMP 200C AT 1.25SF ON SINE-WAVE PWR
OR 200 C VT OR 215 C CT OR 200 C CHP PWM CONTROL
ALTERNATE RATING FOR PWM CONTROL 1.0SF 40C AMB
VT 0-60 HZ, CT 3-60 HZ, CHP 60-90 HZ.

Additional Information:

6P - T EXTN
700 CU IN - 3.00" NPT
OIL RESISTANT SLEEVING ON LEADS
B5F4C4 HIGH FATIGUE STEEL AISI 4142 SHAFT MATERIAL
F1 MOUNTING



Performance Characteristics

1st Winding 1st Connection

Design: 49BD3014B

Marks:

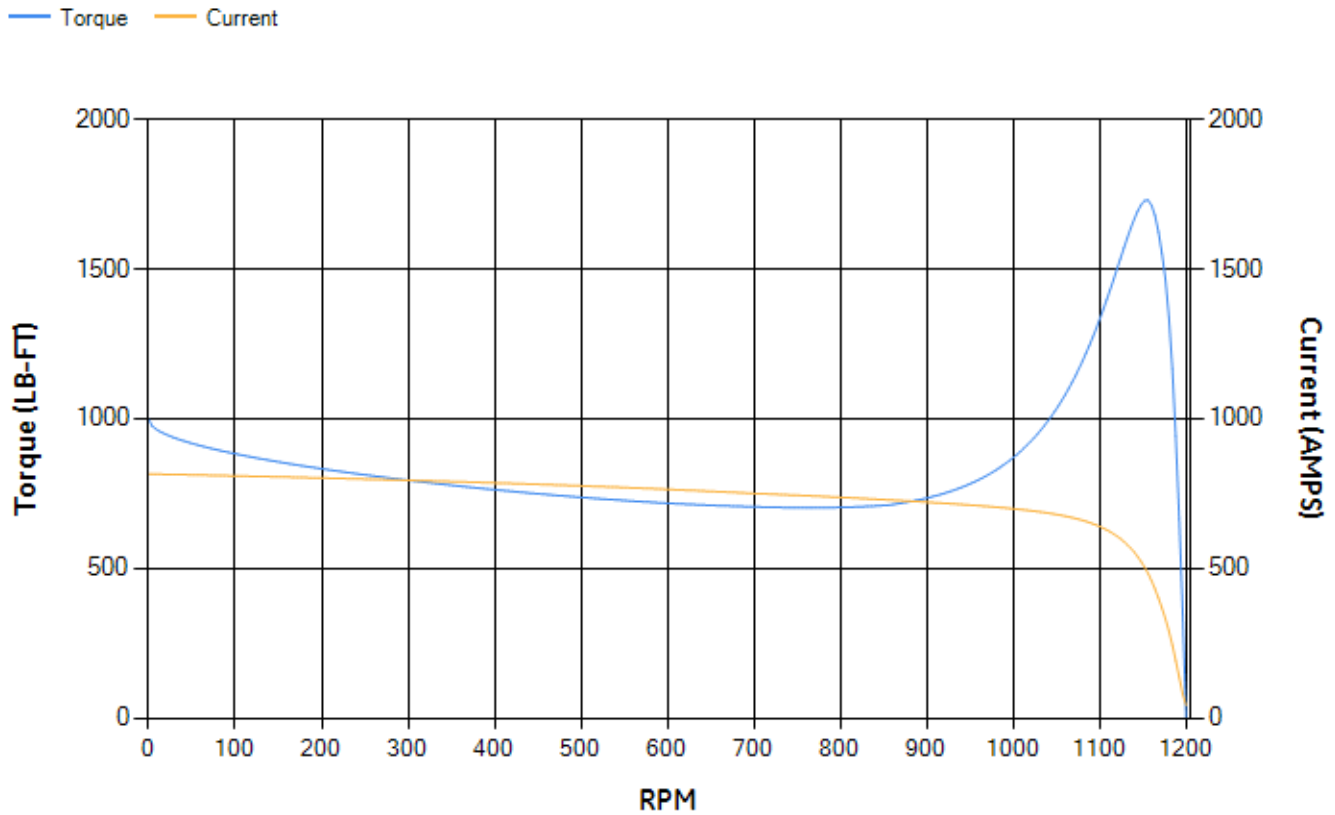
LOAD %	125.0	115.0	100.0	75.0	50.0	25.0	0.0
% EFF	95.12	95.35	95.84	95.91	95.68	93.67	0.00
% PF	86.57	86.49	85.95	83.3	76.02	55.48	3.82
AMPS	170.5	156.62	136.35	105.43	77.21	54.03	42.32

TORQ(FL)#FT	660.77	TORQ(LR)%FL	150.88	TORQ(BD)%FL	261.65
AMPS(LR)	815.26	PF AT START	0.27		

This motor is capable of two cold or one hot start with a maximum connected load inertia of 15234 Lb-Ft Sq (641.35 Kg-meter Sq)at 100% voltage, where the load torque varies with the square of the speed. Acceleration time with maximum inertia and the above load type is 95 seconds. Safe stall time at 100% voltage is 173 seconds cold, 114 seconds hot. Rotor inertia is 177.16 Lb-Ft Sq (7.46 Kg-meter Sq).

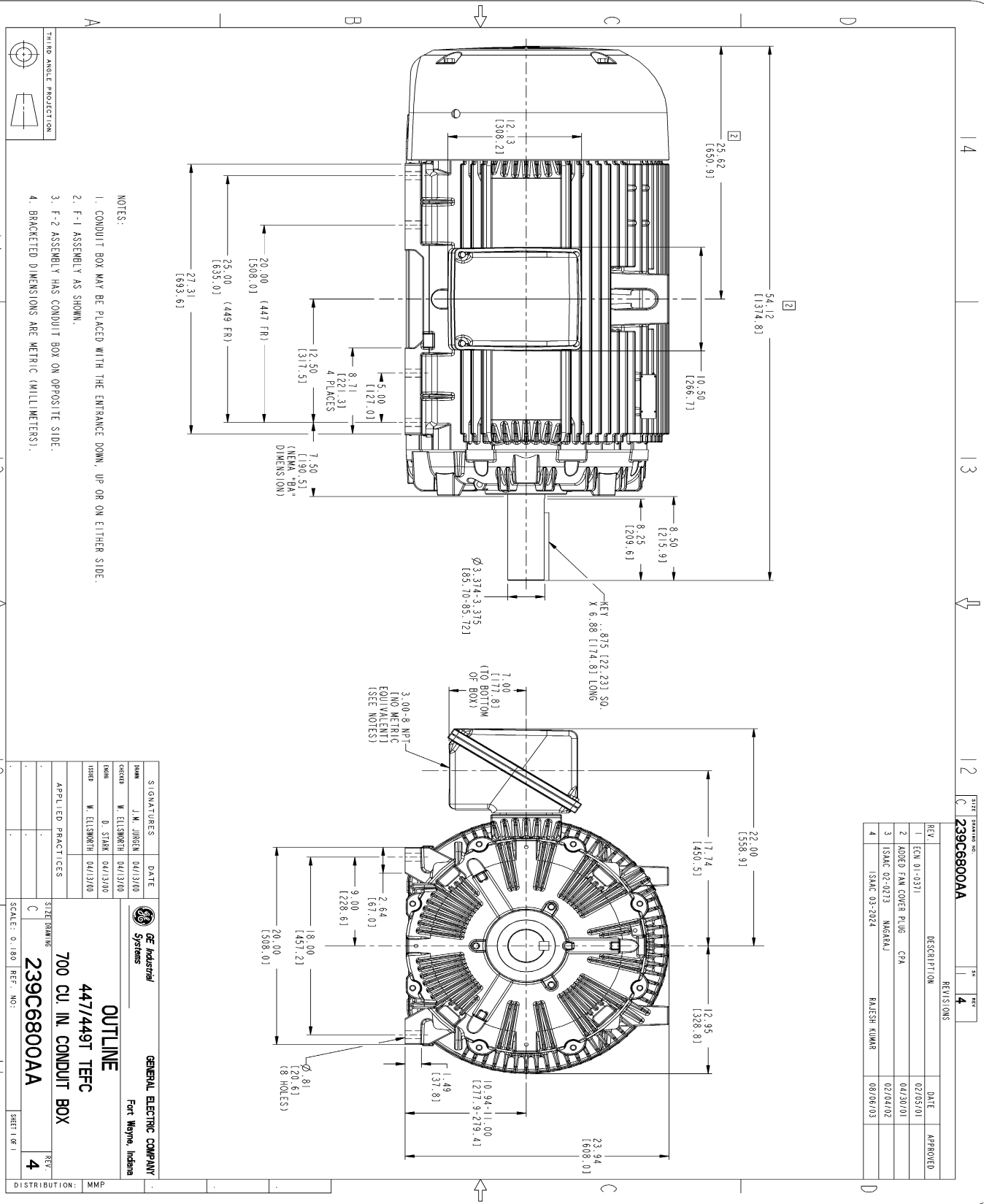
Open Circuit A-C:	1.243	Short Circuit D-C:	0.034
Short Circuit A-C:	0.059	X/R Ratio:	12.812
Stator Slots:	72	Rotor Slots:	58

Speed Torque Current Curve (First Connection, First Speed)



NAME: 103016807 OBJECT: 239C6800AA DATE: 08-Aug-03 12:01:27

Marks:



REV.	DESCRIPTION	DATE	APPROVED
1	ECN 01-0371	02/05/01	
2	MODIFIED FAN COVER PLUG CFA	04/30/01	
3	ISSAC 02-0213 MARGRAJ	02/04/02	
4	ISSAC 03-2024 RAJESH KUMAR	08/06/03	

SIGNATURES	DATE	GENERAL ELECTRIC COMPANY
DESIGNED BY: J.M. JOHNSON	04/13/00	Fort Wayne, Indiana
DRAWN BY: W. ELLSWORTH	04/13/00	
CHECKED BY: D. STARK	04/13/00	
ISSUED BY: W. ELLSWORTH	04/13/00	
APPLIED PRACTICES		
SCALE: 0.180 REF. NO:		
SHEET NO. 1		
DISTRIBUTION: MMP		

GE Industrial Systems

OUTLINE

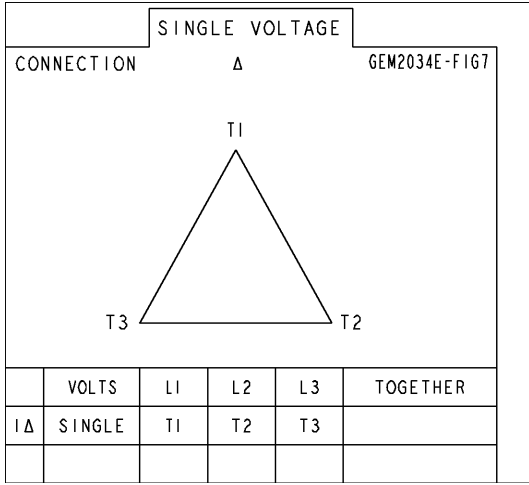
447/449T TEFC

700 CU. IN. CONDUIT BOX

239C6800AA

Marks:

Connection Diagram
GEM2034E-FIG7



End shield Assembly		
Part Description	DE Side Part#	ODE Side Part#
End Shield	115E4355AA1	115E4355LL1
Bearing	235A2519AA01	235A2514AG01
Slinger/Inproseal	149C4399G07	149C4399G07

Fan & Fan Cover Assembly	
Part Description	Part#
Fan	159C7100G03
Fan Cover	128D6841AA1

Conduit & Accessories Box Assembly	
Part Description	Part#
Conduit Box	118D4408AD2

Mechanical Accessories	
Part Description	Part#
Brake	
Tachometer	