

Product Information Packet

November 8, 2016

Data shown is for the current revision model #. Ensure your nameplate model # matches.

Model Number:	5KS449SAA118D9
Catalog Number:	M9514
Instruction Manual:	GEI-56128
Connection Diagram:	GEM2034E-FIG20
Outline Drawing:	239C6800FK

Accessory Connection Diagrams			
Bearing Thermocouple:	None	Heater:	None
RTD:	None	Thermistor:	None
Thermostat:	None	Winding Thermocouple:	None
Bearing RTD:	None		

Table of Contents

Specification	01
Performance Characteristics	02
Outline Drawing	03
Connection Drawing(s)	04
Spare parts	05



Marks:

MODEL NUMBER:	5KS449SAA118D9	Estimated Weight:	2770 Lbs
Outline Drawing:	239C6800FK	Time Rating:	CONT
Connection Diagram:	GEM2034E-FIG20	Enclosure:	TEFC
Instruction Book:	GEI-56128	Encl Construction:	X\$D
Design Code:	49BD0087A	Ambient Max(°C):	40
Type:	KS	Alt Ambient Max(°C):	60
Frame:	449TS	Insulation Class:	H
Phases:	3	NEMA Design:	B
Poles:	2	Nominal Efficiency:	95.8 %
Output Power:	250HP 185KW	Guaranteed Efficiency:	95.4
RPM:	3580	3/4 Load Efficiency:	96.2
Voltage:	460	KVA Code:	G
Hertz:	60	Max KVAR:	39.1
Amps - FL:	264.0	Power Factor:	92.5
Service Factor:	1.15	Bearing - DE:	6314ZC3
Alt Service Factor:	1.00	Bearing - ODE:	6314ZC3

Enclosure is Totally Enclosed Fan-Cooled

Stamped Nameplate Notes:

FOR DIRECT COUPLED LOAD ONLY
 ROT CW FACING ODE LEAD/PH SEQ 1-2-3/1-2-3
 STAMP NP249A5564P051 AS BELOW:
 MODEL:5KS449SAA118D9 S/N: XXX
 CSA CERTIFIED CSA09.2216219 FOR EX NA IIC 200 C GC
 CL 1 ZONE2 AEX NA IIC 200C;CL 1 DIV2 GRP ABCD 200C
 IN -40C <= AMB <= 40C, 1.0 SF ON SINE-WAVE PWR
 SURF TEMP 260C AT 1.15SF ON SINE-WAVE PWR
 OR 215 C VT OR 230 C CT OR --- C CHP PWM CONTROL
 ALTERNATE RATING FOR PWM CONTROL 1.0SF 40C AMB
 VT 0-60 HZ, CT 45-60 HZ, CHP --- HZ.

Additional Information:

2P - TS EXTN - SPLIT LEAD
 1260 CU IN - 2(4.00" NPT)
 C/B GRD PLATE
 OIL RESISTANT SLEEVING ON LEADS
 F1 MOUNTING

Performance Characteristics

1st Winding 1st Connection

Design: 49BD0087A

Marks:

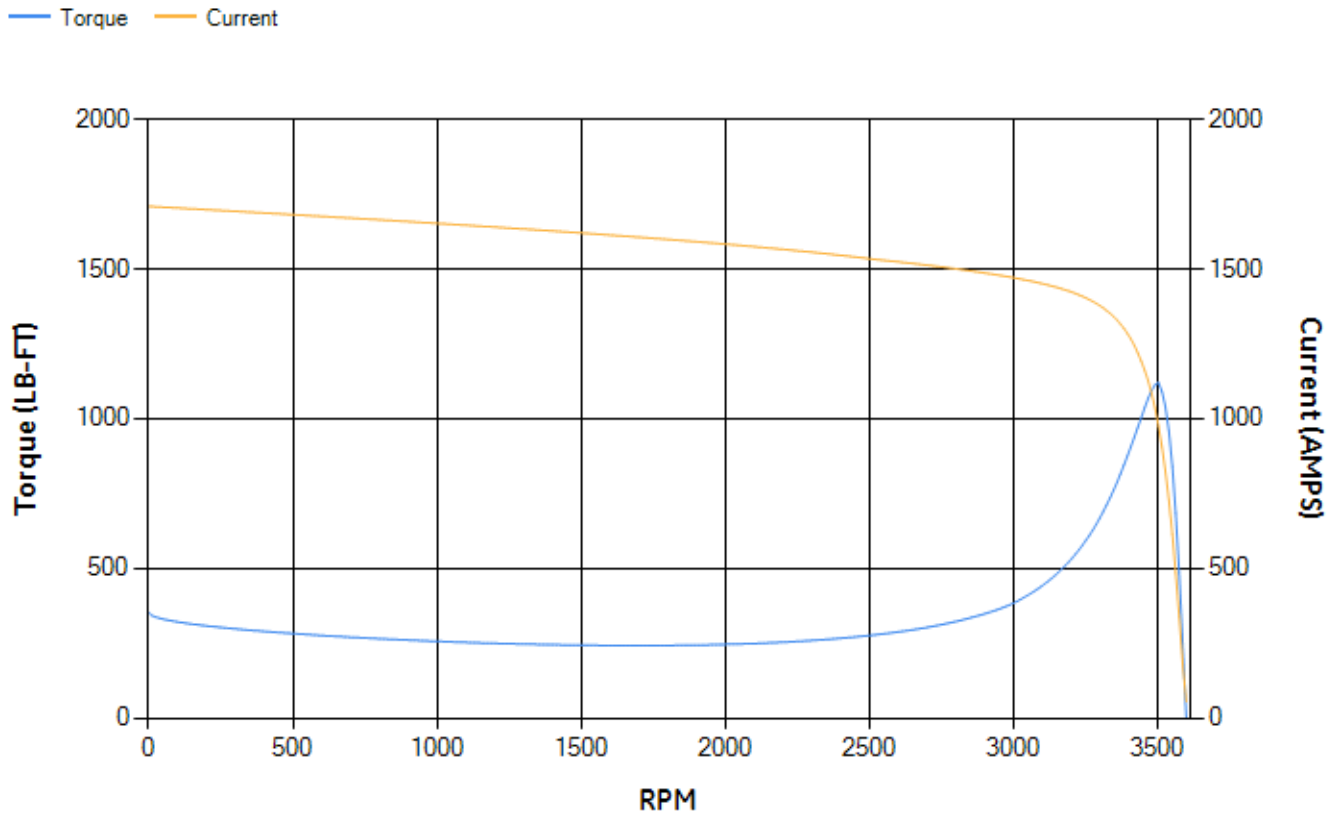
LOAD %	125.0	115.0	100.0	75.0	50.0	25.0	0.0
% EFF	95.5	95.7	96.15	96.17	95.93	94.01	0.00
% PF	92.17	92.32	92.3	91.34	87.61	72.96	5.86
AMPS	332.27	304.57	263.66	199.78	139.2	85.28	54.46

TORQ(FL)#FT	366.7	TORQ(LR)%FL	96.1	TORQ(BD)%FL	305.15
AMPS(LR)	1709.36	PF AT START	0.18		

This motor is capable of two cold or one hot start with a maximum connected load inertia of 725 Lb-Ft Sq (30.52 Kg-meter Sq) at 100% voltage, where the load torque varies with the square of the speed. Acceleration time with maximum inertia and the above load type is 42 seconds. Safe stall time at 100% voltage is 98 seconds cold, 50 seconds hot. Rotor inertia is 48.55 Lb-Ft Sq (2.04 Kg-meter Sq).

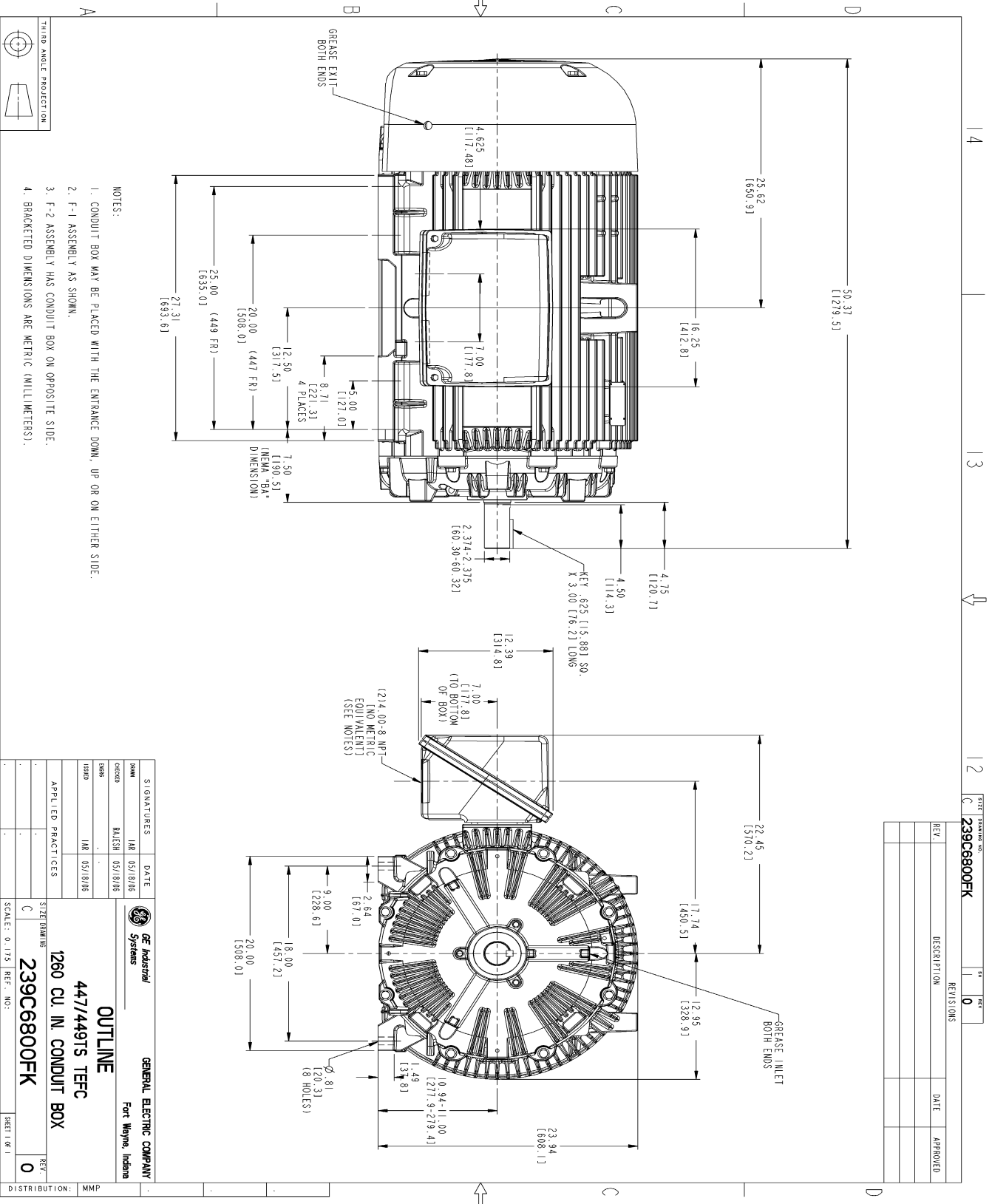
Open Circuit A-C:	2.251	Short Circuit D-C:	0.037
Short Circuit A-C:	0.075	X/R Ratio:	13.78
Stator Slots:	48	Rotor Slots:	38

Speed Torque Current Curve (First Connection, First Speed)



NAME: 501053131 OBJECT: 239C6800FK DATE: 18-May-06 21:07:42

Marks:



Marks:

Connection Diagram
GEM2034E-FIG20



End shield Assembly		
Part Description	DE Side Part#	ODE Side Part#
End Shield	115E4354AA1	115E4354LL1
Bearing	235A2616AA01	235A2616AA01
Slinger/Inproseal	149C4399G05	149C4399G05

Fan & Fan Cover Assembly	
Part Description	Part#
Fan	149C4261AK1
Fan Cover	128D6841AC1

Conduit & Accessories Box Assembly	
Part Description	Part#
Conduit Box	179B9058G03

Mechanical Accessories	
Part Description	Part#
Brake	
Tachometer	