

Product Information Packet

November 8, 2016

Data shown is for the current revision model #. Ensure your nameplate model # matches.

Model Number:	5KS444LAA304C
Catalog Number:	M7961
Instruction Manual:	GEI-56128
Connection Diagram:	GEM2034E-FIG7
Outline Drawing:	239CC600AA

Accessory Connection Diagrams			
Bearing Thermocouple:	None	Heater:	None
RTD:	None	Thermistor:	None
Thermostat:	None	Winding Thermocouple:	None
Bearing RTD:	None		

Table of Contents	
Specification	01
Performance Characteristics	02
Outline Drawing	03
Connection Drawing(s)	04

Marks:

MODEL NUMBER:	5KS444LAA304C	Estimated Weight:	1850 Lbs
Outline Drawing:	239CC600AA	Time Rating:	CONT
Connection Diagram:	GEM2034E-FIG7	Enclosure:	TEFC
Instruction Book:	GEI-56128	Encl Construction:	SD
Design Code:	44BD3070B	Ambient Max(°C):	40
Type:	KS	Alt Ambient Max(°C):	--
Frame:	444T	Insulation Class:	F
Phases:	3	NEMA Design:	A
Poles:	6	Nominal Efficiency:	95.0 %
Output Power:	100HP 74KW	Guaranteed Efficiency:	94.1
RPM:	1190	3/4 Load Efficiency:	95.0
Voltage:	575	KVA Code:	H
Hertz:	60	Max KVAR:	36.6
Amps - FL:	96.7	Power Factor:	81.5
Service Factor:	1.15	Bearing - DE:	6318ZC3S0
Alt Service Factor:	--	Bearing - ODE:	6318ZC3S0

Enclosure is Totally Enclosed Fan-Cooled

Stamped Nameplate Notes:

INVERTER DUTY PER NEMA MG1 PART 31
 ALTERNATE RATING FOR PWM CONTROL:1.0SF 40C AMBIENT
 VAR TORQUE RANGE 0-60 HZ

Additional Information:

6P - T EXTN
 700 CU IN - 3.00" NPT
 OIL RESISTANT SLEEVING ON LEADS
 F1 MOUNTING
 VIBRATION LIMIT 0.15 INCH PER SEC

Performance Characteristics

1st Winding 1st Connection

Design: 44BD3070B

Marks:

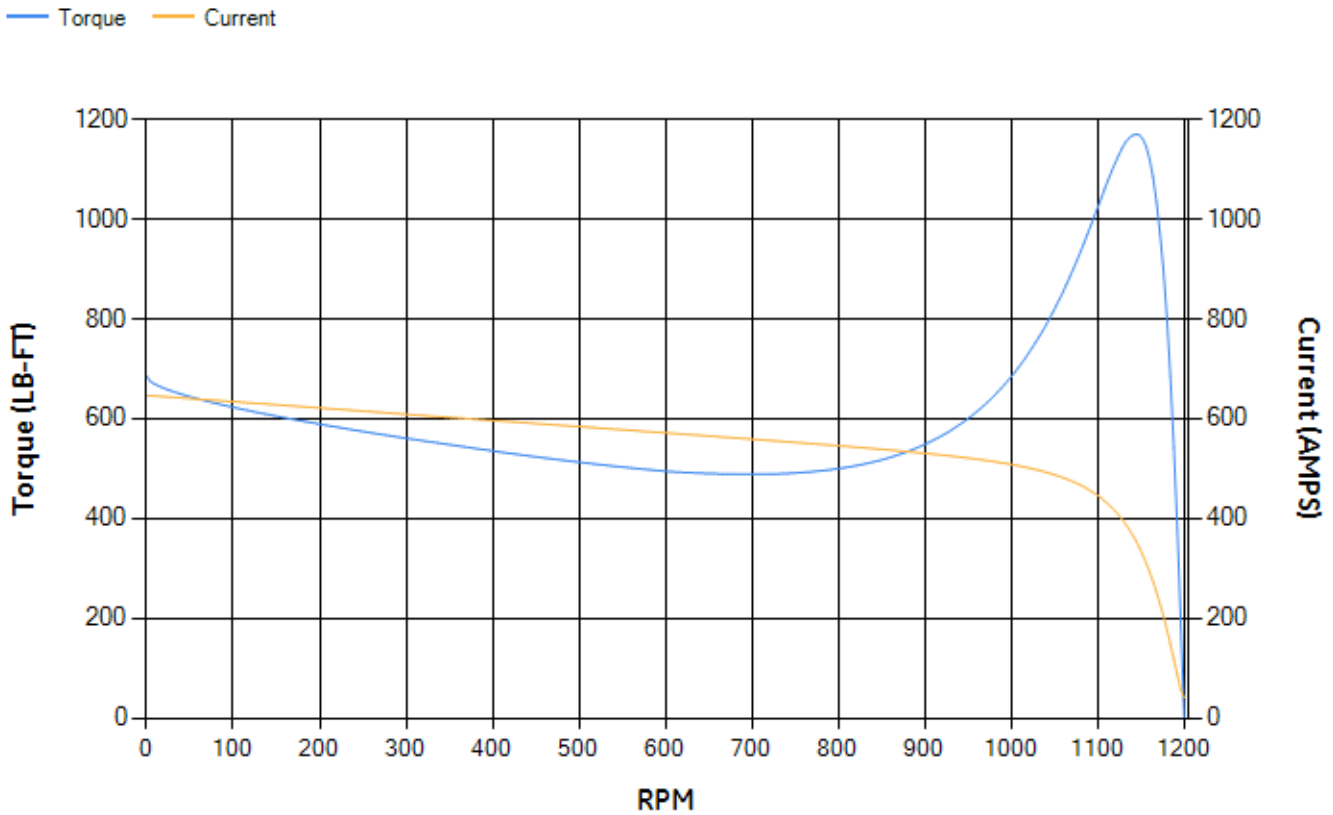
LOAD %	125.0	115.0	100.0	75.0	50.0	25.0	0.0
% EFF	94.42	94.62	95.07	95	94.46	91.53	0.00
% PF	83.56	82.95	81.46	76.64	66.18	43.76	3.68
AMPS	118.63	109.7	96.69	77.13	59.88	46.73	40.7

TORQ(FL)#FT	441.17	TORQ(LR)%FL	155.34	TORQ(BD)%FL	264.57
AMPS(LR)	646.57	PF AT START	0.31		

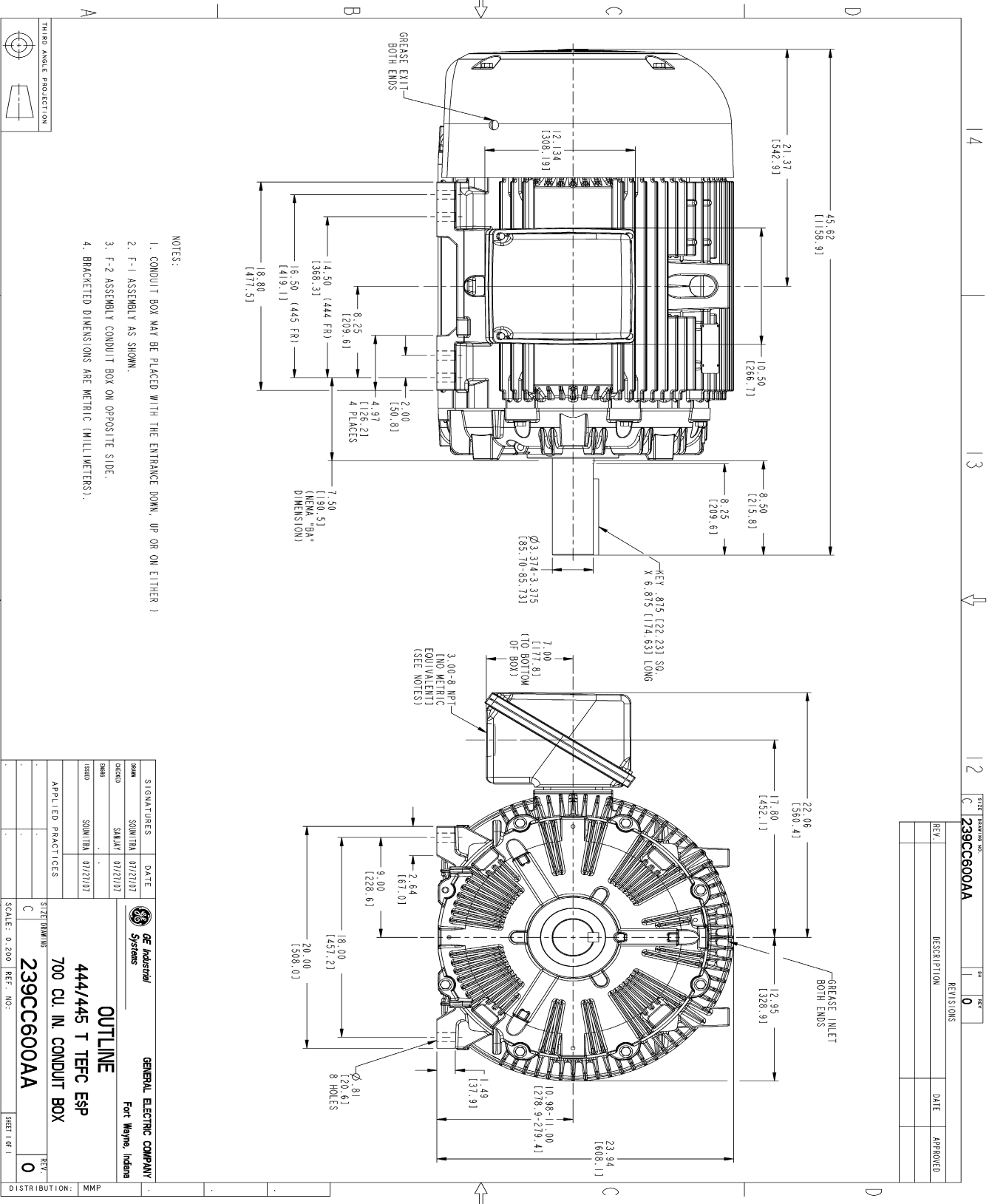
This motor is capable of two cold or one hot start with a maximum connected load inertia of 4253 Lb-Ft Sq (179.05 Kg-meter Sq)at 100% voltage, where the load torque varies with the square of the speed. Acceleration time with maximum inertia and the above load type is 36 seconds. Safe stall time at 100% voltage is 73 seconds cold, 44 seconds hot. Rotor inertia is 73.82 Lb-Ft Sq (3.11 Kg-meter Sq).

Open Circuit A-C:	0.716	Short Circuit D-C:	0.027
Short Circuit A-C:	0.048	X/R Ratio:	10.187
Stator Slots:	72	Rotor Slots:	58

Speed Torque Current Curve (First Connection, First Speed)



Marks:



REV.	DESCRIPTION	DATE	APPROVED

SIGNATURES	DATE	GE Industrial Systems	GENERAL ELECTRIC COMPANY Fort Wayne, Indiana
DRAWN SQUINTA	01/21/07		
CHECKED SALAN	01/21/07		
ISSUED SQUINTA	01/21/07		
APPLIED PRACTICES			
SIZING DIMENSIONS			
700 CU. IN. CONDUIT BOX			
444/445 T. TEFC ESP			
239CC600AA			
SCALE: 0.200	REF. NO:		

DISTRIBUTION: MMP

Marks:

Connection Diagram
GEM2034E-FIG7

