

# Product Information Packet

November 9, 2016

Data shown is for the current revision model #. Ensure your nameplate model # matches.

<b>Model Number:</b>	<b>5KFS901XAA217</b>
<b>Catalog Number:</b>	<b>N404</b>
<b>Instruction Manual:</b>	GEI-M1036
<b>Connection Diagram:</b>	GEM2034E-FIG116
<b>Outline Drawing:</b>	240C1010AC

<b>Accessory Connection Diagrams</b>			
<b>Bearing Thermocouple:</b>	None	<b>Heater:</b>	None
<b>RTD:</b>	None	<b>Thermistor:</b>	None
<b>Thermostat:</b>	None	<b>Winding Thermocouple:</b>	None
<b>Bearing RTD:</b>	None		

<b>Table of Contents</b>	
Specification	01
Performance Characteristics	02
Outline Drawing	03
Connection Drawing(s)	04

**Marks:**

<b>MODEL NUMBER:</b>	<b>5KFS901XAA217</b>	<b>Estimated Weight:</b>	20 Kg
<b>Outline Drawing:</b>	240C1010AC	<b>Duty:</b>	S1
<b>Connection Diagram:</b>	GEM2034E-FIG116	<b>Enclosure:</b>	TEFC
<b>Connection:</b>	DELTA	<b>Encl Construction:</b>	841
<b>Instruction Book:</b>	GEI-M1036	<b>Cooling(IC):</b>	411
<b>Design Code:</b>	14RD1001H	<b>Protection (IP):</b>	55
<b>Type:</b>	KFS	<b>Ambient Max (°C):</b>	40
<b>Frame:</b>	90S	<b>Alt Ambient Max (°C):</b>	--
<b>Mounting(IM):</b>	B3	<b>Ambient Min (°C):</b>	-40
<b>Phases:</b>	3	<b>Insulation Class:</b>	H
<b>Poles:</b>	4	<b>IEC Design:</b>	N
<b>Output Power:</b>	0.75 KW	<b>Nominal Efficiency:</b>	84 %
<b>RPM:</b>	1425	<b>Guaranteed Efficiency:</b>	81.6
<b>Voltage:</b>	400	<b>Max KVAR:</b>	0.4
<b>Hertz:</b>	50	<b>Power Factor:</b>	83.0
<b>Amps - FL:</b>	1.6	<b>Bearing - DE:</b>	6205ZC3
<b>Service Factor:</b>	1.00	<b>Bearing - ODE:</b>	6205ZC3
<b>Alt Service Factor:</b>	--	<b>Vibration:</b>	1.4 mm/s

**Enclosure is Totally Enclosed Fan-Cooled**

**Stamped Nameplate Notes:**

GREASE: EXXON POLYREX EM  
 DE BRG 25BC02XP3 ODE BRG 25BC02XP3  
 STAMP AUX NP "MAXIMUM EXPOSED INTERNAL AND  
 EXTERNAL SURFACE TEMPERATURES DO NOT EXCEED  
 200C UNDER USUAL SERVICE CONDITIONS AT 1.0SF"  
 STAMP NP249A5499AB AS BELOW  
 E EX NA II T3 X

**Additional Information:**

4P - 24MM DIA X 50MM LONG EXTN - WYE START DELTA RUN  
 FOOT MOUNTED-HORIZONTAL-C/BOX RHS  
 30 CONDUIT BOX - (2) M25X1.5 - M4 TERM BLOCK - RHS FROM DE  
 CONDUIT BOX ASSEMBLY WITH CABLE ENTRY TOWARDS FEET  
 SPL PAINTED SURFACES: FRAME ID, SHAFT, INSIDE OF  
 FAN COVER, AND ODE/SHLD TO PREVENT CORROSION  
 ROUTINE AND 5 POINT VIBRATION TESTS INCL IN C/BOX  
 GROUND SCREWS ON FRAME  
 SHAFT RUNOUT LIMIT .025 MM TIR  
 OIL RESISTANT SLEEVING ON LEADS  
 CUSTOMER TO INSTALL SUITABLE CABLE GLANDS/PLUGS IN  
 CONDUIT HOLES BEFORE OPERATION

**Performance Characteristics**

1st Winding 1st Connection

**Design: 14RD1001H**

Marks:

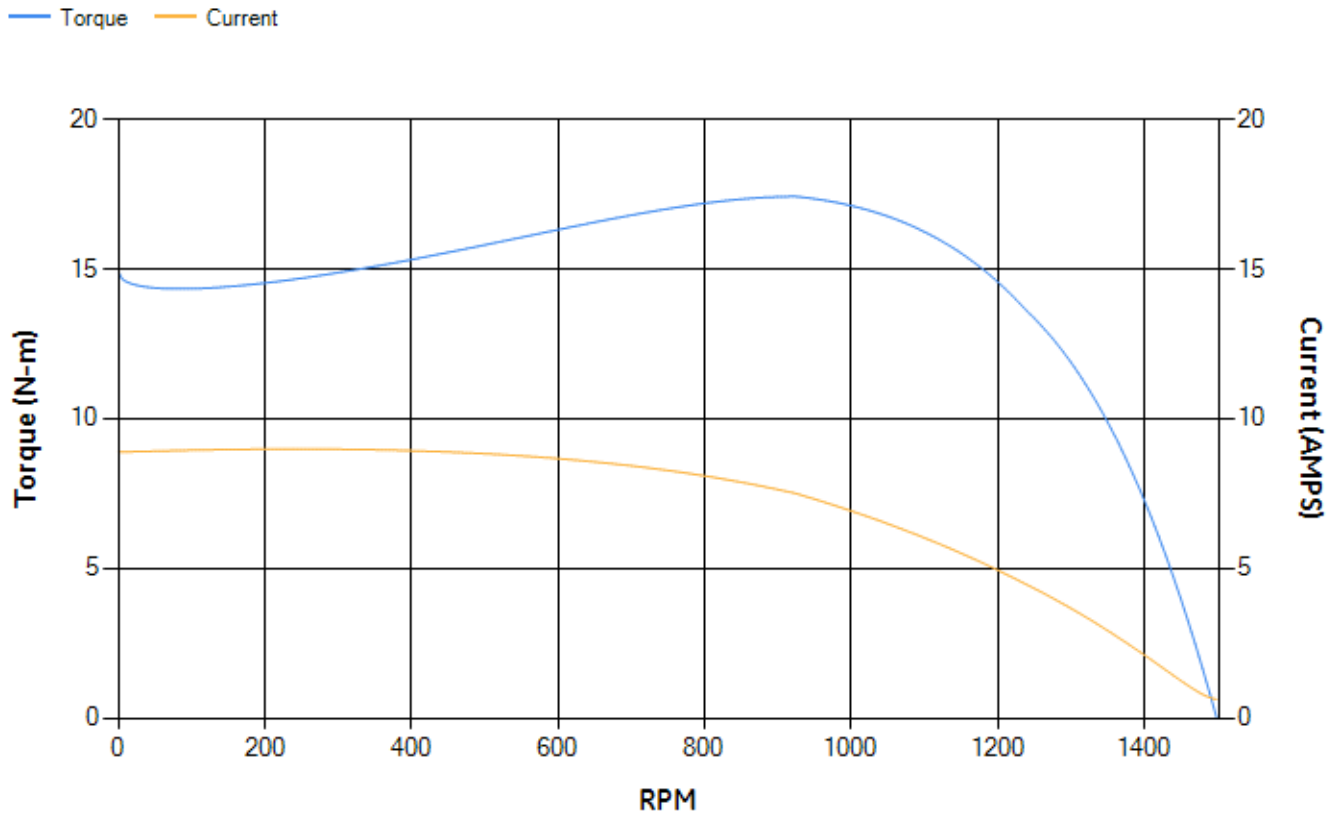
LOAD %	125.0	115.0	100.0	75.0	50.0	25.0	0.0
% EFF	81.67	82.73	84.29	85.6	85.48	80.32	0.00
% PF	86.58	85.56	84.65	77.53	66.14	44.29	8.52
AMPS	1.91	1.76	1.51	1.22	0.96	0.76	0.62

TORQ(FL)N-m	5.03	TORQ(LR)%FL	296.3	TORQ(BD)%FL	333.82
AMPS(LR)	8.88	PF AT START	0.69		

This motor is capable of two cold or one hot start with a maximum connected load inertia of 6.1 Kg-meter Sqat 100% voltage, where the load torque varies with the square of the speed. Acceleration time with maximum inertia and the above load type is 69 seconds. Safe stall time at 100% voltage is 117 seconds cold, 98 seconds hot. Rotor inertia is 0 Kg-meter Sq.

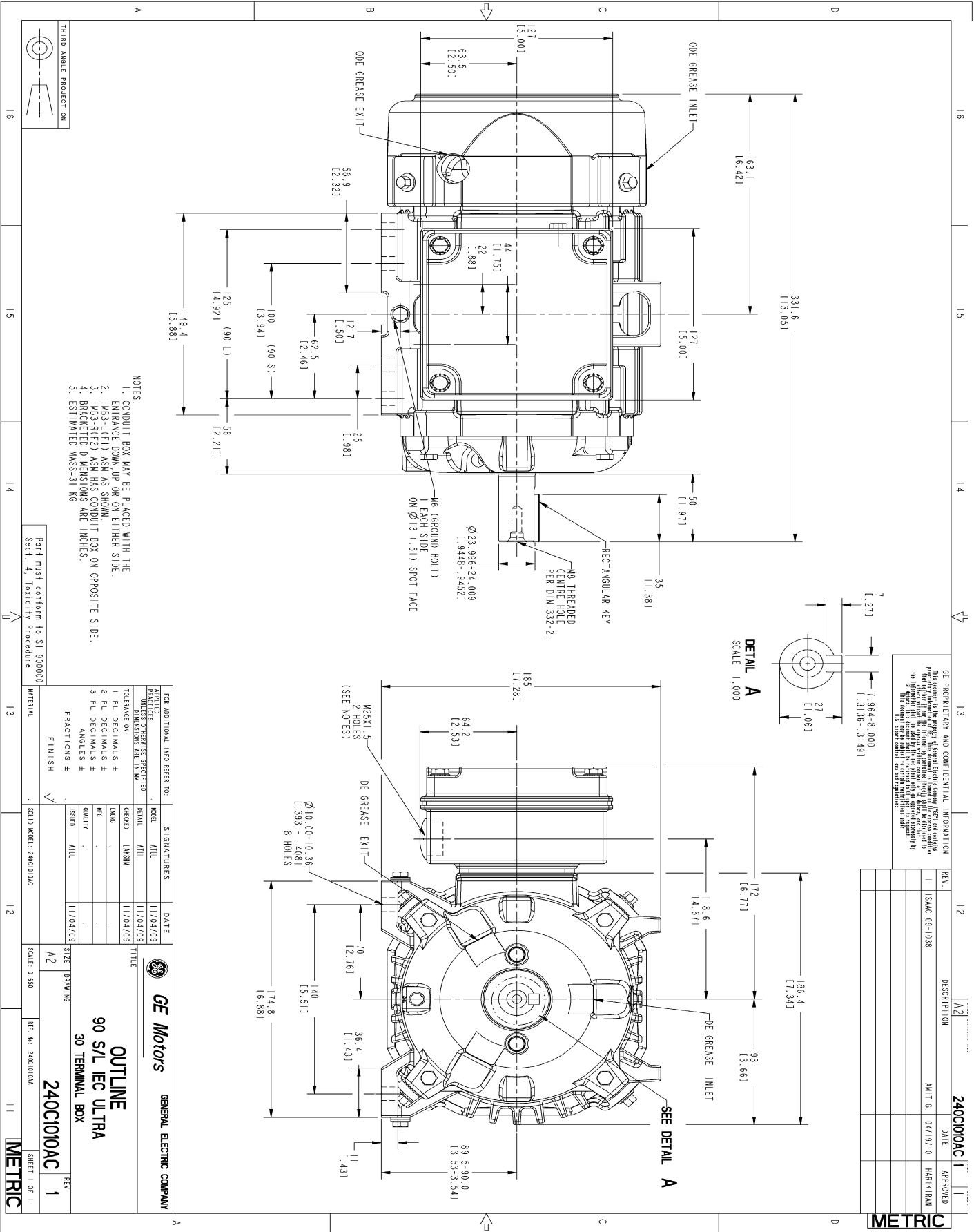
Open Circuit A-C:	0.148	Short Circuit D-C:	0.006
Short Circuit A-C:	0.006	X/R Ratio:	1.749
Stator Slots:	36	Rotor Slots:	48

**Speed Torque Current Curve (First Connection, First Speed)**



NAME:501479532 OBJECT:240C1010AC DATE:19-Apr-10 18:29:40

Marks:



GE PROPRIETARY AND CONFIDENTIAL INFORMATION  
 This document is the property of General Electric Company ("GE") and contains  
 proprietary information. It is intended for internal use only. No part of this  
 document may be reproduced, stored in a retrieval system, or transmitted, in  
 any form or by any means, electronic, mechanical, photocopying, recording,  
 or by any information storage and retrieval system, without the prior written  
 permission of GE. If you are not an authorized user, please contact your local  
 GE representative for more information. © 2016 GE. All rights reserved.  
 The information contained herein is for informational purposes only. It is not  
 intended to be used as a substitute for the actual product or its operation.  
 GE reserves the right to change specifications without notice.

REV.	DESCRIPTION	DATE	APPROVED
1	ISAAC 09-1038	04/19/10	HARI KRISHAN

- NOTES:
1. CONDUIT BOX MAY BE PLACED WITH THE ENTRANCE DOWN OR UP ON EITHER SIDE.
  2. IWB3-1(FE1) ASM HAS CONDUIT BOX ON OPPOSITE SIDE.
  3. IWB3-1(FE2) ASM HAS CONDUIT BOX ON OPPOSITE SIDE.
  4. BRACKETED DIMENSIONS ARE IN INCHES.
  5. ESTIMATED MASS=31 KG

FOR ADDITIONAL INFO REFER TO:	SIGNATURES	DATE
MODEL TITLE		11/04/09
DETAIL TITLE		11/04/09
DATE		11/04/09
DESIGNER		11/04/09
CHECKED		11/04/09
APPROVED		11/04/09
DATE		11/04/09

FOR ADDITIONAL INFO REFER TO:	SIGNATURES	DATE
MODEL TITLE		11/04/09
DETAIL TITLE		11/04/09
DATE		11/04/09
DESIGNER		11/04/09
CHECKED		11/04/09
APPROVED		11/04/09
DATE		11/04/09

90 S/L IEC UL TRA  
 30 TERMINAL BOX  
 240C1010AC  
 1

Part must conform to SI 900000  
 Sect. 4, Toxicity Procedure

**GE Motors** GENERAL ELECTRIC COMPANY

**METRIC**

SCALE: 0.850

SHEET 1 OF 1

Marks:

**Connection Diagram**  
**GEM2034E-FIG116**

