

Product Information Packet

November 8, 2016

Data shown is for the current revision model #. Ensure your nameplate model # matches.

Model Number:	5KS449LAA267A
Catalog Number:	M7684
Instruction Manual:	GEI-56128
Connection Diagram:	GEM2034E-FIG20
Outline Drawing:	239CC800AG

Accessory Connection Diagrams			
Bearing Thermocouple:	None	Heater:	None
RTD:	None	Thermistor:	None
Thermostat:	None	Winding Thermocouple:	None
Bearing RTD:	None		

Table of Contents	
Specification	01
Performance Characteristics	02
Outline Drawing	03
Connection Drawing(s)	04

Marks:

MODEL NUMBER:	5KS449LAA267A	Estimated Weight:	3050 Lbs
Outline Drawing:	239CC800AG	Time Rating:	CONT
Connection Diagram:	GEM2034E-FIG20	Enclosure:	TEFC
Instruction Book:	GEI-56128	Encl Construction:	SD
Design Code:	49BD1176B	Ambient Max(°C):	40
Type:	KS	Alt Ambient Max(°C):	--
Frame:	449T	Insulation Class:	F
Phases:	3	NEMA Design:	A
Poles:	4	Nominal Efficiency:	96.2 %
Output Power:	350HP 259KW	Guaranteed Efficiency:	95.4
RPM:	1790	3/4 Load Efficiency:	96.4
Voltage:	575	KVA Code:	J
Hertz:	60	Max KVAR:	115.4
Amps - FL:	322.0	Power Factor:	84.5
Service Factor:	1.15	Bearing - DE:	6318ZC3S0
Alt Service Factor:	--	Bearing - ODE:	6318ZC3S0

Enclosure is Totally Enclosed Fan-Cooled

Stamped Nameplate Notes:

FOR DIRECT COUPLED LOAD ONLY
 INVERTER DUTY PER NEMA MG1 PART 31
 ALTERNATE RATING FOR PWM CONTROL:
 1.0 SF VAR TORQUE RANGE 0-60 HZ

Additional Information:

4P - T EXTN - SPLIT LEAD
 1260 CU IN - 2(4.00" NPT)
 C/B GRD PLATE
 OIL RESISTANT SLEEVING ON LEADS
 F1 MOUNTING
 VIBRATION LIMIT 0.15 INCH PER SEC

Performance Characteristics

1st Winding 1st Connection

Design: 49BD1176B

Marks:

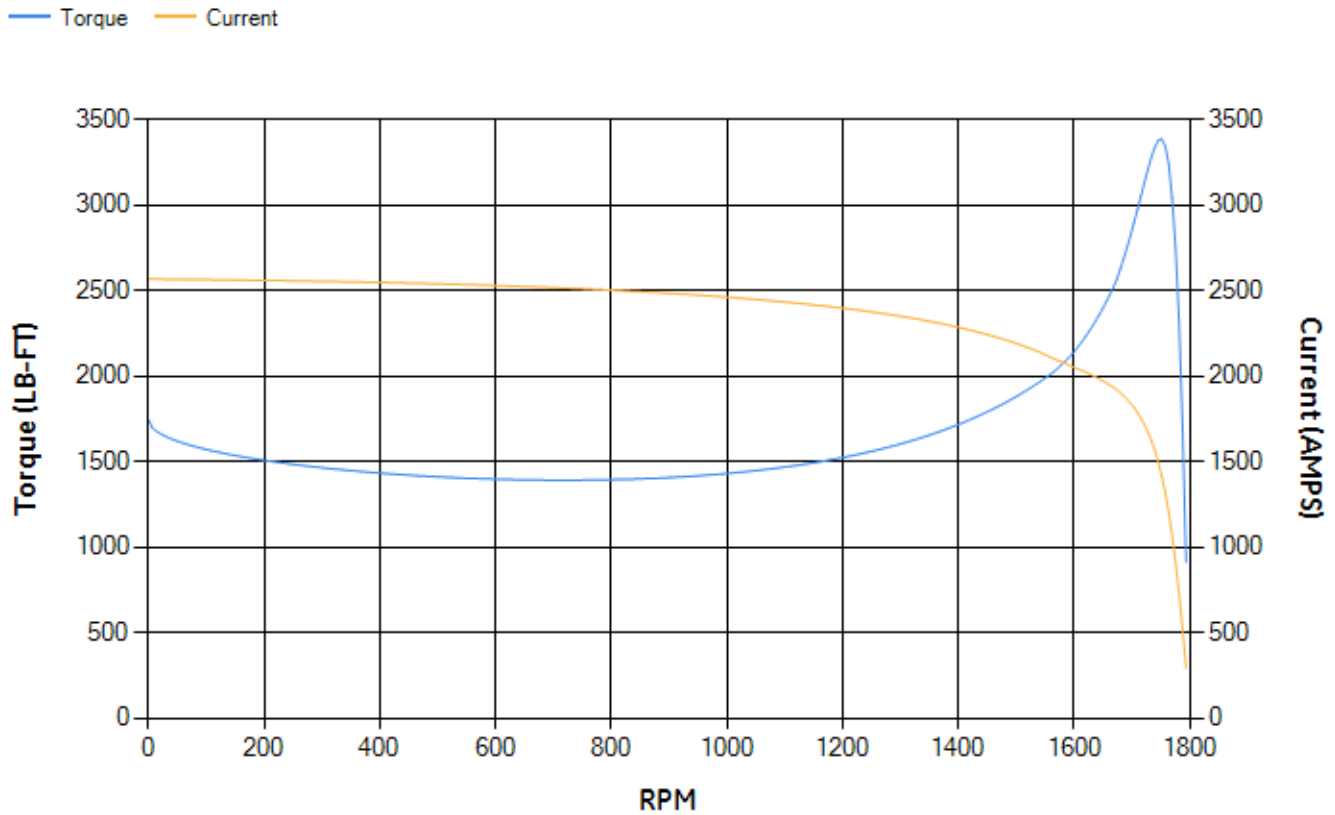
LOAD %	125.0	115.0	100.0	75.0	50.0	25.0	0.0
% EFF	95.98	96.12	96.49	96.38	96.01	93.91	0.00
% PF	86.46	85.82	84.35	79.73	69.59	46.63	2.83
AMPS	394.72	365.34	322.02	255.76	196.13	149.63	128.33

TORQ(FL)#FT	1025.29	TORQ(LR)%FL	169.9	TORQ(BD)%FL	330.04
AMPS(LR)	2565.8	PF AT START	0.25		

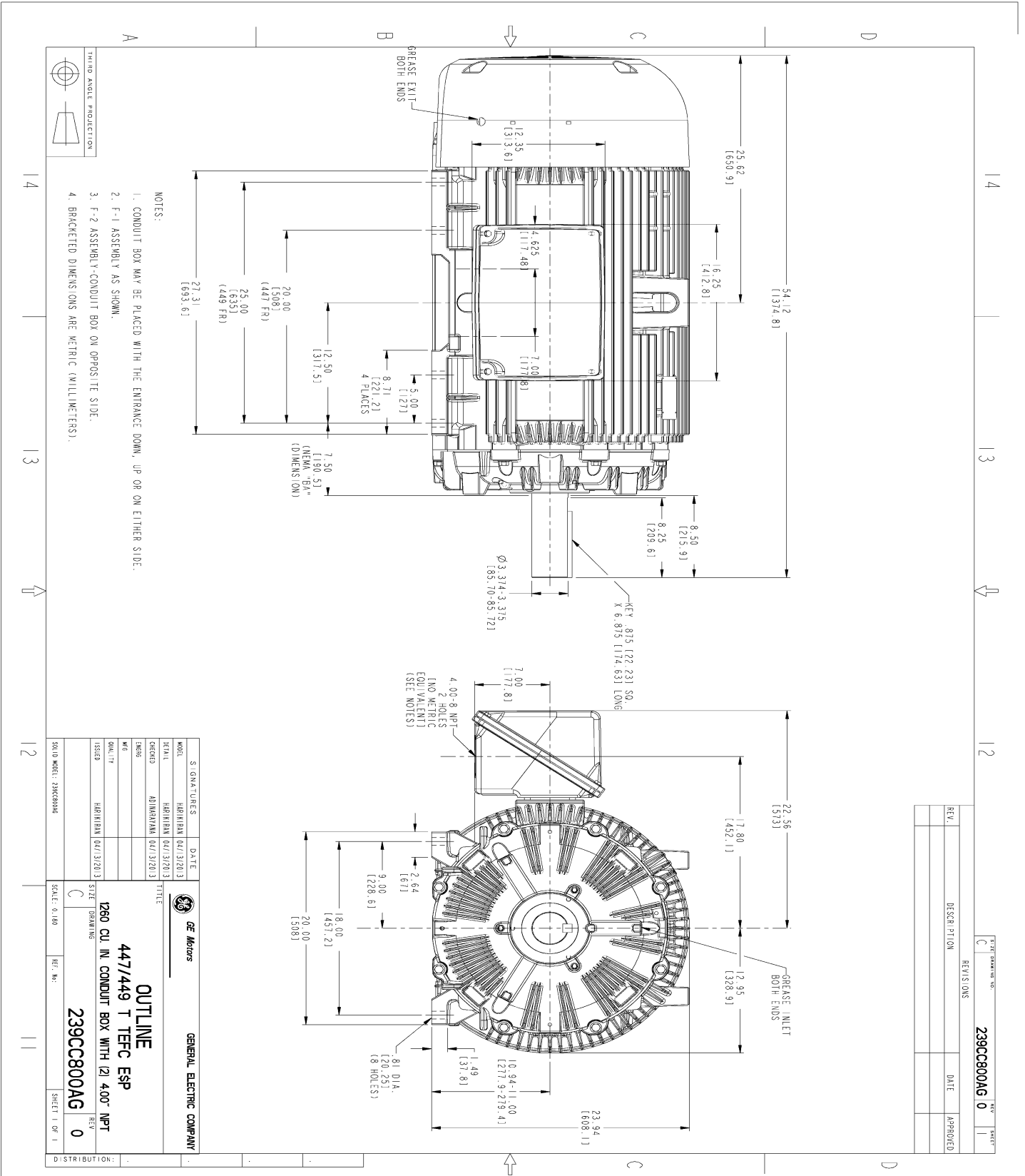
This motor is capable of two cold or one hot start with a maximum connected load inertia of 5270 Lb-Ft Sq (221.87 Kg-meter Sq)at 100% voltage, where the load torque varies with the square of the speed. Acceleration time with maximum inertia and the above load type is 24 seconds. Safe stall time at 100% voltage is 74 seconds cold, 38 seconds hot. Rotor inertia is 133.5 Lb-Ft Sq (5.62 Kg-meter Sq).

Open Circuit A-C:	1.449	Short Circuit D-C:	0.026
Short Circuit A-C:	0.065	X/R Ratio:	9.906
Stator Slots:	72	Rotor Slots:	58

Speed Torque Current Curve (First Connection, First Speed)

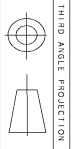


Marks:



NOTES:

- 1. CONDUIT BOX MAY BE PLACED WITH THE ENTRANCE DOWN, UP OR ON EITHER SIDE.
- 2. F-1 ASSEMBLY AS SHOWN.
- 3. F-2 ASSEMBLY-CONDUIT BOX ON OPPOSITE SIDE.
- 4. BRACKETED DIMENSIONS ARE METRIC (MILLIMETERS).



REV.	DESCRIPTION	DATE	APPROVED

MODEL	SIGNATURES	DATE	REV. SHEET
5KS449LAA267A	HARRISMAN (241/3120.3)		0 1
DESIGN	HARRISMAN (241/3120.3)		
CHECKED	HARRISMAN (241/3120.3)		
DATE			
ISSUED	HARRISMAN (241/3120.3)		
SCALE: 0.180	REV. NO.		
 GENERAL ELECTRIC COMPANY OUTLINE 447/449 T TEFC ESP 1260 CU IN CONDUIT BOX WITH 121 400" NPT 239CC800AG			
DISTRIBUTION:			

Marks:

Connection Diagram
GEM2034E-FIG20

