

# Product Information Packet

November 8, 2016

Data shown is for the current revision model #. Ensure your nameplate model # matches.

<b>Model Number:</b>	<b>5KS365XAA1002D</b>
<b>Catalog Number:</b>	<b>M9531</b>
<b>Instruction Manual:</b>	GEI-56128
<b>Connection Diagram:</b>	GEM2034E-FIG7
<b>Outline Drawing:</b>	239C6205CN

Accessory Connection Diagrams			
<b>Bearing Thermocouple:</b>	None	<b>Heater:</b>	None
<b>RTD:</b>	None	<b>Thermistor:</b>	None
<b>Thermostat:</b>	None	<b>Winding Thermocouple:</b>	None
<b>Bearing RTD:</b>	None		

## Table of Contents

Specification	01
Performance Characteristics	02
Outline Drawing	03
Connection Drawing(s)	04
Spare parts	05



**Marks:**

<b>MODEL NUMBER:</b>	<b>5KS365XAA1002D</b>	<b>Estimated Weight:</b>	1030 Lbs
<b>Outline Drawing:</b>	239C6205CN	<b>Time Rating:</b>	CONT
<b>Connection Diagram:</b>	GEM2034E-FIG7	<b>Enclosure:</b>	TEFC
<b>Instruction Book:</b>	GEI-56128	<b>Encl Construction:</b>	841
<b>Design Code:</b>	36BD0118A	<b>Ambient Max(°C):</b>	40
<b>Type:</b>	KS	<b>Alt Ambient Max(°C):</b>	--
<b>Frame:</b>	365TSC	<b>Insulation Class:</b>	H
<b>Phases:</b>	3	<b>NEMA Design:</b>	B
<b>Poles:</b>	2	<b>Nominal Efficiency:</b>	94.5 %
<b>Output Power:</b>	75HP 55.5KW	<b>Guaranteed Efficiency:</b>	94.1
<b>RPM:</b>	3575	<b>3/4 Load Efficiency:</b>	--
<b>Voltage:</b>	460	<b>KVA Code:</b>	G
<b>Hertz:</b>	60	<b>Max KVAR:</b>	20.8
<b>Amps - FL:</b>	85.9	<b>Power Factor:</b>	86.5
<b>Service Factor:</b>	1.15	<b>Bearing - DE:</b>	6314ZZC3
<b>Alt Service Factor:</b>	--	<b>Bearing - ODE:</b>	6314ZZC3

**Enclosure is Totally Enclosed Fan-Cooled**

**Stamped Nameplate Notes:**

IEEE-STD-841-2009  
 DE BRG 70BC03JPP3, ODE BRG 70BC03JPP3  
 STAMP NP249A5564P051 AS BELOW:  
 MODEL:5KS365XAA1002D S/N: XXX  
 CSA CERTIFIED CSA09.2216219 FOR EX NA IIC 200 C GC  
 CL 1 ZONE2 AEX NA IIC 200C;CL 1 DIV2 GRP ABCD 200C  
 IN -25C <= AMB <= 40C, 1.0 SF ON SINE-WAVE PWR  
 SURF TEMP 215C AT 1.15SF ON SINE-WAVE PWR  
 OR 200 C VT OR 230 C CT OR --- C CHP PWM CONTROL  
 ALTERNATE RATING FOR PWM CONTROL 1.0SF 40C AMB  
 VT 0-60 HZ, CT 15-60 HZ, CHP --- HZ.

**Additional Information:**

2P - TS EXTN  
 PAINTED FRAME ID & SHAFT,  
 FAN COVER INSIDE & ODE E/S OUTSIDE  
 C FACE ON DE  
 346 CU IN - 3.00" NPT  
 INPRO SEAL BOTH ENDS  
 OIL RESISTANT SLEEVING ON LEADS  
 .0015" TIR SHAFT RUNOUT  
 ROUTINE TEST REPORT AND 5 POINT VIBRATION TEST  
 REPORT INCLUDED IN C/B  
 COPPER WASHER UNDER HEADS OF BEARING CAP BOLTS,  
 APPLY TITE-SEAL (A50CD427A) ON BEARING CAP SCREWS,  
 RABBETS AND PLUG THREADS.  
 ROUND FRAME

GROUND PAD  
VERTICAL MOUNT SHAFT DOWN WITH DRIP COVER  
TEFC XSD-841 ULTRA STOCK 10/20/2016  
ENGINEERED BY: BALASUBRAMANIANH/BILURP

**Performance Characteristics**

1st Winding 1st Connection

**Design: 36BD0118A**

**Marks:**

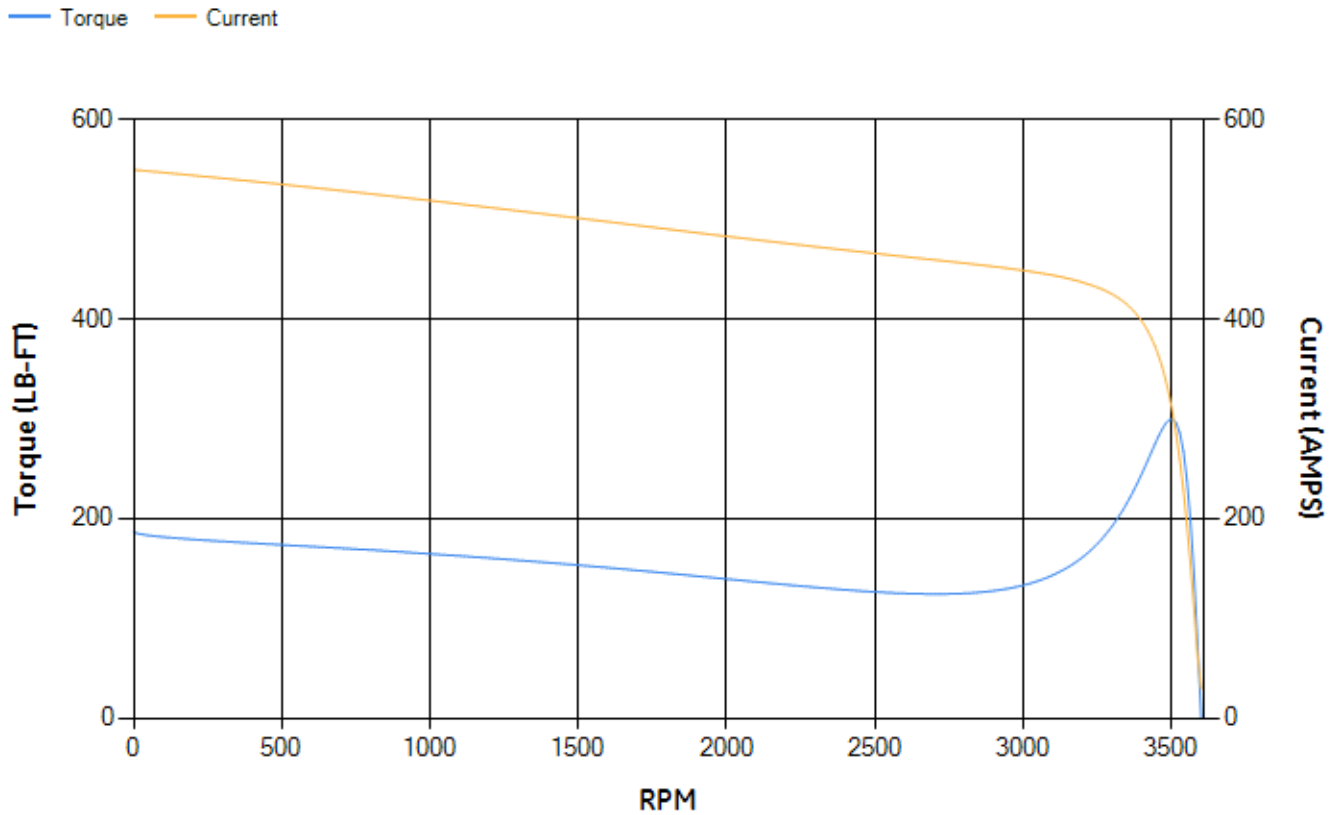
LOAD %	125.0	115.0	100.0	75.0	50.0	25.0	0.0
% EFF	94.48	94.68	95.12	95.07	94.57	91.73	0.00
% PF	87.92	87.61	86.72	83.41	75.17	53.6	4.53
AMPS	105.63	97.31	84.94	66.39	49.38	35.7	28.99

TORQ(FL)#FT	110.18	TORQ(LR)%FL	169.66	TORQ(BD)%FL	271.5
AMPS(LR)	549.47	PF AT START	0.33		

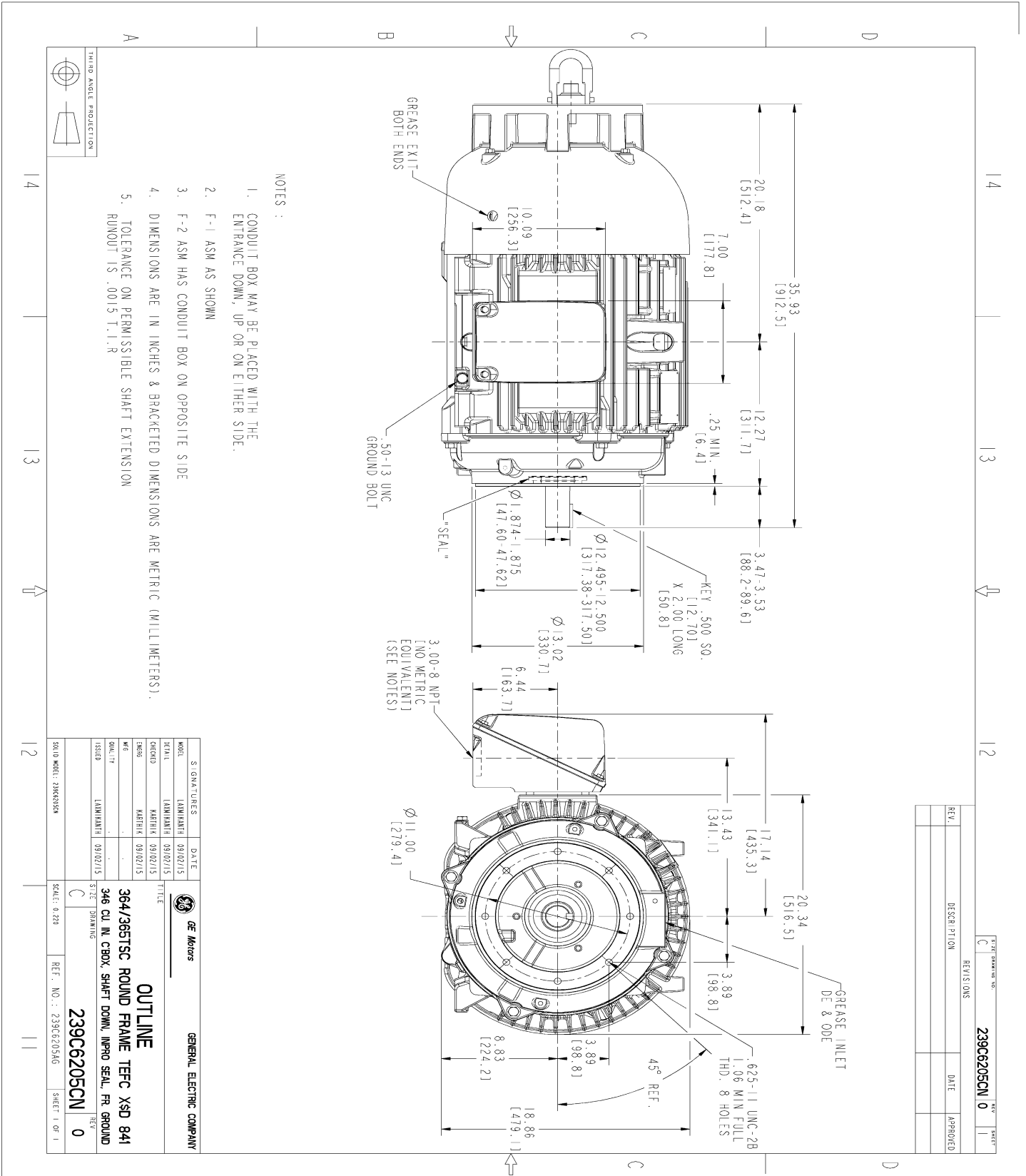
This motor is capable of two cold or one hot start with a maximum connected load inertia of 168 Lb-Ft Sq (7.07 Kg-meter Sq) at 100% voltage, where the load torque varies with the square of the speed. Acceleration time with maximum inertia and the above load type is 17 seconds. Safe stall time at 100% voltage is 40 seconds cold, 20 seconds hot. Rotor inertia is 9.07 Lb-Ft Sq (0.38 Kg-meter Sq).

Open Circuit A-C:	1.039	Short Circuit D-C:	0.022
Short Circuit A-C:	0.05	X/R Ratio:	8.401
Stator Slots:	48	Rotor Slots:	38

**Speed Torque Current Curve (First Connection, First Speed)**



Marks:



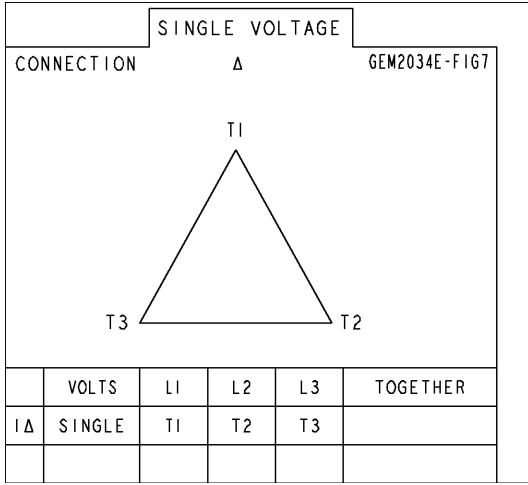
REV.	DESCRIPTION	DATE	APPROVED
0			

REV	SHEET
0	1

REV	SHEET
0	1

Marks:

**Connection Diagram**  
**GEM2034E-FIG7**



End shield Assembly		
Part Description	DE Side Part#	ODE Side Part#
End Shield	115E4253AG1	115E4250LW1
Bearing	235A2516AF01	235A2516AF01
Slinger/Inproseal	235A4575GS3	235A4575GS3

Fan & Fan Cover Assembly	
Part Description	Part#
Fan	159C6700G02
Fan Cover	128D6811AB1

Conduit & Accessories Box Assembly	
Part Description	Part#
Conduit Box	149C4429AA2

Mechanical Accessories	
Part Description	Part#
Brake	
Tachometer	