

# Product Information Packet

January 12, 2017

Data shown is for the current revision model #. Ensure your nameplate model # matches.

<b>Model Number:</b>	<b>5KS513SAA365A</b>
<b>Catalog Number:</b>	<b>Q5027</b>
<b>Instruction Manual:</b>	GEI-56128
<b>Connection Diagram:</b>	GEM2034E-FIG20
<b>Outline Drawing:</b>	239C6C00HC

Accessory Connection Diagrams			
<b>Bearing Thermocouple:</b>	None	<b>Heater:</b>	3027JE-1C
<b>RTD:</b>	None	<b>Thermistor:</b>	None
<b>Thermostat:</b>	None	<b>Winding Thermocouple:</b>	None
<b>Bearing RTD:</b>	None		

Table of Contents	
Specification	01
Performance Characteristics	02
Outline Drawing	03
Connection Drawing(s)	04

**Marks:**

<b>MODEL NUMBER:</b>	<b>5KS513SAA365A</b>	<b>Estimated Weight:</b>	7150 Lbs
<b>Outline Drawing:</b>	239C6C00HC	<b>Time Rating:</b>	CONT
<b>Connection Diagram:</b>	GEM2034E-FIG20	<b>Enclosure:</b>	TEFC
<b>Instruction Book:</b>	GEI-56128	<b>Encl Construction:</b>	SD
<b>Design Code:</b>	50BD3164A	<b>Ambient Max(°C):</b>	40
<b>Type:</b>	KS	<b>Alt Ambient Max(°C):</b>	--
<b>Frame:</b>	5013S	<b>Insulation Class:</b>	F
<b>Phases:</b>	3	<b>NEMA Design:</b>	--
<b>Poles:</b>	6	<b>Nominal Efficiency:</b>	95.8 %
<b>Output Power:</b>	700HP 518KW	<b>Guaranteed Efficiency:</b>	95.0
<b>RPM:</b>	1190	<b>3/4 Load Efficiency:</b>	96.5
<b>Voltage:</b>	460	<b>KVA Code:</b>	F
<b>Hertz:</b>	60	<b>Max KVAR:</b>	163.9
<b>Amps - FL:</b>	791.0	<b>Power Factor:</b>	86.5
<b>Service Factor:</b>	1.00	<b>Bearing - DE:</b>	6320ZC3
<b>Alt Service Factor:</b>	--	<b>Bearing - ODE:</b>	6320ZC3

**Enclosure is Totally Enclosed Fan-Cooled**

---

**Stamped Nameplate Notes:**

HTR LDS HE1-HE2 115V 350W  
 INVERTER DUTY PER NEMA MG1 PART 31  
 ALTERNATE RATING FOR PWM CONTROL:1.0SF 40C AMBIENT  
 VAR TORQUE RANGE 0-60 HZ  
 FOR DIRECT COUPLED LOAD ONLY

**Additional Information:**

6P - S EXTN - SPLIT LEAD  
 5700 CU IN - 3(3.00" NPT)  
 C/B GRD PLATE  
 115V HTR LDS TO AUX BOX OPP MAIN CONDUIT BOX  
 SPACE HEATER CAUTION NAMEPLATE  
 NEMA TYPE GRD PAD  
 F1 MOUNTING  
 PROVISION FOR BTD ON BOTH ENDS PLUGGED  
 CLASS F RISE AT 1.00SF

**Performance Characteristics**

1st Winding 1st Connection

**Design: 50BD3164A**

**Marks:**

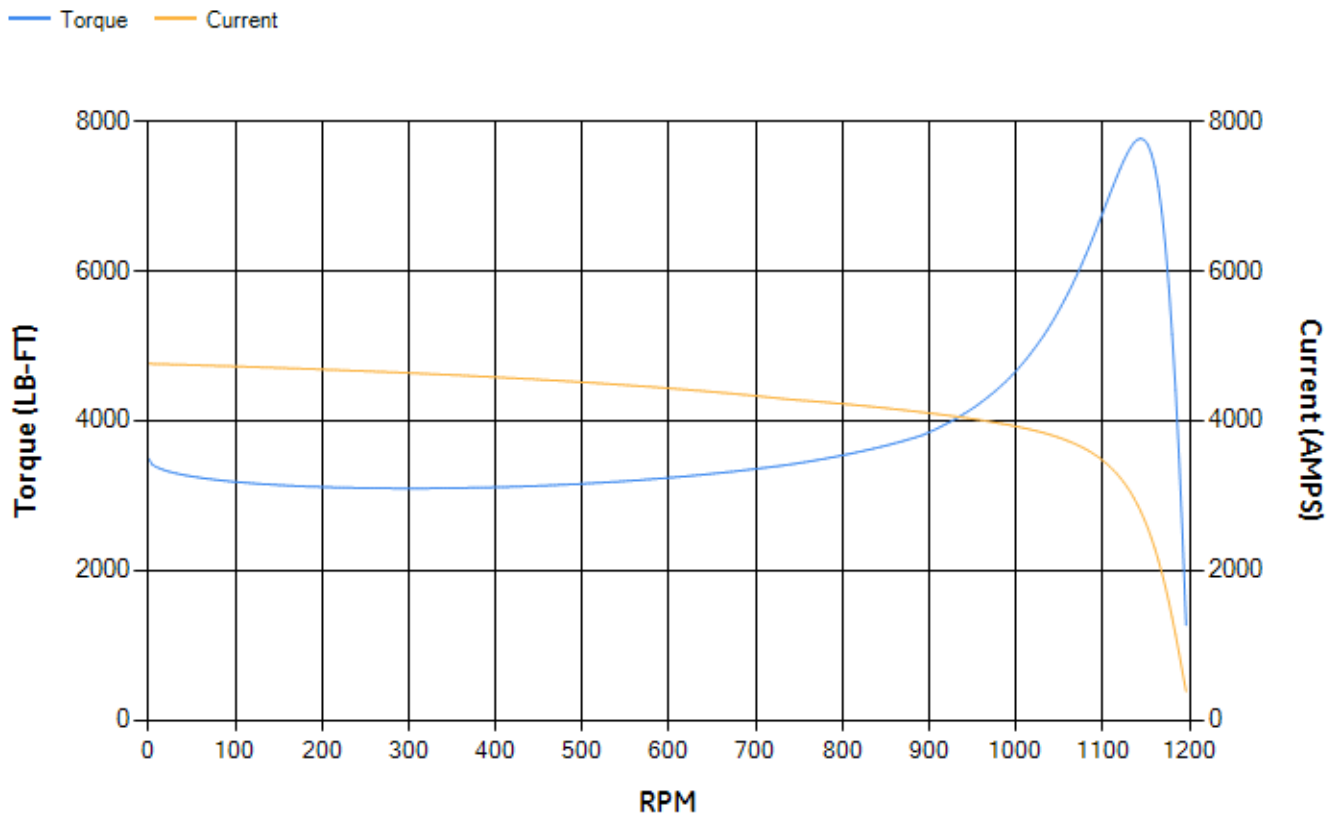
LOAD %	125.0	115.0	100.0	75.0	50.0	25.0	0.0
% EFF	95.31	95.61	96.2	96.49	96.63	95.58	0.00
% PF	86.73	86.85	86.59	84.49	77.92	57.76	2.61
AMPS	990.7	907.39	786.73	602.7	435.1	296.68	228.58

<b>TORQ(FL)#FT</b>	3094.66	<b>TORQ(LR)%FL</b>	112.76	<b>TORQ(BD)%FL</b>	250.53
<b>AMPS(LR)</b>	4761.04	<b>PF AT START</b>	0.22		

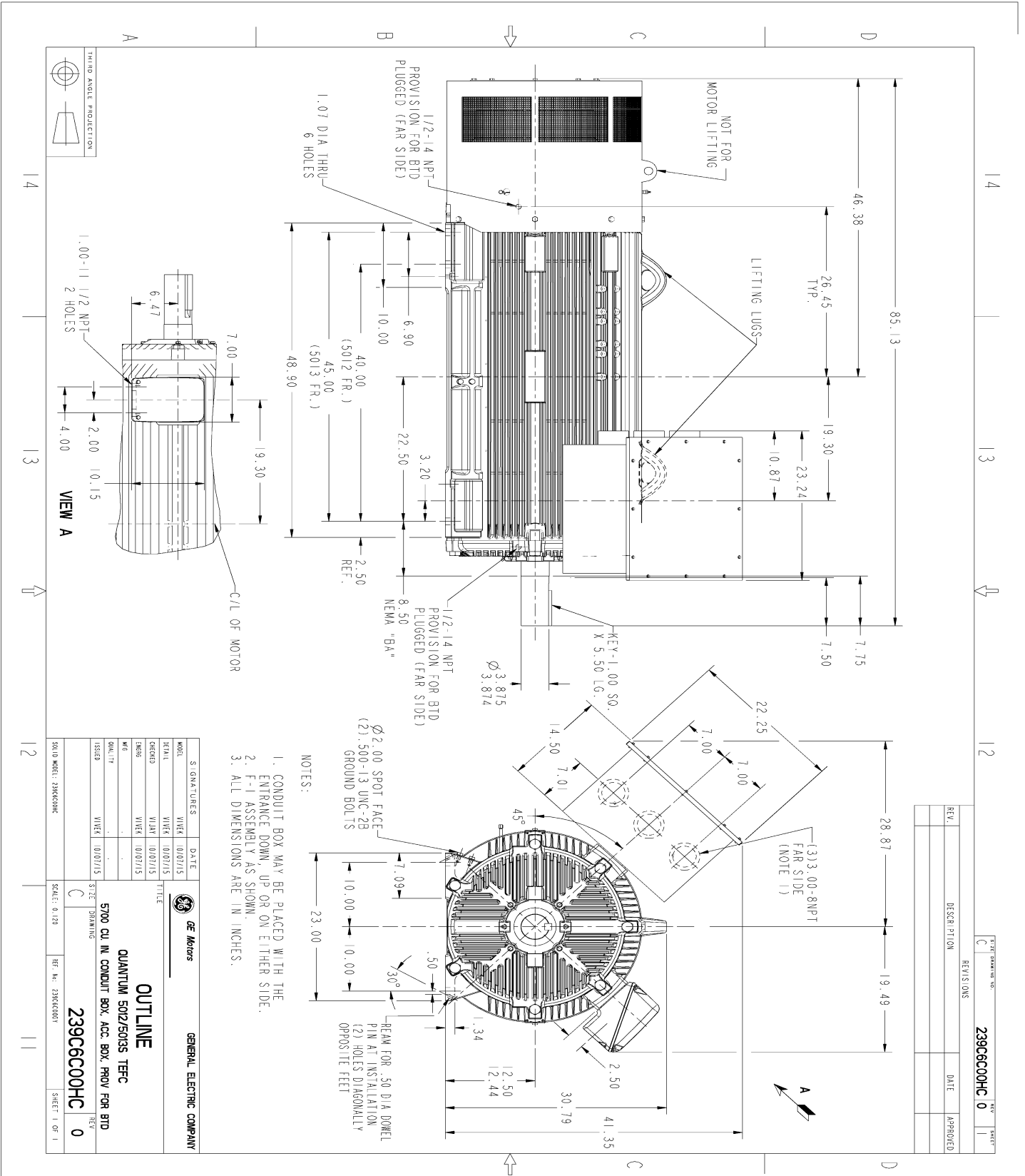
This motor is capable of two cold or one hot start with a maximum connected load inertia of 15215 Lb-Ft Sq (640.55 Kg-meter Sq)at 100% voltage, where the load torque varies with the square of the speed. Acceleration time with maximum inertia and the above load type is 22 seconds. Safe stall time at 100% voltage is 80 seconds cold, 35 seconds hot. Rotor inertia is 369.52 Lb-Ft Sq (15.56 Kg-meter Sq).

<b>Open Circuit A-C:</b>	0.881	<b>Short Circuit D-C:</b>	0.038
<b>Short Circuit A-C:</b>	0.04	<b>X/R Ratio:</b>	14.234
<b>Stator Slots:</b>	72	<b>Rotor Slots:</b>	58

**Speed Torque Current Curve (First Connection, First Speed)**



Marks:



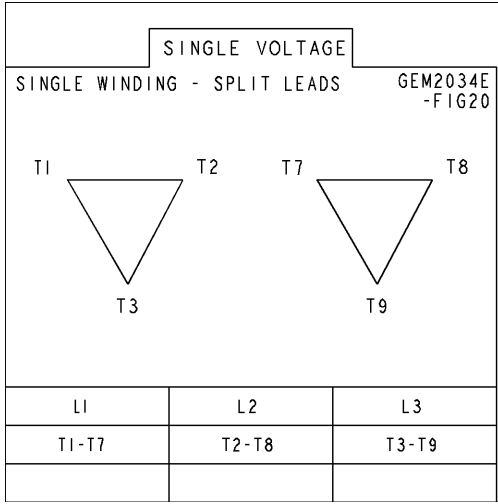
- NOTES:
1. CONDUIT BOX MAY BE PLACED WITH THE ENTRANCE DOWN, UP OR ON EITHER SIDE.
  2. F-I ASSEMBLY AS SHOWN.
  3. ALL DIMENSIONS ARE IN INCHES.

REV.	DESCRIPTION	DATE	APPROVED

MODEL	SIGNATURES	DATE	<p><b>GENERAL ELECTRIC COMPANY</b></p> <p><b>OUTLINE</b></p> <p><b>QUANTUM 5012/5013 TFC</b></p> <p><b>5700 CU IN CONDUIT BOX, ACC. BOX, PROV FOR BTID</b></p> <p><b>239C6C00HC</b></p>
SERIAL	VIEW	VIEW	
ORDER	VIEW	VIEW	
DESIGN	VIEW	VIEW	
QUALITY	VIEW	VIEW	
ISSUED	VIEW	VIEW	<p>SCALE: 0.125</p> <p>REF. NO. 239C6C00G1</p> <p>SHEET 1 OF 1</p>

Marks:

**Connection Diagram**  
GEM2034E-FIG20



**Heater Connection**  
3027JE-1C

