

Product Information Packet

November 8, 2016

Data shown is for the current revision model #. Ensure your nameplate model # matches.

Model Number:	5KS449LAA307B
Catalog Number:	M7672
Instruction Manual:	GEI-56128
Connection Diagram:	GEM2034E-FIG8
Outline Drawing:	239CC800AG

Accessory Connection Diagrams			
Bearing Thermocouple:	None	Heater:	None
RTD:	None	Thermistor:	None
Thermostat:	None	Winding Thermocouple:	None
Bearing RTD:	None		

Table of Contents	
Specification	01
Performance Characteristics	02
Outline Drawing	03
Connection Drawing(s)	04



Marks:

MODEL NUMBER:	5KS449LAA307B	Estimated Weight:	2940 Lbs
Outline Drawing:	239CC800AG	Time Rating:	CONT
Connection Diagram:	GEM2034E-FIG8	Enclosure:	TEFC
Instruction Book:	GEI-56128	Encl Construction:	SD
Design Code:	49BD3090A	Ambient Max(°C):	40
Type:	KS	Alt Ambient Max(°C):	--
Frame:	449T	Insulation Class:	F
Phases:	3	NEMA Design:	A
Poles:	6	Nominal Efficiency:	95.8 %
Output Power:	250HP 185KW	Guaranteed Efficiency:	95.0
RPM:	1195	3/4 Load Efficiency:	96.1
Voltage:	460	KVA Code:	J
Hertz:	60	Max KVAR:	93.6
Amps - FL:	300.0	Power Factor:	81.5
Service Factor:	1.15	Bearing - DE:	6318ZC3S0
Alt Service Factor:	--	Bearing - ODE:	6318ZC3S0

Enclosure is Totally Enclosed Fan-Cooled

Stamped Nameplate Notes:

FOR DIRECT COUPLED LOAD ONLY
 INVERTER DUTY PER NEMA MG1 PART 31
 ALTERNATE RATING FOR PWM CONTROL:1.0SF 40C AMBIENT
 VAR TORQUE RANGE 0-60 HZ

Additional Information:

6P - T EXTN - SPLIT LEAD
 1260 CU IN - 2(4.00" NPT)
 C/B GRD PLATE
 OIL RESISTANT SLEEVING ON LEADS
 F1 MOUNTING
 VIBRATION LIMIT 0.15 INCH PER SEC

Performance Characteristics

1st Winding 1st Connection

Design: 49BD3090A

Marks:

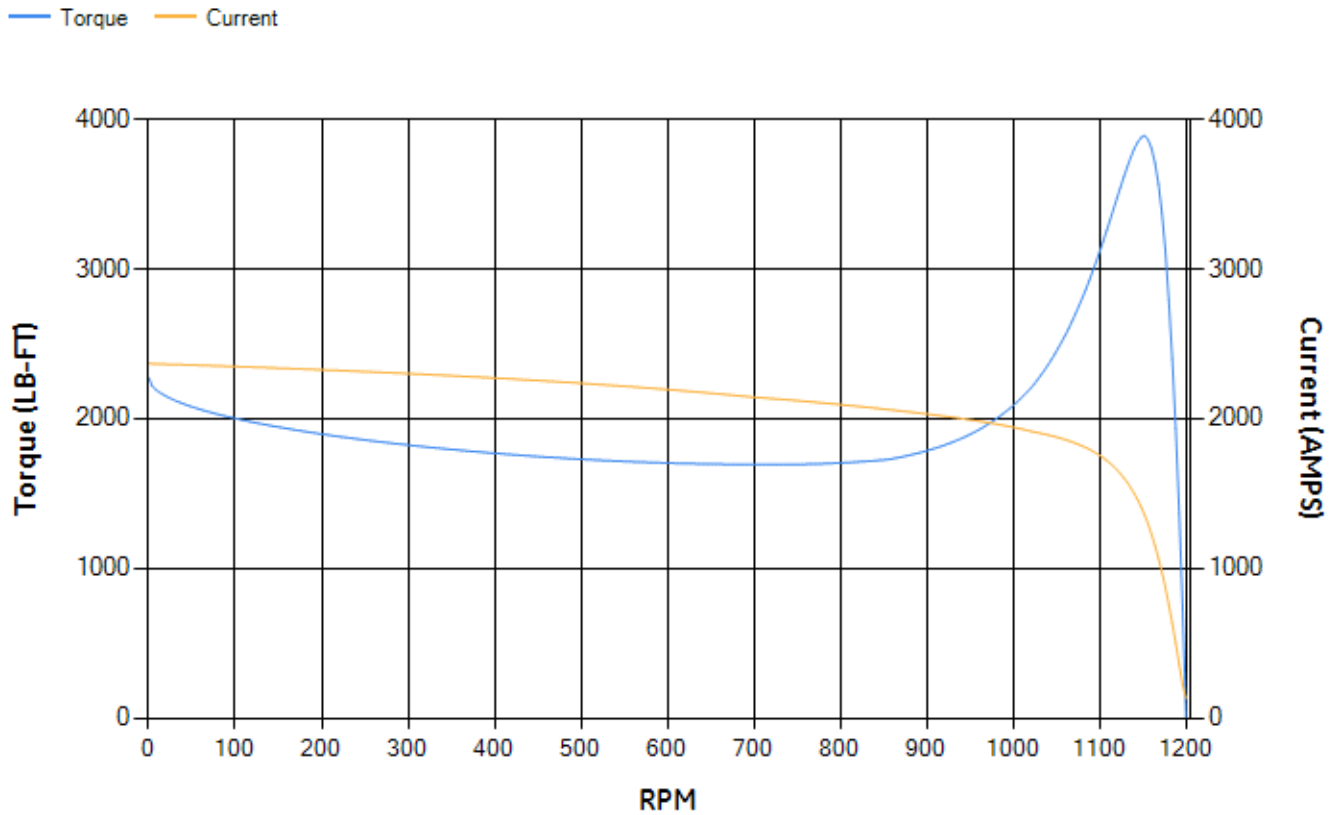
LOAD %	125.0	115.0	100.0	75.0	50.0	25.0	0.0
% EFF	95.49	95.68	96.12	96.13	95.88	93.92	0.00
% PF	84.18	83.38	81.62	76.26	65.15	42.13	2.41
AMPS	363.85	337.27	298.29	239.37	187.3	147.83	130.18

TORQ(FL)#FT	1100.54	TORQ(LR)%FL	206.6	TORQ(BD)%FL	352.94
AMPS(LR)	2367.58	PF AT START	0.29		

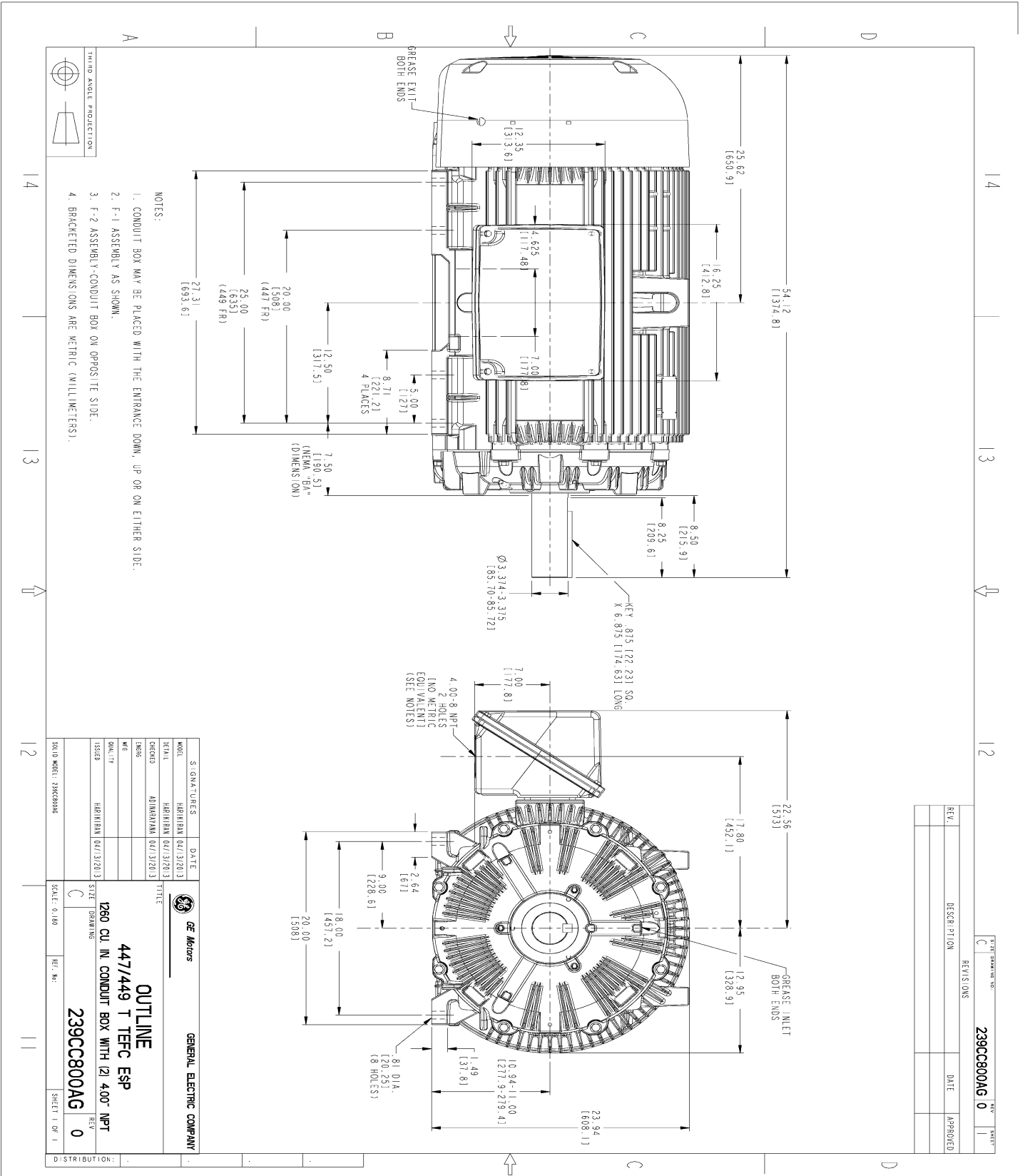
This motor is capable of two cold or one hot start with a maximum connected load inertia of 10057 Lb-Ft Sq (423.4 Kg-meter Sq)at 100% voltage, where the load torque varies with the square of the speed. Acceleration time with maximum inertia and the above load type is 25 seconds. Safe stall time at 100% voltage is 78 seconds cold, 39 seconds hot. Rotor inertia is 177.16 Lb-Ft Sq (7.46 Kg-meter Sq).

Open Circuit A-C:	0.916	Short Circuit D-C:	0.024
Short Circuit A-C:	0.046	X/R Ratio:	9.037
Stator Slots:	72	Rotor Slots:	58

Speed Torque Current Curve (First Connection, First Speed)

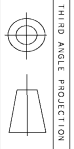


Marks:



NOTES:

1. CONDUIT BOX MAY BE PLACED WITH THE ENTRANCE DOWN, UP OR ON EITHER SIDE.
2. F-1 ASSEMBLY AS SHOWN.
3. F-2 ASSEMBLY-CONDUIT BOX ON OPPOSITE SIDE.
4. BRACKETED DIMENSIONS ARE METRIC (MILLIMETERS).



THIRD ANGLE PROJECTION

REV.	DESCRIPTION	DATE	APPROVED

MODEL	SIGNATURES	DATE	<p>GENERAL ELECTRIC COMPANY</p> <p>OUTLINE</p> <p>447/449 T TEFC ESP</p> <p>1260 CU IN CONDUIT BOX WITH 121 400" NPT</p> <p>239CC800AG</p>
SCALE	HARRIMAN (04/13/2013)		
DESIGN	HARRIMAN (04/13/2013)		
ISSUED	HARRIMAN (04/13/2013)		
SCALE: 0.180	REF. NO.		
DISTRIBUTION:			

Marks:

Connection Diagram
GEM2034E-FIG8

