

# Product Information Packet

May 26, 2017

Data shown is for the current revision model #. Ensure your nameplate model # matches.

<b>Model Number:</b>	<b>5KAF326SAA322A</b>
<b>Catalog Number:</b>	<b>M9329</b>
<b>Instruction Manual:</b>	GEI-56128
<b>Connection Diagram:</b>	GEM2034E-FIG9
<b>Outline Drawing:</b>	239C5000AA

Accessory Connection Diagrams			
<b>Bearing Thermocouple:</b>	None	<b>Heater:</b>	None
<b>RTD:</b>	None	<b>Thermistor:</b>	None
<b>Thermostat:</b>	3027JE-2A	<b>Winding Thermocouple:</b>	None
<b>Bearing RTD:</b>	None		

Table of Contents	
Specification	01
Performance Characteristics	02
Outline Drawing	03
Connection Drawing(s)	04

**Marks:**

<b>MODEL NUMBER:</b>	<b>5KAF326SAA322A</b>	<b>Service Factor:</b>	1.00
<b>Outline Drawing:</b>	239C5000AA	<b>Alt Service Factor:</b>	--
<b>Connection Diagram:</b>	GEM2034E-FIG9	<b>ASD Type:</b>	PWM
<b>Instruction Book:</b>	GEI-56128	<b>Time Rating:</b>	CONT
<b>Design Code:</b>	32BD3090A	<b>Enclosure:</b>	TEFC
<b>Type:</b>	KAF	<b>Encl Construction:</b>	A\$D
<b>Frame:</b>	326T	<b>Ambient Max (°C):</b>	40
<b>Phases:</b>	3	<b>Alt Ambient Max(°C):</b>	--
<b>Poles:</b>	6	<b>Insulation Class:</b>	H
<b>Output Power:</b>	30HP 22.2KW	<b>NEMA Design:</b>	-
<b>Output Power (2):</b>	30HP 22.2KW	<b>Nominal Efficiency:</b>	93.0 %
<b>Output Power (3):</b>	0HP 0KW	<b>Guaranteed Efficiency:</b>	91.7 %
<b>RPM:</b>	1775	<b>3/4 Load Efficiency:</b>	93.2 %
<b>RPM (2):</b>	1185	<b>KVA Code:</b>	H
<b>RPM (3):</b>	0	<b>Max KVAR:</b>	14.9
<b>Voltage:</b>	230/460	<b>Power Factor:</b>	75.0
<b>Voltage (2):</b>	230/460	<b>Service Factor SINE:</b>	1
<b>Voltage (3):</b>	7.5/15	<b>Service Factor ASD:</b>	1
<b>Hertz:</b>	90.0	<b>Min Supply Wires:</b>	75 C
<b>Hertz – 2:</b>	60	<b>IP:</b>	55
<b>Hertz – 3:</b>	0.8	<b>Vibration Limit:</b>	0.04 mm/s
<b>Amps – FL:</b>	72/36	<b>Bearing Lubrication:</b>	NULL
<b>Amps – FL- 2:</b>	80.6/40.3	<b>Bearing - DE:</b>	6312ZC3
<b>Amps - FL- 3:</b>	80.6/40.3	<b>Bearing - ODE:</b>	6312ZC3
<b>Speed Range RPM:</b>	1-1185	<b>Estimated Weight:</b>	660 Lbs
<b>Const HP RPM:</b>	1185-1775		

**Enclosure is Totally Enclosed Fan-Cooled**

**Stamped Nameplate Notes:**

ALTERNATE RATING FOR PWM CONTROL: 1.0SF 40C AMB  
 INVERTER DUTY CONSTANT TORQUE RANGE: 0-60HZ  
 THERMOSTAT LEADS TB1-TB2 TRIP  
 IP 55  
 CLASS H INS WITH CLASS F RISE AT 1.00 SF,  
 INVERTER DUTY PER NEMA MG1 PART31 WITH PWM CONTROL

**Additional Information:**

6P - T EXTN  
 346 CU IN - 3.00" NPT  
 E/S GROUND BOLT MTD ON DE C/BOX SIDE NEAR FOOT  
 OIL RESISTANT SLEEVING ON LEADS  
 TACH PROVISION MOTOR  
 N.C. TRIP TSTAT LDS TO MAIN CONDUIT BOX

F1 MOUNTING  
PAINTED ODE ACCESSORY RABBET  
SHAFT GROUNDING RING MOUNTED ON DE BRG CAP

**Performance Characteristics**

1st Winding 1st Connection

**Design: 32BD3090A**

**Marks:**

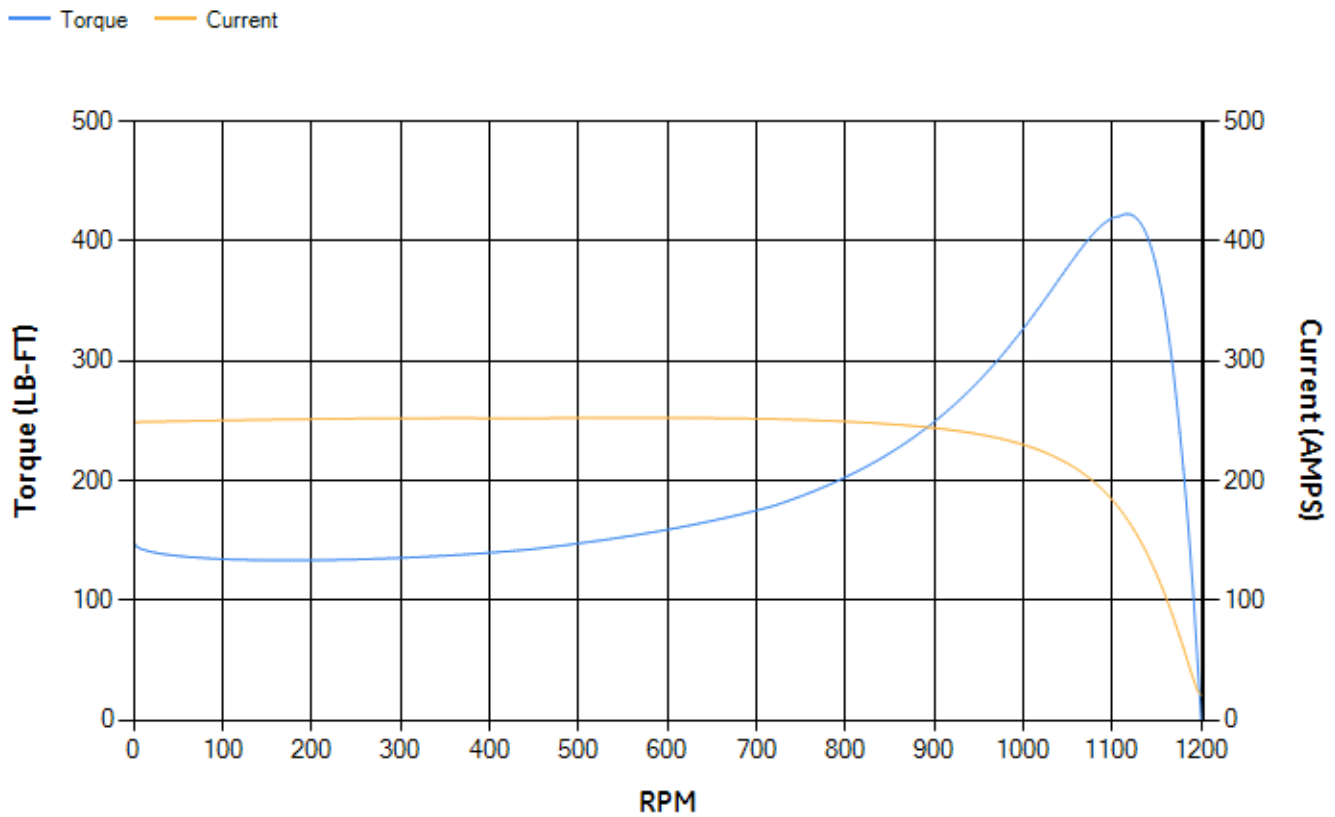
LOAD %	125.0	115.0	100.0	75.0	50.0	25.0	0.0
% EFF	92.43	92.72	93.24	93.21	92.47	88.53	0.00
% PF	78.74	77.61	75.22	68.54	56.28	34.95	3.69
AMPS	48.22	44.87	40.01	32.96	26.98	22.68	20.72

<b>TORQ(FL)#FT</b>	133.02	<b>TORQ(LR)%FL</b>	111.62	<b>TORQ(BD)%FL</b>	315.11
<b>AMPS(LR)</b>	248.75	<b>PF AT START</b>	0.26		

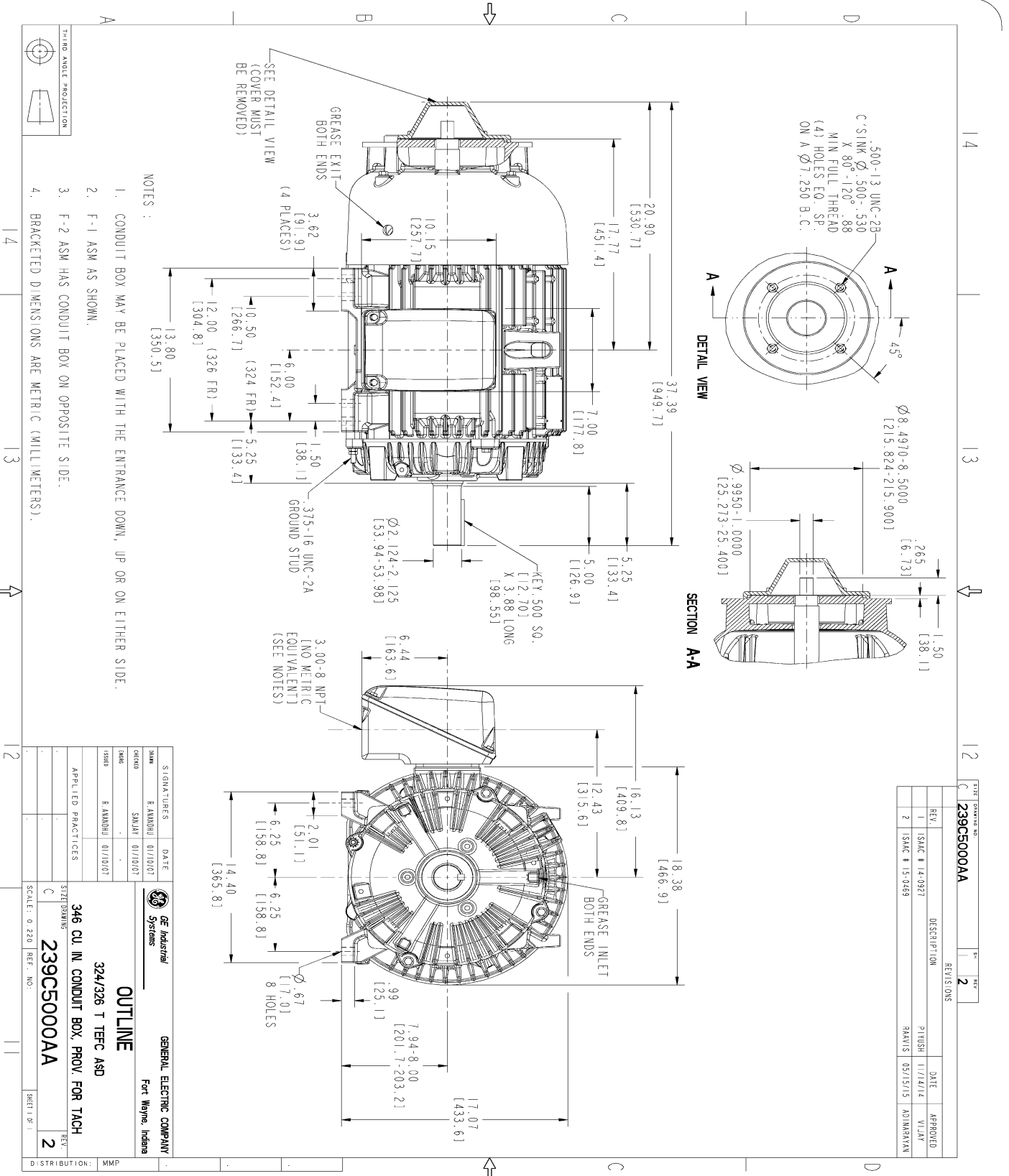
This motor is capable of two cold or one hot start with a maximum connected load inertia of 2230 Lb-Ft Sq (93.88 Kg-meter Sq)at 100% voltage, where the load torque varies with the square of the speed. Acceleration time with maximum inertia and the above load type is 56 seconds. Safe stall time at 100% voltage is 142 seconds cold, 82 seconds hot. Rotor inertia is 8.96 Lb-Ft Sq (0.38 Kg-meter Sq).

<b>Open Circuit A-C:</b>	0.346	<b>Short Circuit D-C:</b>	0.016
<b>Short Circuit A-C:</b>	0.024	<b>X/R Ratio:</b>	6.039
<b>Stator Slots:</b>	54	<b>Rotor Slots:</b>	40

**Speed Torque Current Curve (First Connection, First Speed)**



Marks:



REV.	DESCRIPTION	DATE	APPROVED
1	ISMIC # 14-0927	11/14/14	VILAY
2	ISMIC # 15-0469	05/15/15	ADINARAYAN

SIGNATURES	DATE	GENERAL ELECTRIC COMPANY
SAW R. ANANDU	01/10/07	Fort Wayne, Indiana
DRG S. SAIJAY	01/10/07	
ESD R. ANANDU	01/10/07	

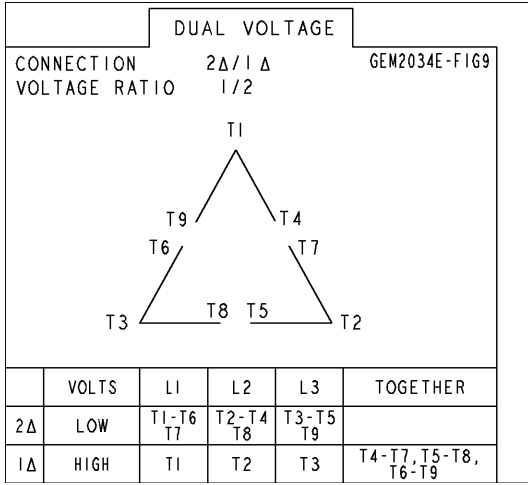
**346 CU IN CONDUIT BOX, PROV. FOR TACH.**

**239C5000AA**

SCALE: 0.220 REF. NO. SHEET 1 OF 2

Marks:

**Connection Diagram**  
**GEM2034E-FIG9**



**Thermostat Connection**  
**3027JE-2A**

