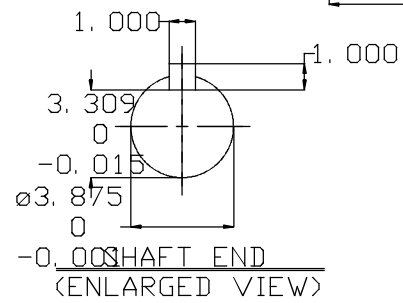
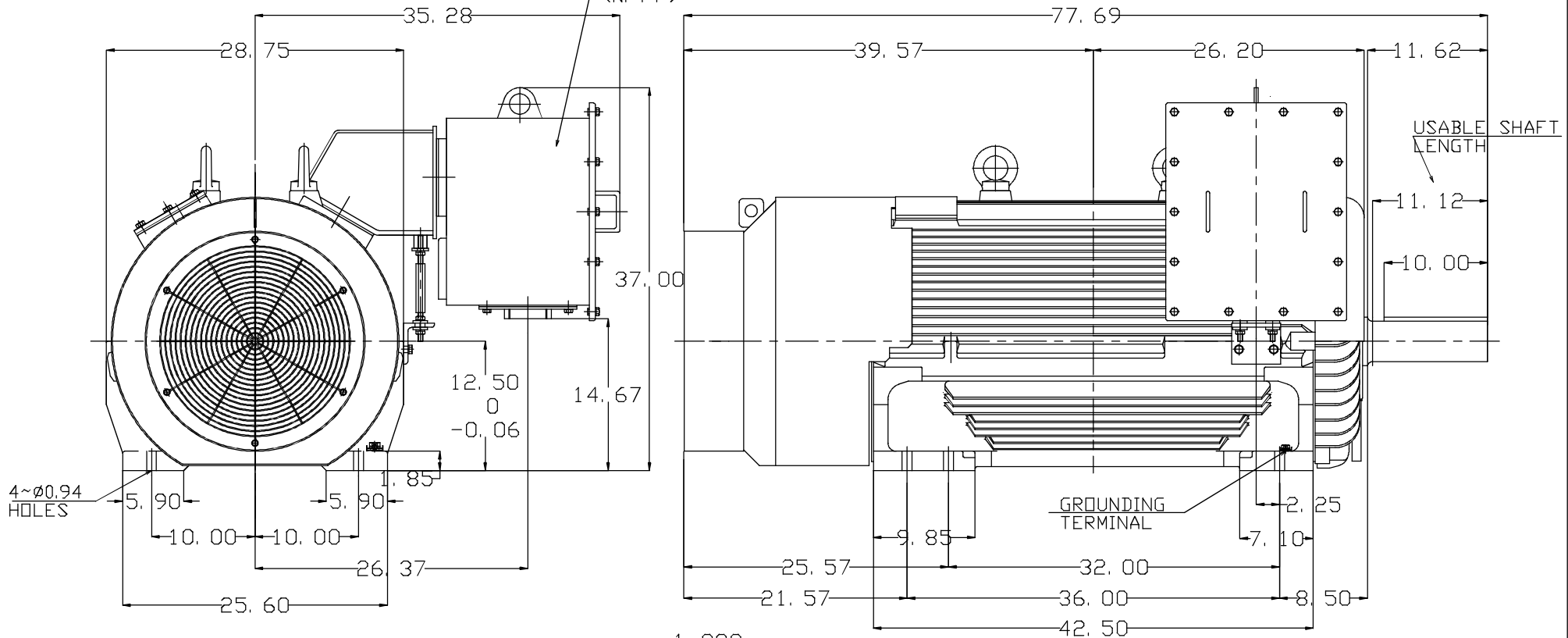


6 5 4 3 2 1

TYPE	OUTPUT		POLE	TIME RATING	VOLTAGE V	Hz	SYN.SPEED R.P.M
	HP.	kW.					
AEHE	350	261	8	CONT.	460	60	900

TOTALLY ENCLOSED FAN-COOLED TYPE, SQUIRREL-CAGE ROTOR

PRIMARY T-BOX
(NPT4")



- NOTE:
1. DIMENSIONS IN inch
 2. FRAME NO. 5011C(5010C)
 3. F CLASS INSULATION, S.F.1.15
 4. FOR BELT DRIVE APPLICATIONS
 5. ENCLOSURE: IP55
 6. BEARING SIZE: DRIVE-END NU324
OPP. DRIVE-END 6320
 7. MOTOR APPROX. WEIGHT: 4800 lb

DATE	OUTLINE DIMENSIONS	
CATALOG # E3508R	3-PHASE INDUCTION MOTOR	
DWN. Y.DU MAR-20-2014	DWG NO. REV:00	
CHKD. W.CHENG MAR-29-2014	4B040C017	
APPD. C.SHIH MAR-29-2014	TECO Westinghouse	