

Product Information Packet

January 12, 2017

Data shown is for the current revision model #. Ensure your nameplate model # matches.

Model Number:	5KS513SAA176A
Catalog Number:	Q566
Instruction Manual:	GEI-56128
Connection Diagram:	GEM2034E-FIG20
Outline Drawing:	239C6C00HJ

Accessory Connection Diagrams			
Bearing Thermocouple:	None	Heater:	3027JE-1C
RTD:	None	Thermistor:	None
Thermostat:	None	Winding Thermocouple:	None
Bearing RTD:	235A3027NA		

Table of Contents	
Specification	01
Performance Characteristics	02
Outline Drawing	03
Connection Drawing(s)	04

Marks:

MODEL NUMBER:	5KS513SAA176A	Estimated Weight:	6917 Lbs
Outline Drawing:	239C6C00HJ	Time Rating:	CONT
Connection Diagram:	GEM2034E-FIG20	Enclosure:	TEFC
Instruction Book:	GEI-56128	Encl Construction:	SD
Design Code:	50BD0169B	Ambient Max(°C):	40
Type:	KS	Alt Ambient Max(°C):	--
Frame:	5013ST	Insulation Class:	F
Phases:	3	NEMA Design:	--
Poles:	2	Nominal Efficiency:	96.2 %
Output Power:	700HP 518KW	Guaranteed Efficiency:	95.4
RPM:	3570	3/4 Load Efficiency:	96.8
Voltage:	575	KVA Code:	H
Hertz:	60	Max KVAR:	77.3
Amps - FL:	574.0	Power Factor:	95.0
Service Factor:	1.15	Bearing - DE:	6315ZC3
Alt Service Factor:	--	Bearing - ODE:	6315ZC3

Enclosure is Totally Enclosed Fan-Cooled

Stamped Nameplate Notes:

HTR LDS HE1-HE2 115V 350W
 ROT CCW FACING ODE LEAD/PH SEQUENCE 3-2-1/1-2-3
 INVERTER DUTY PER NEMA MG1 PART 31
 ALTERNATE RATING FOR PWM CONTROL:1.0SF 40C AMBIENT
 VAR TORQUE RANGE 0-60 HZ
 FOR DIRECT COUPLED LOAD ONLY

Additional Information:

2P - ST EXTN - SPLIT LEAD
 2500 CU IN - 2(4.00" NPT)
 C/B GRD PLATE
 115V HTR LDS TO AUX BOX OPP MAIN CONDUIT BOX
 SPACE HEATER CAUTION NAMEPLATE
 BEARING RTD PROVISION ON BOTH ENDS PLUGGED
 NEMA TYPE GRD PAD
 F1 MOUNTING

Performance Characteristics

1st Winding 1st Connection

Design: 50BD0169B

Marks:

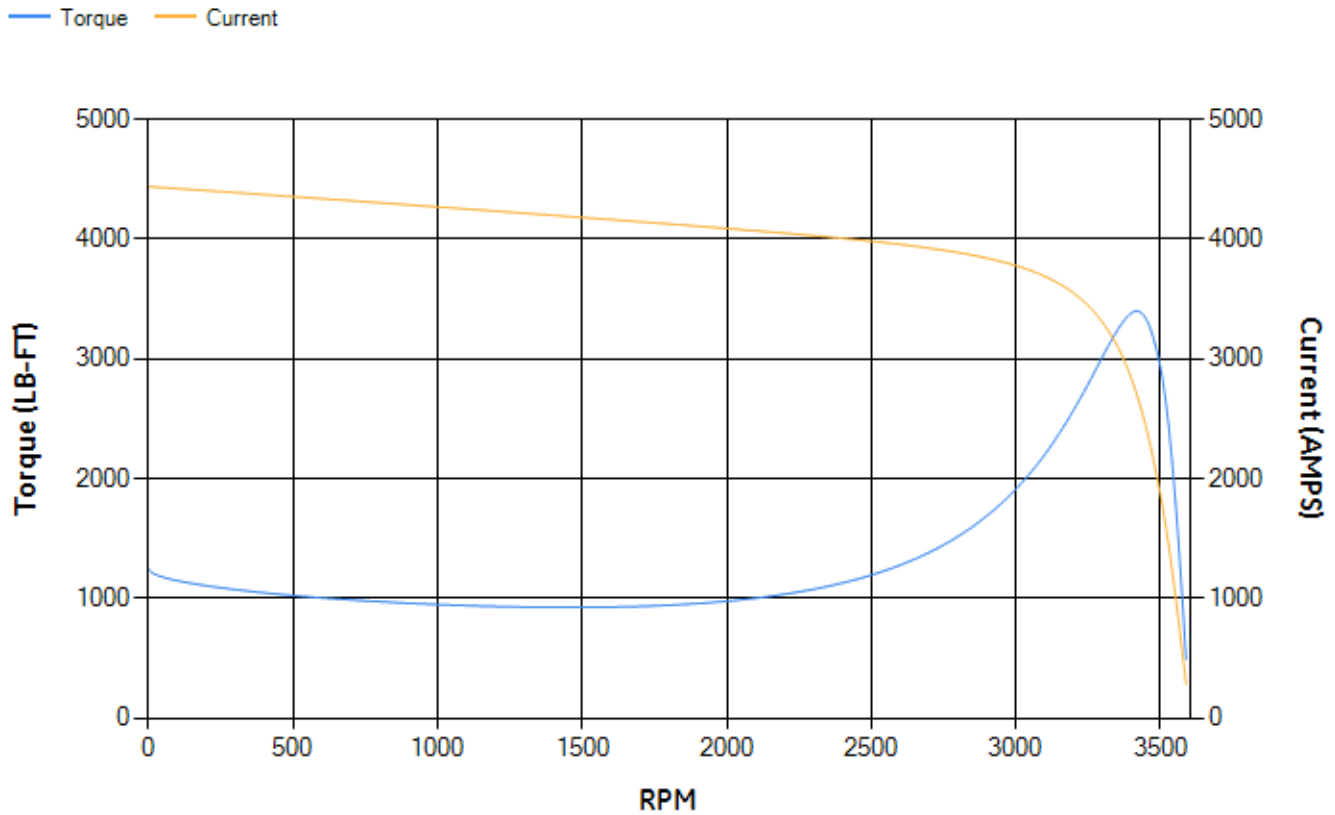
LOAD %	125.0	115.0	100.0	75.0	50.0	25.0	0.0
% EFF	96.15	96.32	96.74	96.77	96.63	95.15	0.00
% PF	94.66	94.82	94.93	94.53	92.42	82.48	6.28
AMPS	719.83	659.91	570	429.73	293.43	166.96	86.2

TORQ(FL)#FT	1028.9	TORQ(LR)%FL	120.96	TORQ(BD)%FL	329.89
AMPS(LR)	4438.69	PF AT START	0.17		

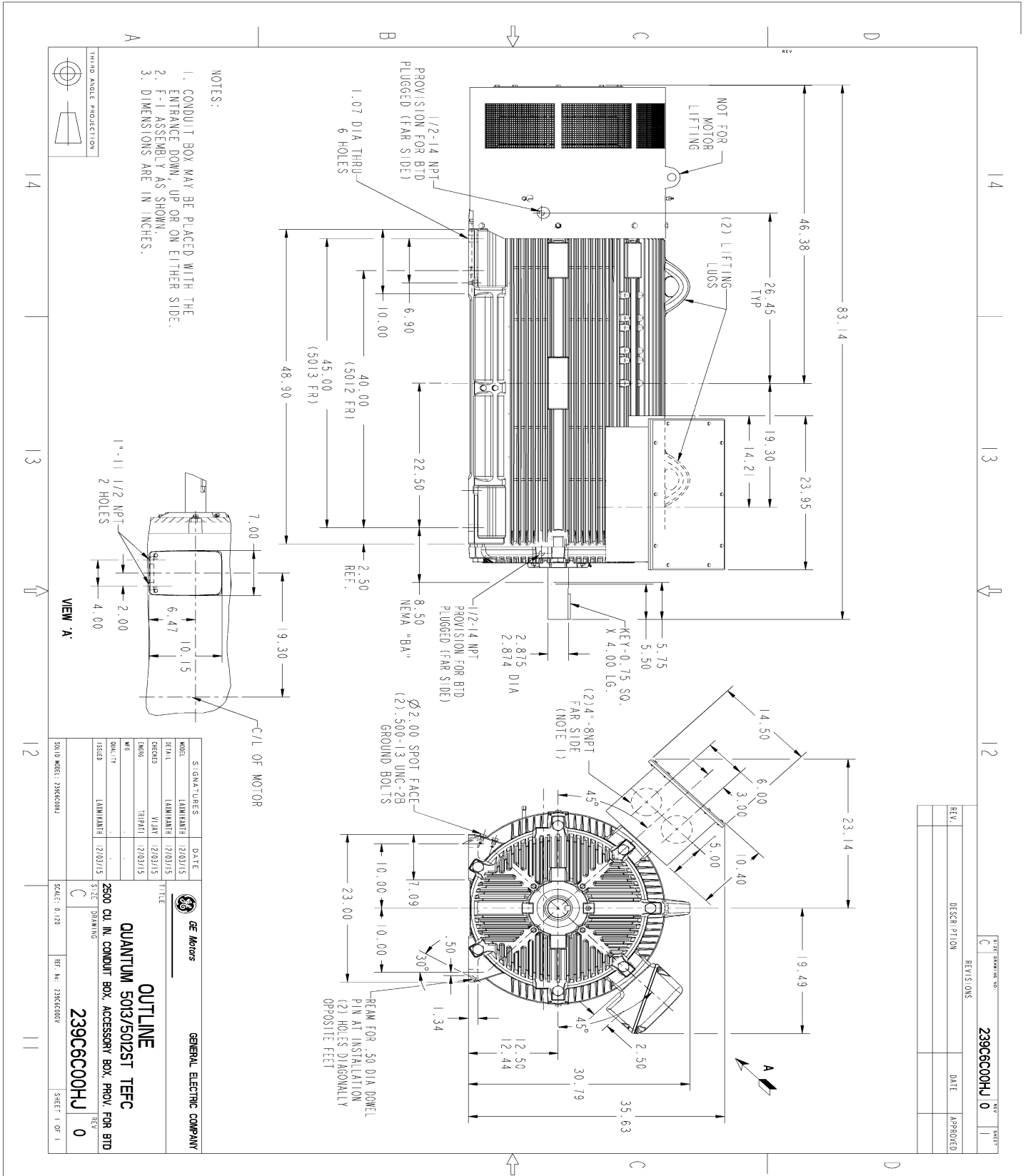
This motor is capable of two cold or one hot start with a maximum connected load inertia of 1449 Lb-Ft Sq (61 Kg-meter Sq) at 100% voltage, where the load torque varies with the square of the speed. Acceleration time with maximum inertia and the above load type is 19 seconds. Safe stall time at 100% voltage is 40 seconds cold, 23 seconds hot. Rotor inertia is 158.26 Lb-Ft Sq (6.66 Kg-meter Sq).

Open Circuit A-C:	2.269	Short Circuit D-C:	0.045
Short Circuit A-C:	0.047	X/R Ratio:	16.859
Stator Slots:	48	Rotor Slots:	40

Speed Torque Current Curve (First Connection, First Speed)

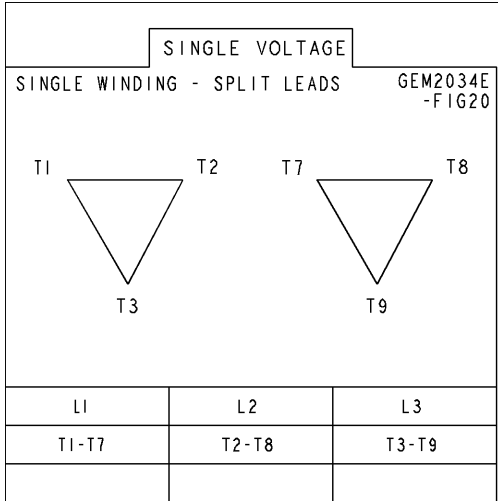


Marks:



Marks:

Connection Diagram
GEM2034E-FIG20



Heater Connection
3027JE-1C



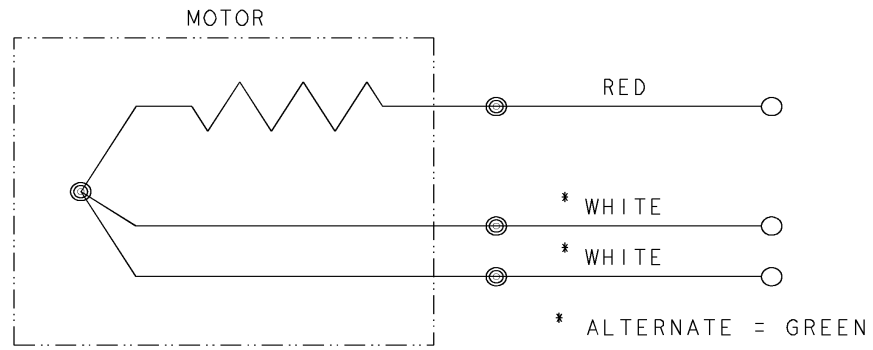


REV SH 1 1	THIRD ANGLE PROJECTION		REVISIONS		
		REV	DESCRIPTION	DATE	APPROVED
		1	ISAAC #12-1124	HARI	11/19/12

DWG NO 235A3027NA
 SIZE A

CONFIDENTIAL AND PROPRIETARY
 This document is the property of General Electric Company and contains proprietary and confidential information of the Motor Business Group (MBG). The document is loaned on the express conditions that neither it nor the information contained therein shall be disclosed to others without the express consent of MBG and that the information shall be used by the recipient only as approved expressly by MBG. Also, the document shall be returned to MBG upon its request.

BEARING RTDS



UNLESS OTHERWISE SPECIFIED DIMENSIONS ARE IN INCHES TOLERANCES ON: 2 PL DECIMALS ± 3 PL DECIMALS ± ANGLES ± FRACTIONS ± MATERIAL: APPLIED PRACTICES:	SIGNATURES	DATE	GE Motors Fort Wayne, Indiana	
	DRAWN D.E. BAIR	12/16/92		
	CHECKED D.E. BAIR	12/16/92		
	ENGRG K. DESAI	12/16/92		
	ISSUED D.E. BAIR	12/16/92	CONNECTION DIAGRAM BEARING RTDS	
	CAD NO. F500:235A3027NA	SIZE A	FSCM NO	DWG NO 235A3027NA
		SCALE 1/1		SHEET 1 OF 1

DISTR TO

