

Product Information Packet

January 13, 2017

Data shown is for the current revision model #. Ensure your nameplate model # matches.

Model Number:	5KS286SAE222A
Catalog Number:	V987
Instruction Manual:	GEK-95655
Connection Diagram:	GEM2034E-FIG9
Outline Drawing:	4002B5828PLP5210

Accessory Connection Diagrams

Bearing Thermocouple:	None	Heater:	3027JE-1
RTD:	None	Thermistor:	None
Thermostat:	None	Winding Thermocouple:	None
Bearing RTD:	None		

Table of Contents

Specification	01
Performance Characteristics	02
Outline Drawing	03
Connection Drawing(s)	04



Marks:

MODEL NUMBER:	5KS286SAE222A	Estimated Weight:	510 Lbs
Outline Drawing:	4002B5828PLP5210	Time Rating:	CONT
Connection Diagram:	GEM2034E-FIG9	Enclosure:	TEFC
Instruction Book:	GEK-95655	Encl Construction:	SD
Design Code:	28BD1157A	Ambient Max(°C):	40
Type:	KS	Alt Ambient Max(°C):	--
Frame:	L286HP10	Insulation Class:	H
Phases:	3	NEMA Design:	B
Poles:	4	Nominal Efficiency:	93.6 %
Output Power:	30HP 22.2KW	Guaranteed Efficiency:	92.4
RPM:	1775	3/4 Load Efficiency:	94.1
Voltage:	230/460	KVA Code:	G
Hertz:	60	Max KVAR:	8.2
Amps - FL:	69.8/34.9	Power Factor:	86.0
Service Factor:	1.15	Bearing - DE:	6310ZC3
Alt Service Factor:	--	Bearing - ODE:	6310-2ZC3

Enclosure is Totally Enclosed Fan-Cooled

Stamped Nameplate Notes:

PREMIUM EFFICIENT MOTOR
HTR LDS H 115V 60W
SEVERE DUTY
INVERTER DUTY PER NEMA MG1 PART 31
ALTERNATE RATING FOR PWM CONTROL:
1.0 SF VAR TORQUE RANGE 0-60 HZ
IP 55
SUITABLE FOR 190/380V 50 HZ WITH
83.6/41.8 AMPS AND 1465 RPM AT 1.0 S.F

Additional Information:

4P - HP EXTN
C/BOX 137 CU IN-1.50 NPT
AUX LEADS EXIT WITH MOTOR LEADS
RCF 5000 CPM, STATIC DEFLECTION .0014 INCHES &
CENTER OF GRAVITY 12.00 INCHES
SOLID SHAFT NORMAL THRUST
OIL RESISTANT SLEEVING ON LEADS
BEARING LIFE 8760 HOURS AT 968 LB THRUST
SLINGER ON BOTH ENDS AND SS T DRAIN

Performance Characteristics

1st Winding 1st Connection

Design: 28BD1157A

Marks:

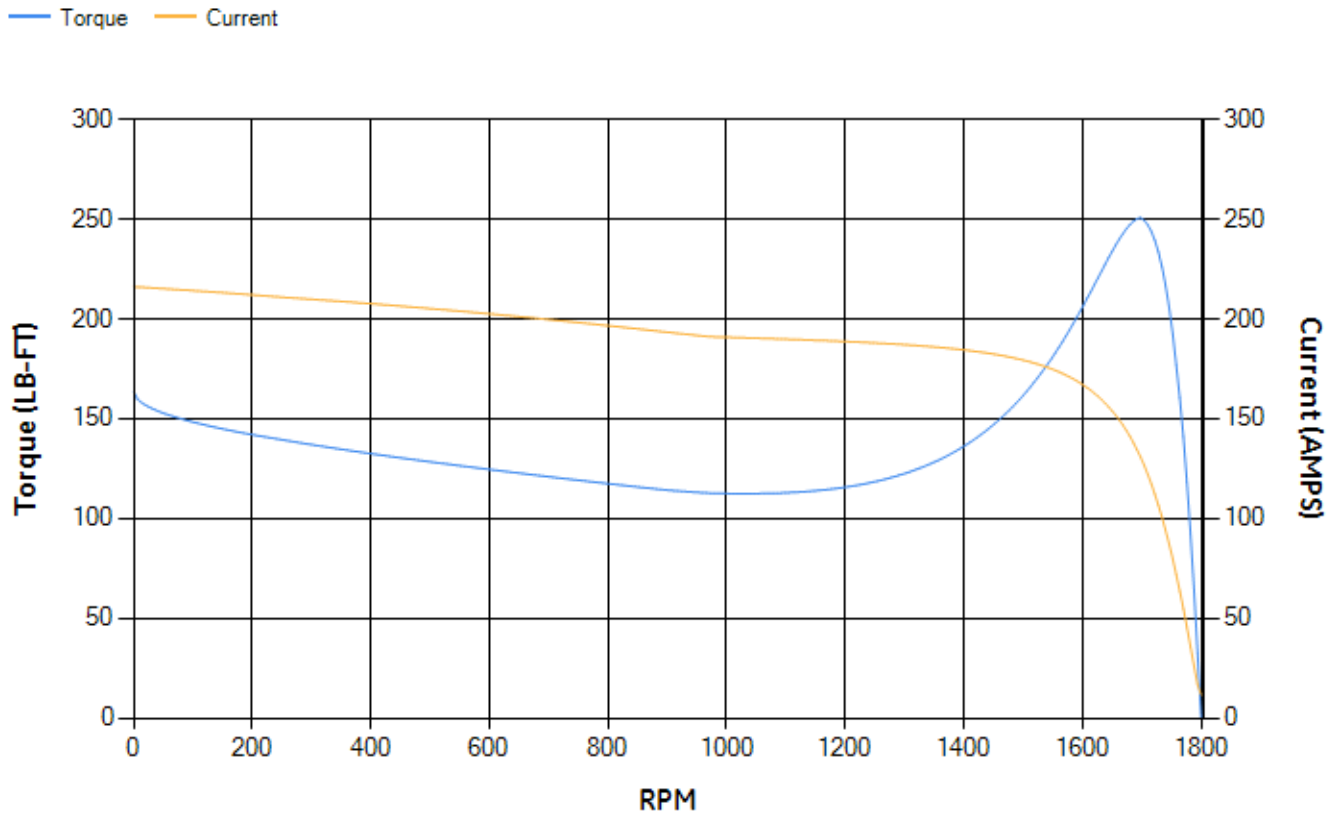
LOAD %	125.0	115.0	100.0	75.0	50.0	25.0	0.0
% EFF	92.5	92.93	93.68	94.1	94.05	91.75	0.00
% PF	86.93	86.75	86.04	82.98	75.01	53.73	4.5
AMPS	43.65	40.05	34.82	26.97	19.9	14.24	11.48

TORQ(FL)#FT	88.62	TORQ(LR)%FL	184.78	TORQ(BD)%FL	281.75
AMPS(LR)	216.09	PF AT START	0.38		

This motor is capable of two cold or one hot start with a maximum connected load inertia of 969 Lb-Ft Sq (40.79 Kg-meter Sq) at 100% voltage, where the load torque varies with the square of the speed. Acceleration time with maximum inertia and the above load type is 51 seconds. Safe stall time at 100% voltage is 90 seconds cold, 61 seconds hot. Rotor inertia is 5.44 Lb-Ft Sq (0.23 Kg-meter Sq).

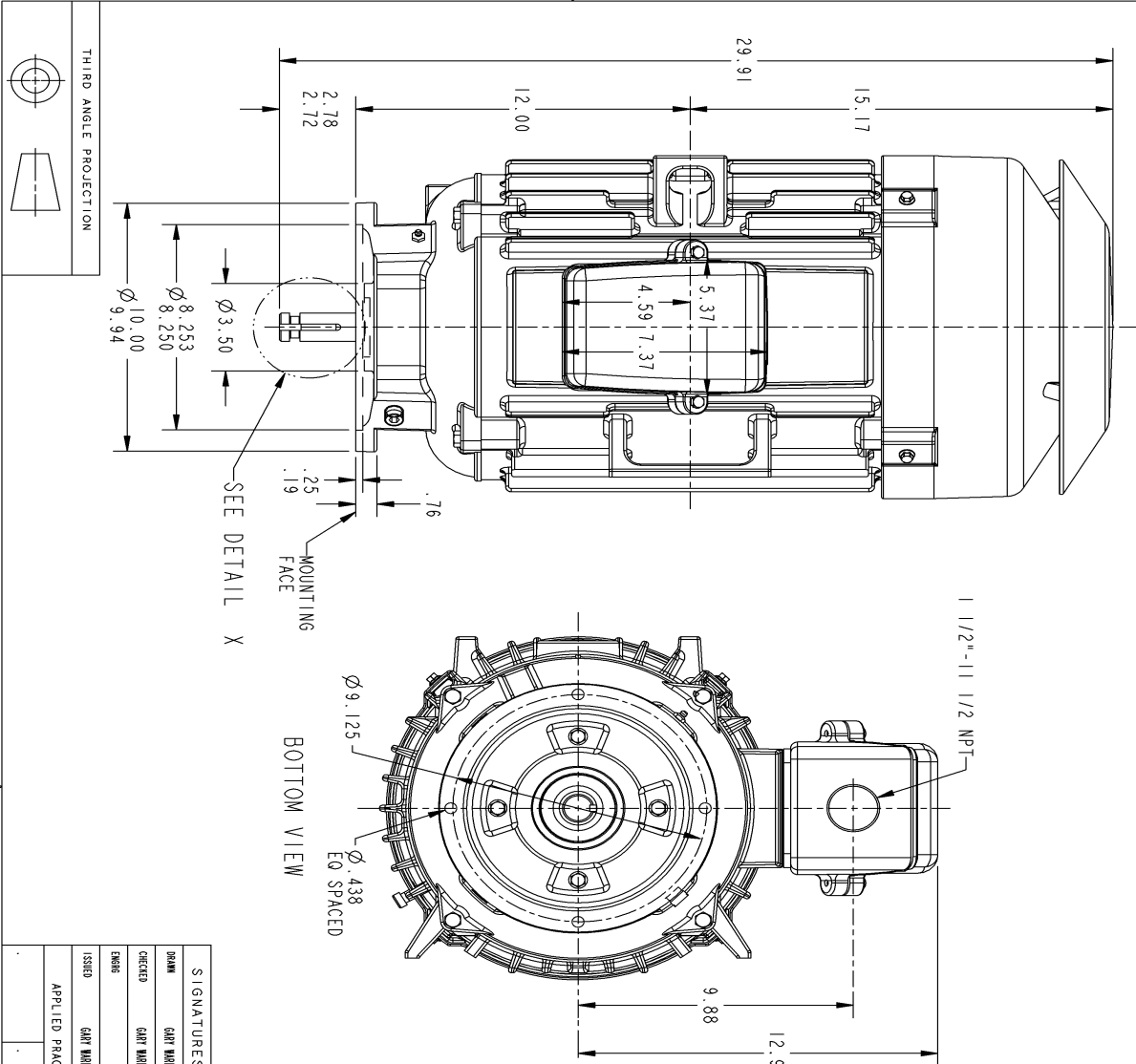
Open Circuit A-C:	0.635	Short Circuit D-C:	0.016
Short Circuit A-C:	0.027	X/R Ratio:	5.921
Stator Slots:	48	Rotor Slots:	40

Speed Torque Current Curve (First Connection, First Speed)



NAME:320002939 OBJECT:4002B5828PLP5210 DATE:24-Sep-09 19:53:07

Marks:



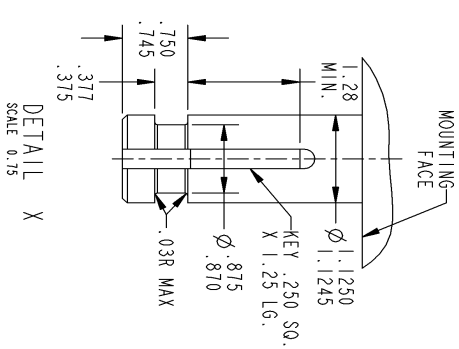
REVISIONS		DATE	APPROVED
REV.	DESCRIPTION		
1	ISAAC 09-0114	09/24/09	DAN

SIGNATURES	DATE
DRAWN GARY WARDNER	JAN 02/02
CHECKED GARY WARDNER	FEB 20/02
ISSUED GARY WARDNER	MAY 03/02

SIZE B	DRAWING NO. 4002B5828PLP5210	SHEET 1 OF 1
--------	------------------------------	--------------

SCALE: 0.250	REF. NO: 4002B5828PLP210
--------------	--------------------------

NOTE 1 : CONDUIT BOX MAY BE ASSEMBLED WITH ENTRANCE UP, DOWN OR TO EITHER SIDE.

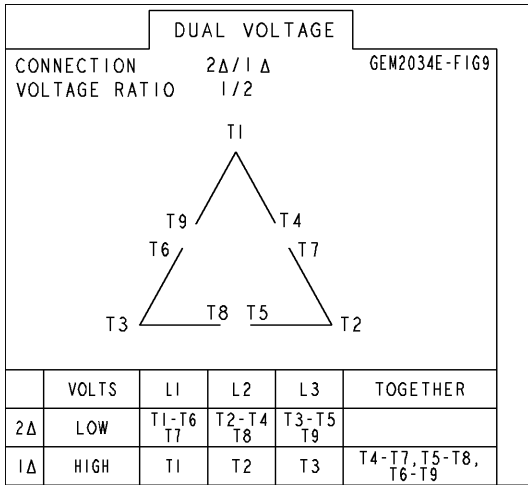


GE Industrial Systems
GENERAL ELECTRIC COMPANY
 Fort Wayne, Indiana

INDUCTION MOTOR OUTLINE
 SOLID SHAFT - NORMAL THRUST
 FMP: FRL280HP STANDARD 4P TEFC XSD ULTRA
4002B5828PLP5210

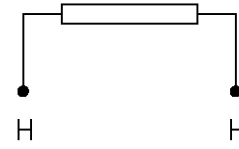
Marks:

Connection Diagram
GEM2034E-FIG9



Heater Connection
3027JE-1

FIG. 1
HEATER CONN.



CONTROL	L1	L2
VOLTAGE ONLY	H	H