

Product Information Packet

November 7, 2016

Data shown is for the current revision model #. Ensure your nameplate model # matches.

Model Number:	5KS444ATE308A
Catalog Number:	E7034
Instruction Manual:	GEI-M1023
Connection Diagram:	GEM2034E-FIG8
Outline Drawing:	358B6204AA

Accessory Connection Diagrams

Bearing Thermocouple:	None	Heater:	None
RTD:	None	Thermistor:	None
Thermostat:	None	Winding Thermocouple:	None
Bearing RTD:	None		

Table of Contents

Specification	01
Performance Characteristics	02
Outline Drawing	03
Connection Drawing(s)	04



Marks:

MODEL NUMBER:	5KS444ATE308A	Estimated Weight:	1600 Lbs
Outline Drawing:	358B6204AA	Time Rating:	CONT
Connection Diagram:	GEM2034E-FIG8	Enclosure:	DP
Instruction Book:	GEI-M1023	Encl Construction:	OPEN
Design Code:	44AD3001A	Ambient Max(°C):	40
Type:	KS	Alt Ambient Max(°C):	--
Frame:	444T	Insulation Class:	F
Phases:	3	NEMA Design:	A
Poles:	6	Nominal Efficiency:	95 %
Output Power:	100HP 74KW	Guaranteed Efficiency:	94.1
RPM:	1190	3/4 Load Efficiency:	95.6
Voltage:	460	KVA Code:	G
Hertz:	60	Max KVAR:	28.5
Amps - FL:	117	Power Factor:	82
Service Factor:	1.15	Bearing - DE:	6318
Alt Service Factor:	--	Bearing - ODE:	6318

Enclosure is Dripproof

Stamped Nameplate Notes:**Additional Information:**

6 POLE DP
 LRA @ 460 V:732.9
 NO. OF MOTOR LEADS: 6
 CONDUIT BOX VOLUME (IN³): 1240
 CONDUIT BOX MTL: STAMPED STEEL
 GREASE TYPE: CHEVRON SRI-2 POLYUREA GREASE
 NOT USABLE AT 200V
 50 HZ DATA: 75HP, 400V, 106 AMPS AT 1.0SF @ 990 RPM
 SOUND POWER: 79.9
 DMK, 06/04, UPDATED 2/2005
 INVERTER DUTY PER NEMA MG1 PART 31
 FOR VARIABLE TORQUE LOADS

Performance Characteristics

1st Winding 1st Connection

Design: 44AD3001A

Marks:

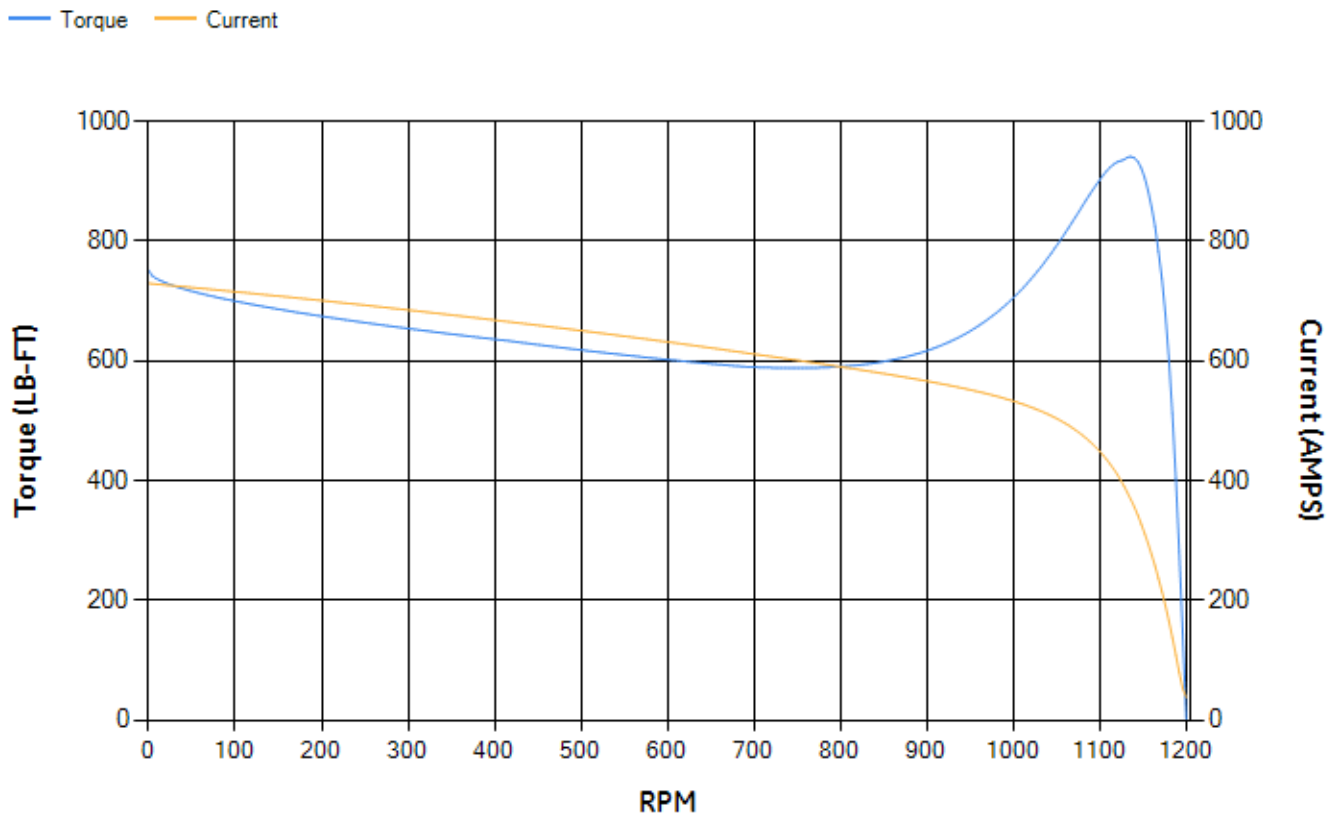
LOAD %	125.0	115.0	100.0	75.0	50.0	25.0	0.0
% EFF	94.68	94.96	95.49	95.59	95.33	93.13	0.00
% PF	84.29	84.38	83.99	81.4	73.88	53.1	3.9
AMPS	146.59	134.34	116.69	90.21	66.44	47.32	37.97

TORQ(FL)#FT	442	TORQ(LR)%FL	169.88	TORQ(BD)%FL	211.05
AMPS(LR)	729.36	PF AT START	0.31		

This motor is capable of two cold or one hot start with a maximum connected load inertia of 7553 Lb-Ft Sq (317.98 Kg-meter Sq)at 100% voltage, where the load torque varies with the square of the speed. Acceleration time with maximum inertia and the above load type is 57 seconds. Safe stall time at 100% voltage is 97 seconds cold, 77 seconds hot. Rotor inertia is 57.34 Lb-Ft Sq (2.41 Kg-meter Sq).

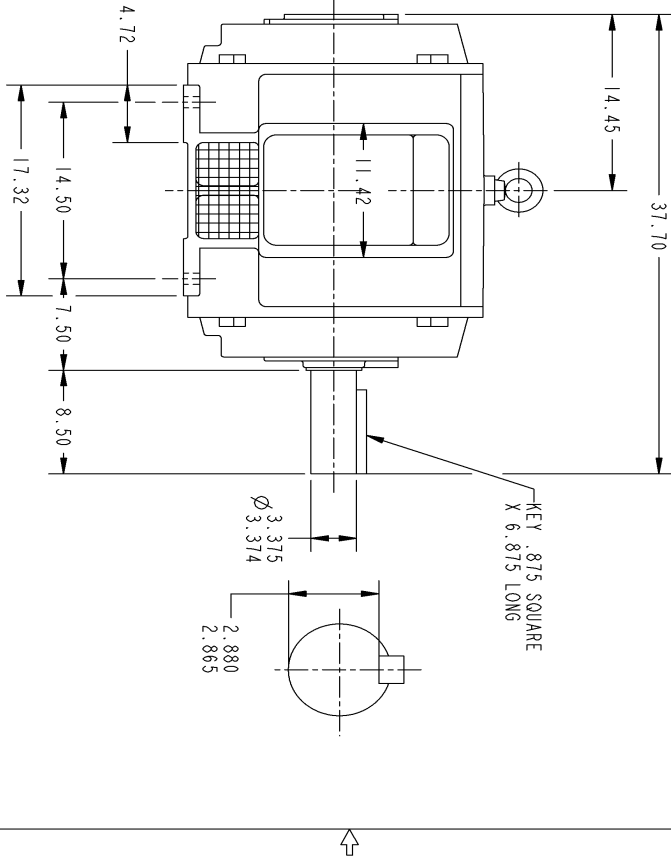
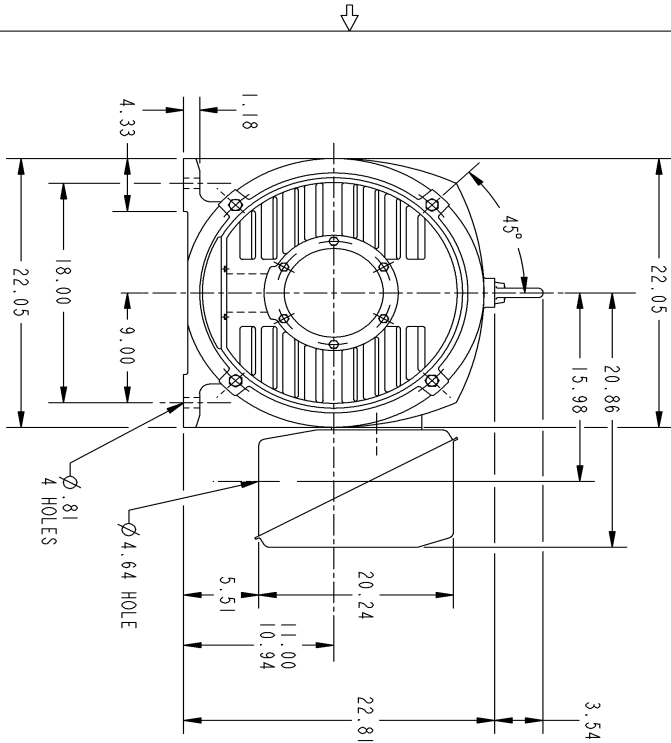
Open Circuit A-C:	0.798	Short Circuit D-C:	0.03
Short Circuit A-C:	0.041	X/R Ratio:	11.324
Stator Slots:	72	Rotor Slots:	58

Speed Torque Current Curve (First Connection, First Speed)



NAME:500903578 OBJECT:358B6204AA DATE:04-May-07 11:03:17

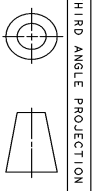
Marks:



GE PROPRIETARY AND CONFIDENTIAL INFORMATION		SIZE	DRAWING NO.	REV	SHEET
This document is the property of General Electric Company (GE) and contains proprietary information of GE. This document is loaned to the recipient conditionally and is not to be distributed, copied, or reproduced in any form without the prior written permission of GE. This document shall be returned to GE upon its request. This document is not to be used for any other purpose without the prior written permission of GE. GE reserves the right to modify this document without notice.		B	358B6204AA	1	1
REVISIONS					
REV.	DESCRIPTION	DATE	APPROVED		
1	ISAAC 07-0770	05/02/07	R. KOHNE		

NOTES :

- CONDUIT BOX MAY BE PLACED WITH THE ENTRANCE DOWN, UP OR ON EITHER SIDE.
- F-1 ASM AS SHOWN.
- F-2 ASM - HAS CONDUIT BOX ON OPPOSITE SIDE.



THIRD ANGLE PROJECTION

FOR ADDITIONAL INFO REFER TO:	SIGNATURES	DATE	GENERAL ELECTRIC COMPANY	
APPLIED PRACTICES	MODEL		Systems	
DIMENSIONS ARE IN INCHES	REVISION			
TOLERANCE ON: 1 PL DECIMALS ± .015 2 PL DECIMALS ± .010 3 PL DECIMALS ± .005 ANGLES ± .010	DESIGNED	12/12/02	OUTLINE	
	ENGINEER	12/12/02	444T - CAST IRON ODP FOOTED	
	QUALITY		358B6204AA	
MATERIAL	ISSUED	12/13/02	REV 1	
	SOLD MODEL		SCALE: DRAWING SCALE	
	MODEL NAME		SHEET 1 of 1	

Marks:

Connection Diagram
GEM2034E-FIG8

