

# Product Information Packet

January 12, 2017

Data shown is for the current revision model #. Ensure your nameplate model # matches.

<b>Model Number:</b>	<b>5KS511SAA2004A</b>
<b>Catalog Number:</b>	<b>Q5007</b>
<b>Instruction Manual:</b>	GEI-56128
<b>Connection Diagram:</b>	GEM2034E-FIG20
<b>Outline Drawing:</b>	239C6B00MK

Accessory Connection Diagrams			
<b>Bearing Thermocouple:</b>	None	<b>Heater:</b>	3027JE-1C
<b>RTD:</b>	None	<b>Thermistor:</b>	None
<b>Thermostat:</b>	None	<b>Winding Thermocouple:</b>	None
<b>Bearing RTD:</b>	None		

Table of Contents	
Specification	01
Performance Characteristics	02
Outline Drawing	03
Connection Drawing(s)	04

**Marks:**

<b>MODEL NUMBER:</b>	<b>5KS511SAA2004A</b>	<b>Estimated Weight:</b>	5567 Lbs
<b>Outline Drawing:</b>	239C6B00MK	<b>Time Rating:</b>	CONT
<b>Connection Diagram:</b>	GEM2034E-FIG20	<b>Enclosure:</b>	TEFC
<b>Instruction Book:</b>	GEI-56128	<b>Encl Construction:</b>	SD
<b>Design Code:</b>	50BD1170A	<b>Ambient Max(°C):</b>	40
<b>Type:</b>	KS	<b>Alt Ambient Max(°C):</b>	--
<b>Frame:</b>	5011LL	<b>Insulation Class:</b>	F
<b>Phases:</b>	3	<b>NEMA Design:</b>	B
<b>Poles:</b>	4	<b>Nominal Efficiency:</b>	96.2 %
<b>Output Power:</b>	500HP 370KW	<b>Guaranteed Efficiency:</b>	95.4
<b>RPM:</b>	1785	<b>3/4 Load Efficiency:</b>	96.8
<b>Voltage:</b>	460	<b>KVA Code:</b>	G
<b>Hertz:</b>	60	<b>Max KVAR:</b>	91.3
<b>Amps - FL:</b>	541.0	<b>Power Factor:</b>	90.0
<b>Service Factor:</b>	1.15	<b>Bearing - DE:</b>	6320ZC3
<b>Alt Service Factor:</b>	--	<b>Bearing - ODE:</b>	6315ZC3

**Enclosure is Totally Enclosed Fan-Cooled**

---

**Stamped Nameplate Notes:**

HTR LDS HE1-HE2 115V 350W  
 INVERTER DUTY PER NEMA MG1 PART 31  
 ALTERNATE RATING FOR PWM CONTROL:1.0SF 40C AMBIENT  
 VAR TORQUE RANGE 0-60 HZ  
 FOR DIRECT COUPLED LOAD ONLY

**Additional Information:**

4P - LL EXTN - SPLIT LEAD  
 2500 CU IN - 2(4.00" NPT)  
 C/B GRD PLATE  
 115V HTR LDS TO AUX BOX OPP MAIN CONDUIT BOX  
 SPACE HEATER CAUTION NAMEPLATE  
 NEMA TYPE GRD PAD  
 F1 MOUNTING  
 PROVISION FOR BTD ON BOTH ENDS PLUGGED

**Performance Characteristics**

1st Winding 1st Connection

**Design: 50BD1170A**

**Marks:**

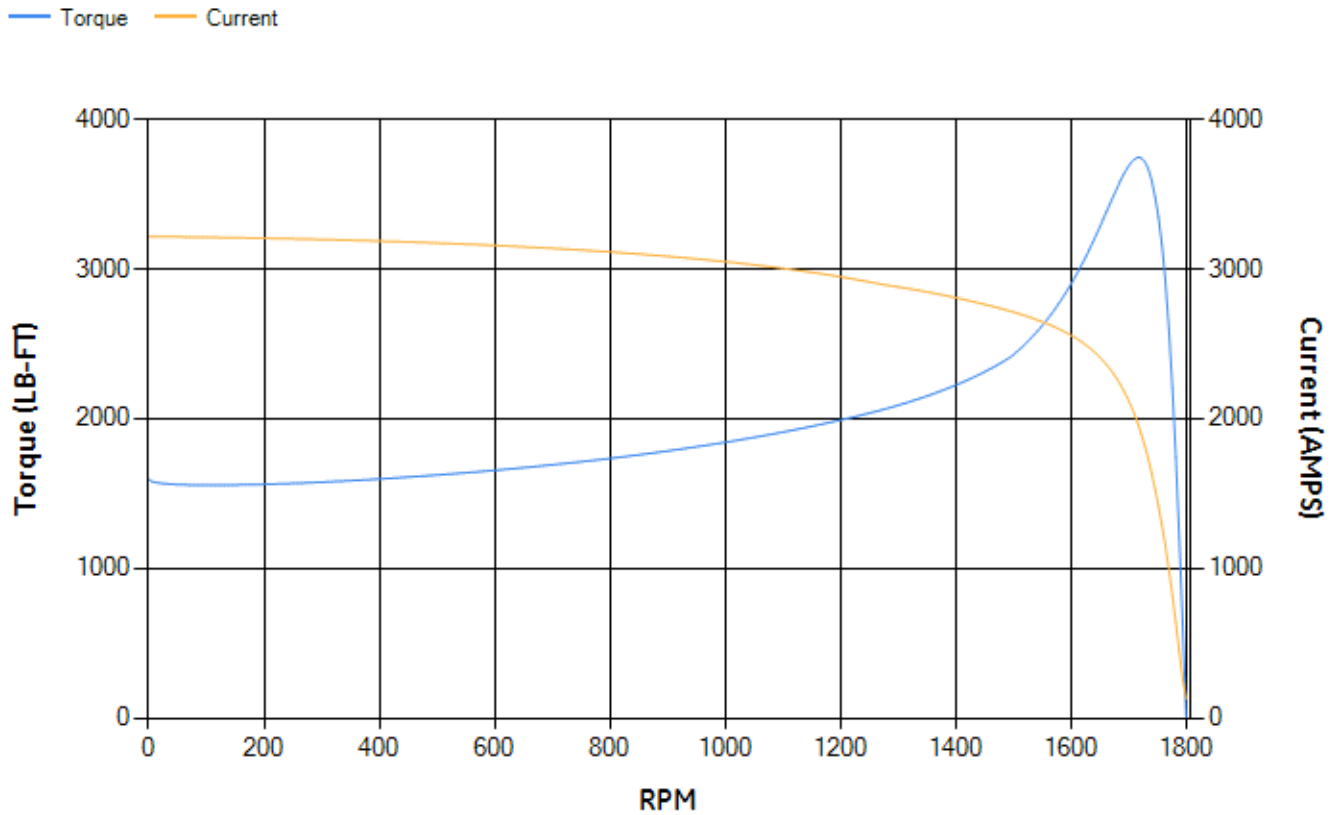
LOAD %	125.0	115.0	100.0	75.0	50.0	25.0	0.0
% EFF	96.18	96.36	96.78	96.79	96.61	95.04	0.00
% PF	90.05	90.21	90.15	88.84	84.12	67.11	4.14
AMPS	675.35	619.09	536.78	408.18	287.91	183.42	127.27

<b>TORQ(FL)#FT</b>	1471.05	<b>TORQ(LR)%FL</b>	108.47	<b>TORQ(BD)%FL</b>	254.42
<b>AMPS(LR)</b>	3216.89	<b>PF AT START</b>	0.23		

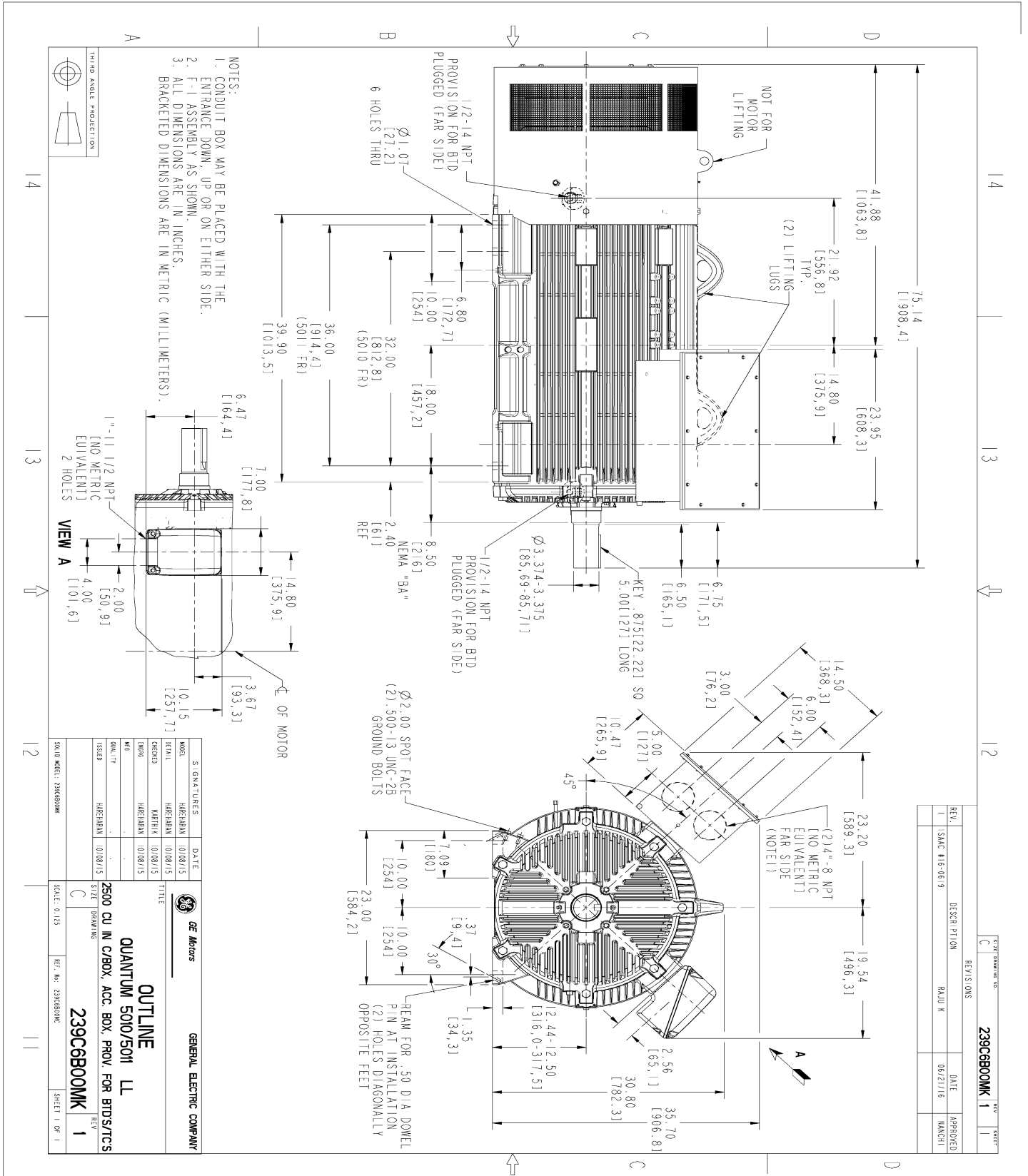
This motor is capable of two cold or one hot start with a maximum connected load inertia of 11638 Lb-Ft Sq (489.96 Kg-meter Sq)at 100% voltage, where the load torque varies with the square of the speed. Acceleration time with maximum inertia and the above load type is 46 seconds. Safe stall time at 100% voltage is 90 seconds cold, 56 seconds hot. Rotor inertia is 192.88 Lb-Ft Sq (8.12 Kg-meter Sq).

<b>Open Circuit A-C:</b>	1.302	<b>Short Circuit D-C:</b>	0.043
<b>Short Circuit A-C:</b>	0.046	<b>X/R Ratio:</b>	16.352
<b>Stator Slots:</b>	72	<b>Rotor Slots:</b>	58

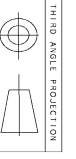
**Speed Torque Current Curve (First Connection, First Speed)**



Marks:



- NOTES:
1. CONDUIT BOX MAY BE PLACED WITH THE ENTRANCE DOWN, UP OR ON EITHER SIDE.
  2. F-1 ASSEMBLY AS SHOWN.
  3. ALL DIMENSIONS ARE IN INCHES. BRACKETED DIMENSIONS ARE IN METRIC (MILLIMETERS).



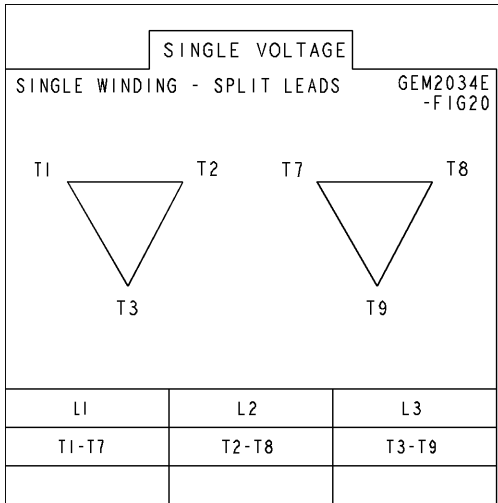
MODEL	SIGNATURES	DATE	<p><b>GENERAL ELECTRIC COMPANY</b></p> <p><b>OUTLINE</b></p> <p><b>QUANTUM 5010/5011 LL</b></p> <p><b>2500 CU IN C/BOX, ACC. BOX, PROV. FOR BTD/S/TCS</b></p> <p><b>239C6B00MK</b></p>
SCALE	HAEGERMAN	01/08/15	
DESIGN	MATHIA	01/08/15	
ISSUED	HAEGERMAN	01/08/15	
QUALITY			<p>SCALE: 0.125</p> <p>REF. NO. 239S60MK</p> <p>SHEET 1 OF 1</p>

REV.	DESCRIPTION	DATE	APPROVED
1	SAC #16-06-9	06/21/16	MANCH

SIZE	REV'S	DATE	SHEET
C	0NS		1

Marks:

**Connection Diagram**  
GEM2034E-FIG20



**Heater Connection**  
3027JE-1C

