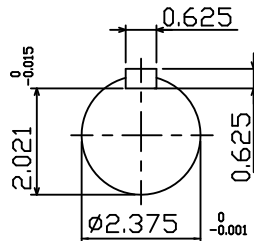
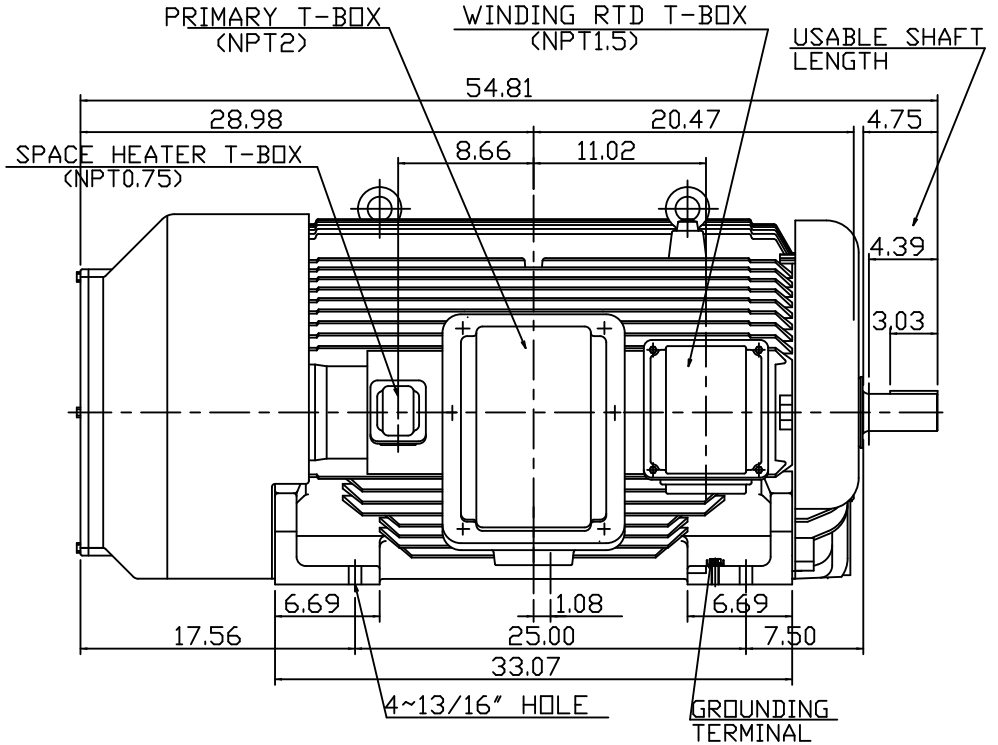
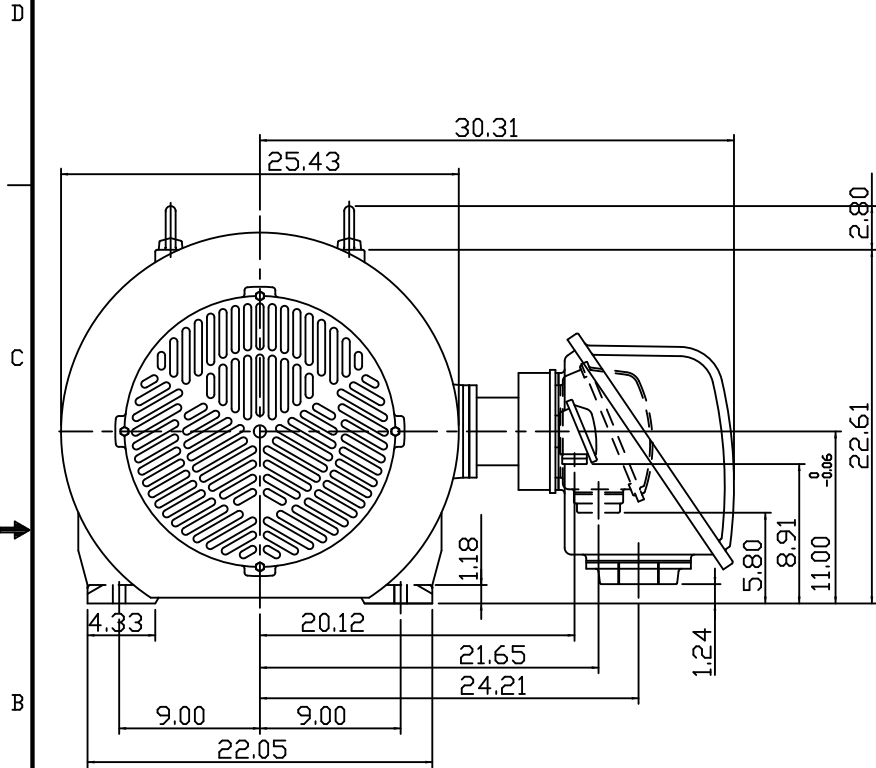


TYPE	OUTPUT		POLE	TIME RATING	VOLTAGE V	Hz	SYN.SPEED R.P.M
	HP.	kW.					
AEHG-TK	300	224	2	CONT.	2300/4160	60	3600

TOTALLY ENCLOSED FAN COOLED TYPE, SQUIRREL CAGE ROTOR



SHAFT END ENLARGED VIEW

NOTE:

1. DIMENSIONS IN inch
2. FRAME NO. 449TS
3. F CLASS INSULATION, S.F.1.15
4. FOR DIRECT FLEXIBLE COUPLING
5. BEARING SIZE: DRIVE-END 6314C3  
OPP. DRIVE-END 6314C3
6. WITH SPACE HEATER: 1Ø 120V 150W
7. WITH WINDING RTD: PT 100Ω /0°C 6PCS
8. ENCLOSURE: IP54
9. APPROX WEIGHT 2400 lbs

DATE January 12, 2014	OUTLINE DIMENSIONS
Catalog #: KG3002T	3-PHASE INDUCTION MOTOR
DWG NO. 4A040Y474	REV: 00

DWN.	S.LEE	DEC-04-2013
CHKD.	S.LEE	DEC-04-2013
APPD.	C.SHIH	DEC-04-2013

