

Product Information Packet

November 8, 2016

Data shown is for the current revision model #. Ensure your nameplate model # matches.

Model Number:	5KS324STE105A
Catalog Number:	M7712
Instruction Manual:	GEI-M1031
Connection Diagram:	GEM2034E-FIG210
Outline Drawing:	358B6274AA

Accessory Connection Diagrams			
Bearing Thermocouple:	None	Heater:	None
RTD:	None	Thermistor:	None
Thermostat:	None	Winding Thermocouple:	None
Bearing RTD:	None		

Table of Contents	
Specification	01
Performance Characteristics	02
Outline Drawing	03
Connection Drawing(s)	04



Marks:

MODEL NUMBER:	5KS324STE105A	Estimated Weight:	826 Lbs
Outline Drawing:	358B6274AA	Time Rating:	CONT
Connection Diagram:	GEM2034E-FIG210	Enclosure:	TEFC
Instruction Book:	GEI-M1031	Encl Construction:	SD
Design Code:	32AD0012A	Ambient Max(°C):	40
Type:	KS	Alt Ambient Max(°C):	--
Frame:	324T	Insulation Class:	F
Phases:	3	NEMA Design:	B
Poles:	2	Nominal Efficiency:	92.4 %
Output Power:	40HP 29.6KW	Guaranteed Efficiency:	91.0
RPM:	3540	3/4 Load Efficiency:	92.7
Voltage:	230/460	KVA Code:	G
Hertz:	60	Max KVAR:	6.1
Amps - FL:	89/44.5	Power Factor:	91.0
Service Factor:	1.15	Bearing - DE:	6312C3
Alt Service Factor:	--	Bearing - ODE:	6212C3

Enclosure is Totally Enclosed Fan-Cooled

Stamped Nameplate Notes:

LRA: 556.4/278.2

50HZ DATA: 30 HP,200/400V,87.8/43.9 AMPS @ 1.15 SF

50HZ DATA:40 HP,200/400V,102.4/51.2 AMPS @ 1.00 SF

GREASE TYPE: EXXON POLYREX EM

Additional Information:

CONDUIT BOX MATERIAL: CAST IRON

SUITABLE FOR USE IN CLASS I DIVISION 2 LOCATIONS

CLASS I DIVISION 2 GROUPS A,B,C,D T3C

CLASS I ZONE 2 IIC T3C



Performance Characteristics

1st Winding 1st Connection

Design: 32AD0012A

Marks:

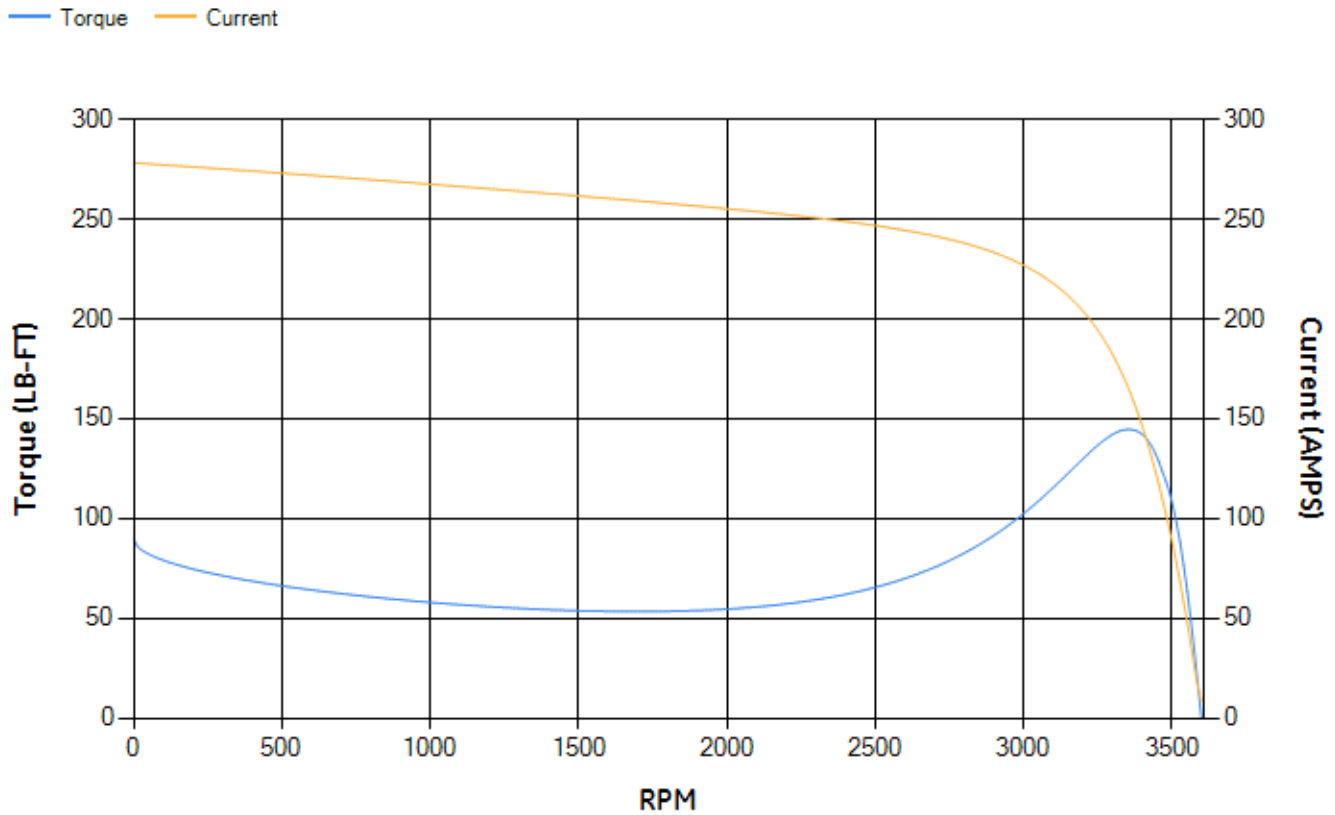
LOAD %	125.0	115.0	100.0	75.0	50.0	25.0	0.0
% EFF	91.22	91.66	92.39	92.65	92.17	88.51	0.00
% PF	90.66	91.03	91.3	90.76	87.66	74.93	12.56
AMPS	56.59	51.6	44.39	33.39	23.17	14.11	8.45

TORQ(FL)#FT	59.32	TORQ(LR)%FL	151.28	TORQ(BD)%FL	242.08
AMPS(LR)	278.18	PF AT START	0.26		

This motor is capable of two cold or one hot start with a maximum connected load inertia of 137 Lb-Ft Sq (5.77 Kg-meter Sq)at 100% voltage, where the load torque varies with the square of the speed. Acceleration time with maximum inertia and the above load type is 31 seconds. Safe stall time at 100% voltage is 59 seconds cold, 37 seconds hot. Rotor inertia is 4.57 Lb-Ft Sq (0.19 Kg-meter Sq).

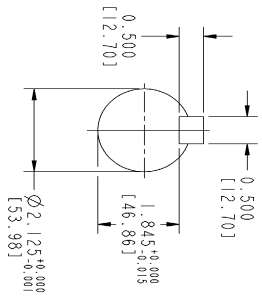
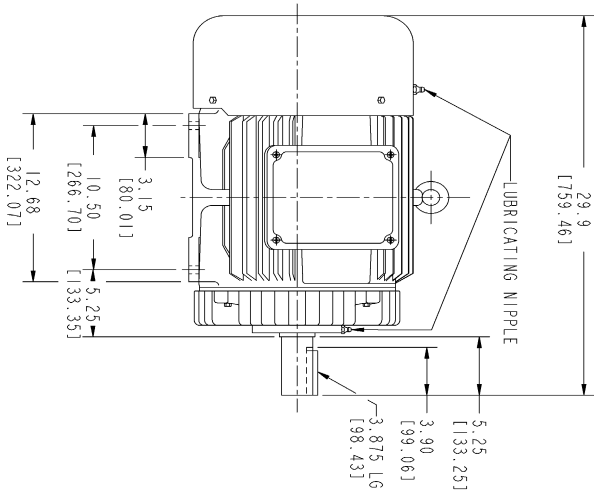
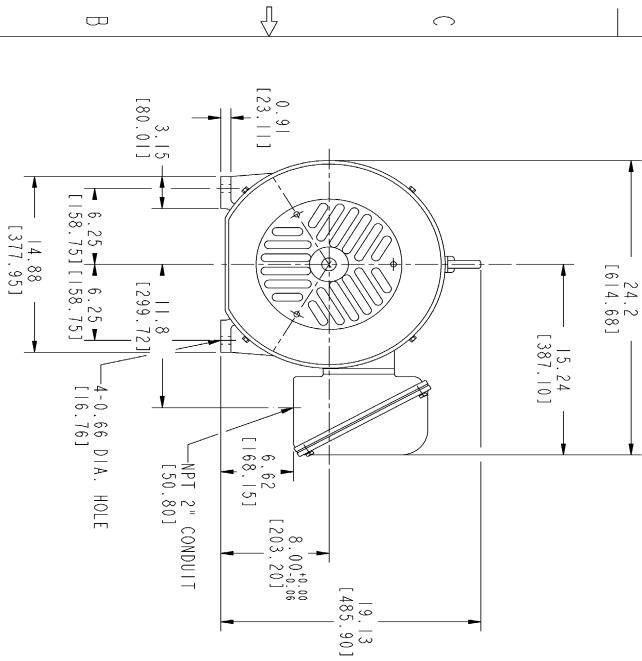
Open Circuit A-C:	0.868	Short Circuit D-C:	0.022
Short Circuit A-C:	0.025	X/R Ratio:	8.289
Stator Slots:	36	Rotor Slots:	28

Speed Torque Current Curve (First Connection, First Speed)

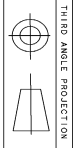


NAME:501291659 OBJECT:358B6274AA DATE:05-Dec-07 10:35:05

Marks:



- NOTES :
1. DIMENSIONS ARE IN INCHES.
 2. F-1 ASM AS SHOWN.
 3. F-2 ASM - HAS CONDUIT BOX ON OPPOSITE SIDE.
 4. BRACKETED DIMENSIONS ARE METRIC (MILLIMETERS)
 5. IC411, IP54, IMB34 APPLY



THIRD ANGLE PROJECTION

Part must conform to SI 900000 Sect. 4, Toxicity Procedure

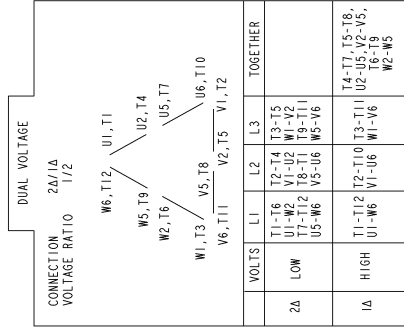
REVISIONS		
REV.	DESCRIPTION	DATE

FOR ADDITIONAL INFO REFER TO:		SIGNATURES		DATE	
APPROVED	DATE				
DESIGNED	DATE				
DRAWN	DATE				
CHECKED	DATE				
ENG'G	DATE				
QUALITY	DATE				
ISSUED	DATE				
MATERIAL		FINISH		SCALE	

GE Consumer & Industrial
GENERAL ELECTRIC COMPANY
OUTLINE
FTD - 324T TFC CE MARK
2729 CU IN CONDUIT BOX
358B6274AA
 SHEET 1 OF 1

Marks:

Connection Diagram
GEM2034E-FIG210



NAME:501452353 OBJECT:GEM2034E-FIG210 DATE:25-Feb-08 14:03:35