

Product Information Packet

January 12, 2017

Data shown is for the current revision model #. Ensure your nameplate model # matches.

| | |
|----------------------------|----------------------|
| Model Number: | 5KS511SAA372A |
| Catalog Number: | Q596 |
| Instruction Manual: | GEI-56128 |
| Connection Diagram: | GEM2034E-FIG20 |
| Outline Drawing: | 239C6B00ML |

| Accessory Connection Diagrams | | | |
|-------------------------------|------|------------------------------|-----------|
| Bearing Thermocouple: | None | Heater: | 3027JE-1C |
| RTD: | None | Thermistor: | None |
| Thermostat: | None | Winding Thermocouple: | None |
| Bearing RTD: | None | | |

| Table of Contents | |
|-----------------------------|----|
| Specification | 01 |
| Performance Characteristics | 02 |
| Outline Drawing | 03 |
| Connection Drawing(s) | 04 |

Marks:

| | | | |
|----------------------------|----------------------|-------------------------------|----------|
| MODEL NUMBER: | 5KS511SAA372A | Estimated Weight: | 5626 Lbs |
| Outline Drawing: | 239C6B00ML | Time Rating: | CONT |
| Connection Diagram: | GEM2034E-FIG20 | Enclosure: | TEFC |
| Instruction Book: | GEI-56128 | Encl Construction: | SD |
| Design Code: | 50BD3097AA | Ambient Max(°C): | 40 |
| Type: | KS | Alt Ambient Max(°C): | -- |
| Frame: | 5011L | Insulation Class: | F |
| Phases: | 3 | NEMA Design: | -- |
| Poles: | 6 | Nominal Efficiency: | 96.2 % |
| Output Power: | 400HP 296KW | Guaranteed Efficiency: | 95.4 |
| RPM: | 1190 | 3/4 Load Efficiency: | 96.4 |
| Voltage: | 460 | KVA Code: | G |
| Hertz: | 60 | Max KVAR: | 97.0 |
| Amps - FL: | 450.0 | Power Factor: | 86.5 |
| Service Factor: | 1.15 | Bearing - DE: | NU 320 |
| Alt Service Factor: | -- | Bearing - ODE: | 6315ZC3 |

Enclosure is Totally Enclosed Fan-Cooled

Stamped Nameplate Notes:

HTR LDS HE1-HE2 115V 350W
 INVERTER DUTY PER NEMA MG1 PART 31
 ALTERNATE RATING FOR PWM CONTROL:1.0SF 40C AMBIENT
 VAR TORQUE RANGE 0-60 HZ
 ROLLER BEARING - FOR BELTED LOAD ONLY

Additional Information:

6P - L EXTN - SPLIT LEAD
 2500 CU IN - 2(4.00" NPT)
 C/B GRD PLATE
 B5F4C4 HIGH STRENGTH STEEL AISI 4142 SHAFT MATERIAL
 115V HTR LDS TO AUX BOX OPP MAIN CONDUIT BOX
 SPACE HEATER CAUTION NAMEPLATE
 NEMA TYPE GRD PAD
 F1 MOUNTING
 SHAFT BLOCKING FOR SHIPMENT
 PROVISION FOR BTD ON BOTH ENDS PLUGGED

Performance Characteristics

1st Winding 1st Connection

Design: 50BD3097AA

Marks:

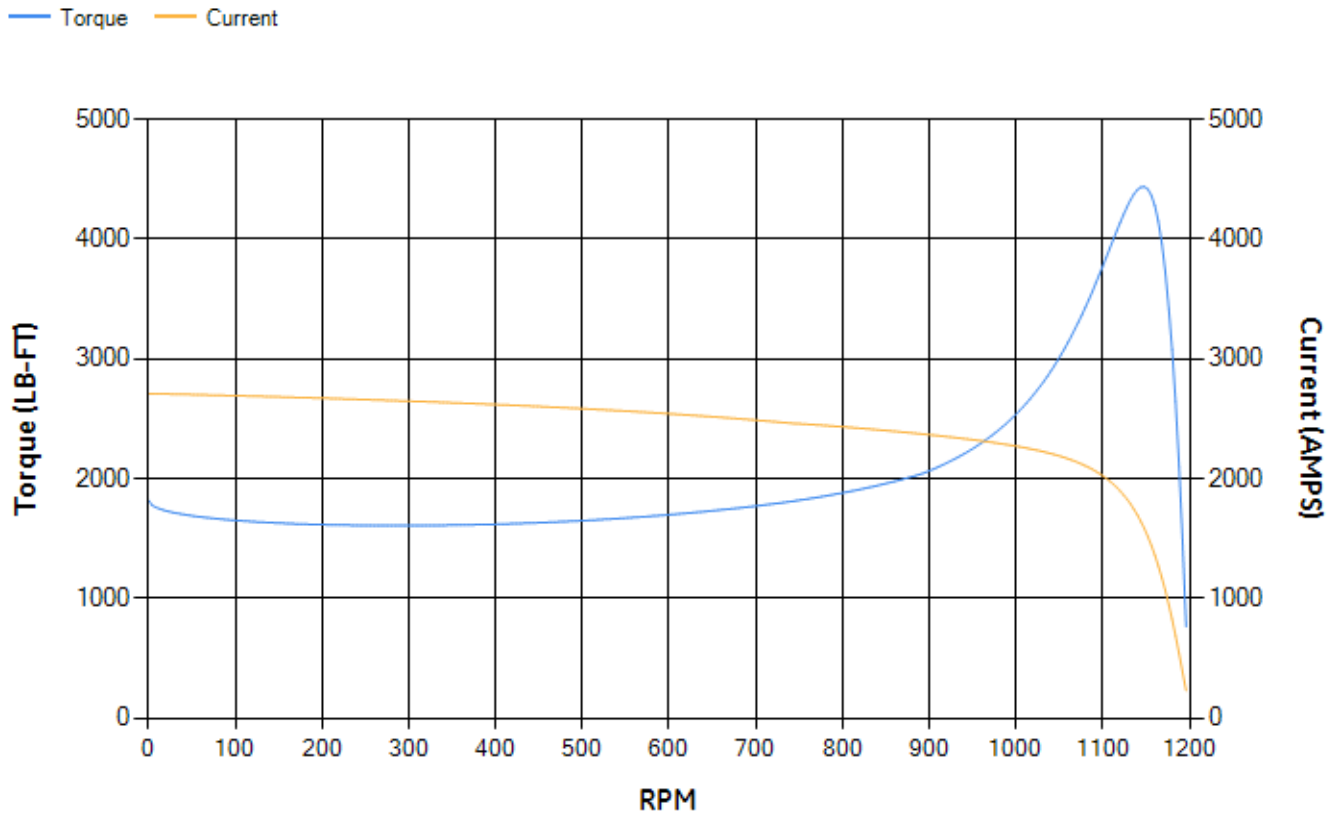
| LOAD % | 125.0 | 115.0 | 100.0 | 75.0 | 50.0 | 25.0 | 0.0 |
|--------|--------|--------|--------|--------|--------|-------|-------|
| % EFF | 95.41 | 95.67 | 96.21 | 96.39 | 96.37 | 94.97 | 0.00 |
| % PF | 86.72 | 86.75 | 86.37 | 84.03 | 77.12 | 56.7 | 3.01 |
| AMPS | 565.58 | 518.73 | 450.73 | 346.65 | 251.84 | 173.8 | 135.3 |

| | | | | | |
|-------------|---------|-------------|-------|-------------|--------|
| TORQ(FL)#FT | 1765.44 | TORQ(LR)%FL | 102.9 | TORQ(BD)%FL | 250.89 |
| AMPS(LR) | 2709.57 | PF AT START | 0.21 | | |

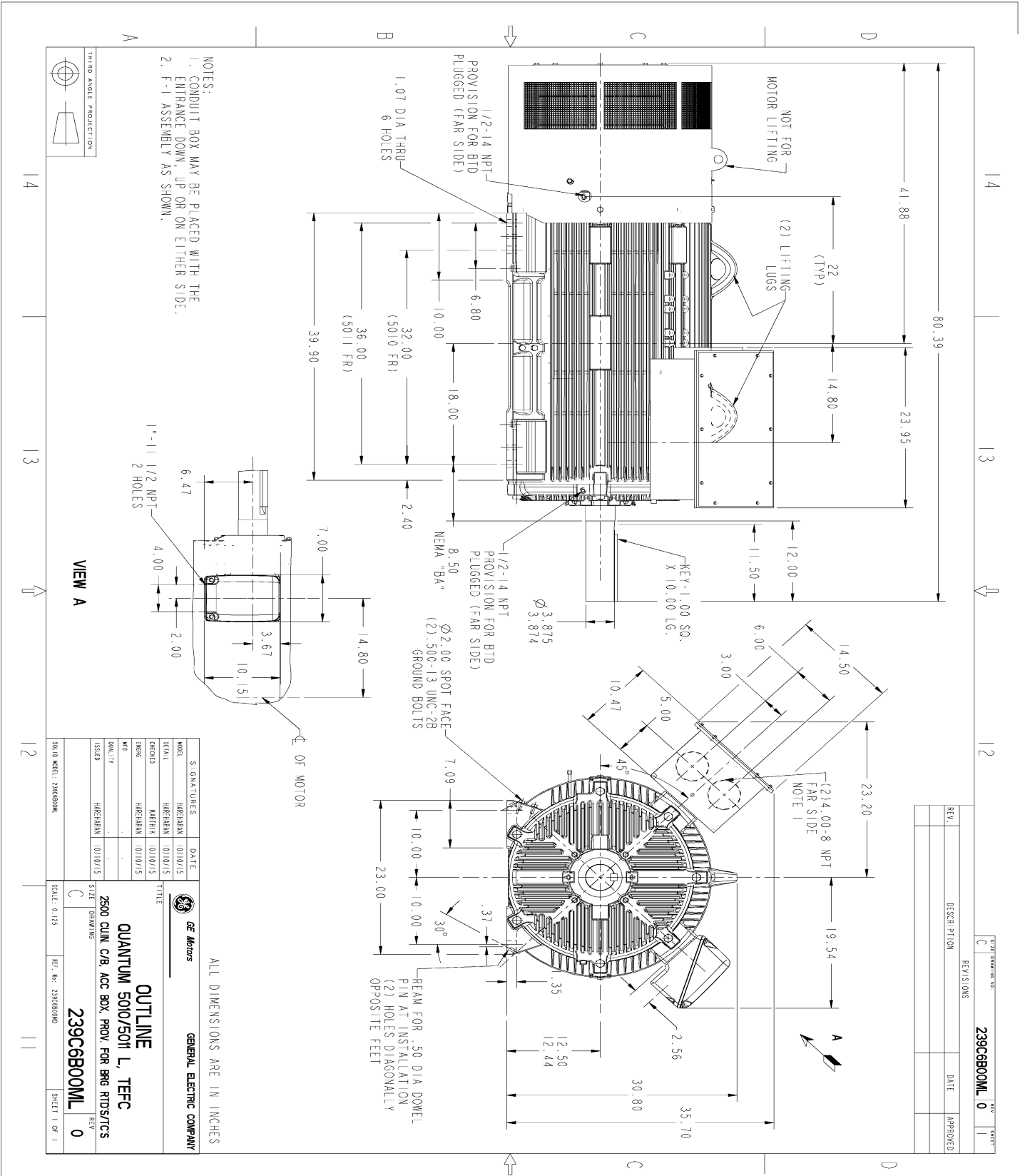
This motor is capable of two cold or one hot start with a maximum connected load inertia of 19174 Lb-Ft Sq (807.23 Kg-meter Sq)at 100% voltage, where the load torque varies with the square of the speed. Acceleration time with maximum inertia and the above load type is 52 seconds. Safe stall time at 100% voltage is 110 seconds cold, 65 seconds hot. Rotor inertia is 259.82 Lb-Ft Sq (10.94 Kg-meter Sq).

| | | | |
|--------------------|-------|--------------------|--------|
| Open Circuit A-C: | 1.009 | Short Circuit D-C: | 0.038 |
| Short Circuit A-C: | 0.048 | X/R Ratio: | 14.194 |
| Stator Slots: | 72 | Rotor Slots: | 58 |

Speed Torque Current Curve (First Connection, First Speed)



Marks:



| | | | |
|------|-------------|------|----------|
| REV. | DESCRIPTION | DATE | APPROVED |
| | | | |

| | | | | | |
|-------|------------|------|----------|-------|---|
| SIZE | 239C6B00ML | REV | 0 | SHEET | 1 |
| REV'S | ONS | DATE | APPROVED | | |

| | | |
|------------|----------|--|
| SIGNATURES | DATE | <p>GENERAL ELECTRIC COMPANY</p> <p>OUTLINE</p> <p>QUANTUM 5010/5011 L, TEFC</p> <p>2500 CUM C/B, ACC BOX, PROV. FOR BRG FITS/CTS</p> <p>239C6B00ML</p> <p>REV 0</p> |
| MODEL | 01/10/15 | |
| SCALE | 01/10/15 | |
| DESIGN | 01/10/15 | |
| ISSUED | 01/10/15 | |

ALL DIMENSIONS ARE IN INCHES

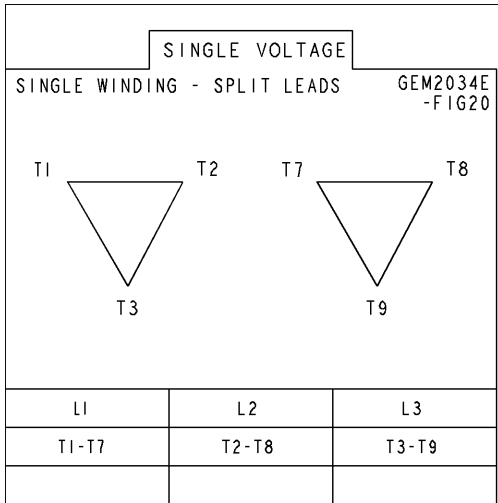
SCALE: 0.125

REF. NO: 23965000

SHEET 1 OF 1

Marks:

Connection Diagram
GEM2034E-FIG20



Heater Connection
3027JE-1C

