

Product Information Packet

November 7, 2016

Data shown is for the current revision model #. Ensure your nameplate model # matches.

| | |
|----------------------------|------------------------|
| Model Number: | 5CD153JA001B106 |
| Catalog Number: | D424 |
| Instruction Manual: | GEH-3967N |
| Connection Diagram: | 36A167760CA501 |
| Outline Drawing: | 36A167932AA002 |

| Accessory Connection Diagrams | | | |
|-------------------------------|------|------------------------------|------|
| Bearing Thermocouple: | None | Heater: | None |
| RTD: | None | Thermistor: | None |
| Thermostat: | None | Winding Thermocouple: | None |
| Bearing RTD: | None | | |

| Table of Contents | |
|-----------------------|----|
| Specification | 01 |
| Outline Drawing | 02 |
| Connection Drawing(s) | 03 |

Marks:

| | | | |
|----------------------------|----------------------------|-----------------------------|----------------|
| MODEL NUMBER: | 5CD153JA001B106 | Enclosure Mtg Assem: | 36A167770AC401 |
| Outline Drawing: | 36A167932AA002 | Instruction Book: | GEH-3967N |
| Connection Diagram: | 36A167760CA501 | RPM: | 1750/2300 |
| Horsepower: | 10 | Armature Amps: | 17.2 |
| Armature Volts: | 500 | Type: | CD219AT |
| Wound: | SHUNT | Power Supply Code: | D |
| Enclosure: | DPFG-SV | Insulation Class: | F |
| Duty: | CONT | Ambient Max (°C): | 40 C |
| Rating Code: | 153J1340-00 | Field Volts: | 300/150 |
| K(V): | 2.39 Cemf volts/Radian/Sec | WK2: | 1.49Lb Ft2 |
| K(T): | 1.74 Ft/Amp | Year of Manufacture: | 2016 |
| Minimum Ambient: | 0 C | Max Altitude: | 3300 Ft |

Resistances at 25 Degrees C :

| | |
|--------------------------|-------------|
| Shunt Field: | 158 OHMS |
| Armature: | 1.9109 OHMS |
| Commutator Field: | .6474 OHMS |

Inductances:

| | |
|--------------------------------|--------------------------|
| Armature Circuit Total: | 33.140 mH Saturated |
| Shunt Field: | 82.0 Henries Unsaturated |

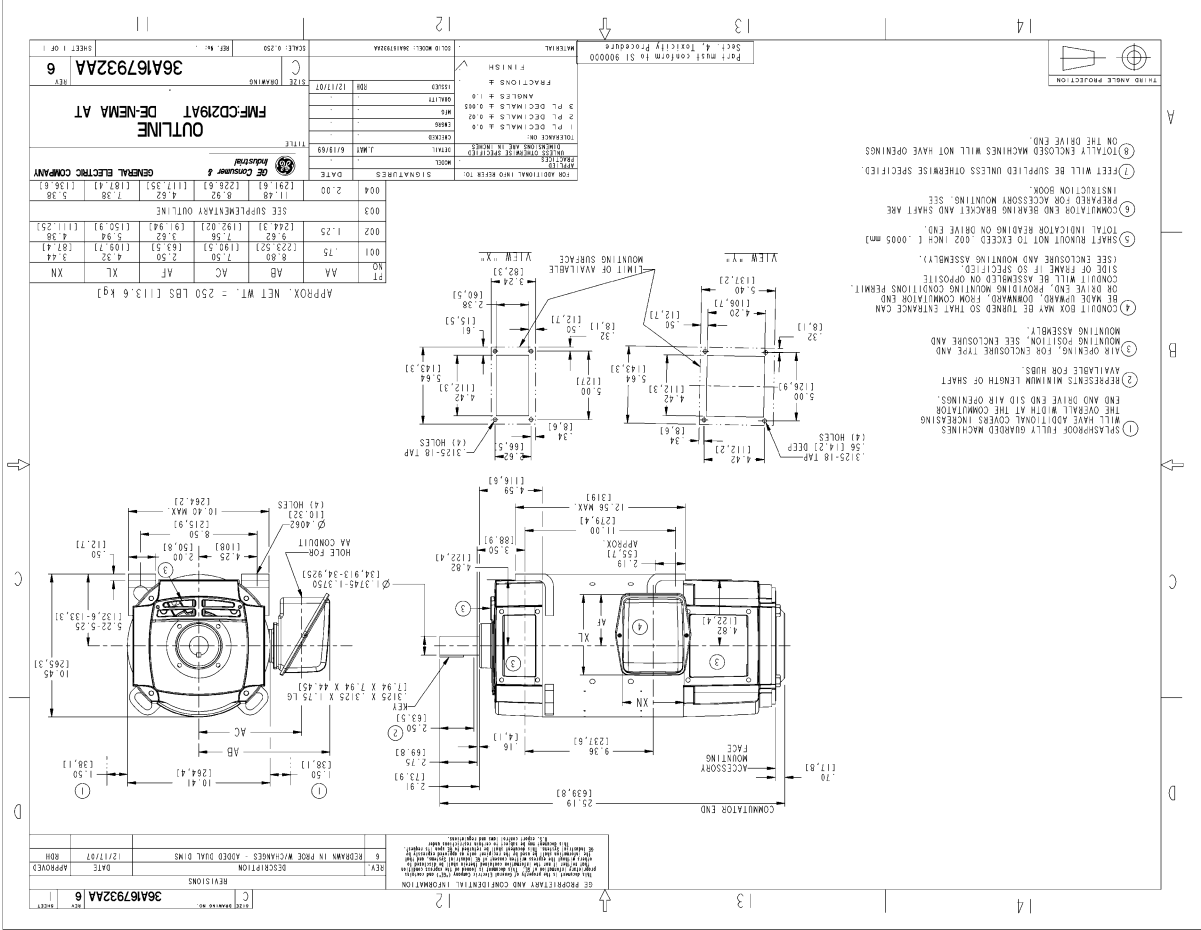
Shunt Field Data:

Shunt Field Current(1): 1.35 AMPS at Rated Load and 1750 RPM
 Shunt Field Current(2): 1.15 AMPS at Rated Load and 1933 RPM
 Shunt Field Current(3): .88 AMPS at Rated Load and 2300 RPM

Additional Machine Notes:

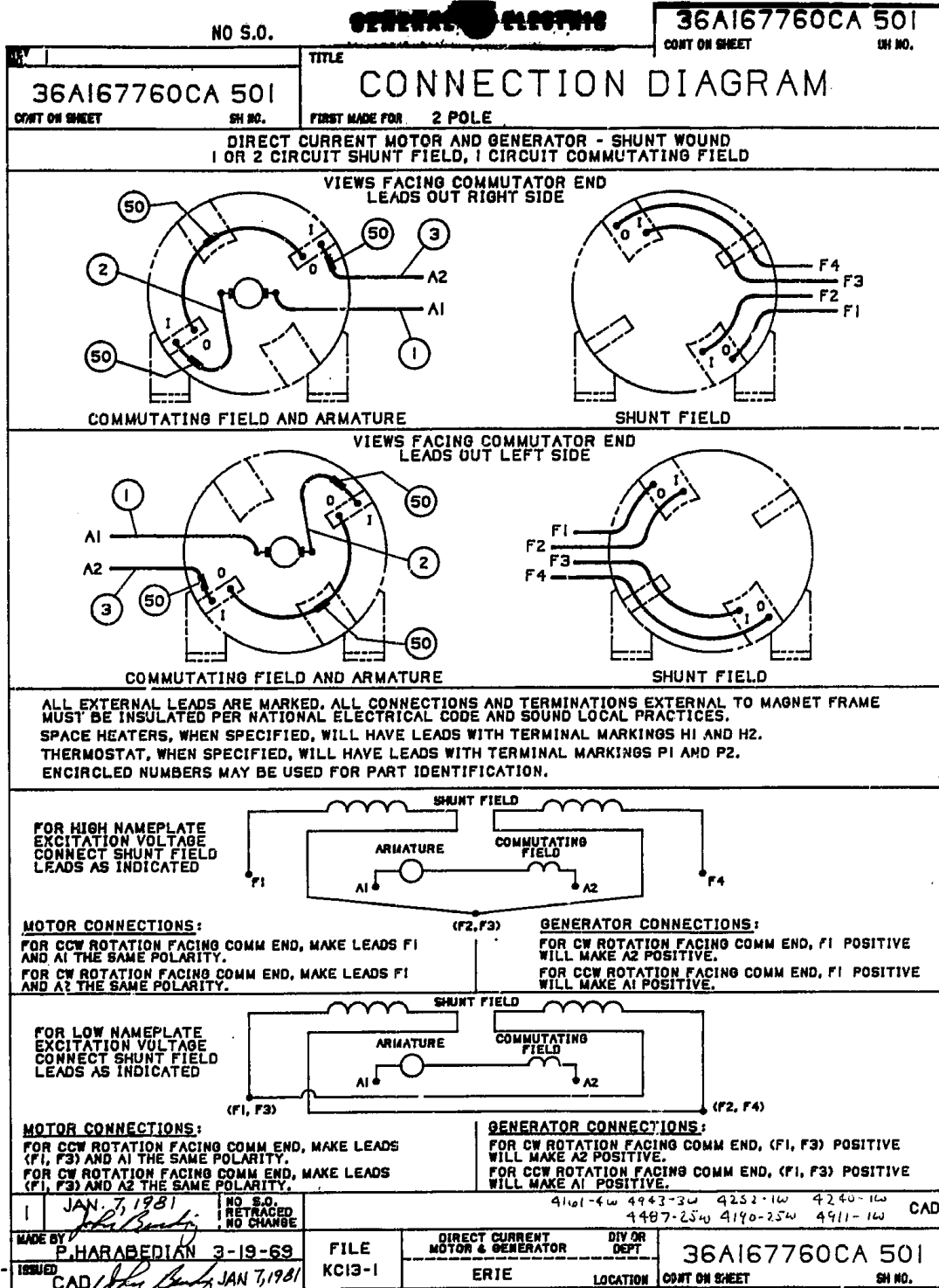
DRIPPROOF FULLY GUARDED, SEPARATELY VENTILATED
 - BALL BEARINGS
 CONDUIT BOX ON RIGHT HAND SIDE FACING COMMUTATOR END
 STANDARD SHAFT DRIVE END ONLY - WITH FEET
 SEPARATELY VENTILATED AT 90 CFM
 PRESSURE DROP AT .4 INCHES OF WATER
 WITH:
 CSA STAMP
 THERMOSTAT- NORMALLY CLOSED, AC RATING- 600V MAX-
 .5A, 250V-1.5A, OR 125V-3A, DC RATING- 30V MAX-
 1.5A.MAXIMUM CURRENT BASED ON INDUCTIVE LOADS UP
 TO AND INCLUDING NEMA NO.5 CONTACTOR.

Marks:



NAME:20800954 OBJ:5CD153JA001B106 DATE:17-Dec-07 15:40:16

Marks:



DGRM 36A167760CA501R01
PLT .64 SCL