

Product Information Packet

November 9, 2016

Data shown is for the current revision model #. Ensure your nameplate model # matches.

Model Number:	5KS286STE305A
Catalog Number:	M7548
Instruction Manual:	GEI-M1031
Connection Diagram:	GEM2034E-FIG210
Outline Drawing:	358B6273AC

Accessory Connection Diagrams

Bearing Thermocouple:	None	Heater:	None
RTD:	None	Thermistor:	None
Thermostat:	None	Winding Thermocouple:	None
Bearing RTD:	None		

Table of Contents

Specification	01
Performance Characteristics	02
Outline Drawing	03
Connection Drawing(s)	04



Marks:

MODEL NUMBER:	5KS286STE305A	Estimated Weight:	373 Lbs
Outline Drawing:	358B6273AC	Time Rating:	CONT
Connection Diagram:	GEM2034E-FIG210	Enclosure:	TEFC
Instruction Book:	GEI-M1031	Encl Construction:	SD
Design Code:	28AD3002A	Ambient Max(°C):	40
Type:	KS	Alt Ambient Max(°C):	--
Frame:	286T	Insulation Class:	F
Phases:	3	NEMA Design:	B
Poles:	6	Nominal Efficiency:	91.7 %
Output Power:	20HP 14.8KW	Guaranteed Efficiency:	90.2
RPM:	1170	3/4 Load Efficiency:	92.5
Voltage:	230/460	KVA Code:	G
Hertz:	60	Max KVAR:	5.3
Amps - FL:	49.0/24.5	Power Factor:	83.5
Service Factor:	1.15	Bearing - DE:	6310ZZ
Alt Service Factor:	--	Bearing - ODE:	6210ZZ

Enclosure is Totally Enclosed Fan-Cooled

Stamped Nameplate Notes:

6 POLE, TEFC,
 IP54;IBM3; MASS 169KG; MIN AMB -15C; MAX ALT 1000M
 USABLE AT 200V @ 20 HP, 54.2 AMPS @ 1.0 SF
 50HZ DATA @ 1.15 SF: 15.0/11.2 HP,
 200/400V, 47.0/23.5 AMPS: 50HZ DATA @ 1.00 SF
 20.0/14.9 HP, 200/400V, 56.2/28.1 AMPS
 GREASE TYPE: SHELL ALVANIA R3 LITHIUM GREASE

Additional Information:

6 POLE, TEFC,
 DUAL DIMENSION OUTLINE, IP54
 NO. OF MOTOR LEADS: 12
 CONDUIT BOX VOLUME (CU IN): 272.9
 CONDUIT BOX MATERIAL: CAST IRON
 SUITABLE FOR USE IN CLASS I DIVISION 2 LOCATIONS
 CLASS I DIVISION 2 GROUPS A,B,C,D T3C
 CLASS I ZONE 2 IIC T3C

Performance Characteristics

1st Winding 1st Connection

Design: 28AD3002A

Marks:

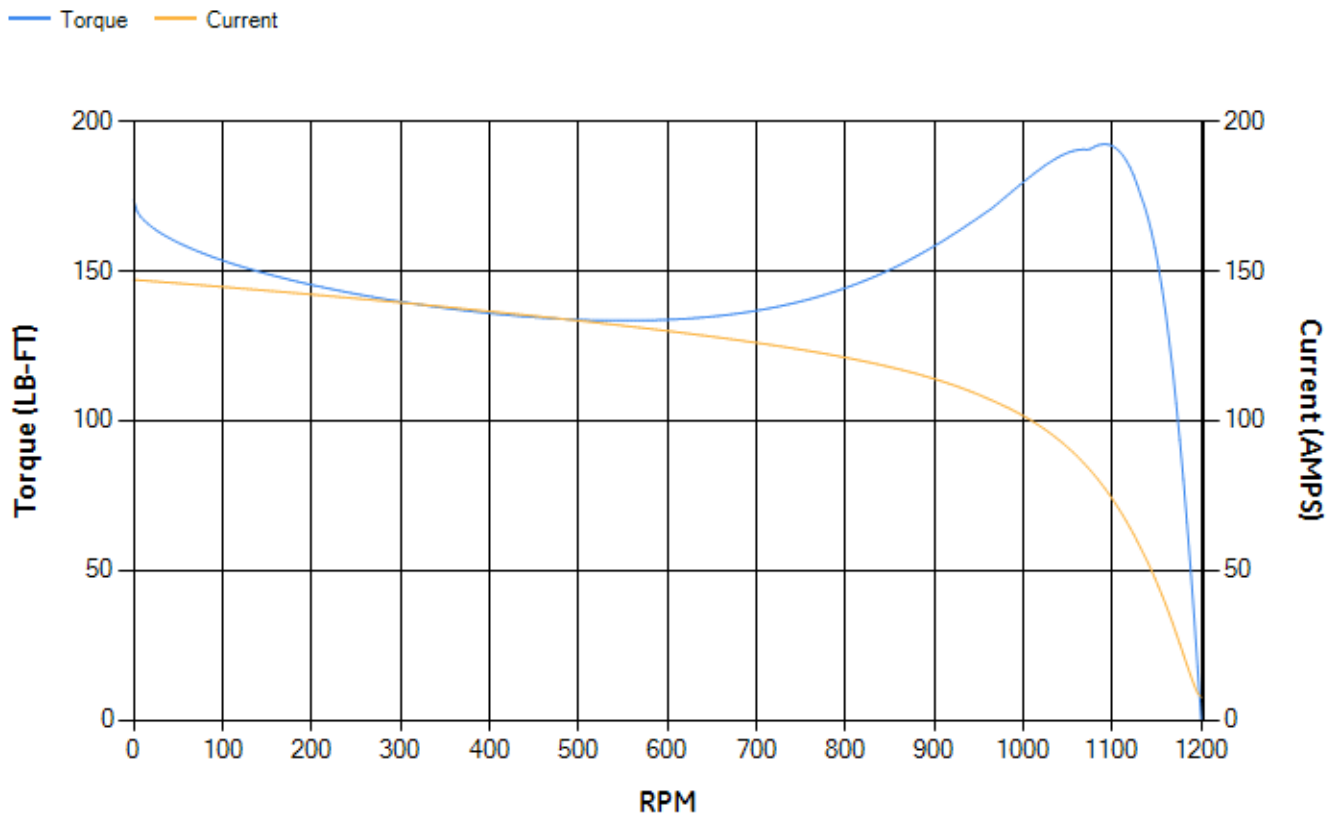
LOAD %	125.0	115.0	100.0	75.0	50.0	25.0	0.0
% EFF	89.33	90.12	91.35	92.5	93.12	91.52	0.00
% PF	86.18	86.04	85.36	82.32	74.4	53.39	4.26
AMPS	30.39	27.76	24.01	18.44	13.51	9.58	7.59

TORQ(FL)#FT	89.75	TORQ(LR)%FL	193.53	TORQ(BD)%FL	210.7
AMPS(LR)	147.07	PF AT START	0.39		

This motor is capable of two cold or one hot start with a maximum connected load inertia of 745 Lb-Ft Sq (31.36 Kg-meter Sq)at 100% voltage, where the load torque varies with the square of the speed. Acceleration time with maximum inertia and the above load type is 24 seconds. Safe stall time at 100% voltage is 72 seconds cold, 41 seconds hot. Rotor inertia is 6.62 Lb-Ft Sq (0.28 Kg-meter Sq).

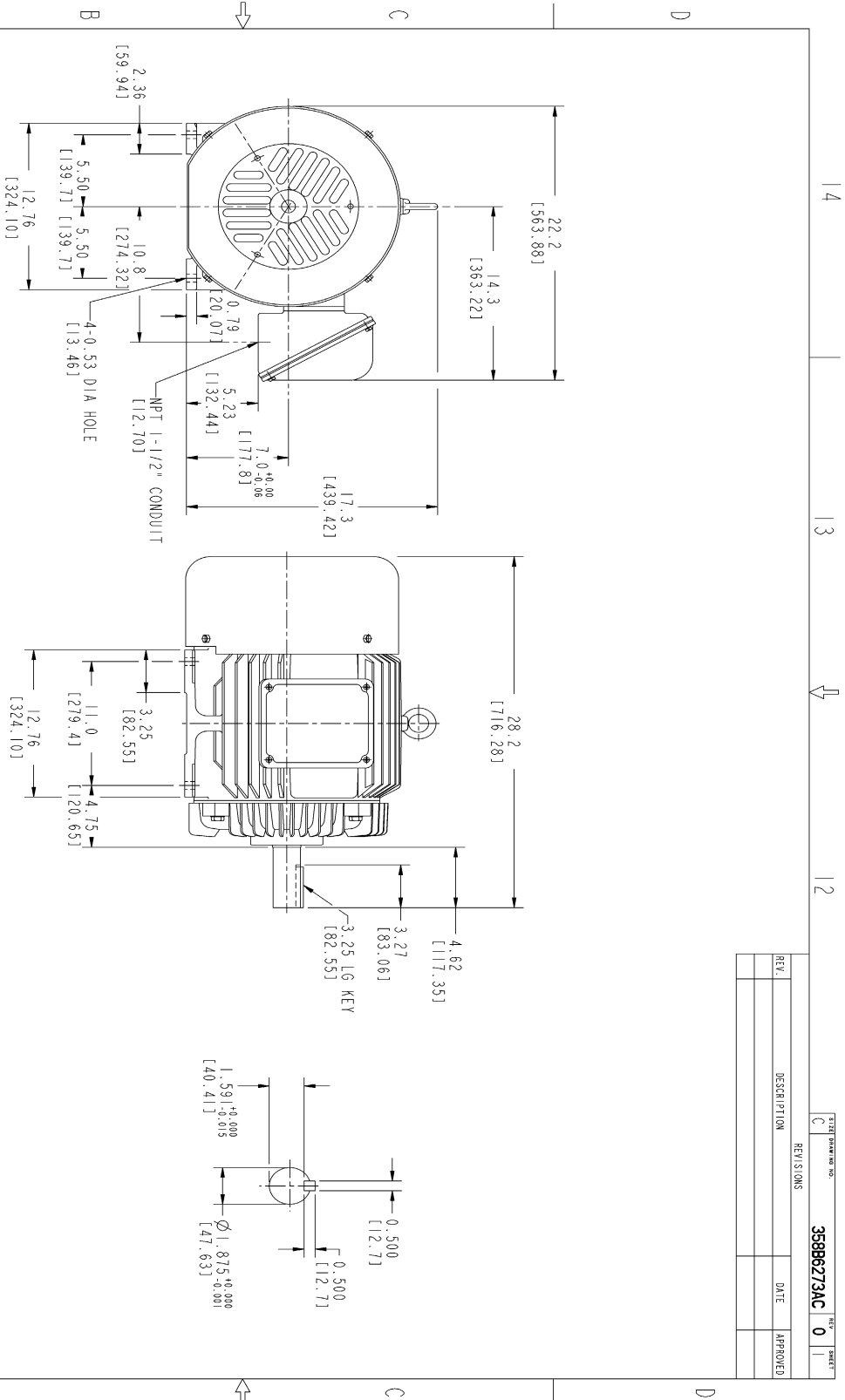
Open Circuit A-C:	0.342	Short Circuit D-C:	0.011
Short Circuit A-C:	0.016	X/R Ratio:	4.309
Stator Slots:	72	Rotor Slots:	60

Speed Torque Current Curve (First Connection, First Speed)



NAME:501291659 OBJECT:358B6273AC DATE:05-Dec-07 09:46:55

Marks:



- NOTES :
- 1. DIMENSIONS ARE IN INCHES.
 - 2. F-1 ASM AS SHOWN.
 - 3. F-2 ASM - HAS CONDUIT BOX ON OPPOSITE SIDE.
 - 4. BRACKETED DIMENSIONS ARE METRIC (MILLIMETERS)
 - 5. IC411, IP54, IMB34 APPLY



THIRD ANGLE PROJECTION

FOR ADDITIONAL INFO REFER TO:		SIGNATURES	DATE
REFLECTED DIMENSIONS	DETAIL		
QUANTITIES SPECIFIED	QUANTITY		
DIMENSIONS IN INCHES	CONVERT TO METRIC		
CONVERT TO METRIC	CONVERT TO METRIC		
TOLERANCE ON FRACTIONS ±	CONVERT TO METRIC		
2 P.L. DECIMALS ±	CONVERT TO METRIC		
3 P.L. DECIMALS ±	CONVERT TO METRIC		
ANGLES ±	CONVERT TO METRIC		
FRACTIONS ±	CONVERT TO METRIC		

TITLE	GENERAL ELECTRIC COMPANY
DRAWN BY	FTD - 286T TERC CE MARK
CHECKED BY	2729 CU IN CONDUIT BOX
DATE	11/13/07
SHEET	0
OF	1

REV.	DESCRIPTION	DATE	APPROVED

STANDARD NO. 358B6273AC REV. 0 SHEET 1 OF 1

1 4

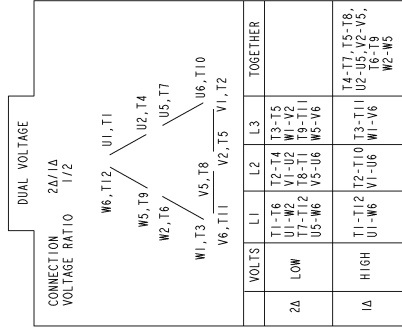
1 3

1 2

1 1

Marks:

Connection Diagram
GEM2034E-FIG210



NAME:501452353 OBJECT:GEM2034E-FIG210 DATE:25-Feb-08 14:03:35