

Product Information Packet

November 7, 2016

Data shown is for the current revision model #. Ensure your nameplate model # matches.

| | |
|----------------------------|--------------------------|
| Model Number: | 5KS215ATE205F2RG3 |
| Catalog Number: | E7063 |
| Instruction Manual: | GEI-M1023 |
| Connection Diagram: | GEM2034E-FIG10 |
| Outline Drawing: | 358B6215AE |

| Accessory Connection Diagrams | | | |
|-------------------------------|------|------------------------------|------|
| Bearing Thermocouple: | None | Heater: | None |
| RTD: | None | Thermistor: | None |
| Thermostat: | None | Winding Thermocouple: | None |
| Bearing RTD: | None | | |

| Table of Contents | |
|-----------------------------|----|
| Specification | 01 |
| Performance Characteristics | 02 |
| Outline Drawing | 03 |
| Connection Drawing(s) | 04 |

Marks:

| | | | |
|----------------------------|--------------------------|-------------------------------|---------|
| MODEL NUMBER: | 5KS215ATE205F2RG3 | Estimated Weight: | 156 Lbs |
| Outline Drawing: | 358B6215AE | Time Rating: | CONT |
| Connection Diagram: | GEM2034E-FIG10 | Enclosure: | DP |
| Instruction Book: | GEI-M1023 | Encl Construction: | OPEN |
| Design Code: | 21AD1007A | Ambient Max(°C): | -20/40 |
| Type: | KS | Alt Ambient Max(°C): | -- |
| Frame: | 215T | Insulation Class: | F |
| Phases: | 3 | NEMA Design: | A |
| Poles: | 4 | Nominal Efficiency: | 91.7 % |
| Output Power: | 10HP 7.4KW | Guaranteed Efficiency: | 90.2 |
| RPM: | 1760 | 3/4 Load Efficiency: | 92.5 |
| Voltage: | 230/460 | KVA Code: | J |
| Hertz: | 60 | Max KVAR: | 3.5 |
| Amps - FL: | 24.8/12.4 | Power Factor: | 82 |
| Service Factor: | 1.15 | Bearing - DE: | 6308ZZ |
| Alt Service Factor: | -- | Bearing - ODE: | 6208ZZ |

Enclosure is Dripproof

Stamped Nameplate Notes:**Additional Information:**

MADE FROM MODEL 5KS215ATE205F2
 ADD AEGIS GROUND RING
 MOD AMSTUTZ 15-NOV-2011

Performance Characteristics

1st Winding 1st Connection

Design: 21AD1007A

Marks:

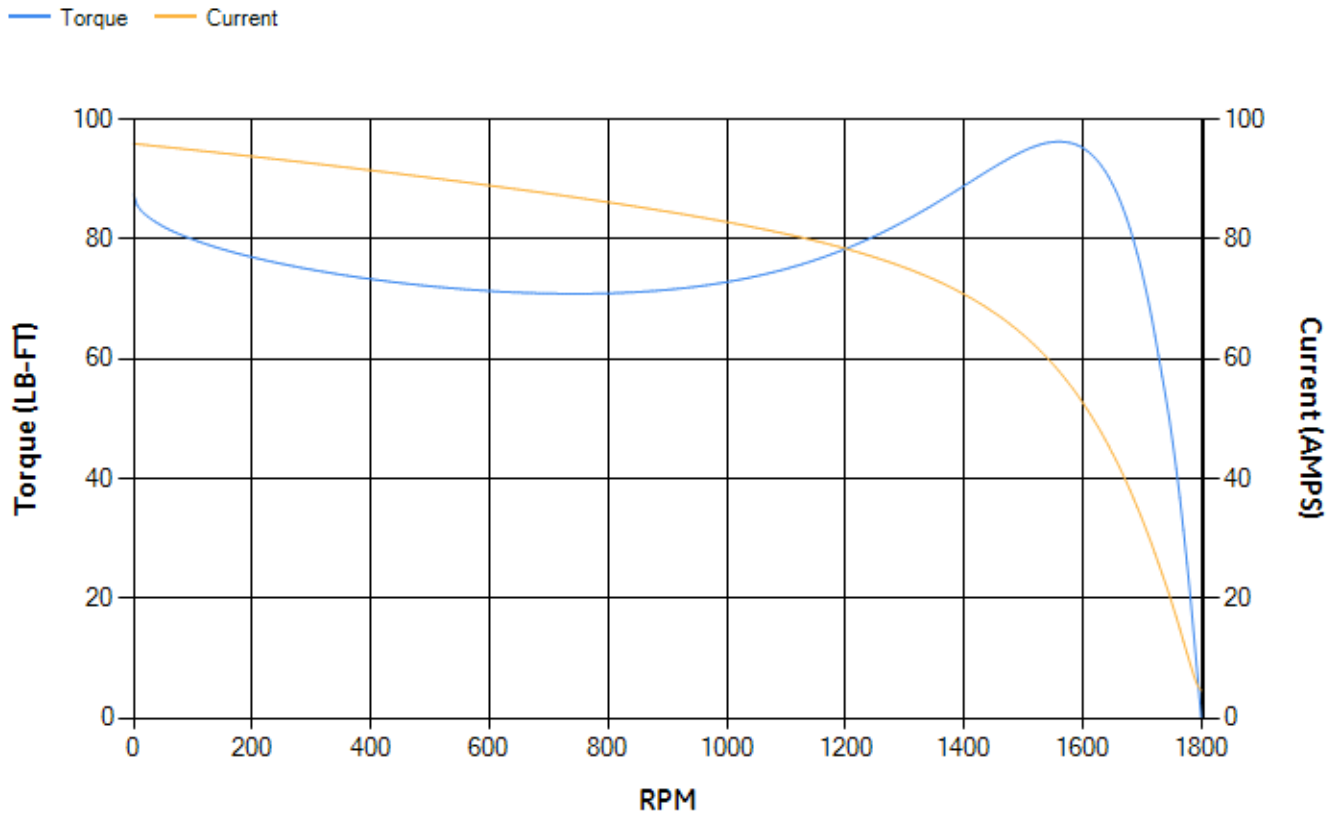
| LOAD % | 125.0 | 115.0 | 100.0 | 75.0 | 50.0 | 25.0 | 0.0 |
|--------|-------|-------|-------|-------|-------|-------|------|
| % EFF | 90.78 | 91.26 | 92.07 | 92.49 | 92.2 | 88.85 | 0.00 |
| % PF | 84.6 | 84.19 | 83.04 | 78.98 | 69.65 | 48.11 | 5.41 |
| AMPS | 15.23 | 14.01 | 12.24 | 9.61 | 7.29 | 5.47 | 4.57 |

| | | | | | |
|--------------------|-------|--------------------|--------|--------------------|--------|
| TORQ(FL)#FT | 29.75 | TORQ(LR)%FL | 293.98 | TORQ(BD)%FL | 320.63 |
| AMPS(LR) | 95.93 | PF AT START | 0.44 | | |

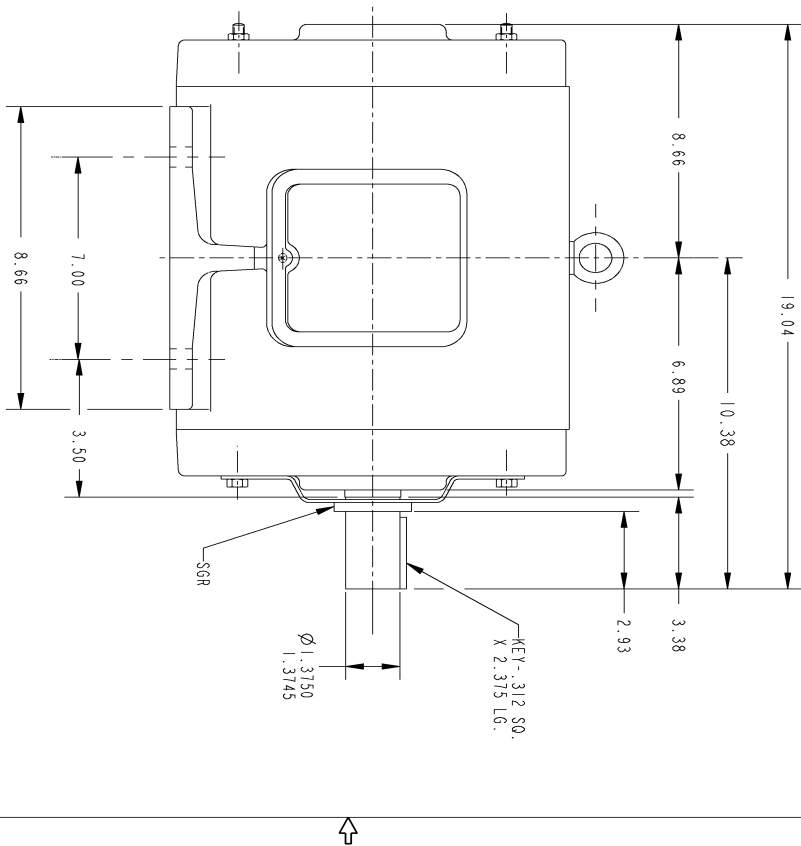
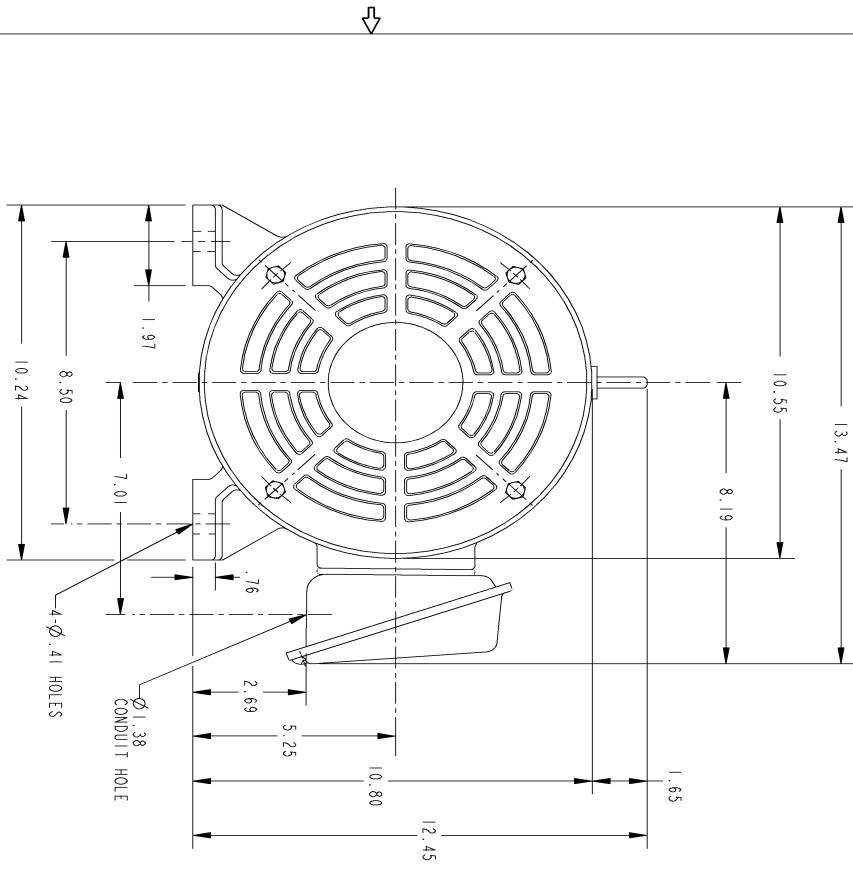
This motor is capable of two cold or one hot start with a maximum connected load inertia of 321 Lb-Ft Sq (13.51 Kg-meter Sq) at 100% voltage, where the load torque varies with the square of the speed. Acceleration time with maximum inertia and the above load type is 28 seconds. Safe stall time at 100% voltage is 69 seconds cold, 44 seconds hot. Rotor inertia is 1.01 Lb-Ft Sq (0.04 Kg-meter Sq).

| | | | |
|---------------------------|-------|---------------------------|-------|
| Open Circuit A-C: | 0.355 | Short Circuit D-C: | 0.011 |
| Short Circuit A-C: | 0.015 | X/R Ratio: | 4.145 |
| Stator Slots: | 48 | Rotor Slots: | 40 |

Speed Torque Current Curve (First Connection, First Speed)



Marks:

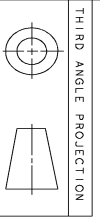


GE PROPRIETARY INFORMATION
 This document is the property of General Electric Company ("GE") and contains proprietary information of GE. This document is issued as the express condition that neither it nor the information contained herein shall be disclosed to any third party without the prior written consent of GE. This information shall be used only as approved expressly by GE. This information shall be returned to GE upon its request. This document is subject to standard restrictions under U.S. Export Control and regulations.

| REV. | DESCRIPTION | DATE | APPROVED |
|------|-------------|------|----------|
| | | | |

| | | | | | | |
|-------------------|---|------------|-----|---|-------|---|
| SIZE: DRAWING NO. | B | 358B6215AE | REV | 0 | SHEET | 1 |
| REVISIONS | | | | | | |

- NOTES :
- CONDUIT BOX MAY BE PLACED WITH THE ENTRANCE DOWN, UP OR ON EITHER SIDE.
 - F-1 ASM AS SHOWN.
 - F-2 ASM - HAS CONDUIT BOX ON OPPOSITE SIDE.



| | | | |
|---------------------------------|----------|--------------------------|--------------|
| SIGNATURES | | DATE | |
| MODEL | SHANKAR | 07/14/11 | |
| DETAIL | VENKAT.J | 07/14/11 | |
| CHECKED | VENKAT.J | 07/14/11 | |
| ENGR | VENKAT.J | 07/14/11 | |
| WEG | | | |
| QUALITY | SHANKAR | 07/14/11 | |
| ISSUED | | | |
| SOLID MODEL MODEL NAME | | | |
| TITLE | | GENERAL ELECTRIC COMPANY | |
| OUTLINE | | | |
| 21ST - OPEN DRIP PROOF WITH SGR | | | |
| SIZE: DRAWING | B | 358B6215AE | REV |
| SCALE: DRAWING SCALE | | | 0 |
| | | | SHEET 1 of 1 |

Marks:

Connection Diagram
GEM2034E-FIG10

