

# Product Information Packet

November 9, 2016

Data shown is for the current revision model #. Ensure your nameplate model # matches.

<b>Model Number:</b>	<b>5KS145STE209A</b>
<b>Catalog Number:</b>	<b>M7724</b>
<b>Instruction Manual:</b>	GEI-M1031
<b>Connection Diagram:</b>	GEM2034E-FIG203
<b>Outline Drawing:</b>	358B6269AC

Accessory Connection Diagrams			
<b>Bearing Thermocouple:</b>	None	<b>Heater:</b>	None
<b>RTD:</b>	None	<b>Thermistor:</b>	None
<b>Thermostat:</b>	None	<b>Winding Thermocouple:</b>	None
<b>Bearing RTD:</b>	None		

Table of Contents	
Specification	01
Performance Characteristics	02
Outline Drawing	03
Connection Drawing(s)	04

**Marks:**

<b>MODEL NUMBER:</b>	<b>5KS145STE209A</b>	<b>Estimated Weight:</b>	62 Lbs
<b>Outline Drawing:</b>	358B6269AC	<b>Time Rating:</b>	CONT
<b>Connection Diagram:</b>	GEM2034E-FIG203	<b>Enclosure:</b>	TEFC
<b>Instruction Book:</b>	GEI-M1031	<b>Encl Construction:</b>	SD
<b>Design Code:</b>	14AD1012A	<b>Ambient Max(°C):</b>	40
<b>Type:</b>	KS	<b>Alt Ambient Max(°C):</b>	--
<b>Frame:</b>	145T	<b>Insulation Class:</b>	F
<b>Phases:</b>	3	<b>NEMA Design:</b>	B
<b>Poles:</b>	4	<b>Nominal Efficiency:</b>	86.5 %
<b>Output Power:</b>	1.5HP 1.1KW	<b>Guaranteed Efficiency:</b>	84.0
<b>RPM:</b>	1745	<b>3/4 Load Efficiency:</b>	88.5
<b>Voltage:</b>	230/460	<b>KVA Code:</b>	M
<b>Hertz:</b>	60	<b>Max KVAR:</b>	0.8
<b>Amps - FL:</b>	4.2/2.1	<b>Power Factor:</b>	77
<b>Service Factor:</b>	1.15	<b>Bearing - DE:</b>	6205ZZC3
<b>Alt Service Factor:</b>	--	<b>Bearing - ODE:</b>	6205ZZC3

**Enclosure is Totally Enclosed Fan-Cooled**

---

**Stamped Nameplate Notes:**

USABLE AT 200V @ 1.5 HP, 4.5 AMPS @ 1.0 SF

LRA: 33.4/16.7

50HZ DATA: 1.0 HP,200/400V, 3.8/1.9 AMPS @ 1.15 SF

50HZ DATA: 1.5HP, 200/400V,4.8/2.4 AMPS @ 1.00 SF

GREASE TYPE: SHELL ALVANIA R3 LITHIUM GREASE

**Additional Information:**

CONDUIT BOX MATERIAL: CAST IRON

SUITABLE FOR USE IN CLASS I DIVISION 2 LOCATIONS

CLASS I DIVISION 2 GROUPS A,B,C,D T3C

CLASS I ZONE 2 IIC T3C



**Performance Characteristics**

1st Winding 1st Connection

**Design: 14AD1012A**

Marks:

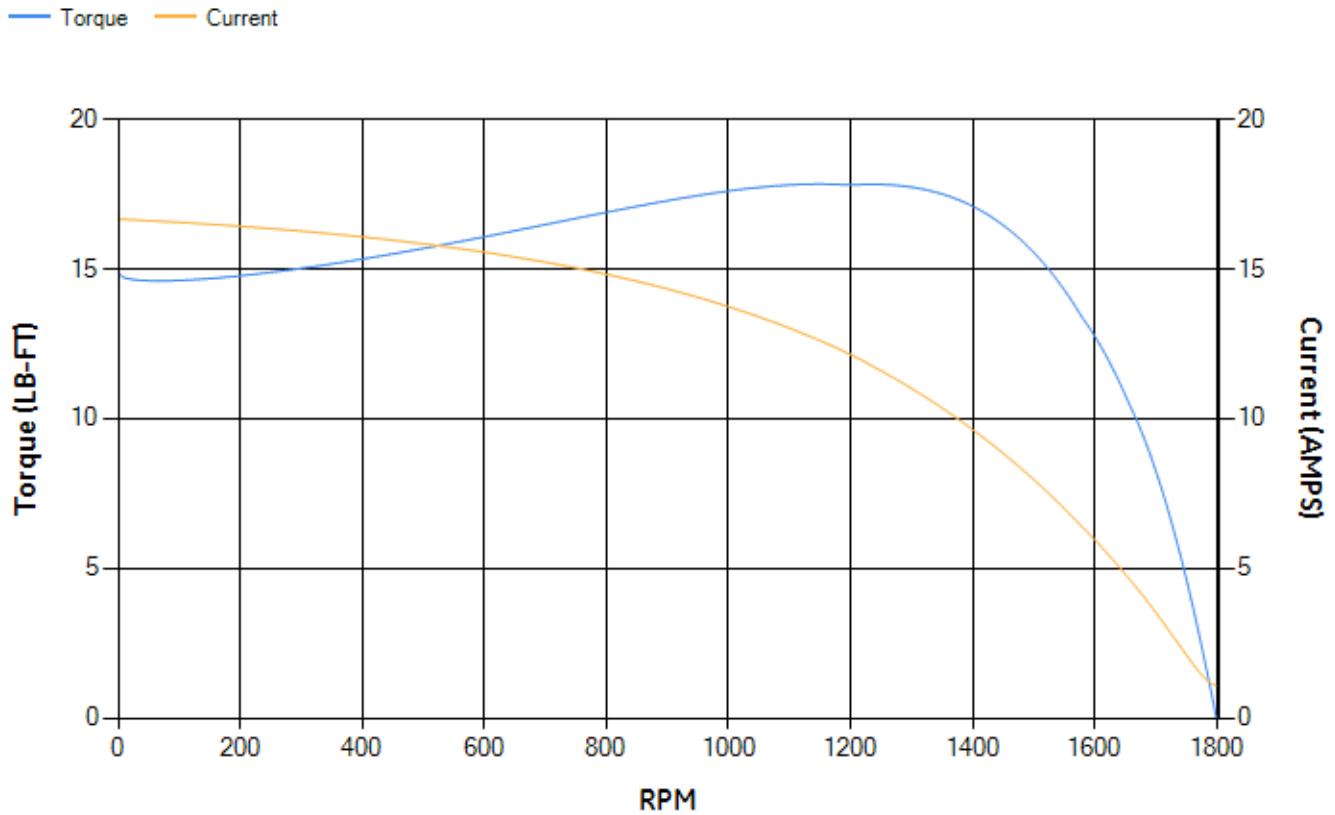
LOAD %	125.0	115.0	100.0	75.0	50.0	25.0	0.0
% EFF	87.41	87.84	88.52	88.48	87.09	80.6	0.00
% PF	80.97	79.64	76.97	69.86	57.41	36.61	6.85
AMPS	2.48	2.31	2.06	1.7	1.4	1.19	1.09

TORQ(FL)#FT	4.52	TORQ(LR)%FL	329.44	TORQ(BD)%FL	388.6
AMPS(LR)	16.67	PF AT START	0.55		

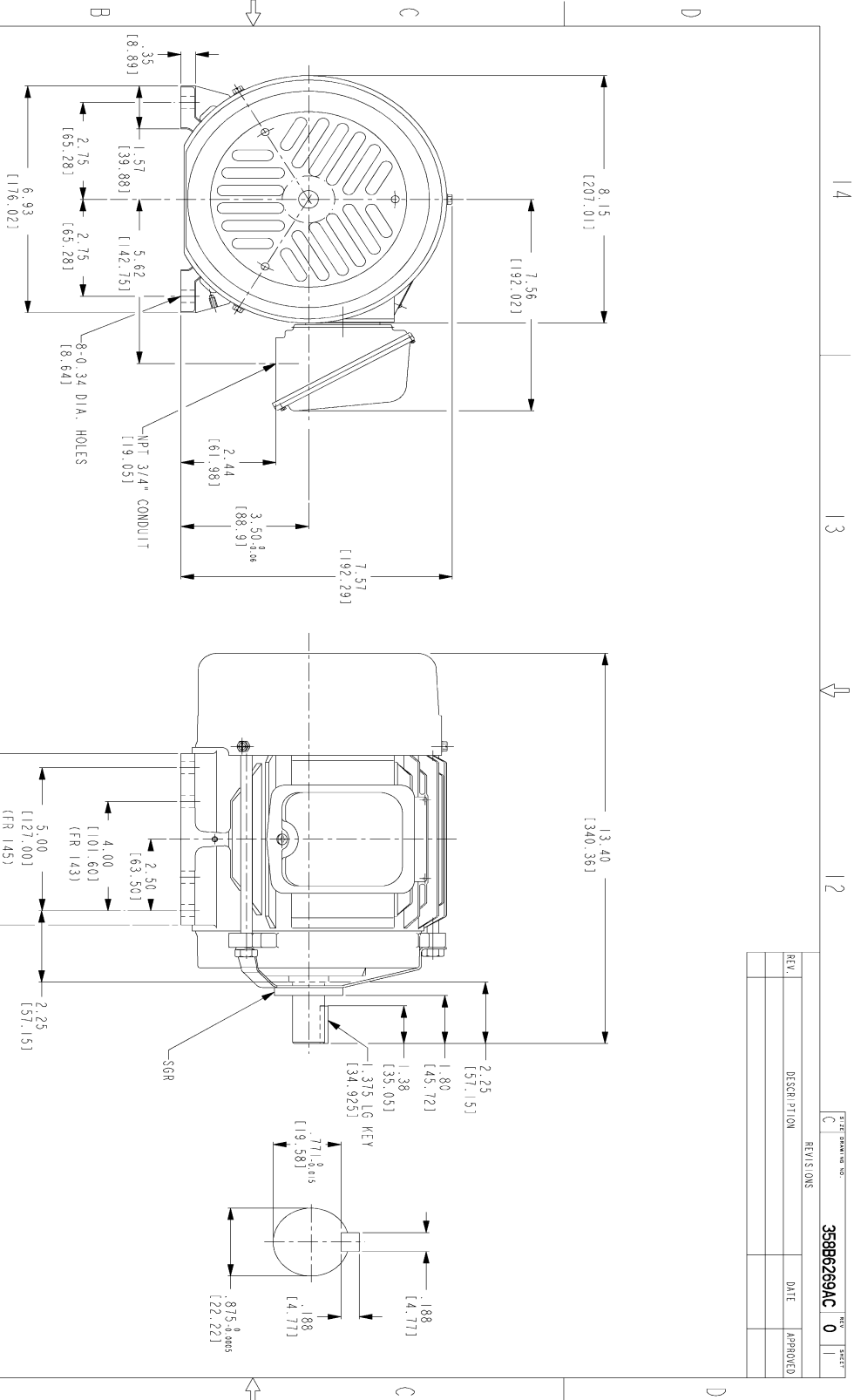
This motor is capable of two cold or one hot start with a maximum connected load inertia of 78 Lb-Ft Sq (3.28 Kg-meter Sq)at 100% voltage, where the load torque varies with the square of the speed. Acceleration time with maximum inertia and the above load type is 32 seconds. Safe stall time at 100% voltage is 75 seconds cold, 58 seconds hot. Rotor inertia is 0.11 Lb-Ft Sq (0 Kg-meter Sq).

Open Circuit A-C:	0.144	Short Circuit D-C:	0.007
Short Circuit A-C:	0.007	X/R Ratio:	2.637
Stator Slots:	36	Rotor Slots:	28

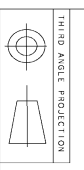
**Speed Torque Current Curve (First Connection, First Speed)**



Marks:



- NOTES:
1. DIMENSIONS ARE IN INCHES.
  2. F-1 ASM AS SHOWN.
  3. F-2 ASM - HAS CONDUIT BOX ON OPPOSITE SIDE.
  4. BRACKETED DIMENSIONS ARE METRIC (MILLIMETERS)
  5. IC411, IP34, IMB34 APPLY.

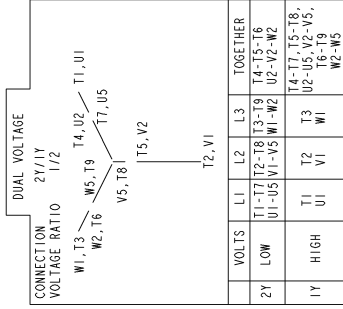


REV.	DESCRIPTION	DATE	APPROVED

MODEL	SIGNATURES	DATE	 <b>GENERAL ELECTRIC COMPANY</b>
SCALE	SHANKAR	06/24/11	
DESIGN	VENKAT	06/24/11	<b>OUTLINE</b> FTD - 143T/145T TFC CE MARK WITH SGR 471 CU IN CONDUIT BOX <b>358B6269AC</b>
CHKD	VENKAT	06/24/11	
DATE	VENKAT	06/24/11	
ISSUED	SHANKAR	06/24/11	
SCALE: DRAWING SCALE	C	SCALE: MODEL NAME	REV
			0
			SHEET 1 OF 1

Marks:

**Connection Diagram**  
**GEM2034E-FIG203**



NAME: 500903578 OBJECT: GEM2034E-FIG203 DATE: 03-Nov-06 13:53:10