

Product Information Packet

January 12, 2017

Data shown is for the current revision model #. Ensure your nameplate model # matches.

Model Number:	5KGS449SAA222D2
Catalog Number:	M8998
Instruction Manual:	GEI-56128
Connection Diagram:	GEM2034E-FIG25
Outline Drawing:	239C6800FR

Accessory Connection Diagrams			
Bearing Thermocouple:	None	Heater:	None
RTD:	None	Thermistor:	None
Thermostat:	3027JE-2A	Winding Thermocouple:	None
Bearing RTD:	None		

Table of Contents

Specification	01
Performance Characteristics	02
Outline Drawing	03
Connection Drawing(s)	04
Spare parts	05



Marks:

MODEL NUMBER:	5KGS449SAA222D2	Estimated Weight:	3050 Lbs
Outline Drawing:	239C6800FR	Time Rating:	CONT
Connection Diagram:	GEM2034E-FIG25	Enclosure:	TEFC
Instruction Book:	GEI-56128	Encl Construction:	X\$D
Design Code:	49BD1266A	Ambient Max(°C):	40
Type:	KGS	Alt Ambient Max(°C):	--
Frame:	449T	Insulation Class:	H
Phases:	3	NEMA Design:	B
Poles:	4	Nominal Efficiency:	96.2 %
Output Power:	250HP 185KW	Guaranteed Efficiency:	95.8
RPM:	1780	3/4 Load Efficiency:	96.4
Voltage:	460	KVA Code:	G
Hertz:	60	Max KVAR:	64.3
Amps - FL:	278.0	Power Factor:	87.5
Service Factor:	1.15	Bearing - DE:	NU 318
Alt Service Factor:	--	Bearing - ODE:	6318ZC3

Enclosure is Totally Enclosed Fan-Cooled

Stamped Nameplate Notes:

ROLLER BEARING - FOR BELTED LOAD ONLY
 THERMOSTAT LEADS TB1-TB2 TRIP
 STAMP NP249A5564P051 AS BELOW:
 MODEL:5KGS449SAA222D2 S/N: XXX
 CSA CERTIFIED CSA09.2216219 FOR EX NA IIC 215 C GC
 CL 1 ZONE2 AEX NA IIC ---C;CL 1 DIV2 GRP ABCD 215C
 IN -40C <= AMB <= 40C, 1.0 SF ON SINE-WAVE PWR
 SURF TEMP 280C AT 1.15SF ON SINE-WAVE PWR
 OR 260C VT OR ---C CT OR ---C CHP PWM CONTROL
 ALTERNATE RATING FOR PWM CONTROL 1.0SF 40C AMB
 VT 0 - 60 HZ, CT -- HZ, CHP -- HZ.

Additional Information:

4P - T EXTN - SPLIT LEAD
 1260 CU IN - 2(4.00" NPT)
 C/B GRD PLATE
 OIL RESISTANT SLEEVING ON LEADS
 B5F4C4 HIGH FATIGUE STEEL AISI 4142 SHAFT MATERIAL
 N.C. TRIP TSTAT LDS TO MAIN CONDUIT BOX
 F1 MOUNTING
 CLASS F TEMP RISE AT 1.0 SF

Performance Characteristics

1st Winding 1st Connection

Design: 49BD1266A

Marks:

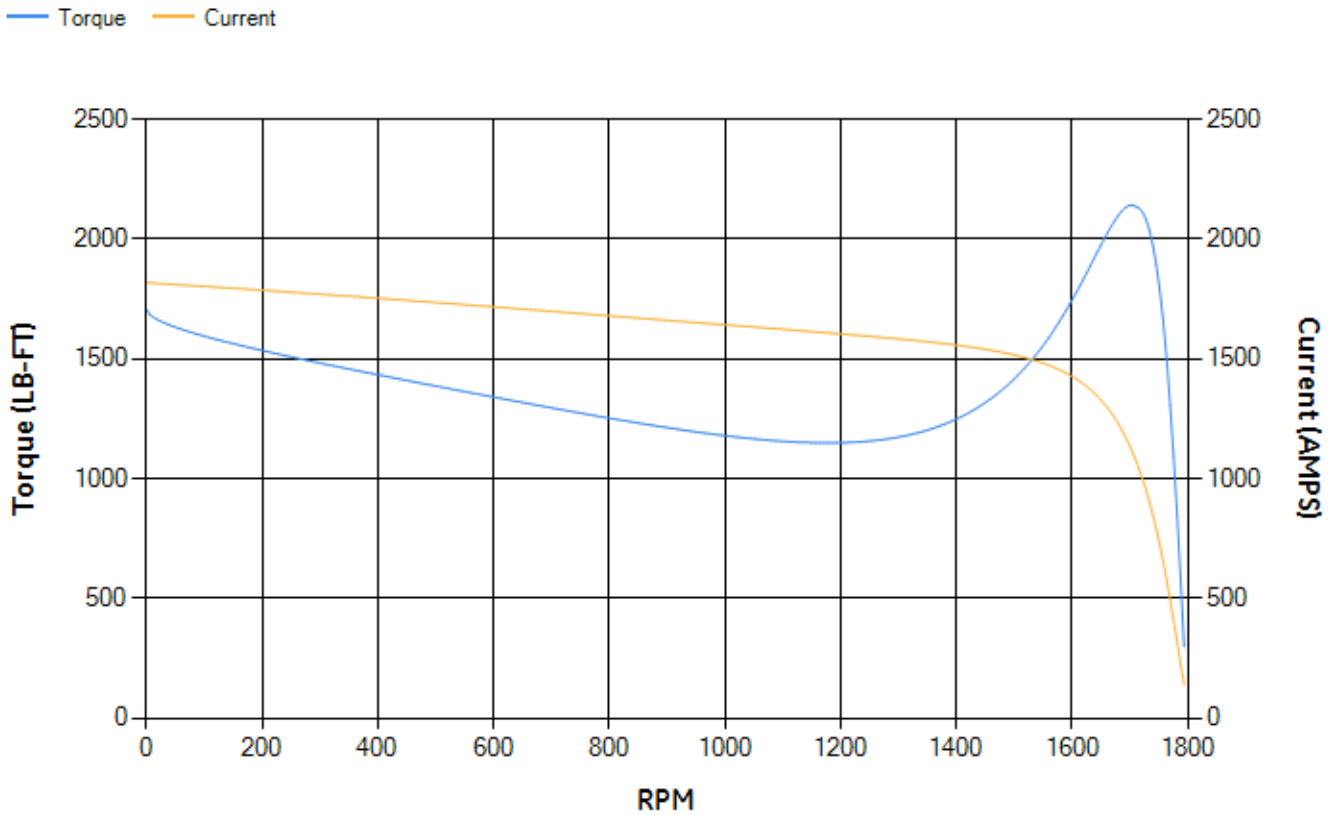
LOAD %	125.0	115.0	100.0	75.0	50.0	25.0	0.0
% EFF	95.67	95.87	96.33	96.4	96.24	94.59	0.00
% PF	88.43	88.16	87.35	84.28	76.46	55.05	3.13
AMPS	345.71	318.36	278.05	216	158.99	112.34	89.67

TORQ(FL)#FT	736.74	TORQ(LR)%FL	231.56	TORQ(BD)%FL	290.21
AMPS(LR)	1817.6	PF AT START	0.33		

This motor is capable of two cold or one hot start with a maximum connected load inertia of 4070 Lb-Ft Sq (171.35 Kg-meter Sq)at 100% voltage, where the load torque varies with the square of the speed. Acceleration time with maximum inertia and the above load type is 21 seconds. Safe stall time at 100% voltage is 58 seconds cold, 25 seconds hot. Rotor inertia is 133.5 Lb-Ft Sq (5.62 Kg-meter Sq).

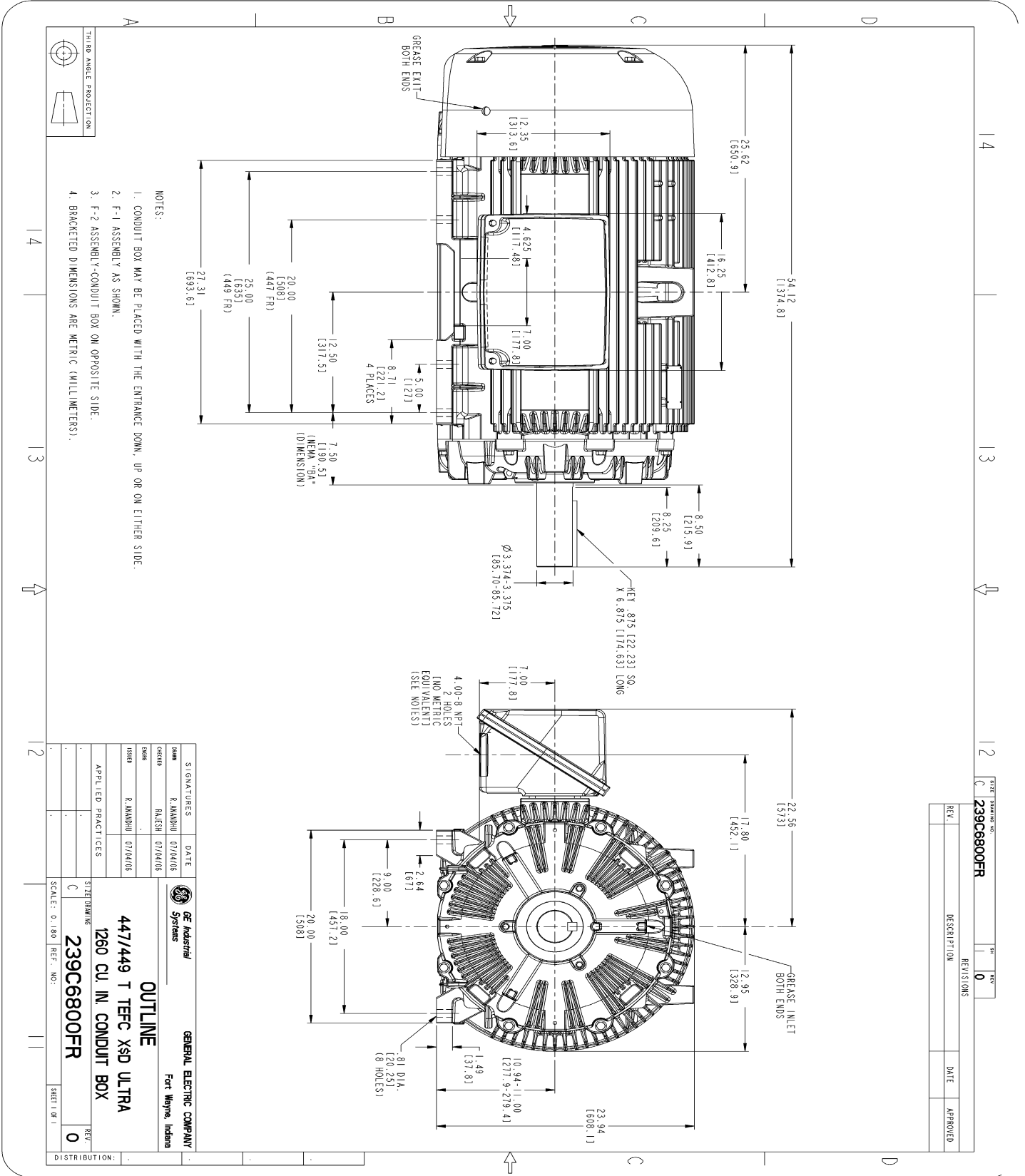
Open Circuit A-C:	0.78	Short Circuit D-C:	0.042
Short Circuit A-C:	0.034	X/R Ratio:	15.861
Stator Slots:	72	Rotor Slots:	58

Speed Torque Current Curve (First Connection, First Speed)



NAME: 501073830 OBJECT: 239C6800FR DATE: 05-Jul-06 15:15:17

Marks:



NOTES:

- CONDUIT BOX MAY BE PLACED WITH THE ENTRANCE DOWN, UP OR ON EITHER SIDE.
- F-1 ASSEMBLY AS SHOWN.
- F-2 ASSEMBLY-CONDUIT BOX ON OPPOSITE SIDE.
- BRACKETED DIMENSIONS ARE METRIC (MILLIMETERS).

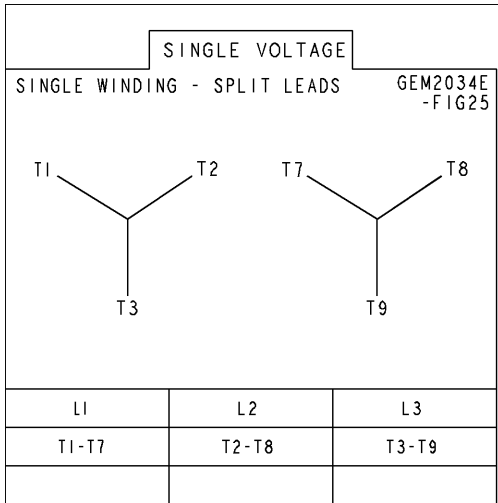
REV.	DESCRIPTION	DATE	APPROVED
0			

SIGNATURES	DATE	GENERAL ELECTRIC COMPANY
DWG: R. MANOHU	07/14/05	Fort Wayne, Indiana
CHKD: R. MANOHU	07/14/05	
DATE: 07/14/05		
APPLIED PRACTICES		
SCALE: 0.180	REF. NO.:	
SHEET 0F 1		

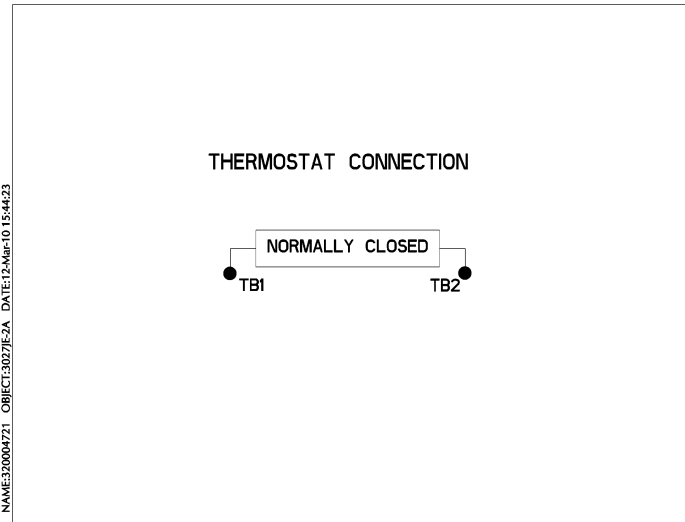
OUTLINE
 447/449 T TEFC XSD ULTRA
 1260 CU. IN. CONDUIT BOX
 239C6800FR

Marks:

Connection Diagram
GEM2034E-FIG25



Thermostat Connection
3027JE-2A



End shield Assembly		
Part Description	DE Side Part#	ODE Side Part#
End Shield	115E4355AA1	115E4355LL1
Bearing	235A2519AA01	235A2514AG01
Slinger/Inproseal	149C4399G07	149C4399G07

Fan & Fan Cover Assembly	
Part Description	Part#
Fan	159C7100AA2
Fan Cover	128D6841AA1

Conduit & Accessories Box Assembly	
Part Description	Part#
Conduit Box	179B9058G03

Mechanical Accessories	
Part Description	Part#
Brake	
Tachometer	