

Product Information Packet

November 7, 2016

Data shown is for the current revision model #. Ensure your nameplate model # matches.

Model Number:	5CD223SA074B133
Catalog Number:	D547
Instruction Manual:	GEH-3967N
Connection Diagram:	36A167910FA502
Outline Drawing:	36A167939AA003

Accessory Connection Diagrams			
Bearing Thermocouple:	None	Heater:	None
RTD:	None	Thermistor:	None
Thermostat:	None	Winding Thermocouple:	None
Bearing RTD:	None		

Table of Contents	
Specification	01
Outline Drawing	02
Connection Drawing(s)	03

Marks:

MODEL NUMBER:	5CD223SA074B133	Enclosure Mtg Assem:	36A167775AA001
Outline Drawing:	36A167939AA003	Instruction Book:	GEH-3967N
Connection Diagram:	36A167910FA502	RPM:	1750/1900
Horsepower:	250	Armature Amps:	394
Armature Volts:	500	Type:	CD506AT
Wound:	SHUNT	Power Supply Code:	C
Enclosure:	DPFG	Insulation Class:	F
Duty:	CONT	Ambient Max (°C):	40 C
Rating Code:	223S1160-01	Field Volts:	300/150
K(V):	2.68 Cemf volts/Radian/Sec	WK2:	99.00Lb Ft2
K(T):	1.90 Ft/Amp	Year of Manufacture:	2016
Minimum Ambient:	0 C	Max Altitude:	3300 Ft

Resistances at 25 Degrees C :

Shunt Field:	26.8 OHMS
Armature:	.0141 OHMS
Commutator Field:	.0040 OHMS

Inductances:

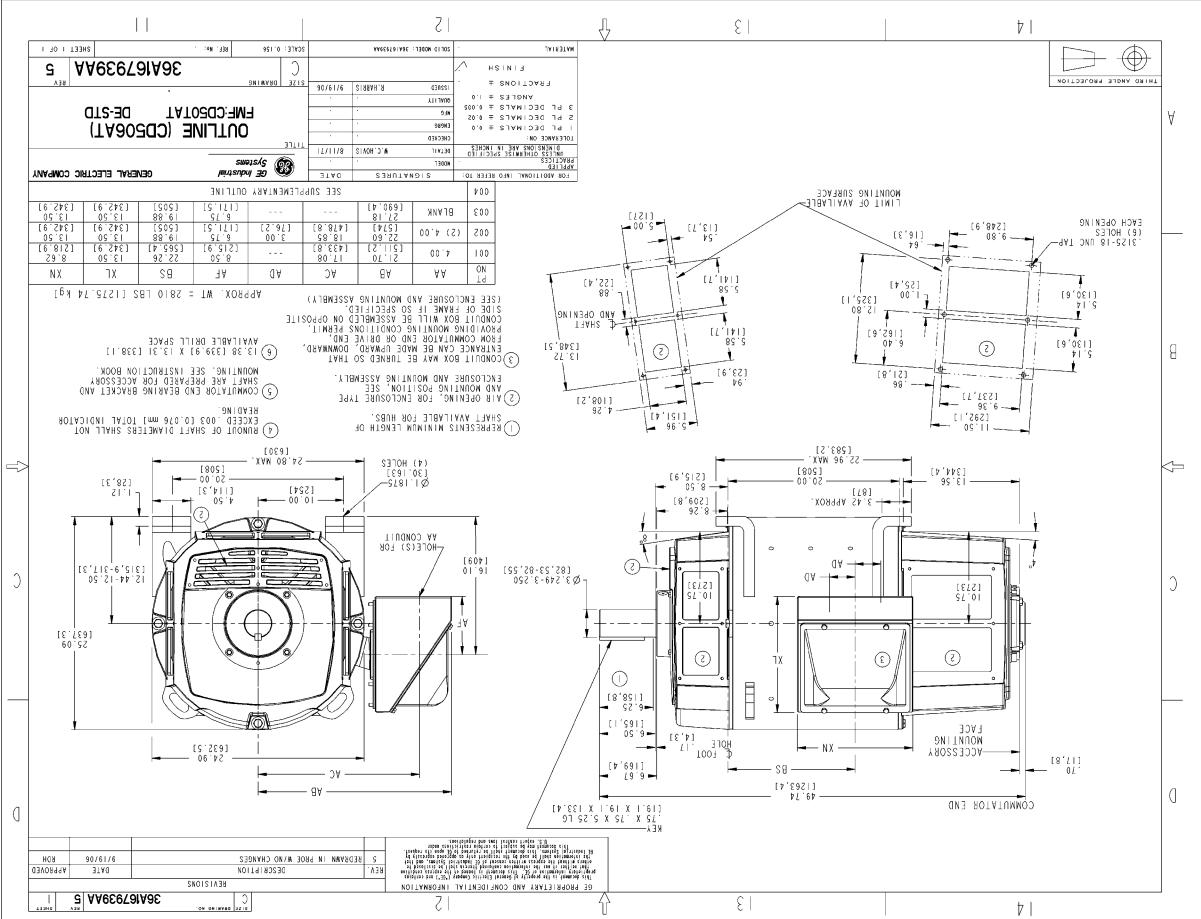
Armature Circuit Total:	.750 mH Saturated
Shunt Field:	30.0 Henries Unsaturated

Shunt Field Data:

Shunt Field Current(1): 8 AMPS at Rated Load and 1750 RPM
 Shunt Field Current(2): 7.51 AMPS at Rated Load and 1800 RPM
 Shunt Field Current(3): 6.68 AMPS at Rated Load and 1900 RPM

Additional Machine Notes:

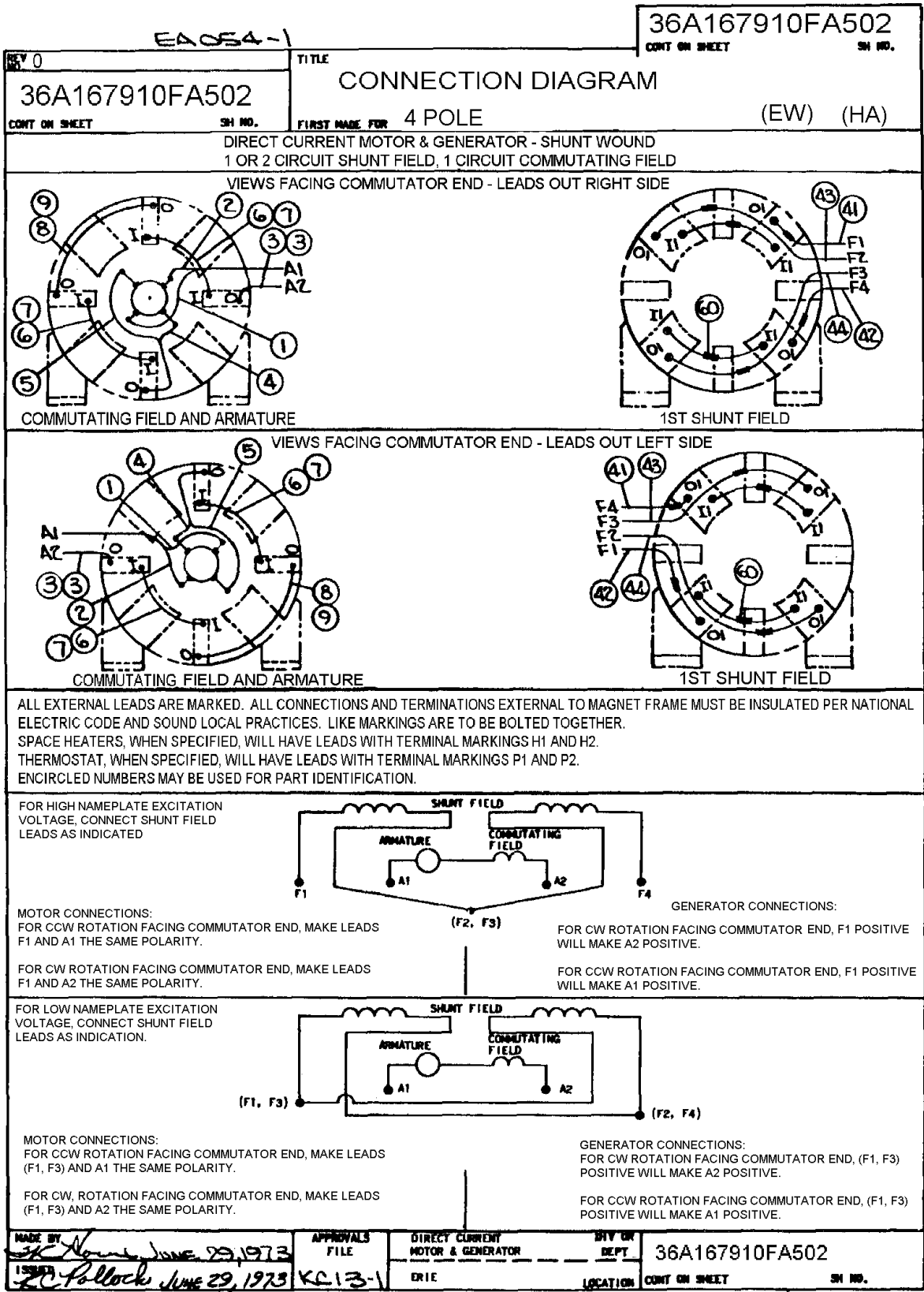
DRIPPROOF FULLY GUARDED - BALL BEARINGS
 CONDUIT BOX ON RIGHT HAND SIDE FACING COMMUTATOR END
 STANDARD SHAFT DRIVE END ONLY - WITH FEET
 WITH:
 CSA STAMP
 THERMOSTAT- NORMALLY CLOSED, AC RATING- 600V MAX-
 .5A, 250V-1.5A, OR 125V-3A- DC RATING- 30V MAX-
 1.5A. MAXIMUM CURRENT BASED ON INDUCTIVE LOADS UP
 TO AND INCLUDING NEMA NO. 5 CONTACTOR.



Notes:

NAME: 20080544 OBJECT: 36A167939AA DATE: 19 SEP 06 11:38:15

Marks:



DC 2-281 (2-15-67)