

Product Information Packet

January 13, 2017

Data shown is for the current revision model #. Ensure your nameplate model # matches.

| | |
|----------------------------|----------------------|
| Model Number: | 5KS215SAE226A |
| Catalog Number: | V983 |
| Instruction Manual: | GEK-95655 |
| Connection Diagram: | GEM2034E-FIG9 |
| Outline Drawing: | 4002B5821PLP5210 |

| Accessory Connection Diagrams | | | |
|-------------------------------|------|------------------------------|----------|
| Bearing Thermocouple: | None | Heater: | 3027JE-1 |
| RTD: | None | Thermistor: | None |
| Thermostat: | None | Winding Thermocouple: | None |
| Bearing RTD: | None | | |

| Table of Contents | |
|-----------------------------|----|
| Specification | 01 |
| Performance Characteristics | 02 |
| Outline Drawing | 03 |
| Connection Drawing(s) | 04 |

Marks:

| | | | |
|----------------------------|----------------------|-------------------------------|-----------|
| MODEL NUMBER: | 5KS215SAE226A | Estimated Weight: | 220 Lbs |
| Outline Drawing: | 4002B5821PLP5210 | Time Rating: | CONT |
| Connection Diagram: | GEM2034E-FIG9 | Enclosure: | TEFC |
| Instruction Book: | GEK-95655 | Encl Construction: | SD |
| Design Code: | 21BD1134A | Ambient Max(°C): | 40 |
| Type: | KS | Alt Ambient Max(°C): | -- |
| Frame: | L215HP10 | Insulation Class: | H |
| Phases: | 3 | NEMA Design: | B |
| Poles: | 4 | Nominal Efficiency: | 91.7 % |
| Output Power: | 10HP 7.4KW | Guaranteed Efficiency: | 90.2 |
| RPM: | 1765 | 3/4 Load Efficiency: | 92.3 |
| Voltage: | 230/460 | KVA Code: | H |
| Hertz: | 60 | Max KVAR: | 3.0 |
| Amps - FL: | 24.4/12.2 | Power Factor: | 83.5 |
| Service Factor: | 1.15 | Bearing - DE: | 6308ZC3 |
| Alt Service Factor: | -- | Bearing - ODE: | 6208-2ZC3 |

Enclosure is Totally Enclosed Fan-Cooled

Stamped Nameplate Notes:

PREMIUM EFFICIENT MOTOR
HTR LDS H 115V 60W
SEVERE DUTY
INVERTER DUTY PER NEMA MG1 PART 31
ALTERNATE RATING FOR PWM CONTROL:
1.0 SF VAR TORQUE RANGE 0-60 HZ
IP55
SUITABLE FOR 190/380V, 50HZ,
1450 RPM, 29.2/14.6A, 1.0SF

Additional Information:

4P - HP EXTN
C/BOX 55 CU IN-1.00 NPT
AUX LEADS EXIT WITH MOTOR LEADS
RCF 5000 CPM, STATIC DEFLECTION .0014 INCHES &
CENTER OF GRAVITY 8.59 INCHES
SOLID SHAFT NORMAL THRUST
OIL RESISTANT SLEEVING ON LEADS
BEARING LIFE 8760 HOURS AT 772 LB THRUST

Performance Characteristics

1st Winding 1st Connection

Design: 21BD1134A

Marks:

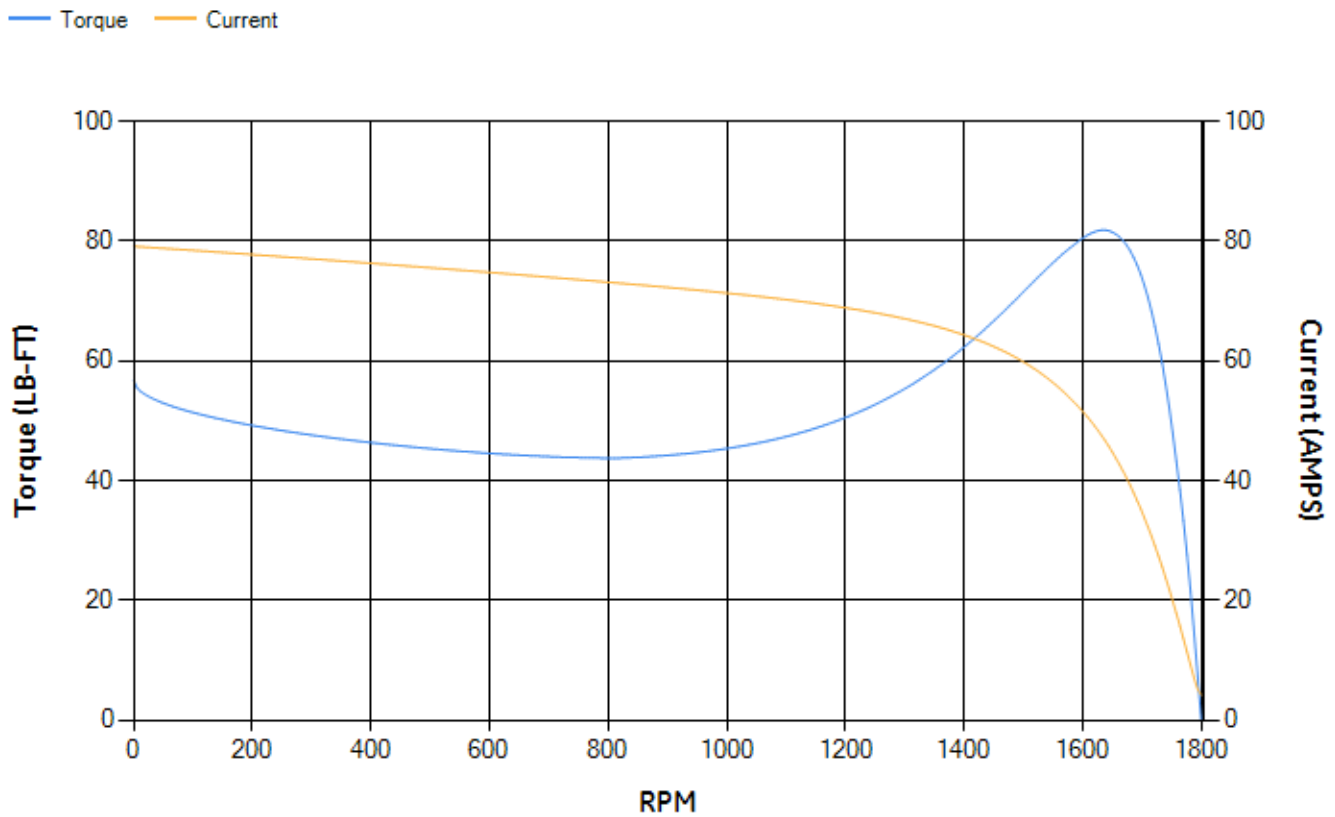
| LOAD % | 125.0 | 115.0 | 100.0 | 75.0 | 50.0 | 25.0 | 0.0 |
|--------|-------|-------|-------|-------|-------|-------|------|
| % EFF | 90.28 | 90.86 | 91.78 | 92.33 | 92.15 | 88.91 | 0.00 |
| % PF | 84.32 | 84.28 | 83.68 | 80.6 | 72.42 | 51.52 | 5.88 |
| AMPS | 15.37 | 14.06 | 12.19 | 9.43 | 7.01 | 5.11 | 4.17 |

| | | | | | |
|--------------------|-------|--------------------|--------|--------------------|--------|
| TORQ(FL)#FT | 29.72 | TORQ(LR)%FL | 190.93 | TORQ(BD)%FL | 273.62 |
| AMPS(LR) | 79.12 | PF AT START | 0.4 | | |

This motor is capable of two cold or one hot start with a maximum connected load inertia of 338 Lb-Ft Sq (14.23 Kg-meter Sq) at 100% voltage, where the load torque varies with the square of the speed. Acceleration time with maximum inertia and the above load type is 46 seconds. Safe stall time at 100% voltage is 102 seconds cold, 68 seconds hot. Rotor inertia is 1.13 Lb-Ft Sq (0.05 Kg-meter Sq).

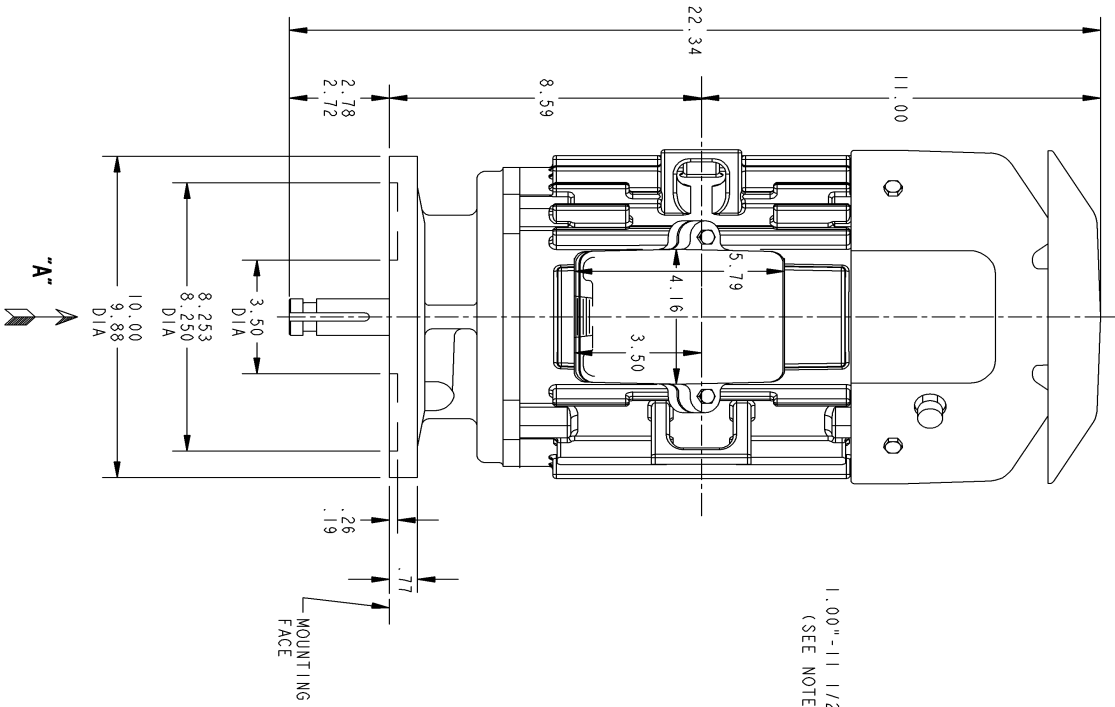
| | | | |
|---------------------------|-------|---------------------------|-------|
| Open Circuit A-C: | 0.422 | Short Circuit D-C: | 0.013 |
| Short Circuit A-C: | 0.02 | X/R Ratio: | 4.867 |
| Stator Slots: | 36 | Rotor Slots: | 28 |

Speed Torque Current Curve (First Connection, First Speed)

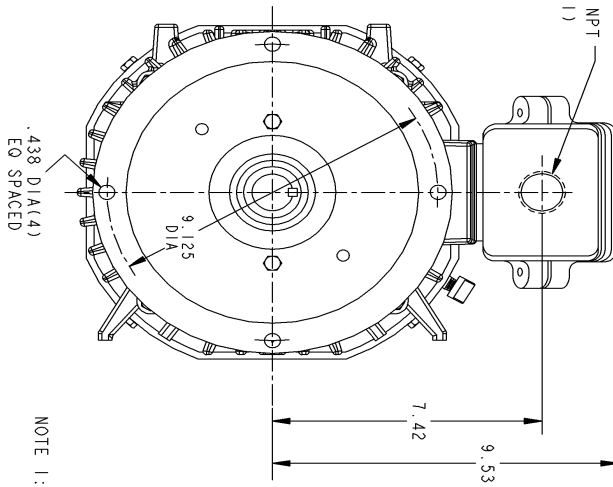


NAME: 103016817 OBJECT: 4002B5821PLP5210 DATE: 10-Jun-03 20:33:36

Marks:



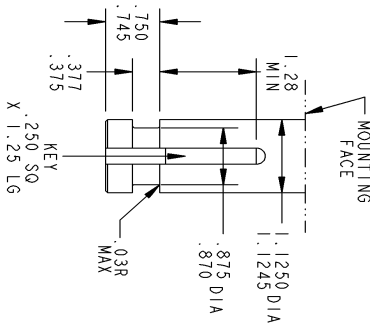
1.00"-11 1/2 NPT
(SEE NOTE 1)



VIEW AT ARROW "A"

NOTE 1: CONDUIT BOX MAY BE ASSEMBLED WITH ENTRANCE UP, DOWN OR TO EITHER SIDE.

ENLARGED VIEW OF
SHAFT EXTENSION



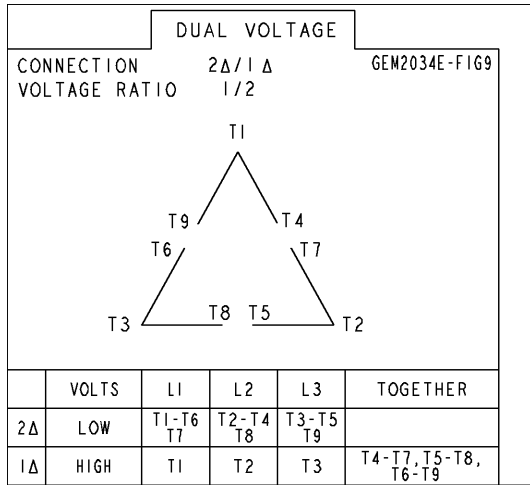
| | | | |
|--------------------------|-------------------------------------------------|---------------------------------------------|--------------------------|
| CAD NO. 4002B5821PLP5210 | GE Motors INDUCTION MOTOR OUTLINE | TITLE | PETERBOROUGH MOTOR PLANT |
| REF. 4002B5821PLP210 | | INDUCTION MOTOR OUTLINE | 4002B5821PLP5210 |
| PLOT SCALE .3 | | FR210 TEFC STANDARD "P" BASE VERTICAL CIR95 | SHEET NO. 1 |
| FIRST MADE FOR | | SOLID SHAFT - NORMAL THRUST | (BD=10) |

| REV | DESCRIPTION | DATE | INT'L |
|---------------------------------------------|-------------|------|-------|
| | | | |
| CAD DRAWING - NO MANUAL REVISIONS PERMITTED | | | |
| 4002B5821PLP5210 | | | |
| CONT. ON SH. - | | | |
| SHEET NO. 1 | | | |

| PRINTS TO | |
|---------------------|----------|
| NAME | DATE |
| 18K15 | |
| DRAWN SHARATHI | 08/10/03 |
| CHECKED ADI KIRANNA | 08/10/03 |

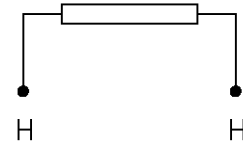
Marks:

Connection Diagram
GEM2034E-FIG9



Heater Connection
3027JE-1

FIG. 1
HEATER CONN.



| | | |
|--------------|----|----|
| CONTROL | L1 | L2 |
| VOLTAGE ONLY | H | H |