

Product Information Packet

November 8, 2016

Data shown is for the current revision model #. Ensure your nameplate model # matches.

Model Number:	5KGS447SAA220D1
Catalog Number:	M8997
Instruction Manual:	GEI-56128
Connection Diagram:	GEM2034E-FIG20
Outline Drawing:	239C6800AA

Accessory Connection Diagrams			
Bearing Thermocouple:	None	Heater:	None
RTD:	None	Thermistor:	None
Thermostat:	None	Winding Thermocouple:	None
Bearing RTD:	None		

Table of Contents

Specification	01
Performance Characteristics	02
Outline Drawing	03
Connection Drawing(s)	04
Spare parts	05



Marks:

MODEL NUMBER:	5KGS447SAA220D1	Estimated Weight:	3080 Lbs
Outline Drawing:	239C6800AA	Time Rating:	CONT
Connection Diagram:	GEM2034E-FIG20	Enclosure:	TEFC
Instruction Book:	GEI-56128	Encl Construction:	X\$D
Design Code:	49BD1246A	Ambient Max(°C):	40
Type:	KGS	Alt Ambient Max(°C):	65
Frame:	447T	Insulation Class:	H
Phases:	3	NEMA Design:	C
Poles:	4	Nominal Efficiency:	96.2 %
Output Power:	200HP 148KW	Guaranteed Efficiency:	95.8
RPM:	1780	3/4 Load Efficiency:	96.3
Voltage:	460	KVA Code:	G
Hertz:	60	Max KVAR:	50.2
Amps - FL:	222.0	Power Factor:	87.5
Service Factor:	1.25	Bearing - DE:	NU 318
Alt Service Factor:	1.00	Bearing - ODE:	6318ZC3

Enclosure is Totally Enclosed Fan-Cooled

Stamped Nameplate Notes:

400V, 50HZ 254.0 AMPS AT 1.0SF
 ROLLER BEARING - FOR BELTED LOAD ONLY
 SF AMPS 276.5
 STAMP NP249A5564P051 AS BELOW:
 MODEL:5KGS447SAA220D1 S/N: XXX
 CSA CERTIFIED CSA09.2216219 FOR EX NA IIC 200 C GC
 CL 1 ZONE2 AEX NA IIC 200C;CL 1 DIV2 GRP ABCD 200C
 IN -40C <= AMB <= 40C, 1.0 SF ON SINE-WAVE PWR
 SURF TEMP 260C AT 1.15SF ON SINE-WAVE PWR
 OR 200 C VT OR 215 C CT OR --- C CHP PWM CONTROL
 ALTERNATE RATING FOR PWM CONTROL 1.0SF 40C AMB
 VT 0-60 HZ, CT 45-60 HZ, CHP --- HZ.

Additional Information:

4P - T EXTN - SPLIT LEAD
 700 CU IN - 3.00" NPT
 OIL RESISTANT SLEEVING ON LEADS
 B5F4C4 HIGH FATIGUE STEEL AISI 4142 SHAFT MATERIAL
 F1 MOUNTING

Performance Characteristics

1st Winding 1st Connection

Design: 49BD1246A

Marks:

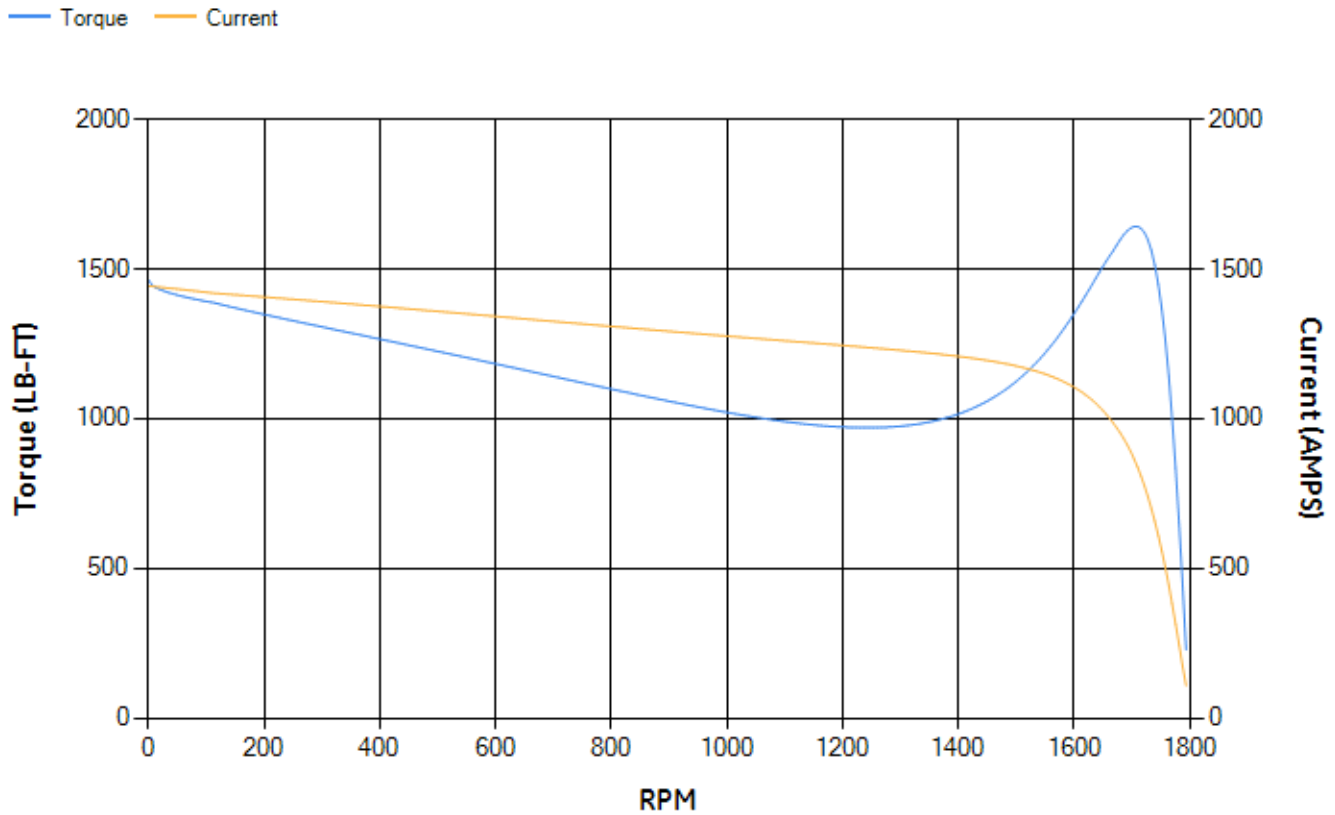
LOAD %	125.0	115.0	100.0	75.0	50.0	25.0	0.0
% EFF	95.49	95.72	96.21	96.34	96.27	94.75	0.00
% PF	88.63	88.38	87.61	84.65	77.01	55.78	3.04
AMPS	276.47	254.47	222.09	172.15	126.24	88.54	70.06

TORQ(FL)#FT	589.23	TORQ(LR)%FL	248.18	TORQ(BD)%FL	278.18
AMPS(LR)	1443.18	PF AT START	0.41		

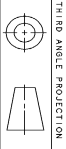
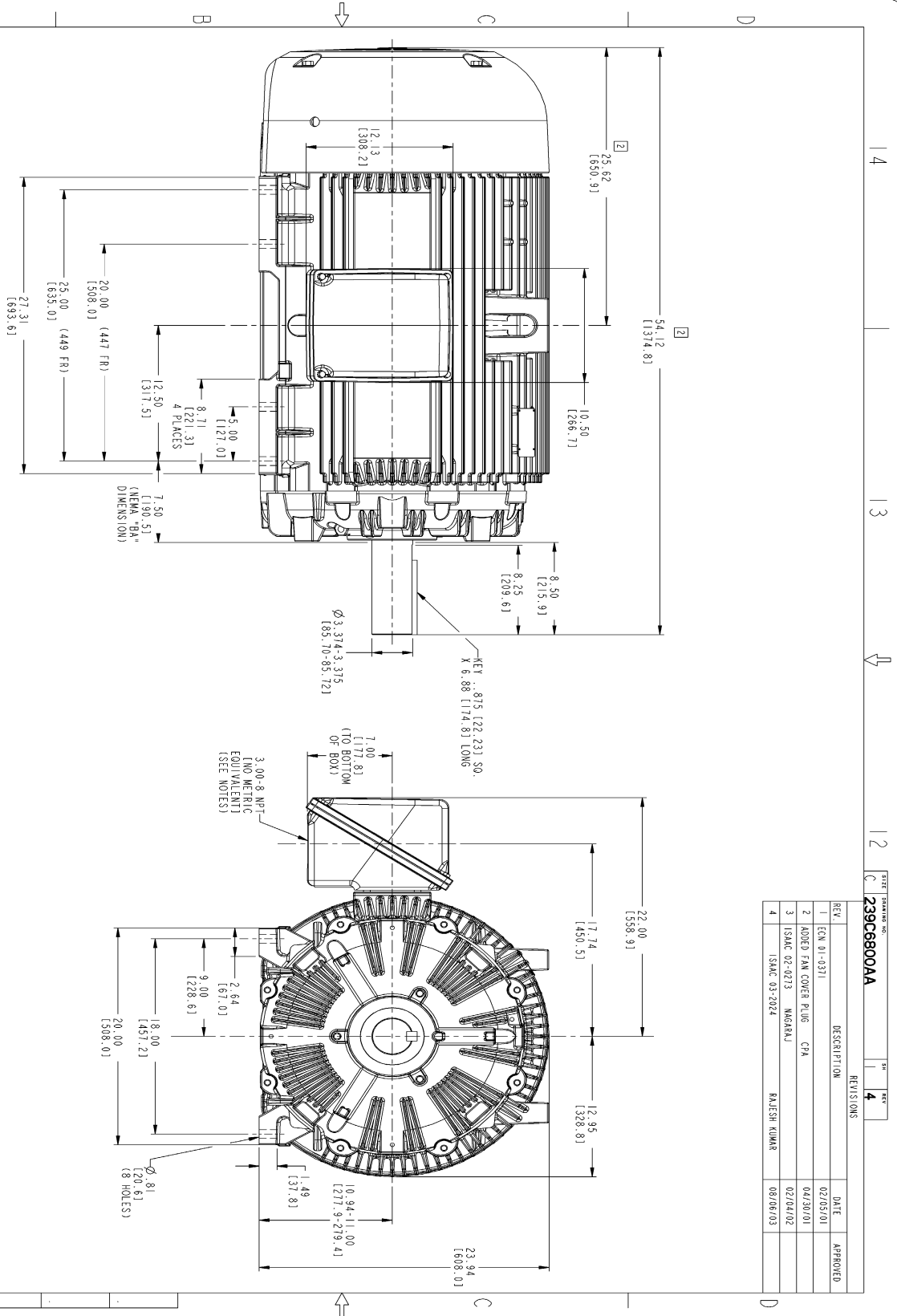
This motor is capable of two cold or one hot start with a maximum connected load inertia of 3217 Lb-Ft Sq (135.44 Kg-meter Sq)at 100% voltage, where the load torque varies with the square of the speed. Acceleration time with maximum inertia and the above load type is 20 seconds. Safe stall time at 100% voltage is 45 seconds cold, 24 seconds hot. Rotor inertia is 136.92 Lb-Ft Sq (5.76 Kg-meter Sq).

Open Circuit A-C:	0.823	Short Circuit D-C:	0.031
Short Circuit A-C:	0.032	X/R Ratio:	11.806
Stator Slots:	72	Rotor Slots:	58

Speed Torque Current Curve (First Connection, First Speed)



Marks:



NOTES:

- CONDUIT BOX MAY BE PLACED WITH THE ENTRANCE DOWN, UP OR ON EITHER SIDE.
- F-1 ASSEMBLY AS SHOWN.
- F-2 ASSEMBLY HAS CONDUIT BOX ON OPPOSITE SIDE.
- BRACKETED DIMENSIONS ARE METRIC (MILLIMETERS).

REV.	DESCRIPTION	DATE	APPROVED
1	ECN 01-0371	02/05/01	
2	CODED FAN COVER PLUG CFA	04/30/01	
3	ISSAC 02-0213 MARGAJ	02/04/02	
4	ISSAC 03-2024 RAJESH KUMAR	08/06/03	

DATE	DATE
04/13/00	04/13/00
04/13/00	04/13/00
04/13/00	04/13/00

DATE	04/13/00
DATE	04/13/00
DATE	04/13/00
DATE	04/13/00

DATE	04/13/00
DATE	04/13/00
DATE	04/13/00
DATE	04/13/00

APPLIED PRACTICES

SCALE: 0.180 REF. NO:

SHEET NO. 4

DISTRIBUTION: MMP

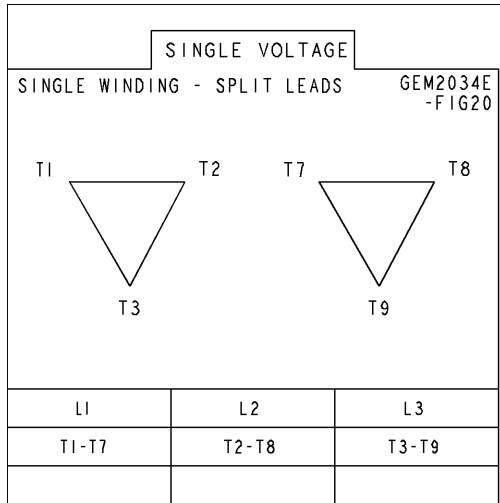
GENERAL ELECTRIC COMPANY
Fort Wayne, Indiana

OUTLINE
447/449T TEFC
700 CU. IN. CONDUIT BOX

239C6800AA

Marks:

Connection Diagram
GEM2034E-FIG20



End shield Assembly		
Part Description	DE Side Part#	ODE Side Part#
End Shield	115E4355AA1	115E4355LL1
Bearing	235A2519AA01	235A2514AG01
Slinger/Inproseal	149C4399G07	149C4399G07

Fan & Fan Cover Assembly	
Part Description	Part#
Fan	159C7100AA2
Fan Cover	128D6841AA1

Conduit & Accessories Box Assembly	
Part Description	Part#
Conduit Box	118D4408AD2

Mechanical Accessories	
Part Description	Part#
Brake	
Tachometer	