

Product Information Packet

July 2, 2017

Data shown is for the current revision model #. Ensure your nameplate model # matches.

Model Number:	5KS324LAA235D
Catalog Number:	M7660
Instruction Manual:	GEI-56128
Connection Diagram:	GEM2034E-FIG9
Outline Drawing:	239C6001AE

Accessory Connection Diagrams			
Bearing Thermocouple:	None	Heater:	None
RTD:	None	Thermistor:	None
Thermostat:	None	Winding Thermocouple:	None
Bearing RTD:	None		

Table of Contents

Specification	01
Performance Characteristics	02
Outline Drawing	03
Connection Drawing(s)	04
Spare parts	05



Marks:

MODEL NUMBER:	5KS324LAA235D	Estimated Weight:	670 Lbs
Outline Drawing:	239C6001AE	Time Rating:	CONT
Connection Diagram:	GEM2034E-FIG9	Enclosure:	TEFC
Instruction Book:	GEI-56128	Encl Construction:	SD
Design Code:	32BD1182A	Ambient Max(°C):	40
Type:	KS	Alt Ambient Max(°C):	--
Frame:	324TC	Insulation Class:	F
Phases:	3	NEMA Design:	B
Poles:	4	Nominal Efficiency:	94.1 %
Output Power:	40HP 29.6KW	Guaranteed Efficiency:	--
RPM:	1780	3/4 Load Efficiency:	--
Voltage:	230/460	KVA Code:	G
Hertz:	60	Max KVAR:	15.2
Amps - FL:	99.4/49.7	Power Factor:	80.0
Service Factor:	1.15	Bearing - DE:	6312ZC3
Alt Service Factor:	--	Bearing - ODE:	6312ZC3

Enclosure is Totally Enclosed Fan-Cooled

Stamped Nameplate Notes:

INVERTER DUTY PER NEMA MG1 PART 31
 ALTERNATE RATING FOR PWM CONTROL:1.0SF 40C AMBIENT
 VAR TORQUE RANGE 0-60 HZ

Additional Information:

4P - T EXTN
 C FACE ON DE
 346 CU IN - 3.00" NPT
 OIL RESISTANT SLEEVING ON LEADS
 F1 MOUNTING
 VIBRATION LIMIT 0.15 INCH PER SEC

Performance Characteristics

1st Winding 1st Connection

Design: 32BD1182A

Marks:

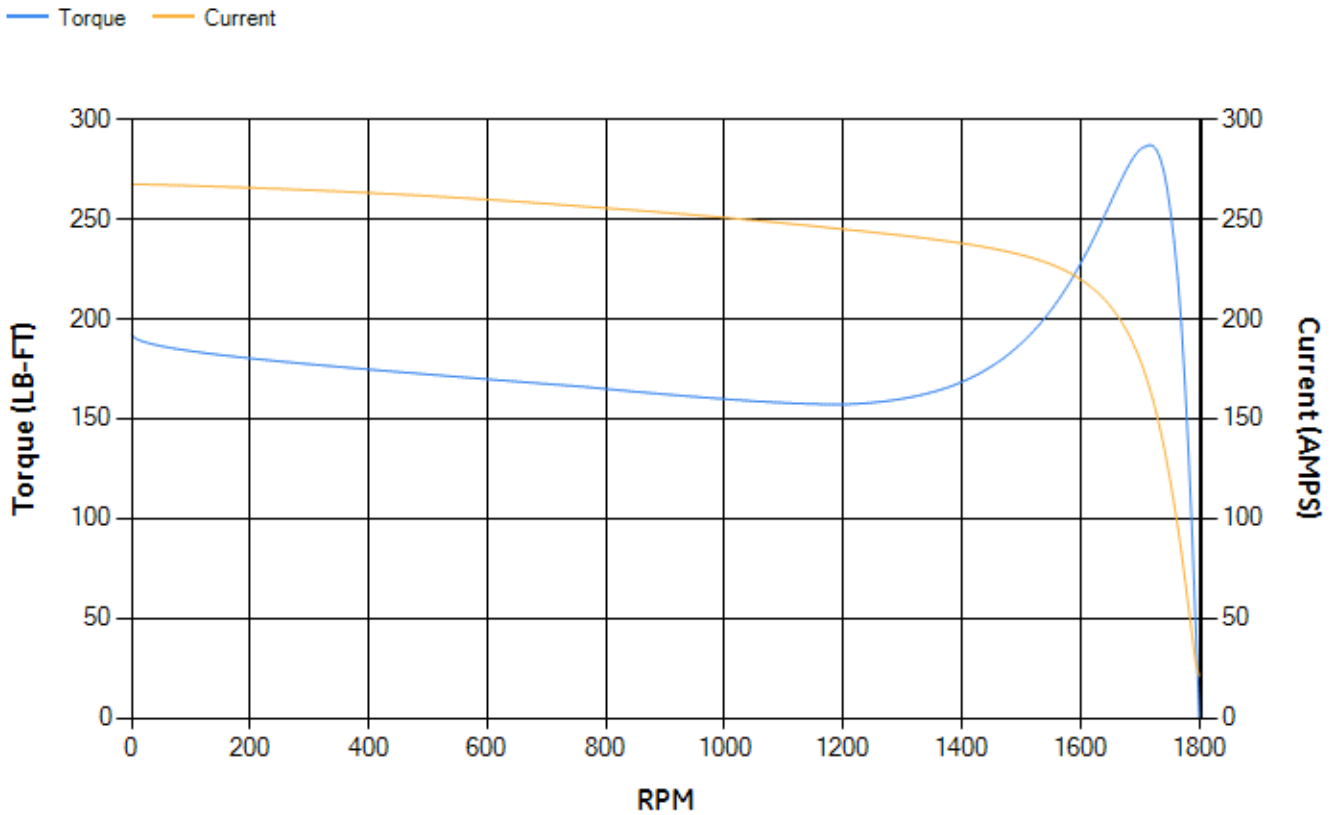
LOAD %	125.0	115.0	100.0	75.0	50.0	25.0	0.0
% EFF	93.44	93.73	94.29	94.38	93.95	91	0.00
% PF	82.2	81.63	80.17	75.3	64.74	42.47	3.55
AMPS	60.93	56.27	49.42	39.51	30.78	24.22	21.15

TORQ(FL)#FT	118.11	TORQ(LR)%FL	162.86	TORQ(BD)%FL	242.16
AMPS(LR)	267.58	PF AT START	0.33		

This motor is capable of two cold or one hot start with a maximum connected load inertia of 952 Lb-Ft Sq (40.08 Kg-meter Sq) at 100% voltage, where the load torque varies with the square of the speed. Acceleration time with maximum inertia and the above load type is 40 seconds. Safe stall time at 100% voltage is 88 seconds cold, 47 seconds hot. Rotor inertia is 7.01 Lb-Ft Sq (0.3 Kg-meter Sq).

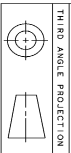
Open Circuit A-C:	0.48	Short Circuit D-C:	0.022
Short Circuit A-C:	0.032	X/R Ratio:	8.428
Stator Slots:	48	Rotor Slots:	38

Speed Torque Current Curve (First Connection, First Speed)

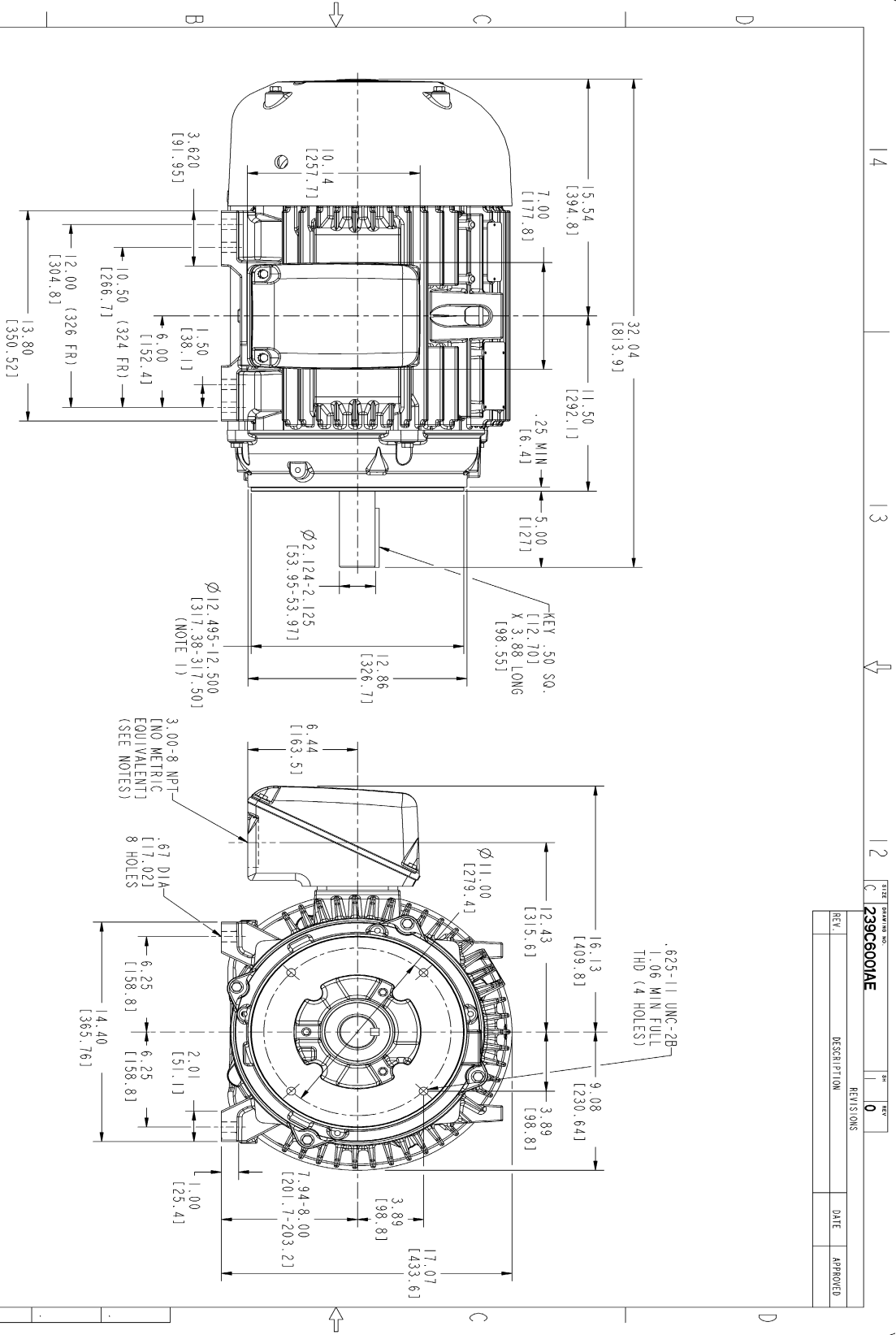


NAME:501291659 OBJECT:239C6001AE DATE:28-Feb-08 19:07:23

Marks:



THIRD ANGLE PROJECTION



NOTES :

1. CONDUIT BOX MAY BE PLACED WITH THE ENTRANCE DOWN, UP OR ON EITHER SIDE.
2. F-1 ASM AS SHOWN.
3. F-2 ASM - HAS CONDUIT BOX ON OPPOSITE SIDE.
4. BRACKETED DIMENSIONS ARE METRIC (MILLIMETERS).

DRAWING NO.		REV.	
239C6001AE		10	
REVISIONS		DATE	APPROVED
REV.	DESCRIPTION		

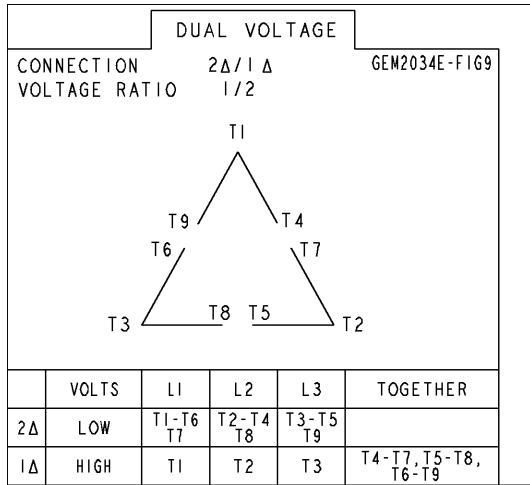
DESIGNER	DATE	 GENERAL ELECTRIC COMPANY Fort Wayne, Indiana
DRW	03/14/02	
CHECKED	03/14/02	
ISSUED	03/14/02	

OUTLINE
 324/326 TC TFC XSD ULTRA
 346 CU IN CONDUIT BOX
239C6001AE

SIGNED: []
 SCALE: 0.250 REF. NO.:
 SHEET 1 OF 1

Marks:

Connection Diagram
GEM2034E-FIG9



End shield Assembly		
Part Description	DE Side Part#	ODE Side Part#
End Shield	115E4203AA1	115E4200LA1
Bearing	235A2609AA01	235A2609AA01
Slinger/Inproseal	149C4399G04	149C4399G04

Fan & Fan Cover Assembly	
Part Description	Part#
Fan	159C6900G04
Fan Cover	128D6800AA1

Conduit & Accessories Box Assembly	
Part Description	Part#
Conduit Box	149C4429AA2

Mechanical Accessories	
Part Description	Part#
Brake	
Tachometer	