

Product Information Packet

December 16, 2016

Data shown is for the current revision model #. Ensure your nameplate model # matches.

Model Number:	5KS405XAA2122B
Catalog Number:	M9484
Instruction Manual:	GEI-56128
Connection Diagram:	GEM2034E-FIG7
Outline Drawing:	239C6400RF

Accessory Connection Diagrams			
Bearing Thermocouple:	None	Heater:	None
RTD:	None	Thermistor:	None
Thermostat:	None	Winding Thermocouple:	None
Bearing RTD:	None		

Table of Contents

Specification	01
Performance Characteristics	02
Outline Drawing	03
Connection Drawing(s)	04
Spare parts	05



Marks:

MODEL NUMBER:	5KS405XAA2122B	Estimated Weight:	1440 Lbs
Outline Drawing:	239C6400RF	Time Rating:	CONT
Connection Diagram:	GEM2034E-FIG7	Enclosure:	TEFC
Instruction Book:	GEI-56128	Encl Construction:	841
Design Code:	40BD1112B	Ambient Max(°C):	40
Type:	KS	Alt Ambient Max(°C):	--
Frame:	405T	Insulation Class:	H
Phases:	3	NEMA Design:	B
Poles:	4	Nominal Efficiency:	95.4 %
Output Power:	100HP 74KW	Guaranteed Efficiency:	95.0
RPM:	1785	3/4 Load Efficiency:	95.6
Voltage:	575	KVA Code:	G
Hertz:	60	Max KVAR:	35.9
Amps - FL:	97.5	Power Factor:	80.5
Service Factor:	1.15	Bearing - DE:	NU 316
Alt Service Factor:	--	Bearing - ODE:	6316ZC3S0

Enclosure is Totally Enclosed Fan-Cooled

Stamped Nameplate Notes:

IEEE-STD-841-2009
 ROLLER BEARING - FOR BELTED LOAD ONLY
 DE BRG 80RU03M, ODE BRG 80BC03JP3026
 STAMP NP249A5564P051 AS BELOW:
 MODEL:5KS405XAA2122B S/N: XXX
 CSA CERTIFIED CSA09.2216219 FOR EX NA IIC 200 C GC
 CL 1 ZONE2 AEX NA IIC 200C;CL 1 DIV2 GRP ABCD 200C
 IN -25C <= AMB <= 40C, 1.0 SF ON SINE-WAVE PWR
 SURF TEMP 215C AT 1.15SF ON SINE-WAVE PWR
 OR 200 C VT OR 230 C CT OR 200 C CHP PWM CONTROL
 ALTERNATE RATING FOR PWM CONTROL 1.0SF 40C AMB
 VT 0-60 HZ, CT 6.7-60 HZ, CHP 60-90 HZ.

Additional Information:

4P - T EXTN
 PAINTED FRAME ID & SHAFT,
 FAN COVER INSIDE & ODE E/S OUTSIDE
 700 CU IN - 3.00" NPT
 INPRO SEAL BOTH ENDS
 OIL RESISTANT SLEEVING ON LEADS
 .002" TIR SHAFT RUNOUT
 ROUTINE TEST REPORT AND 5 POINT VIBRATION TEST
 REPORT INCLUDED IN C/B
 COPPER WASHER UNDER HEADS OF BEARING CAP BOLTS,
 APPLY TITE-SEAL (A50CD427A) ON BEARING CAP SCREWS,
 RABBETS AND PLUG THREADS.
 B5F4C4 HIGH FATIGUE STEEL AISI 4142 SHAFT MATERIAL



GROUND PAD
F1 MOUNTING

Performance Characteristics

1st Winding 1st Connection

Design: 40BD1112B

Marks:

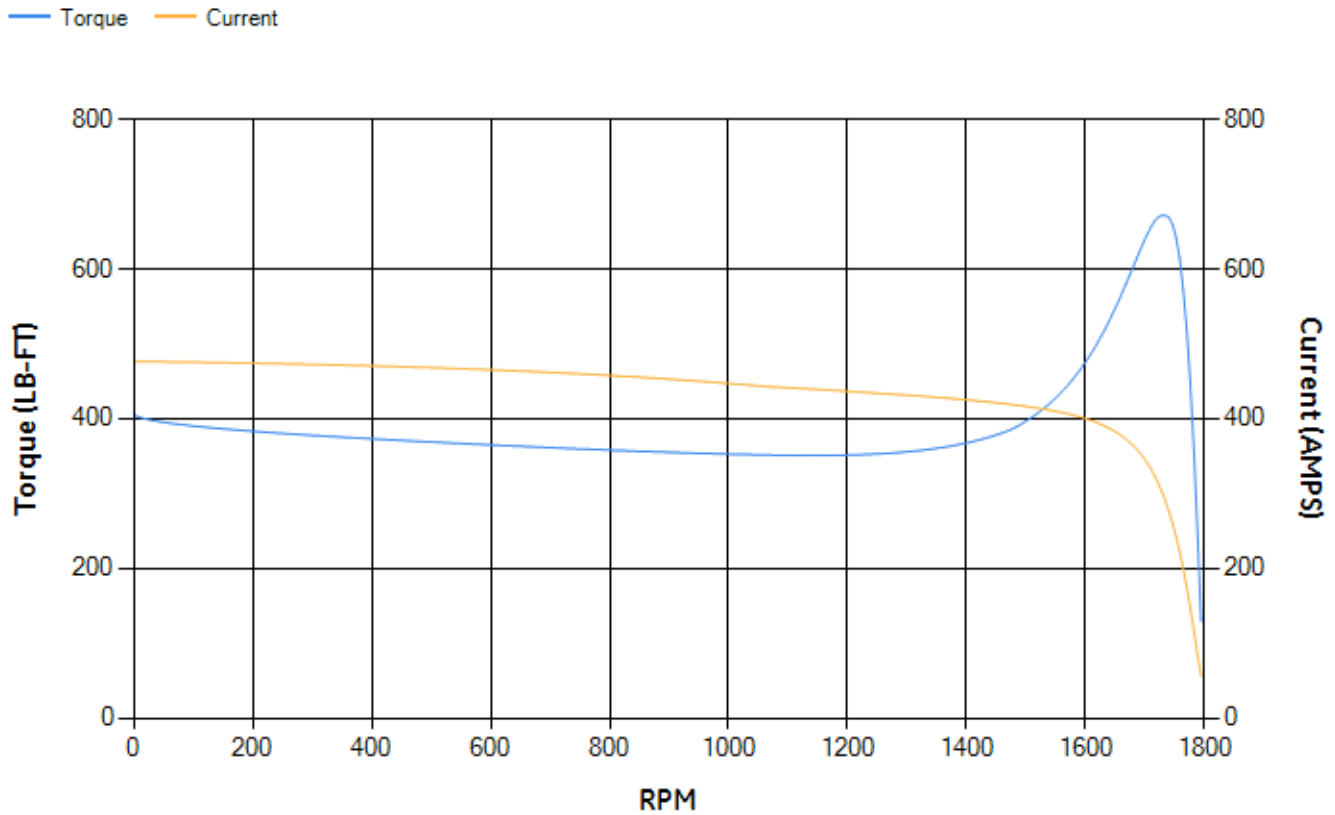
LOAD %	125.0	115.0	100.0	75.0	50.0	25.0	0.0
% EFF	94.96	95.17	95.62	95.58	95.16	92.65	0.00
% PF	82.41	81.97	80.72	76.27	66.16	43.84	3.18
AMPS	119.59	110.38	97.01	77.04	59.47	46.09	40.04

TORQ(FL)#FT	294.21	TORQ(LR)%FL	138.39	TORQ(BD)%FL	228.12
AMPS(LR)	476.36	PF AT START	0.29		

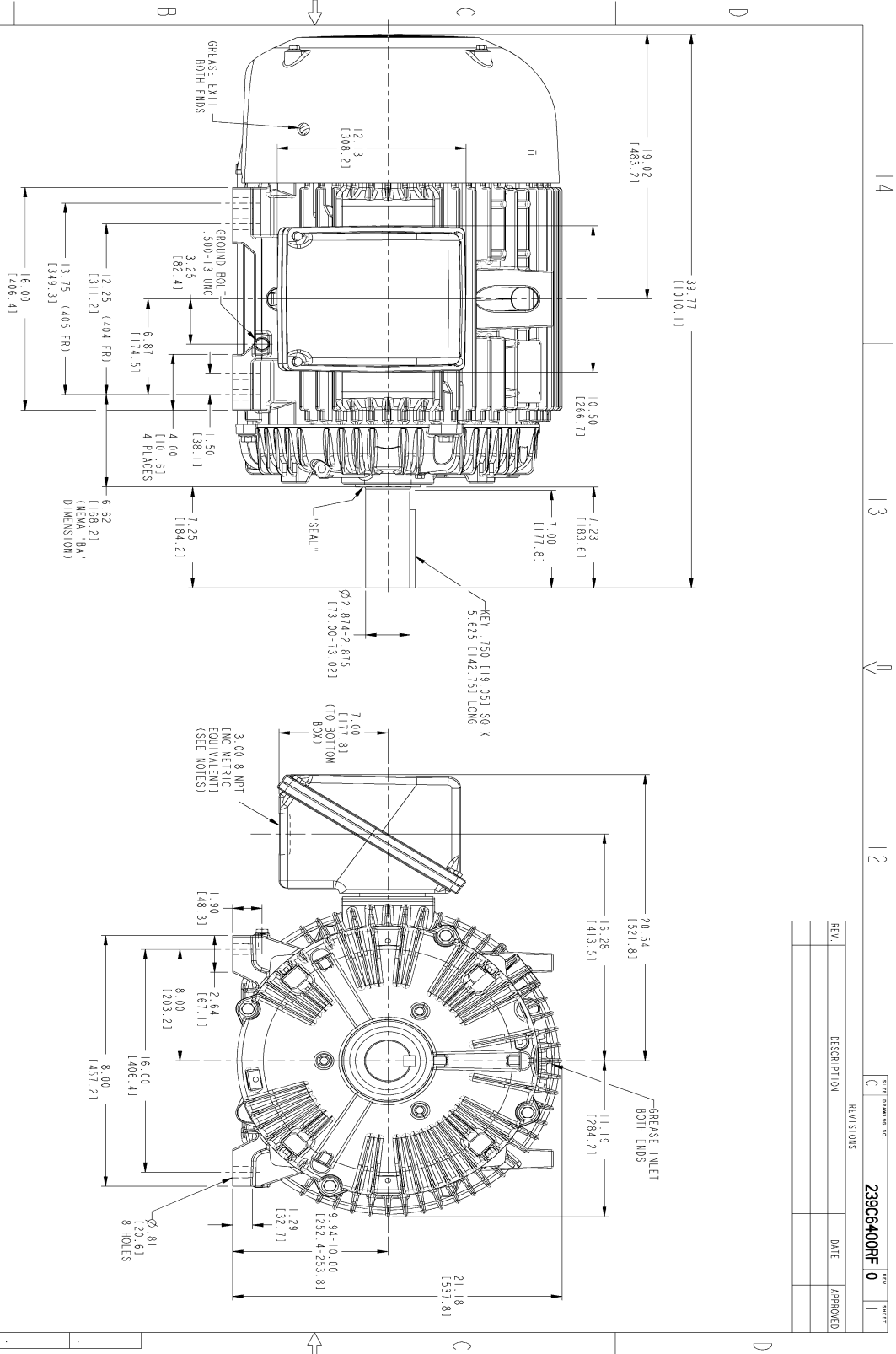
This motor is capable of two cold or one hot start with a maximum connected load inertia of 2447 Lb-Ft Sq (103.02 Kg-meter Sq)at 100% voltage, where the load torque varies with the square of the speed. Acceleration time with maximum inertia and the above load type is 49 seconds. Safe stall time at 100% voltage is 106 seconds cold, 59 seconds hot. Rotor inertia is 21.75 Lb-Ft Sq (0.92 Kg-meter Sq).

Open Circuit A-C:	0.708	Short Circuit D-C:	0.033
Short Circuit A-C:	0.05	X/R Ratio:	12.575
Stator Slots:	72	Rotor Slots:	58

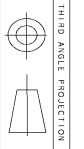
Speed Torque Current Curve (First Connection, First Speed)



Marks:



- NOTES:
1. CONDUIT BOX MAY BE PLACED WITH THE ENTRANCE DOWN, UP OR ON EITHER SIDE.
 2. F-1 ASSEMBLY AS SHOWN.
 3. F-2 ASSEMBLY CONDUIT BOX ON OPPOSITE SIDE.
 4. BRACKETED DIMENSIONS ARE METRIC (MILLIMETERS).
 5. TOLERANCE ON PERMISSIBLE SHAFT EXTENSION RUNOUT IS .002 T.I.R.



- NOTES:
1. CONDUIT BOX MAY BE PLACED WITH THE ENTRANCE DOWN, UP OR ON EITHER SIDE.
 2. F-1 ASSEMBLY AS SHOWN.
 3. F-2 ASSEMBLY CONDUIT BOX ON OPPOSITE SIDE.
 4. BRACKETED DIMENSIONS ARE METRIC (MILLIMETERS).
 5. TOLERANCE ON PERMISSIBLE SHAFT EXTENSION RUNOUT IS .002 T.I.R.

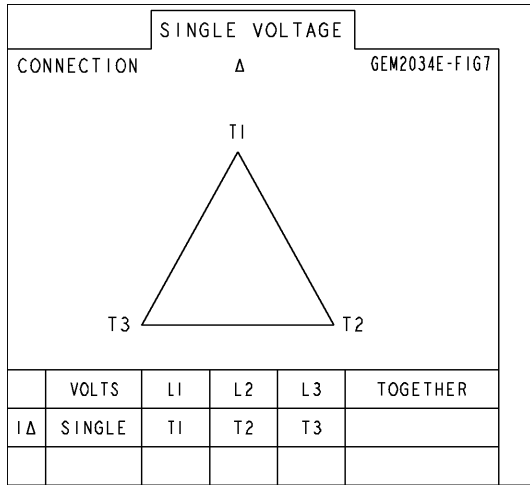
MODEL	TEKAM 0127115	DATE	
SIGNATURES	TEKAM 0127115		
DESIGN	KARHIK 0127115		
DRWG	KARHIK 0127115		
CHKD	KARHIK 0127115		
ISSUED	TEKAM 0127115		
SCALE	C	SCALE	0.210
REV	0	REV	0
GENERAL ELECTRIC COMPANY OUTLINE 404/405 T TFC XSD 841 700 CU IN CONDUIT BOX, .002" T.I.R 239C6400RF			
DISTRIBUTION: MMP		SHEET 1 OF 1	

REV.	DESCRIPTION	DATE	APPROVED

SHEET NO. 0
 REV. 0
 239C6400RF

Marks:

Connection Diagram
GEM2034E-FIG7



End shield Assembly		
Part Description	DE Side Part#	ODE Side Part#
End Shield	115E4304AA1	115E4304LK1
Bearing	235A2526AA01	235A2618AA04
Slinger/Inproseal	235A4575GS4	235A4575GS4

Fan & Fan Cover Assembly	
Part Description	Part#
Fan	159C7100AA2
Fan Cover	128D6832AA1

Conduit & Accessories Box Assembly	
Part Description	Part#
Conduit Box	118D4408AD2

Mechanical Accessories	
Part Description	Part#
Brake	
Tachometer	