

# Product Information Packet

November 7, 2016

Data shown is for the current revision model #. Ensure your nameplate model # matches.

<b>Model Number:</b>	<b>5CD163KA009A134</b>
<b>Catalog Number:</b>	<b>D433</b>
<b>Instruction Manual:</b>	GEH-3967
<b>Connection Diagram:</b>	36A167760CA501
<b>Outline Drawing:</b>	36A167933AA001

Accessory Connection Diagrams			
<b>Bearing Thermocouple:</b>	None	<b>Heater:</b>	None
<b>RTD:</b>	None	<b>Thermistor:</b>	None
<b>Thermostat:</b>	None	<b>Winding Thermocouple:</b>	None
<b>Bearing RTD:</b>	None		

Table of Contents	
Specification	01
Outline Drawing	02
Connection Drawing(s)	03

**Marks:**

<b>MODEL NUMBER:</b>	<b>5CD163KA009A134</b>	<b>Enclosure Mtg Assem:</b>	36A167770AC001
<b>Outline Drawing:</b>	36A167933AA001	<b>Instruction Book:</b>	GEH-3967
<b>Connection Diagram:</b>	36A167760CA501	<b>RPM:</b>	1750/2300
<b>Horsepower:</b>	15	<b>Armature Amps:</b>	25.2
<b>Armature Volts:</b>	500	<b>Type:</b>	CD258AT
<b>Wound:</b>	SHUNT	<b>Power Supply Code:</b>	D
<b>Enclosure:</b>	DPFG-SV	<b>Insulation Class:</b>	F
<b>Duty:</b>	CONT	<b>Ambient Max (°C):</b>	40 C
<b>Rating Code:</b>	163K1340-00	<b>Field Volts:</b>	300/150
<b>K(V):</b>	2.46 Cemf volts/Radian/Sec	<b>WK2:</b>	2.91Lb Ft2
<b>K(T):</b>	1.79 Ft/Amp	<b>Year of Manufacture:</b>	2016
<b>Minimum Ambient:</b>	0 C	<b>Max Altitude:</b>	3300 Ft

**Resistances at 25 Degrees C :**

<b>Shunt Field:</b>	135 OHMS
<b>Armature:</b>	1.0829 OHMS
<b>Commutator Field:</b>	.3255 OHMS

**Inductances:**

<b>Armature Circuit Total:</b>	23.580 mH Saturated
<b>Shunt Field:</b>	93.0 Henries Unsaturated

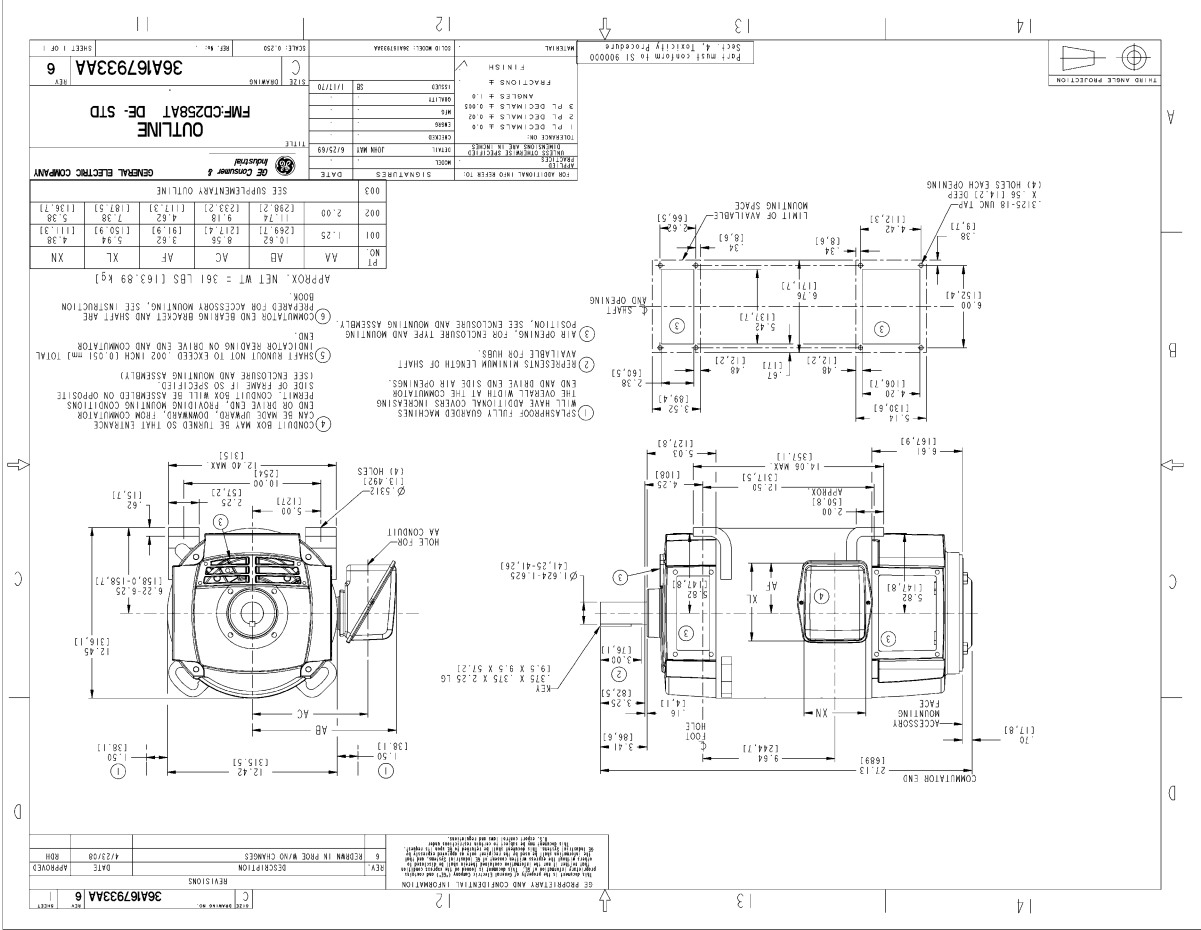
**Shunt Field Data:**

Shunt Field Current(1): 1.6 AMPS at Rated Load and 1750 RPM  
 Shunt Field Current(2): 1.26 AMPS at Rated Load and 1933 RPM  
 Shunt Field Current(3): .88 AMPS at Rated Load and 2300 RPM

**Additional Machine Notes:**

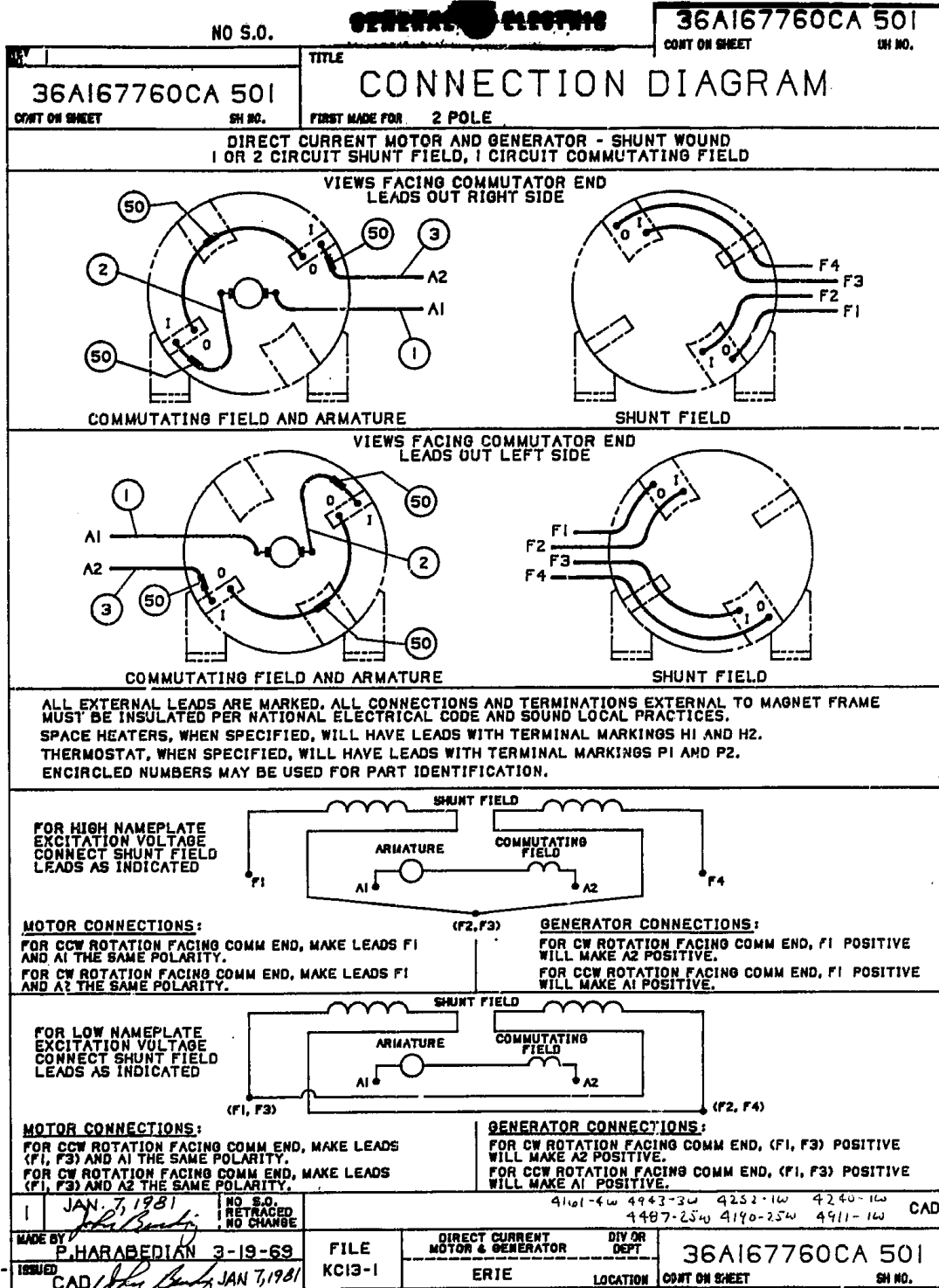
DRIPPROOF FULLY GUARDED, SEPARATELY VENTILATED  
 - BALL BEARINGS  
 CONDUIT BOX ON RIGHT HAND SIDE FACING COMMUTATOR END  
 STANDARD SHAFT DRIVE END ONLY - WITH FEET  
 SEPARATELY VENTILATED AT 160 CFM  
 PRESSURE DROP AT .45 INCHES OF WATER  
 WITH:  
 CSA STAMP  
 THERMOSTAT- NORMALLY CLOSED, AC RATING- 600V MAX-  
 .5A, 250V-1.5A, OR 125V-3A, DC RATING- 30V MAX-  
 1.5A.MAXIMUM CURRENT BASED ON INDUCTIVE LOADS UP  
 TO AND INCLUDING NEMA NO.5 CONTACTOR.

Marks:



NAME: 20800954 OBIC: 36A167933AA DATE: 24-APR-08 10:55:59

Marks:



DGRM 36A167760CA501R01  
PLT .64 SCL