

Product Information Packet

November 7, 2016

Data shown is for the current revision model #. Ensure your nameplate model # matches.

Model Number:	5KS184ATE305A
Catalog Number:	E7710
Instruction Manual:	GEI-M1023
Connection Diagram:	GEM2034E-FIG3
Outline Drawing:	358B6214AB

Accessory Connection Diagrams			
Bearing Thermocouple:	None	Heater:	None
RTD:	None	Thermistor:	None
Thermostat:	None	Winding Thermocouple:	None
Bearing RTD:	None		

Table of Contents	
Specification	01
Performance Characteristics	02
Outline Drawing	03
Connection Drawing(s)	04

Marks:

MODEL NUMBER:	5KS184ATE305A	Estimated Weight:	106 Lbs
Outline Drawing:	358B6214AB	Time Rating:	CONT
Connection Diagram:	GEM2034E-FIG3	Enclosure:	DP
Instruction Book:	GEI-M1023	Encl Construction:	OPEN
Design Code:	18AD3005A	Ambient Max(°C):	40
Type:	KS	Alt Ambient Max(°C):	--
Frame:	184T	Insulation Class:	F
Phases:	3	NEMA Design:	A
Poles:	6	Nominal Efficiency:	87.5 %
Output Power:	2HP 1.5KW	Guaranteed Efficiency:	85.5
RPM:	1175	3/4 Load Efficiency:	87.9
Voltage:	230/460	KVA Code:	N
Hertz:	60	Max KVAR:	1.7
Amps - FL:	7.0/3.5	Power Factor:	60.5
Service Factor:	1.15	Bearing - DE:	6207ZZ
Alt Service Factor:	--	Bearing - ODE:	6206ZZ

Enclosure is Dripproof

Stamped Nameplate Notes:**Additional Information:**

6 POLE DP
 LRA: 60.6/30.3
 NO. OF MOTOR LEADS: 9
 CONDUIT BOX VOLUME (IN³): 30.2
 CONDUIT BOX MTL: STAMPED STEEL
 GREASE TYPE: SHELL ALVANIA R3 LITHIUM GREASE
 USABLE AT 200V @ 2 HP, 7 AMPS @ 1.0 SF
 50 HZ DATA: 2 HP, 200/400V, 7.8/3.9 AMPS @ 1.0 SF, 970 RPM
 SOUND POWER: 66.1
 DMK, 06/04, DATA UPDATE 11/2004
 INVERTER DUTY PER NEMA MG1 PART 31
 FOR VARIABLE TORQUE LOADS

Performance Characteristics

1st Winding 1st Connection

Design: 18AD3005A

Marks:

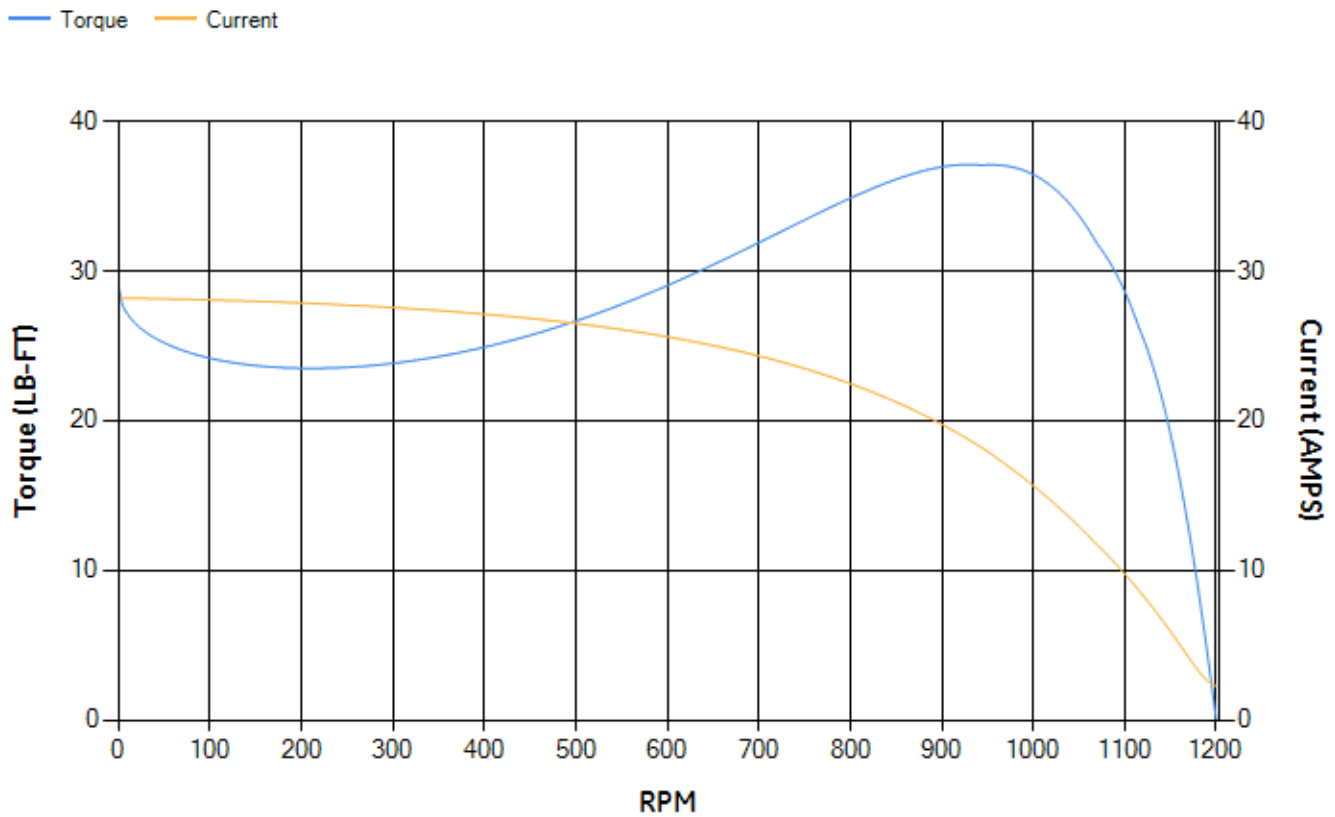
LOAD %	125.0	115.0	100.0	75.0	50.0	25.0	0.0
% EFF	88.35	88.49	88.73	87.89	85.46	77.15	0.00
% PF	69.35	67.16	63.2	54.28	41.77	25.27	5.5
AMPS	3.82	3.62	3.34	2.94	2.62	2.4	2.29

TORQ(FL)#FT	8.93	TORQ(LR)%FL	324.76	TORQ(BD)%FL	403.24
AMPS(LR)	28.19	PF AT START	0.43		

This motor is capable of two cold or one hot start with a maximum connected load inertia of 339 Lb-Ft Sq (14.27 Kg-meter Sq)at 100% voltage, where the load torque varies with the square of the speed. Acceleration time with maximum inertia and the above load type is 51 seconds. Safe stall time at 100% voltage is 122 seconds cold, 90 seconds hot. Rotor inertia is 0.46 Lb-Ft Sq (0.02 Kg-meter Sq).

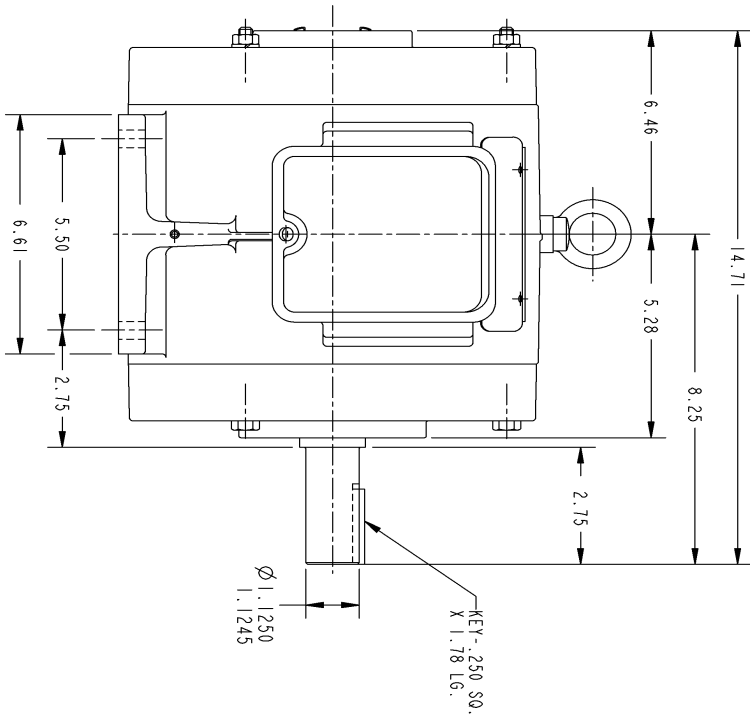
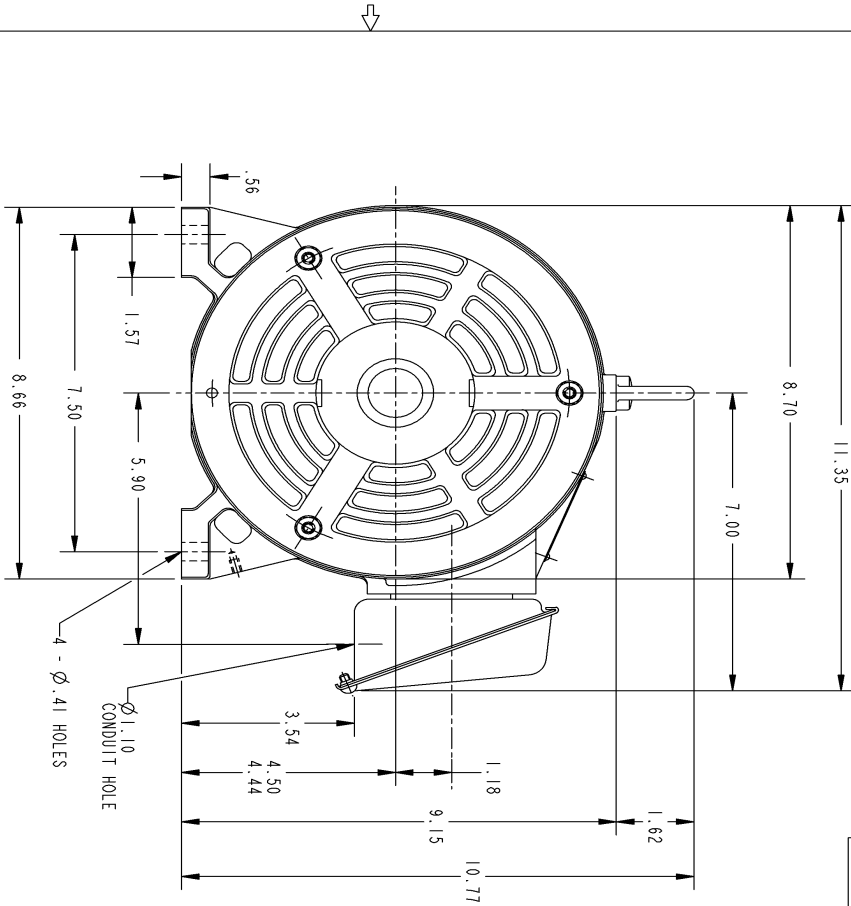
Open Circuit A-C:	0.149	Short Circuit D-C:	0.01
Short Circuit A-C:	0.01	X/R Ratio:	3.702
Stator Slots:	36	Rotor Slots:	46

Speed Torque Current Curve (First Connection, First Speed)



NAME:501452442 OBJECT:358B6214AB DATE:24-May-07 23:02:33

Marks:



THIS DRAWING IS THE PROPERTY OF GEORGE EASTMAN COMPANY (GEC) AND CONTAINS PROPRIETARY INFORMATION. IT IS TO BE USED ONLY FOR THE PURPOSES SPECIFIED IN THE ORDER AND IS NOT TO BE REPRODUCED OR TRANSMITTED IN ANY FORM OR BY ANY MEANS, ELECTRONIC OR MECHANICAL, INCLUDING PHOTOCOPYING, RECORDING, OR BY ANY INFORMATION STORAGE AND RETRIEVAL SYSTEM. THIS DRAWING SHALL BE RETURNED TO GEC UPON 15 BUSINESS DAYS AFTER THE DATE OF DELIVERY OR SUBJECT TO GEORGE EASTMAN COMPANY'S ACCEPTANCE OF THE DRAWING.

SIZE: DRAWING FOR B 358B6214AB GE PROPRIETARY INFORMATION

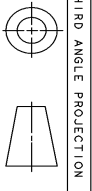
REV.	DESCRIPTION	DATE	APPROVED
1	ISAAC 07-0770	05/02/07	R. KOHNE

REVISIONS

SHEET 1 REV 1

NOTES :

1. CONDUIT BOX MAY BE PLACED WITH THE ENTRANCE DOWN, UP OR ON EITHER SIDE.
2. F-1 ASM AS SHOWN.
3. F-2 ASM - HAS CONDUIT BOX ON OPPOSITE SIDE.



THIRD ANGLE PROJECTION

UNLESS OTHERWISE SPECIFIED:		SIGNATURES		DATE	
DIMENSIONS ARE IN INCHES		DRAWN		P. RAJU 03/28/03	
TOLERANCES ARE:		CHECKED		PABHAKAR 03/27/03	
2 PL DECIMALS ±		ENGR			
3 PL DECIMALS ±		ISSUED		PABHAKAR 03/27/03	
ANGLES ± 1°		APPLIED PRACTICES			
MATERIAL:		SIZE/DRAWING		REV.	
		B 358B6214AB		1	
		SCALE: DRAWING SCALE		SHEET 1 OF 1	

GE Industrial Systems
GENERAL ELECTRIC COMPANY
 Fort Wayne, Indiana

OUTLINE
184T - OPEN DRIP PROOF

DISTRIBUTION:

Marks:

Connection Diagram
GEM2034E-FIG3

