

Product Information Packet

November 7, 2016

Data shown is for the current revision model #. Ensure your nameplate model # matches.

Model Number:	5KS213ATE204A
Catalog Number:	E7640
Instruction Manual:	GEI-M1023
Connection Diagram:	GEM2034E-FIG7
Outline Drawing:	358B6215AA

Accessory Connection Diagrams			
Bearing Thermocouple:	None	Heater:	None
RTD:	None	Thermistor:	None
Thermostat:	None	Winding Thermocouple:	None
Bearing RTD:	None		

Table of Contents	
Specification	01
Performance Characteristics	02
Outline Drawing	03
Connection Drawing(s)	04



Marks:

MODEL NUMBER:	5KS213ATE204A	Estimated Weight:	156 Lbs
Outline Drawing:	358B6215AA	Time Rating:	CONT
Connection Diagram:	GEM2034E-FIG7	Enclosure:	DP
Instruction Book:	GEI-M1023	Encl Construction:	OPEN
Design Code:	21AD1006B	Ambient Max(°C):	40
Type:	KS	Alt Ambient Max(°C):	--
Frame:	213T	Insulation Class:	F
Phases:	3	NEMA Design:	A
Poles:	4	Nominal Efficiency:	91.0 %
Output Power:	7.5HP 5.6KW	Guaranteed Efficiency:	89.5
RPM:	1770	3/4 Load Efficiency:	92.0
Voltage:	575	KVA Code:	L
Hertz:	60	Max KVAR:	3.1
Amps - FL:	7.6	Power Factor:	79.5
Service Factor:	1.15	Bearing - DE:	6308ZZ
Alt Service Factor:	--	Bearing - ODE:	6208ZZ

Enclosure is Dripproof

Stamped Nameplate Notes:**Additional Information:**

4 POLE DRIP PROOF
 CONDUIT BOX MATERIAL: STAMPED STEEL
 CONDUIT BOX VOL: 50.3 CU IN
 NO. OF MOTOR LEADS: 3
 NOT USEABLE AT 200 VOLTS
 GREASE TYPE: SHELL ALVANIA R3 LITHIUM
 SOUND POWER DATA: 69.5
 OFFSET STATOR CORE NOT SUITABLE FOR F2 CONVERSION
 INVERTER DUTY PER NEMA MG1 PART 31
 FOR VARIABLE TORQUE LOADS

Performance Characteristics

1st Winding 1st Connection

Design: 21AD1006B

Marks:

LOAD %	125.0	115.0	100.0	75.0	50.0	25.0	0.0
% EFF	90.87	91.25	91.91	92.04	91.33	87.09	0.00
% PF	83.46	82.74	81.09	76	65.43	43.71	5.66
AMPS	9.25	8.55	7.54	6.02	4.7	3.69	3.19

TORQ(FL)#FT 22.26
AMPS(LR) 61.41

TORQ(LR)%FL 300.32
PF AT START 0.44

TORQ(BD)%FL 342.31

This motor is capable of two cold or one hot start with a maximum connected load inertia of 272 Lb-Ft Sq (11.45 Kg-meter Sq) at 100% voltage, where the load torque varies with the square of the speed. Acceleration time with maximum inertia and the above load type is 30 seconds. Safe stall time at 100% voltage is 71 seconds cold, 50 seconds hot. Rotor inertia is 0.82 Lb-Ft Sq (0.03 Kg-meter Sq).

Open Circuit A-C: 0.346

Short Circuit D-C: 0.011

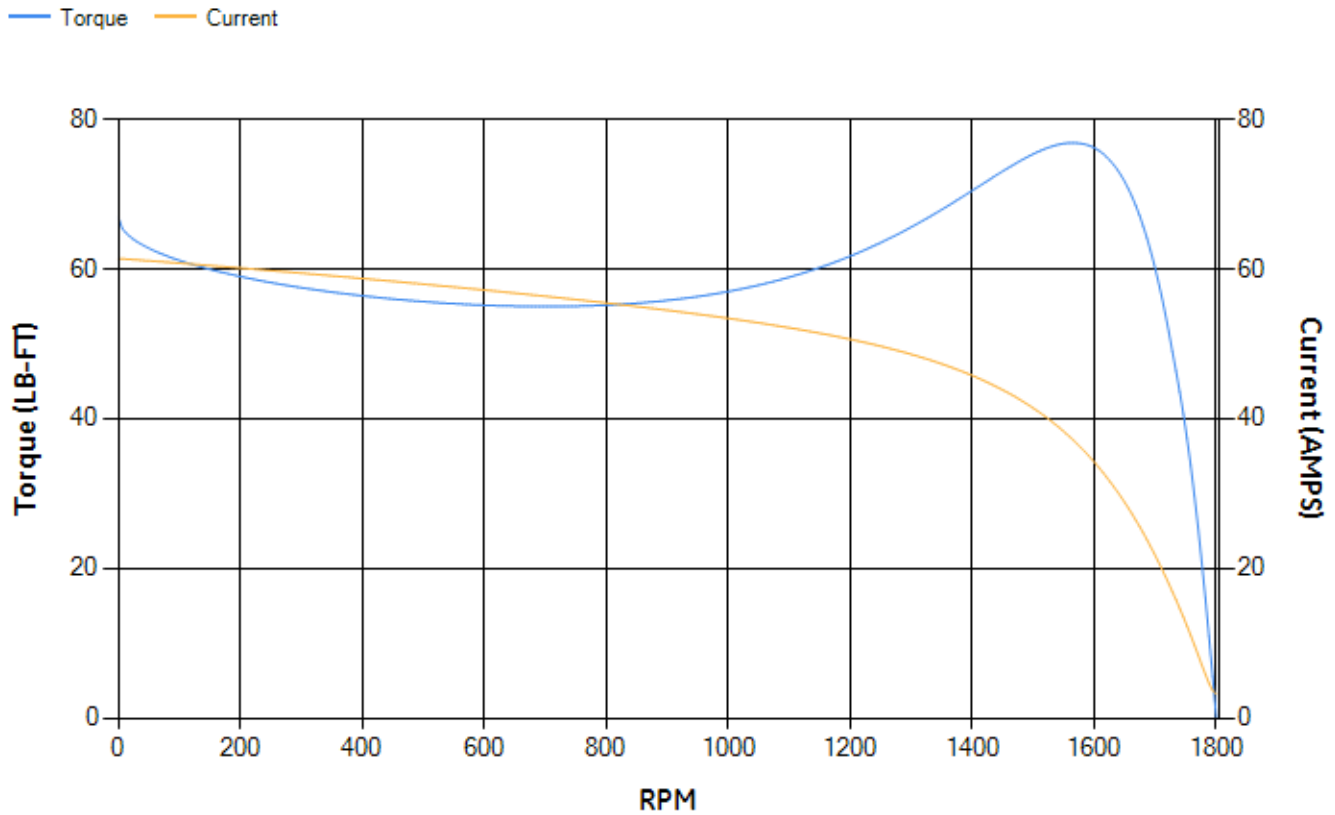
Short Circuit A-C: 0.016

X/R Ratio: 3.984

Stator Slots: 48

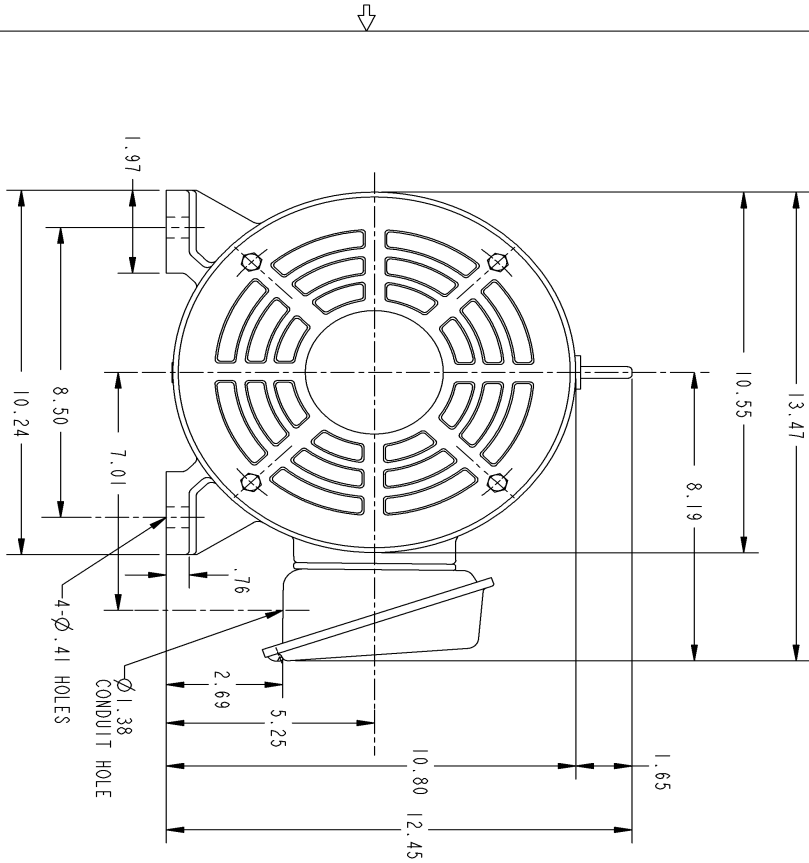
Rotor Slots: 40

Speed Torque Current Curve (First Connection, First Speed)



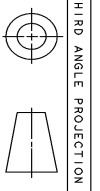
NAME:501452442 OBJECT:358B6215AA DATE:23-May-07 23:10:49

Marks:



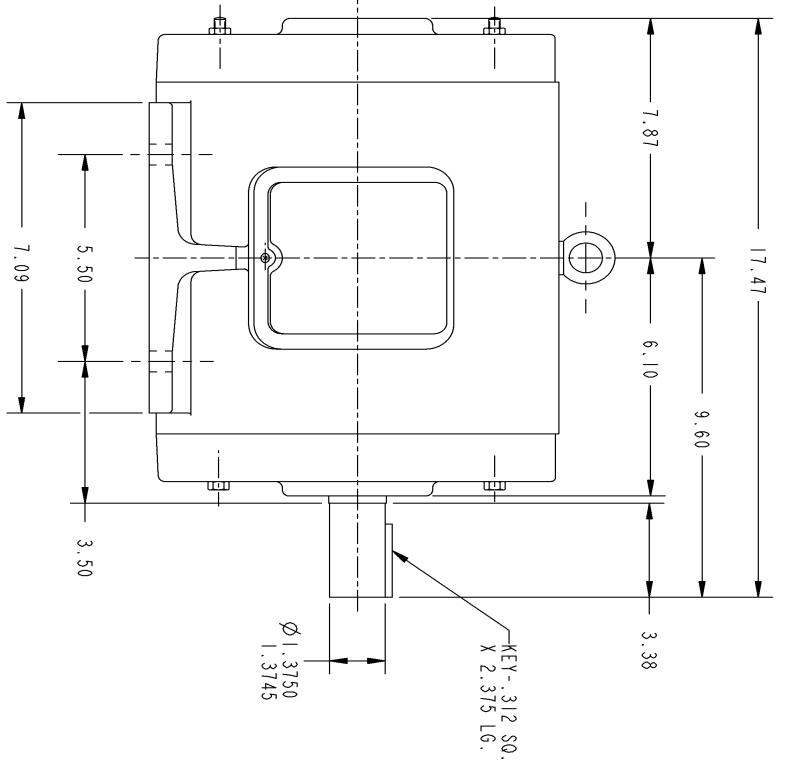
NOTES :

1. CONDUIT BOX MAY BE PLACED WITH THE ENTRANCE DOWN, UP OR ON EITHER SIDE.
2. F-1 ASM AS SHOWN.
3. F-2 ASM - HAS CONDUIT BOX ON OPPOSITE SIDE.



SIZE DRAWING FOR
358B6215AA
 GE PROPRIETARY INNOVATION

REV.	DESCRIPTION	DATE	APPROVED
1	ISAAC 07-0770	05/02/07	R. KOHNE



UNLESS OTHERWISE SPECIFIED:		SIGNATURES		DATE	
DIMENSIONS ARE IN INCHES		DRAWN		P. RAJU 03/27/03	
TOLERANCE ON:		CHECKED		PRASHANKAR 03/27/03	
2 PL DECIMALS ± .		ENGRS			
3 PL DECIMALS ± .		ISSUED		PRASHANKAR 03/27/03	
ANGLES ± 1°		APPLIED PRACTICES			
MATERIAL:		SIZE/DRAWING		REV	
		B		1	
SCALE: DRAWING SCALE		GENERAL ELECTRIC COMPANY		APPROVED	
		Systems		R. KOHNE	
		Fort Wayne, Indiana		DATE	
		OUTLINE		05/02/07	
		213T - OPEN DRIP PROOF		DESCRIPTION	
		358B6215AA		ISAAC 07-0770	
		SHEET 1 OF 1		REV	
				1	

DISTRIBUTION:

Marks:

Connection Diagram
GEM2034E-FIG7

