

Product Information Packet

January 12, 2017

Data shown is for the current revision model #. Ensure your nameplate model # matches.

Model Number:	5KS511SAA375A
Catalog Number:	Q5003
Instruction Manual:	GEI-56128
Connection Diagram:	GEM2034E-FIG20
Outline Drawing:	239C6B00MK

Accessory Connection Diagrams			
Bearing Thermocouple:	None	Heater:	3027JE-1C
RTD:	None	Thermistor:	None
Thermostat:	None	Winding Thermocouple:	None
Bearing RTD:	None		

Table of Contents	
Specification	01
Performance Characteristics	02
Outline Drawing	03
Connection Drawing(s)	04

Marks:

MODEL NUMBER:	5KS511SAA375A	Estimated Weight:	5800 Lbs
Outline Drawing:	239C6B00MK	Time Rating:	CONT
Connection Diagram:	GEM2034E-FIG20	Enclosure:	TEFC
Instruction Book:	GEI-56128	Encl Construction:	SD
Design Code:	50BD3089A	Ambient Max(°C):	40
Type:	KS	Alt Ambient Max(°C):	--
Frame:	5011LL	Insulation Class:	F
Phases:	3	NEMA Design:	--
Poles:	6	Nominal Efficiency:	96.2 %
Output Power:	450HP 333KW	Guaranteed Efficiency:	95.4
RPM:	1190	3/4 Load Efficiency:	96.4
Voltage:	460	KVA Code:	G
Hertz:	60	Max KVAR:	108.1
Amps - FL:	506.0	Power Factor:	86.5
Service Factor:	1.15	Bearing - DE:	6320ZC3
Alt Service Factor:	--	Bearing - ODE:	6315ZC3

Enclosure is Totally Enclosed Fan-Cooled

Stamped Nameplate Notes:

HTR LDS HE1-HE2 115V 350W
 INVERTER DUTY PER NEMA MG1 PART 31
 ALTERNATE RATING FOR PWM CONTROL:1.0SF 40C AMBIENT
 VAR TORQUE RANGE 0-60 HZ
 FOR DIRECT COUPLED LOAD ONLY

Additional Information:

6P - LL EXTN - SPLIT LEAD
 2500 CU IN - 2(4.00" NPT)
 C/B GRD PLATE
 115V HTR LDS TO AUX BOX OPP MAIN CONDUIT BOX
 SPACE HEATER CAUTION NAMEPLATE
 NEMA TYPE GRD PAD
 F1 MOUNTING
 PROVISION FOR BTD ON BOTH ENDS PLUGGED

Performance Characteristics

1st Winding 1st Connection

Design: 50BD3089A

Marks:

LOAD %	125.0	115.0	100.0	75.0	50.0	25.0	0.0
% EFF	95.44	95.7	96.24	96.42	96.41	95.04	0.00
% PF	86.55	86.62	86.3	84.06	77.27	56.99	3
AMPS	637.36	584.28	507.32	389.73	282.65	194.39	150.78

TORQ(FL)#FT 1987.04
AMPS(LR) 3015

TORQ(LR)%FL 104.11
PF AT START 0.21

TORQ(BD)%FL 248.27

This motor is capable of two cold or one hot start with a maximum connected load inertia of 19844 Lb-Ft Sq (835.43 Kg-meter Sq)at 100% voltage, where the load torque varies with the square of the speed. Acceleration time with maximum inertia and the above load type is 48 seconds. Safe stall time at 100% voltage is 103 seconds cold, 57 seconds hot. Rotor inertia is 277.14 Lb-Ft Sq (11.67 Kg-meter Sq).

Open Circuit A-C: 0.969

Short Circuit D-C: 0.041

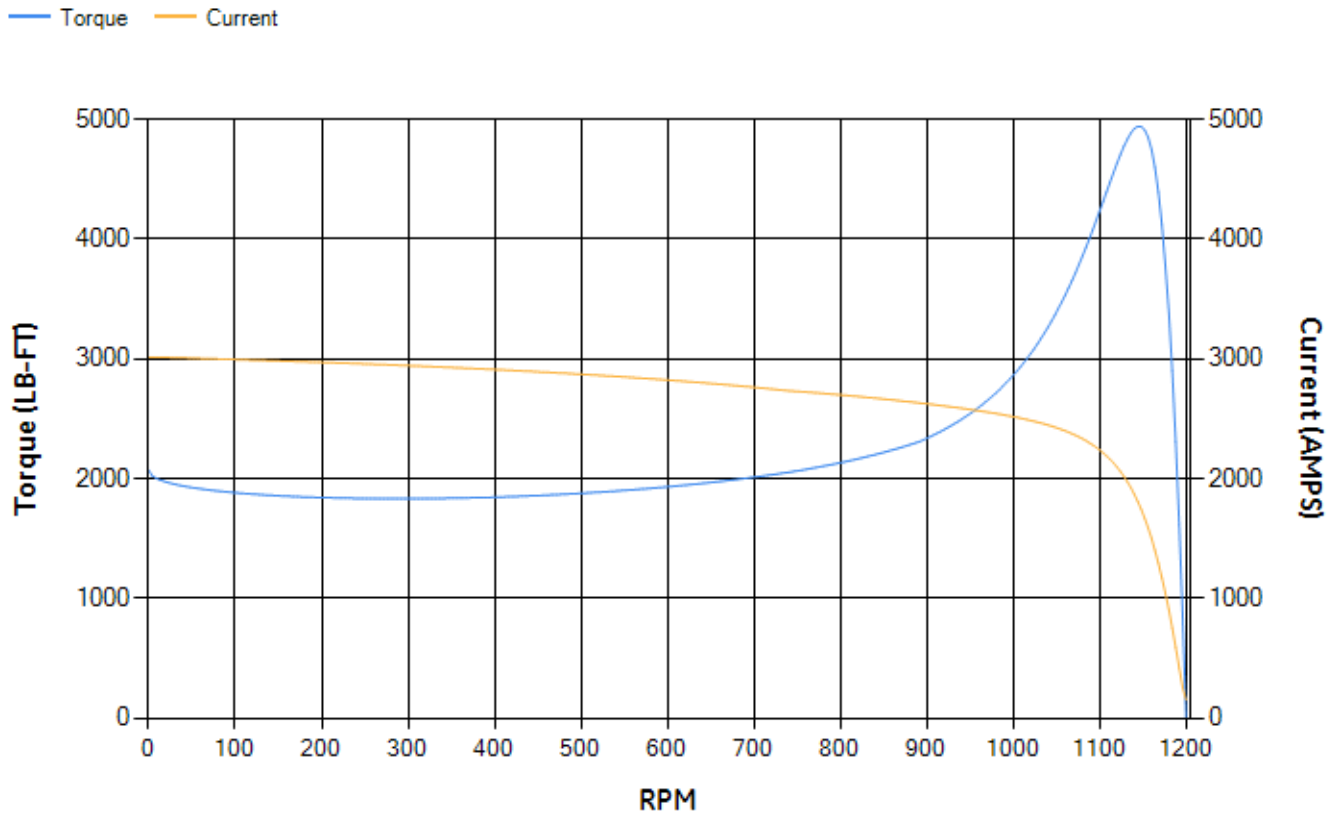
Short Circuit A-C: 0.046

X/R Ratio: 15.377

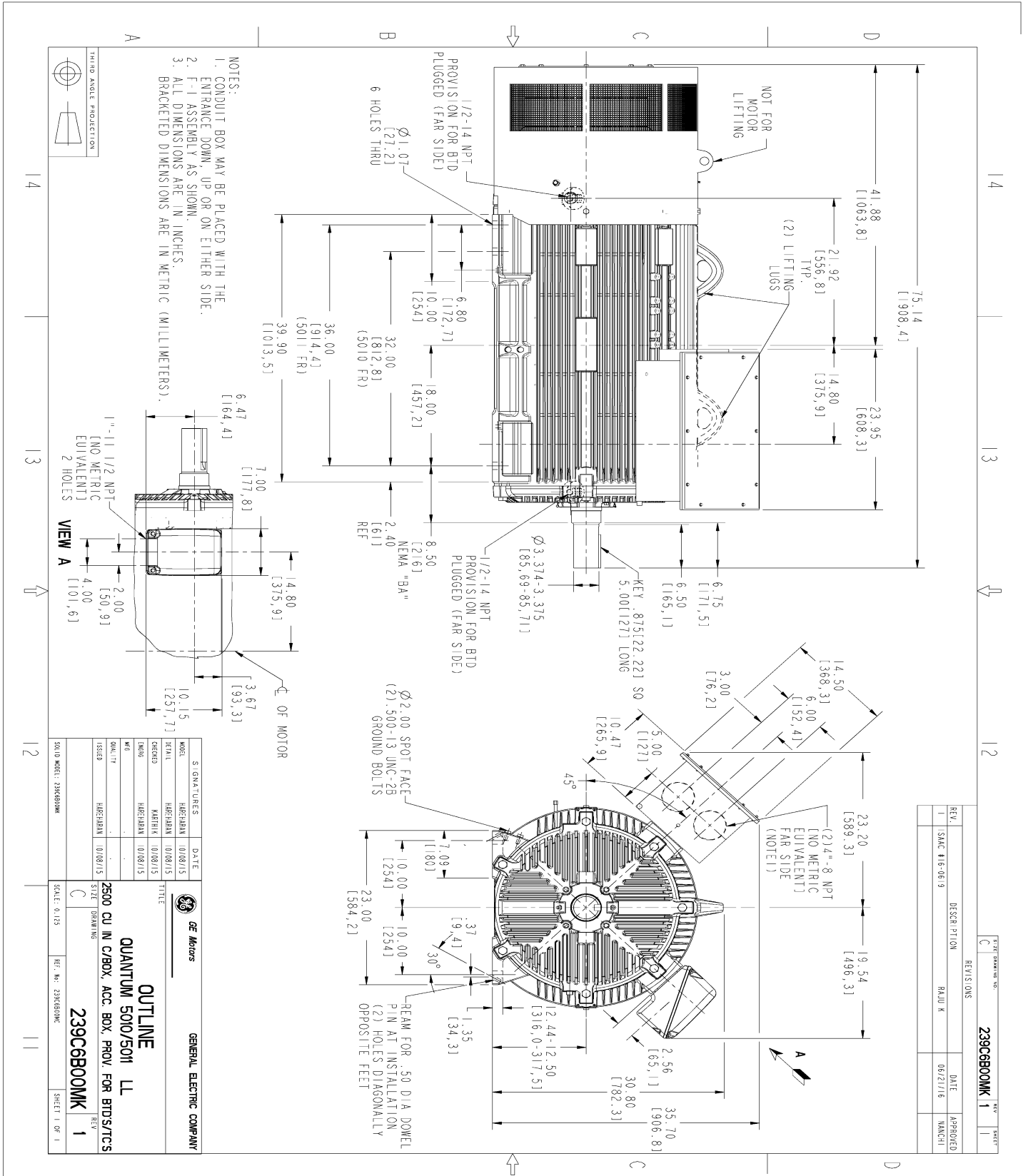
Stator Slots: 72

Rotor Slots: 58

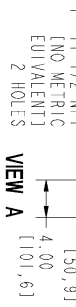
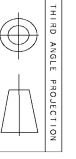
Speed Torque Current Curve (First Connection, First Speed)



Marks:



- NOTES:
1. CONDUIT BOX MAY BE PLACED WITH THE ENTRANCE DOWN, UP OR ON EITHER SIDE.
 2. F-1 ASSEMBLY AS SHOWN.
 3. ALL DIMENSIONS ARE IN INCHES. BRACKETED DIMENSIONS ARE IN METRIC (MILLIMETERS).



SIGNATURES		DATE	
MODEL	HAEHRMAN	DATE	01/08/15
SCALE	HAEHRMAN	TITLE	
CHECKED	MATHIA	01/08/15	
DESIGN	HAEHRMAN	01/08/15	
ISSUED	HAEHRMAN	01/08/15	

GENERAL ELECTRIC COMPANY

OUTLINE

QUANTUM 5010/5011 LL

2500 CU IN C/BOX, ACC. BOX, PROV. FOR BTDS/TCS

239C6B00MK

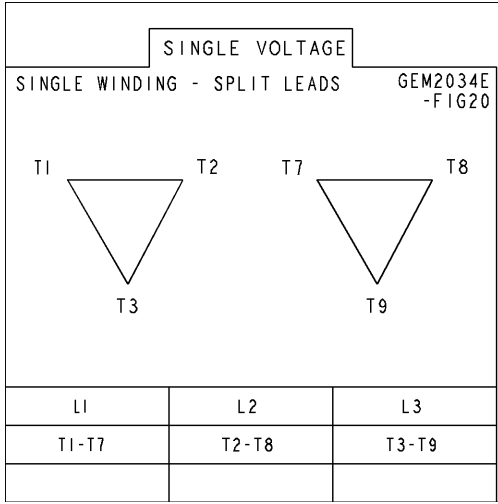
SCALE: 0.125 REF. NO. 239S60MK

REV.	DESCRIPTION	DATE	APPROVED
1	SAC #16-06-9	05/21/16	MANCH

REV. 1 SHEET 1

Marks:

Connection Diagram
GEM2034E-FIG20



Heater Connection
3027JE-1C

