

# Product Information Packet

November 9, 2016

Data shown is for the current revision model #. Ensure your nameplate model # matches.

<b>Model Number:</b>	<b>5KS447SAA204D6</b>
<b>Catalog Number:</b>	<b>M9959</b>
<b>Instruction Manual:</b>	GEI-56128
<b>Connection Diagram:</b>	GEM2034E-FIG7
<b>Outline Drawing:</b>	239C6800AA

<b>Accessory Connection Diagrams</b>			
<b>Bearing Thermocouple:</b>	None	<b>Heater:</b>	None
<b>RTD:</b>	None	<b>Thermistor:</b>	None
<b>Thermostat:</b>	None	<b>Winding Thermocouple:</b>	None
<b>Bearing RTD:</b>	None		

## Table of Contents

Specification	01
Performance Characteristics	02
Outline Drawing	03
Connection Drawing(s)	04
Spare parts	05



**Marks:**

<b>MODEL NUMBER:</b>	<b>5KS447SAA204D6</b>	<b>Estimated Weight:</b>	2770 Lbs
<b>Outline Drawing:</b>	239C6800AA	<b>Time Rating:</b>	CONT
<b>Connection Diagram:</b>	GEM2034E-FIG7	<b>Enclosure:</b>	TEFC
<b>Instruction Book:</b>	GEI-56128	<b>Encl Construction:</b>	X\$D
<b>Design Code:</b>	49BD1177B	<b>Ambient Max(°C):</b>	40
<b>Type:</b>	KS	<b>Alt Ambient Max(°C):</b>	60
<b>Frame:</b>	447T	<b>Insulation Class:</b>	H
<b>Phases:</b>	3	<b>NEMA Design:</b>	B
<b>Poles:</b>	4	<b>Nominal Efficiency:</b>	96.2 %
<b>Output Power:</b>	200HP 148KW	<b>Guaranteed Efficiency:</b>	95.8
<b>RPM:</b>	1790	<b>3/4 Load Efficiency:</b>	96.5
<b>Voltage:</b>	575	<b>KVA Code:</b>	G
<b>Hertz:</b>	60	<b>Max KVAR:</b>	42.6
<b>Amps - FL:</b>	175.0	<b>Power Factor:</b>	89.0
<b>Service Factor:</b>	1.15	<b>Bearing - DE:</b>	6318ZC3
<b>Alt Service Factor:</b>	1.00	<b>Bearing - ODE:</b>	6318ZC3

**Enclosure is Totally Enclosed Fan-Cooled**

**Stamped Nameplate Notes:**

STAMP NP249A5564P051 AS BELOW:  
 MODEL:5KS447SAA204D6 S/N: XXX  
 CSA CERTIFIED CSA09.2216219 FOR EX NA IIC 215 C GC  
 CL 1 ZONE2 AEX NA IIC ---C;CL 1 DIV2 GRP ABCD 215C  
 IN -40C <= AMB <= 40C, 1.0 SF ON SINE-WAVE PWR  
 SURF TEMP 260C AT 1.15SF ON SINE-WAVE PWR  
 OR 215 C VT OR 215 C CT OR 215 C CHP PWM CONTROL  
 ALTERNATE RATING FOR PWM CONTROL 1.0SF 40C AMB  
 VT 0-60 HZ, CT 45-60 HZ, CHP 60-75 HZ.

**Additional Information:**

4P - T EXTN  
 700 CU IN - 3.00" NPT  
 OIL RESISTANT SLEEVING ON LEADS  
 F1 MOUNTING

**Performance Characteristics**

1st Winding 1st Connection

**Design: 49BD1177B**

**Marks:**

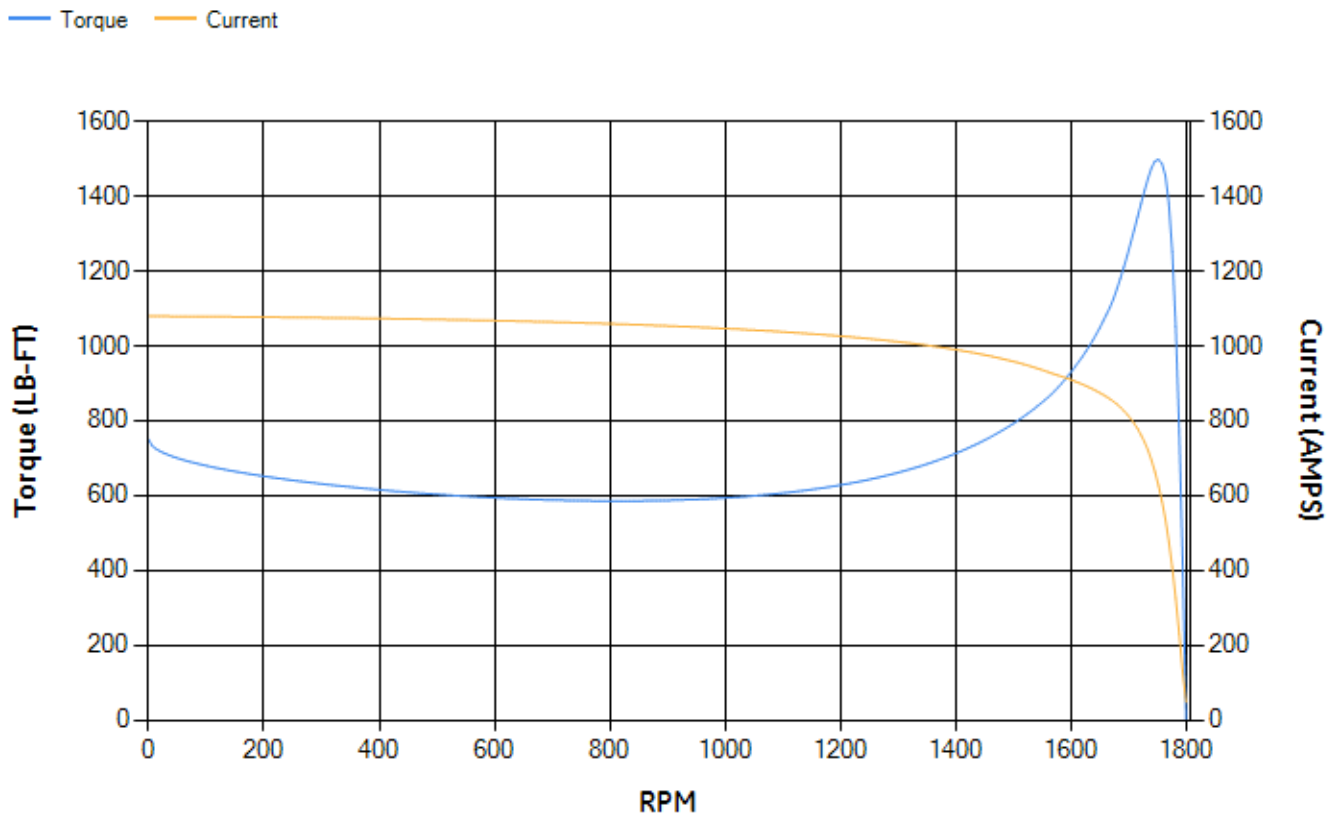
LOAD %	125.0	115.0	100.0	75.0	50.0	25.0	0.0
% EFF	95.53	95.78	96.31	96.5	96.53	95.28	0.00
% PF	89.22	89.21	88.86	86.85	80.78	61.45	3.12
AMPS	219.64	201.55	174.99	134.01	96.02	63.95	47.58

<b>TORQ(FL)#FT</b>	586.61	<b>TORQ(LR)%FL</b>	127.72	<b>TORQ(BD)%FL</b>	255.22
<b>AMPS(LR)</b>	1079.25	<b>PF AT START</b>	0.25		

This motor is capable of two cold or one hot start with a maximum connected load inertia of 4687 Lb-Ft Sq (197.32 Kg-meter Sq)at 100% voltage, where the load torque varies with the square of the speed. Acceleration time with maximum inertia and the above load type is 55 seconds. Safe stall time at 100% voltage is 168 seconds cold, 86 seconds hot. Rotor inertia is 106.11 Lb-Ft Sq (4.47 Kg-meter Sq).

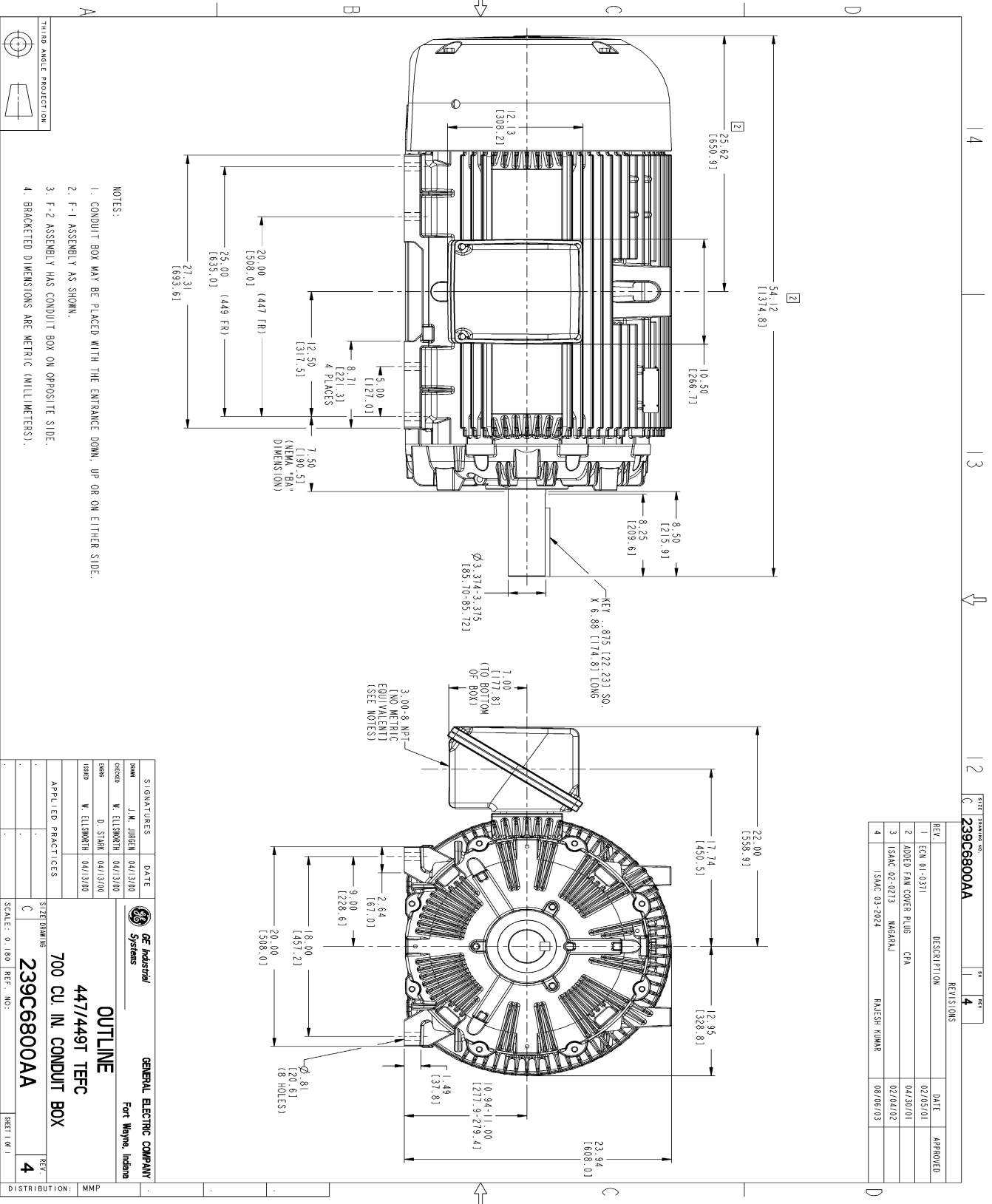
<b>Open Circuit A-C:</b>	1.752	<b>Short Circuit D-C:</b>	0.027
<b>Short Circuit A-C:</b>	0.07	<b>X/R Ratio:</b>	10.288
<b>Stator Slots:</b>	72	<b>Rotor Slots:</b>	58

**Speed Torque Current Curve (First Connection, First Speed)**



NAME: 103016807 OBJECT: 239C6800AA DATE: 08-Aug-03 12:01:27

Marks:

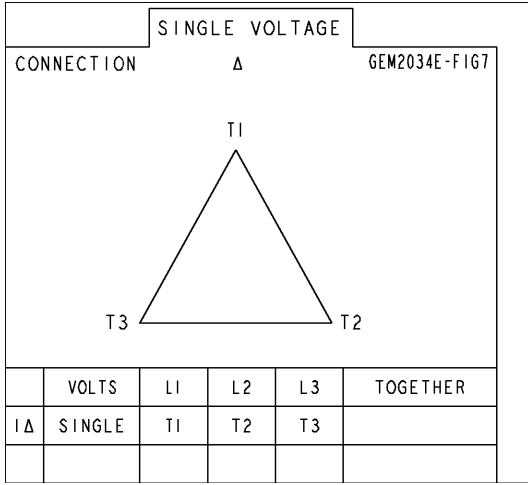


REV.	DESCRIPTION	DATE	APPROVED
1	ECN 01-0371	02/05/01	
2	CODED FAN COVER PLUG CFA	04/30/01	
3	ISSAC 02-0213 MARGAJ	02/04/02	
4	ISSAC 03-2024 RAJESH KUMAR	08/06/03	

SIGNATURES	DATE	GENERAL ELECTRIC COMPANY Fort Wayne, Indiana
DESIGNER J.M. JOHNSON	04/13/00	<b>OUTLINE</b> <b>447/449T TEFC</b> <b>700 CU. IN. CONDUIT BOX</b> <b>239C6800AA</b>
CHECKED W. ELLSWORTH	04/13/00	
DRAWN D. STARK	04/13/00	
ISSUED W. ELLSWORTH	04/13/00	
APPLIED PRACTICES		
SCALE: 0.180	REF. NO.:	
SHEET NO. 1		
DISTRIBUTION: MMP		

Marks:

**Connection Diagram**  
**GEM2034E-FIG7**



End shield Assembly		
Part Description	DE Side Part#	ODE Side Part#
End Shield	115E4355AA1	115E4355LM1
Bearing	235A2514AG01	235A2514AG01
Slinger/Inproseal	149C4399G07	149C4399G07

Fan & Fan Cover Assembly	
Part Description	Part#
Fan	159C7100AA2
Fan Cover	128D6841AA1

Conduit & Accessories Box Assembly	
Part Description	Part#
Conduit Box	118D4408AD2

Mechanical Accessories	
Part Description	Part#
Brake	
Tachometer	