

Product Information Packet

January 13, 2017

Data shown is for the current revision model #. Ensure your nameplate model # matches.

Model Number:	5KS405DAJ7008A
Catalog Number:	V4608
Instruction Manual:	GEK-95353
Connection Diagram:	GEM2034E-FIG19
Outline Drawing:	148CB40VMHKCCAA0001

Accessory Connection Diagrams			
Bearing Thermocouple:	None	Heater:	3027JE-1C
RTD:	None	Thermistor:	None
Thermostat:	None	Winding Thermocouple:	None
Bearing RTD:	None		

Table of Contents

Specification	01
Performance Characteristics	02
Outline Drawing	03
Connection Drawing(s)	04
Spare parts	05



Marks:

MODEL NUMBER:	5KS405DAJ7008A	Estimated Weight:	1350 Lbs
Outline Drawing:	148CB40VMHKCCAA0001	Time Rating:	CONT
Connection Diagram:	GEM2034E-FIG19	Enclosure:	WPI
Instruction Book:	GEK-95353	Encl Construction:	OPEN
Design Code:	40BD3076A	Ambient Max(°C):	40
Type:	KS	Alt Ambient Max(°C):	--
Frame:	L405TP16	Insulation Class:	H
Phases:	3	NEMA Design:	B
Poles:	6	Nominal Efficiency:	94.5 %
Output Power:	75HP 55.5KW	Guaranteed Efficiency:	93.6
RPM:	1190	3/4 Load Efficiency:	94.9
Voltage:	460	KVA Code:	G
Hertz:	60	Max KVAR:	28.8
Amps - FL:	92.9	Power Factor:	80.0
Service Factor:	1.15	Bearing - DE:	6215C3
Alt Service Factor:	--	Bearing - ODE:	235A2532AA01

Enclosure is Weather Protected One

Stamped Nameplate Notes:

HTR LDS HE1-HE2 115V 100W
 ROT CCW FACING ODE LEAD/PH SEQ 1-2-3/1-2-3
 INVERTER DUTY PER NEMA MG1 PART 31
 ALTERNATE RATING FOR PWM CONTROL:1.0SF 40C AMBIENT
 VAR TORQUE RANGE 8-60 HZ
 SUITABLE FOR 60 HP, 380V 50HZ WITH
 109 AMPS AND 985 RPM AT 1.0 SF

Additional Information:

6 POLE,VERT HOLLOW SHAFT HIGH THRUST (1D)
 SPECIAL BALANCE
 700 CU IN - 3.00" NPT
 BEARING LIFE 8760 HRS AT 7800 LB THRUST
 OIL RESISTANT SLEEVING ON LEADS
 115V HTR LDS TO MAIN CONDUIT BOX
 COUPLING NOT INCLUDED IN BOM, WILL BE
 ORDERED SEPERATELY
 PART WINDING START
 CG: 18.30 IN FROM P-BASE FACE
 RCF: 3240 CPM AT C/BOX SIDE, 3780 CPM AT
 90 DEG FROM C/ BOX SIDE

Performance Characteristics

1st Winding 1st Connection

Design: 40BD3076A

Marks:

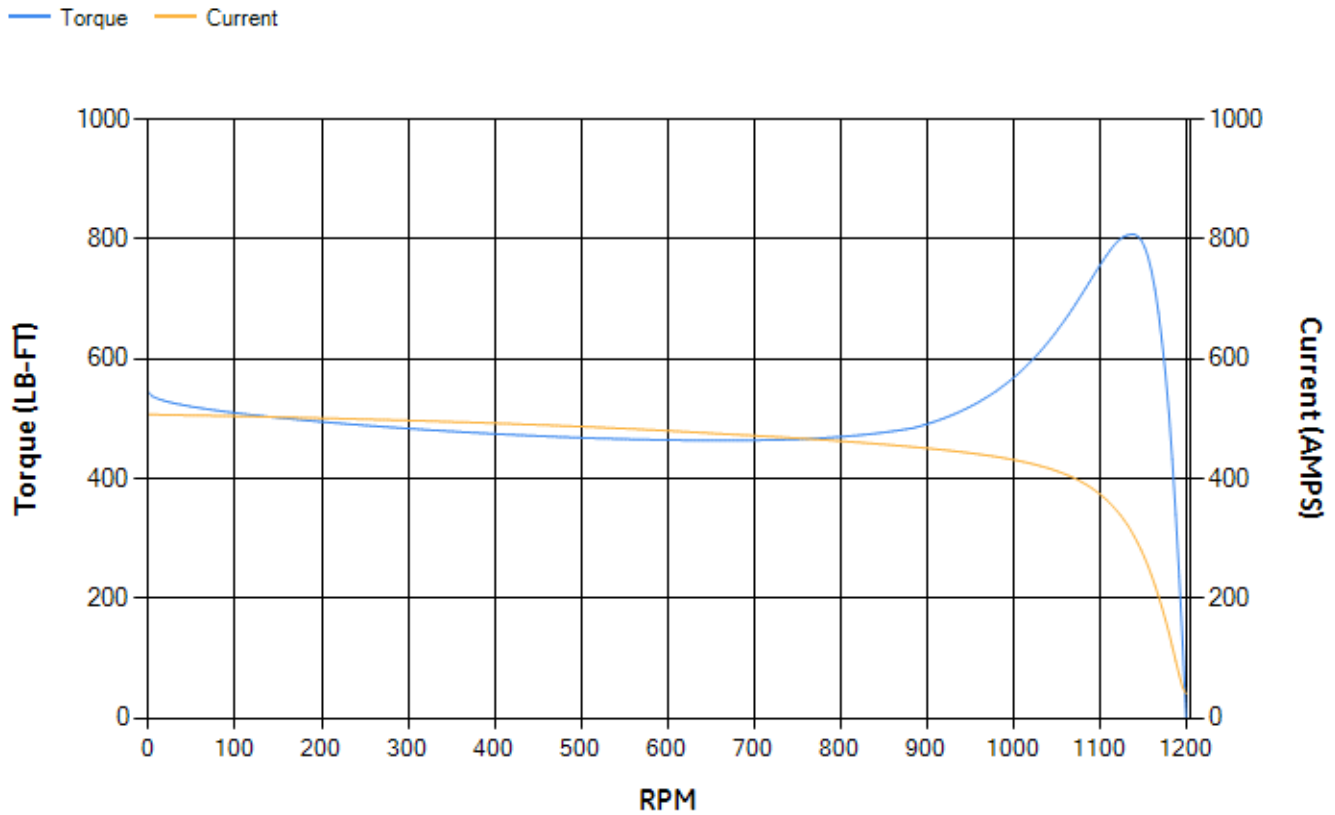
LOAD %	125.0	115.0	100.0	75.0	50.0	25.0	0.0
% EFF	93.76	94.08	94.68	94.89	94.69	92.37	0.00
% PF	82.21	81.6	80.08	75.05	64.23	41.64	2.85
AMPS	113.83	105.15	92.4	73.92	57.71	45.62	40.16

TORQ(FL)#FT	331.33	TORQ(LR)%FL	164.16	TORQ(BD)%FL	243.04
AMPS(LR)	506.9	PF AT START	0.35		

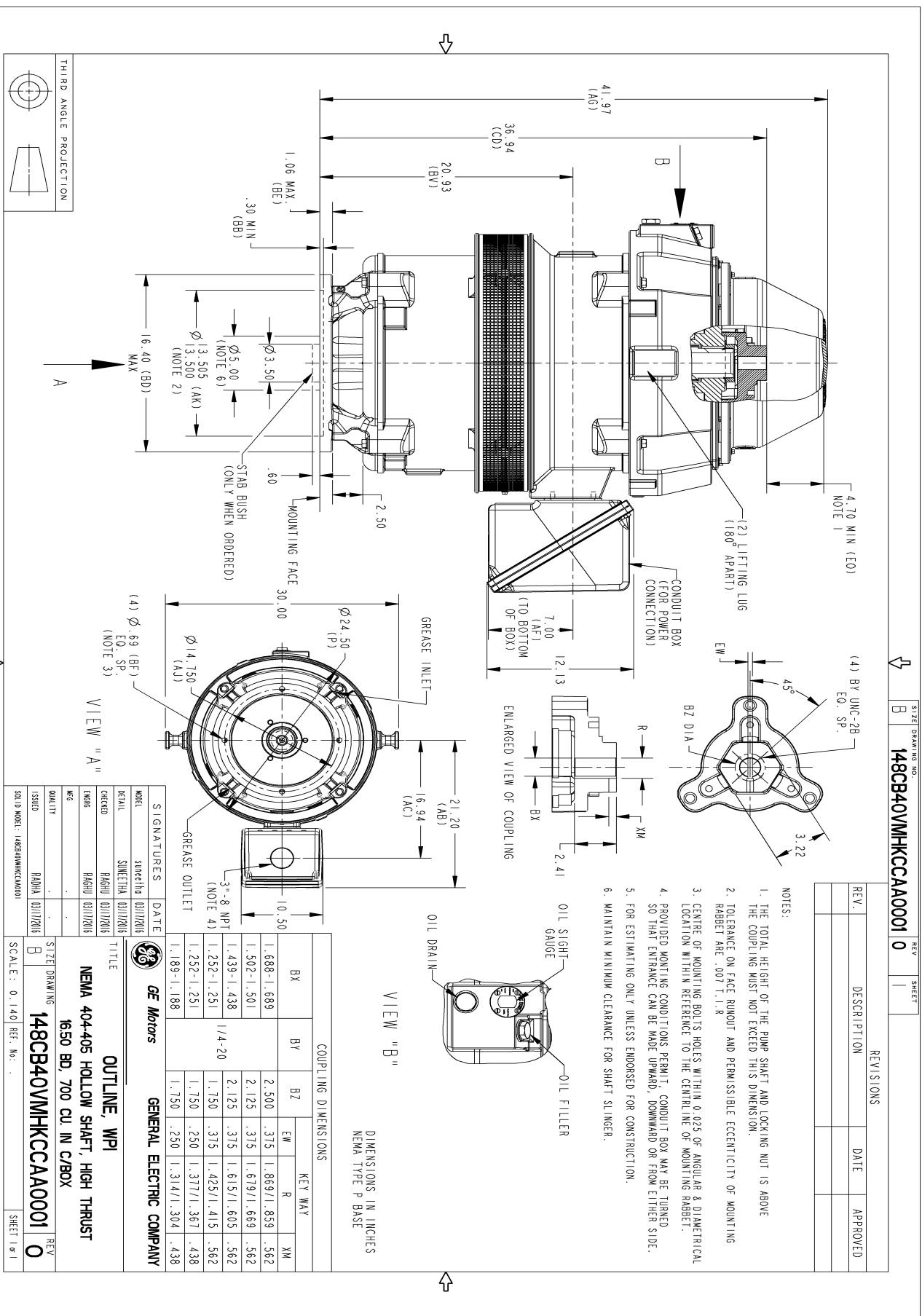
This motor is capable of two cold or one hot start with a maximum connected load inertia of 5150 Lb-Ft Sq (216.82 Kg-meter Sq)at 100% voltage, where the load torque varies with the square of the speed. Acceleration time with maximum inertia and the above load type is 50 seconds. Safe stall time at 100% voltage is 100 seconds cold, 66 seconds hot. Rotor inertia is 27.38 Lb-Ft Sq (1.15 Kg-meter Sq).

Open Circuit A-C:	0.596	Short Circuit D-C:	0.021
Short Circuit A-C:	0.041	X/R Ratio:	7.825
Stator Slots:	72	Rotor Slots:	58

Speed Torque Current Curve (First Connection, First Speed)



Marks:



SIZE DRAWING NO. B
148CB40VMHKCCAA0001 0

REV SHEET 1

REV.	DESCRIPTION	DATE	APPROVED

- NOTES:
- THE TOTAL HEIGHT OF THE PUMP SHAFT AND LOCKING NUT IS ABOVE THE COUPLING MUST NOT EXCEED THIS DIMENSION.
 - TOLERANCE ON FACE RUNOUT AND PERMISSIBLE ECCENTRICITY OF MOUNTING RABBET ARE .007 T.I.R
 - CENTRE OF MOUNTING BOLTS HOLES WITHIN 0.025 OF ANGULAR & DIAMETRICAL LOCATION WITH REFERENCE TO THE CENTRELINE OF MOUNTING RABBET.
 - PROVIDED MOUNTING CONDITIONS PERMIT, CONDUIT BOX MAY BE TURNED SO THAT ENTRANCE CAN BE MADE UPWARD, DOWNWARD OR FROM EITHER SIDE.
 - FOR ESTIMATING ONLY UNLESS ENDORSED FOR CONSTRUCTION.
 - MAINTAIN MINIMUM CLEARANCE FOR SHAFT SLINGER.

COUPLING DIMENSIONS

	BX		BY		BZ		KEY WAY					
	EW	R	EW	R	EW	R	EW	R	XW			
1.688-1.689	2.500	.375	1.869/1.859	.562	2.125	.375	1.679/1.669	.562	2.125	.375	1.615/1.605	.562
1.439-1.438	1.750	.375	1.425/1.415	.562	1.750	.375	1.425/1.415	.562	1.750	.250	1.377/1.367	.438
1.252-1.251	1.750	.250	1.377/1.367	.438	1.750	.250	1.377/1.367	.438	1.750	.250	1.314/1.304	.438

DIMENSIONS IN INCHES
NEMA TYPE P BASE

SIGNATURES

MODEL	DATE	DATE
5KS405DAJ7008A	03/11/2016	03/11/2016
5KS405DAJ7008A	03/11/2016	03/11/2016
5KS405DAJ7008A	03/11/2016	03/11/2016
5KS405DAJ7008A	03/11/2016	03/11/2016
5KS405DAJ7008A	03/11/2016	03/11/2016
5KS405DAJ7008A	03/11/2016	03/11/2016

GE Motors GENERAL ELECTRIC COMPANY

TITLE
OUTLINE, WPI
NEMA 404-405 HOLLOW SHAFT- HIGH THRUST
1650 BD, 700 CU IN C/BOX

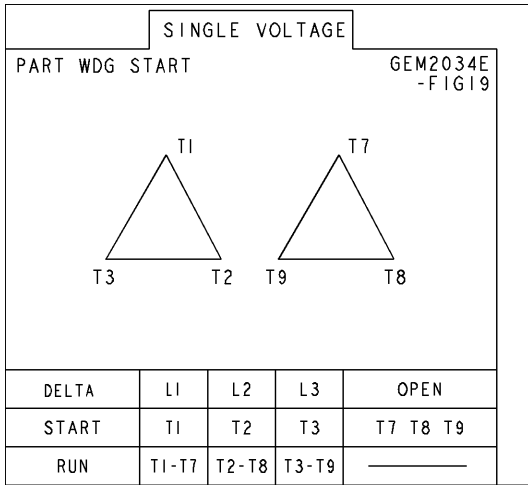
SCALE: 0.140 REF. No.

SIZE DRAWING 148CB40VMHKCCAA0001 0

REV SHEET 1

Marks:

Connection Diagram
GEM2034E-FIG19



Heater Connection
3027JE-1C



End shield Assembly		
Part Description	DE Side Part#	ODE Side Part#
End Shield	115E7306AC1	115E7310LA1
Bearing	235A2513AL01	235A2532AA01
Slinger/Inproseal	235A2300HW1	

Fan & Fan Cover Assembly	
Part Description	Part#
Fan	
Fan Cover	149C4055AA1

Conduit & Accessories Box Assembly	
Part Description	Part#
Conduit Box	118D4408AD2

Mechanical Accessories	
Part Description	Part#
Brake	
Tachometer	

