

Product Information Packet

November 9, 2016

Data shown is for the current revision model #. Ensure your nameplate model # matches.

Model Number:	5KS405LAA304D
Catalog Number:	M7959
Instruction Manual:	GEI-56128
Connection Diagram:	GEM2034E-FIG1
Outline Drawing:	239CC400AA

Accessory Connection Diagrams			
Bearing Thermocouple:	None	Heater:	None
RTD:	None	Thermistor:	None
Thermostat:	None	Winding Thermocouple:	None
Bearing RTD:	None		

Table of Contents	
Specification	01
Performance Characteristics	02
Outline Drawing	03
Connection Drawing(s)	04

Marks:

MODEL NUMBER:	5KS405LAA304D	Estimated Weight:	1430 Lbs
Outline Drawing:	239CC400AA	Time Rating:	CONT
Connection Diagram:	GEM2034E-FIG1	Enclosure:	TEFC
Instruction Book:	GEI-56128	Encl Construction:	SD
Design Code:	40BD3055B	Ambient Max(°C):	40
Type:	KS	Alt Ambient Max(°C):	--
Frame:	405T	Insulation Class:	F
Phases:	3	NEMA Design:	A
Poles:	6	Nominal Efficiency:	94.5 %
Output Power:	75HP 55.5KW	Guaranteed Efficiency:	93.6
RPM:	1190	3/4 Load Efficiency:	94.6
Voltage:	575	KVA Code:	G
Hertz:	60	Max KVAR:	29.1
Amps - FL:	73.8	Power Factor:	80.5
Service Factor:	1.15	Bearing - DE:	6316ZC3S0
Alt Service Factor:	--	Bearing - ODE:	6316ZC3S0

Enclosure is Totally Enclosed Fan-Cooled

Stamped Nameplate Notes:

INVERTER DUTY PER NEMA MG1 PART 31
 ALTERNATE RATING FOR PWM CONTROL:1.0SF 40C AMBIENT
 VAR TORQUE RANGE 0-60 HZ

Additional Information:

6P - T EXTN
 700 CU IN - 3.00" NPT
 OIL RESISTANT SLEEVING ON LEADS
 F1 MOUNTING
 VIBRATION LIMIT 0.15 INCH PER SEC

Performance Characteristics

1st Winding 1st Connection

Design: 40BD3055B

Marks:

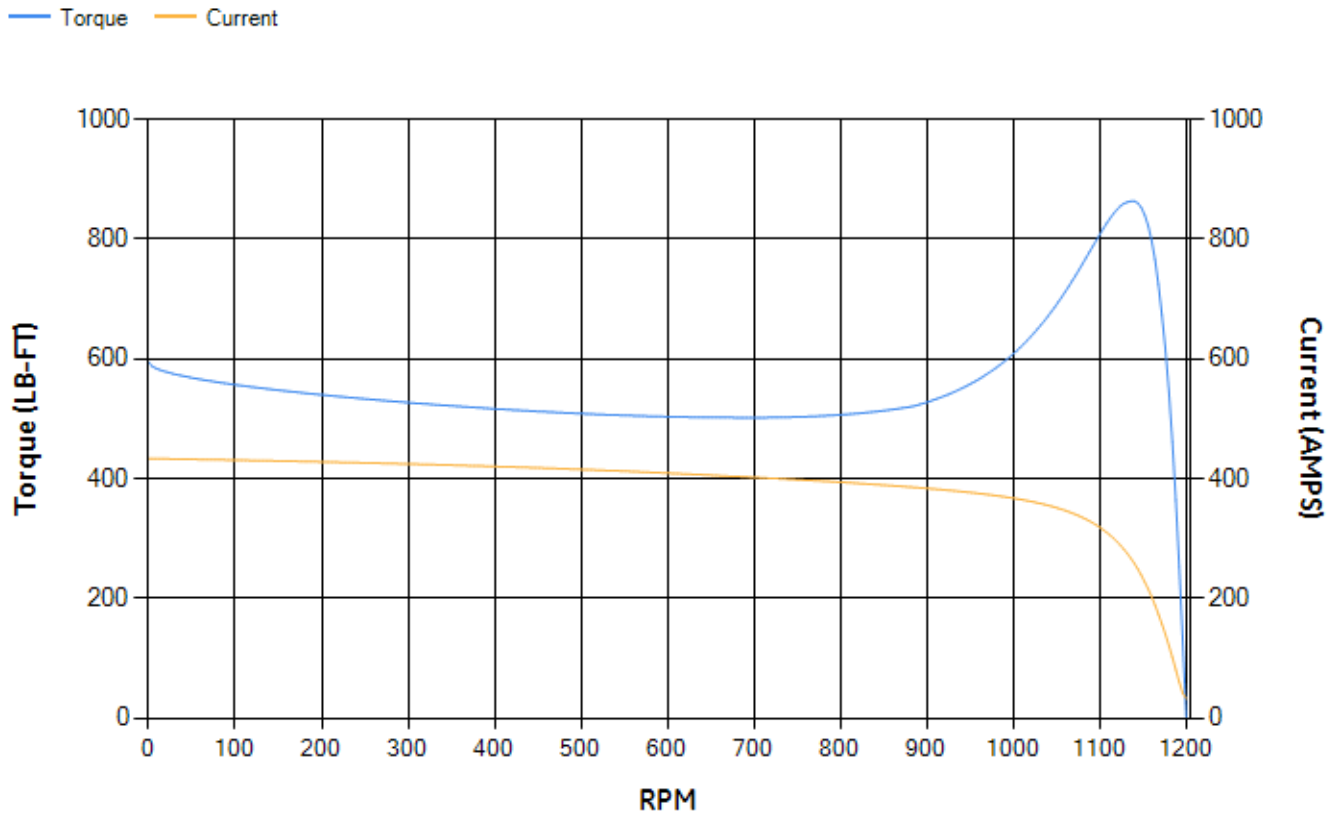
LOAD %	125.0	115.0	100.0	75.0	50.0	25.0	0.0
% EFF	93.78	94.05	94.57	94.63	94.21	91.37	0.00
% PF	82.66	81.97	80.34	75.16	64.24	41.74	3.31
AMPS	90.55	83.77	73.76	59.22	46.4	36.81	32.37

TORQ(FL)#FT	331.35	TORQ(LR)%FL	179.38	TORQ(BD)%FL	259.69
AMPS(LR)	433.35	PF AT START	0.35		

This motor is capable of two cold or one hot start with a maximum connected load inertia of 4913 Lb-Ft Sq (206.84 Kg-meter Sq)at 100% voltage, where the load torque varies with the square of the speed. Acceleration time with maximum inertia and the above load type is 43 seconds. Safe stall time at 100% voltage is 104 seconds cold, 56 seconds hot. Rotor inertia is 30.95 Lb-Ft Sq (1.3 Kg-meter Sq).

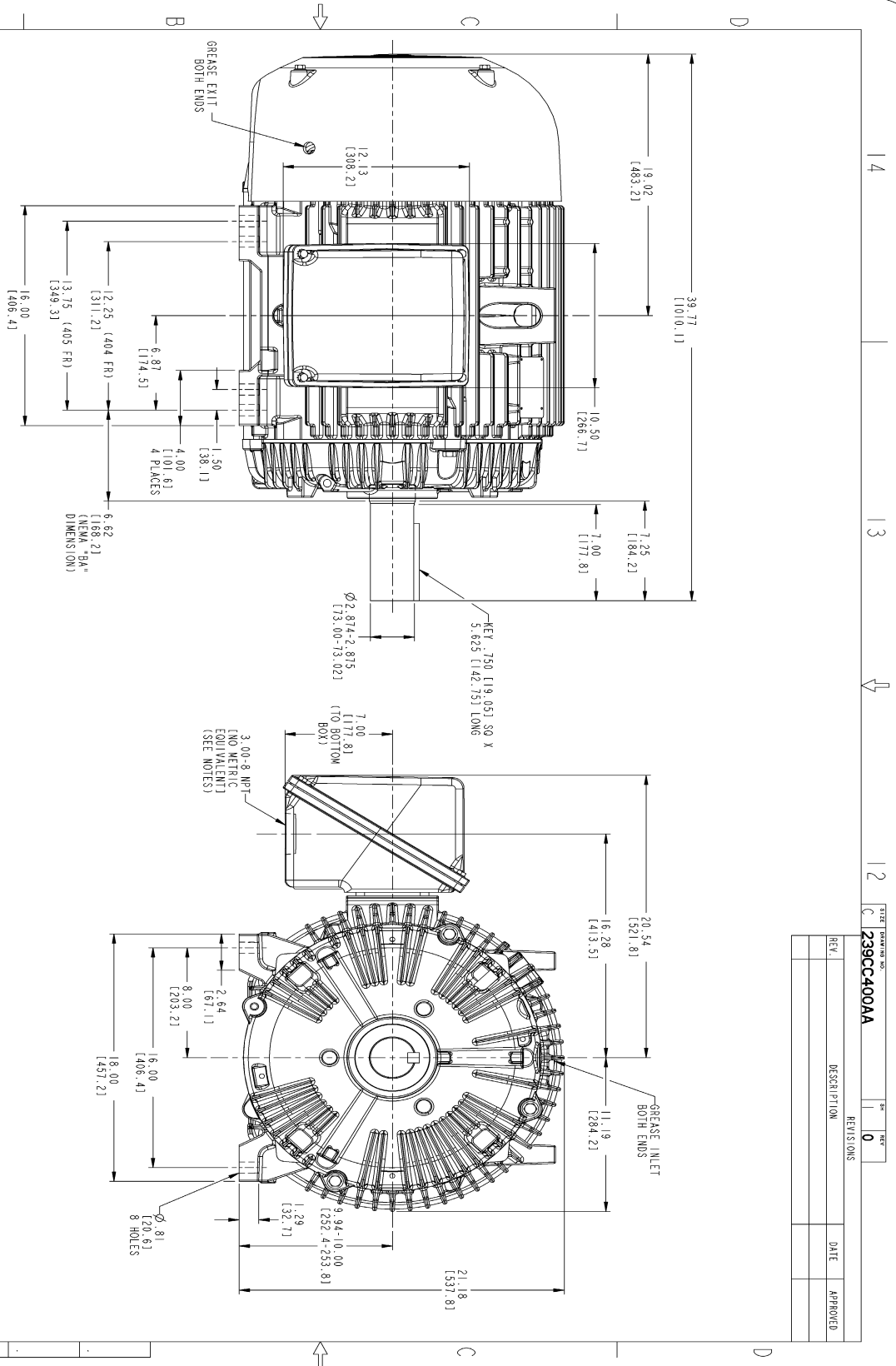
Open Circuit A-C:	0.583	Short Circuit D-C:	0.021
Short Circuit A-C:	0.038	X/R Ratio:	7.787
Stator Slots:	72	Rotor Slots:	58

Speed Torque Current Curve (First Connection, First Speed)

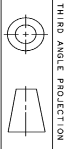


NAME:501352727 OBJECT:239CC400AA DATE:31-Jul-07 12:31:11

Marks:



- NOTES:
1. CONDUIT BOX MAY BE PLACED WITH THE ENTRANCE DOWN, UP OR ON EITHER SIDE.
 2. F-1 ASSEMBLY AS SHOWN.
 3. F-2 ASSEMBLY CONDUIT BOX ON OPPOSITE SIDE.
 4. BRACKETED DIMENSIONS ARE METRIC (MILLIMETERS).



REV.	DESCRIPTION	DATE	APPROVED

SIGNATURES	DATE	 GENERAL ELECTRIC COMPANY Fort Wayne, Indiana
ISSUED	01/21/07	
DESIGNED	01/21/07	OUTLINE 404/405 T TEFC ESP 700 CU. IN. CONDUIT BOX
APPLIED PRACTICES	01/21/07	
SCALE: 0.220 REF. NO.:		SHEET 1 OF 1 REV. 0
DISTRIBUTION: MMP		

Marks:

Connection Diagram
GEM2034E-FIG1

