

Product Information Packet

November 7, 2016

Data shown is for the current revision model #. Ensure your nameplate model # matches.

Model Number:	5KS215ATE205ARG3
Catalog Number:	E7062
Instruction Manual:	GEI-M1023
Connection Diagram:	GEM2034E-FIG10
Outline Drawing:	358B6215AB

Accessory Connection Diagrams			
Bearing Thermocouple:	None	Heater:	None
RTD:	None	Thermistor:	None
Thermostat:	None	Winding Thermocouple:	None
Bearing RTD:	None		

Table of Contents	
Specification	01
Performance Characteristics	02
Outline Drawing	03
Connection Drawing(s)	04

Marks:

MODEL NUMBER:	5KS215ATE205ARG3	Estimated Weight:	188 Lbs
Outline Drawing:	358B6215AB	Time Rating:	CONT
Connection Diagram:	GEM2034E-FIG10	Enclosure:	DP
Instruction Book:	GEI-M1023	Encl Construction:	OPEN
Design Code:	21AD1007A	Ambient Max(°C):	40
Type:	KS	Alt Ambient Max(°C):	--
Frame:	--	Insulation Class:	F
Phases:	3	NEMA Design:	A
Poles:	4	Nominal Efficiency:	91.7 %
Output Power:	10HP 7.4KW	Guaranteed Efficiency:	90.2
RPM:	1760	3/4 Load Efficiency:	--
Voltage:	230/460	KVA Code:	J
Hertz:	60	Max KVAR:	3.5
Amps - FL:	24.8/12.4	Power Factor:	82
Service Factor:	1.15	Bearing - DE:	6308ZZ
Alt Service Factor:	--	Bearing - ODE:	6208ZZ

Enclosure is Dripproof

Stamped Nameplate Notes:**Additional Information:**

4 POLE DP
 LRA: 195/97.5
 NO. OF MOTOR LEADS: 12
 CONDUIT BOX VOLUME (IN³): 50.3
 CONDUIT BOX MTL: STAMPED STEEL
 GREASE TYPE: SHELL ALVANIA R3 LITHIUM GREASE
 USABLE AT 200V @ 10HP, 27.5 AMPS @ 1.0 SF
 50 HZ DATA: 10HP, 200/400V, 28.6/14.3 AMPS @ 1.0SF, 1455 RPM
 SOUND POWER: 69.8
 DMK, 06/04, DATA UPDATE 11/2004
 INVERTER DUTY PER NEMA MG1 PART 31
 FOR VARIABLE TORQUE LOADS
 ADD EXT MNT AEGIS SGR 235A4970AG14
 MADE FROM 5KS215ATE205A
 NEW CAT# E7062
 KS-ODP MOD BMEYER 02/23/2012

Performance Characteristics

1st Winding 1st Connection

Design: 21AD1007A

Marks:

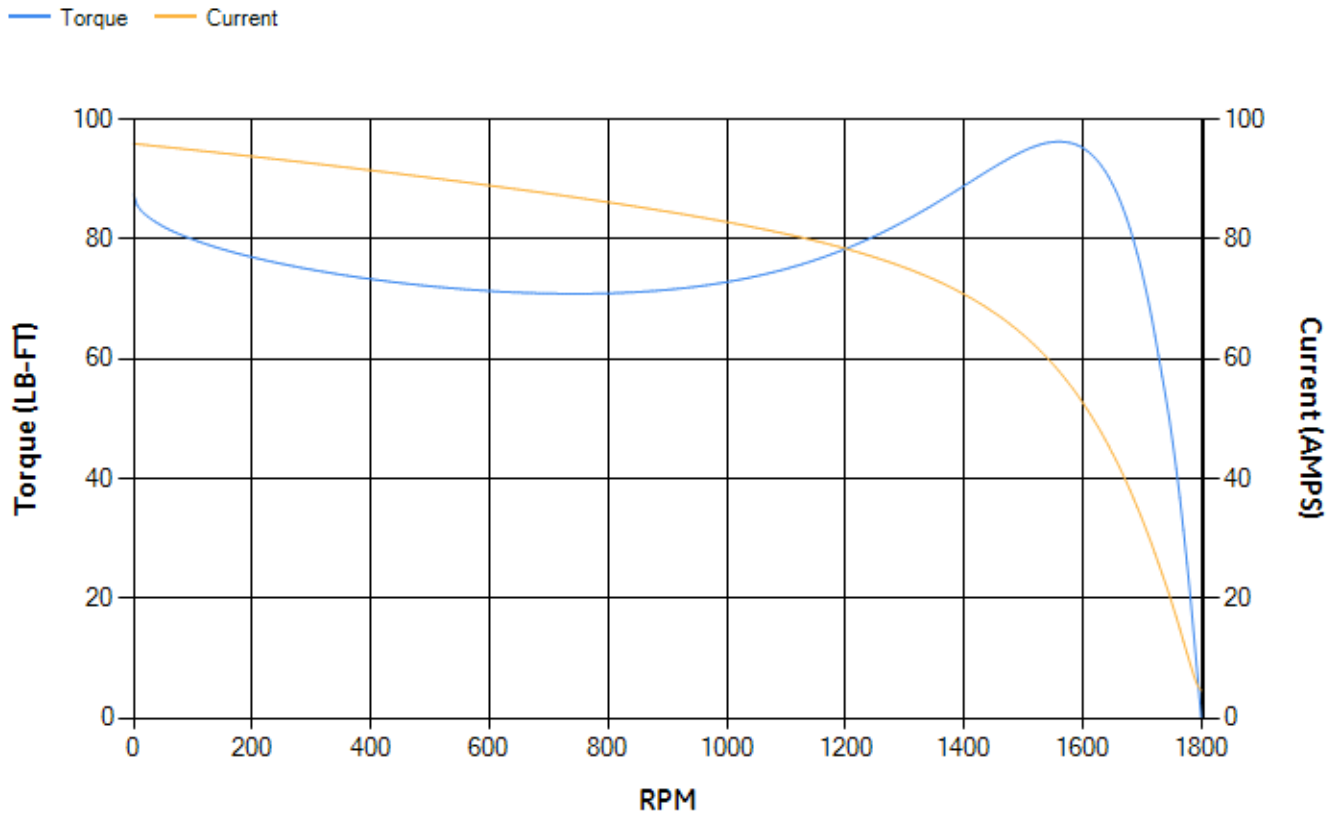
LOAD %	125.0	115.0	100.0	75.0	50.0	25.0	0.0
% EFF	90.78	91.26	92.07	92.49	92.2	88.85	0.00
% PF	84.6	84.19	83.04	78.98	69.65	48.11	5.41
AMPS	15.23	14.01	12.24	9.61	7.29	5.47	4.57

TORQ(FL)#FT	29.75	TORQ(LR)%FL	293.98	TORQ(BD)%FL	320.63
AMPS(LR)	95.93	PF AT START	0.44		

This motor is capable of two cold or one hot start with a maximum connected load inertia of 321 Lb-Ft Sq (13.51 Kg-meter Sq)at 100% voltage, where the load torque varies with the square of the speed. Acceleration time with maximum inertia and the above load type is 28 seconds. Safe stall time at 100% voltage is 69 seconds cold, 44 seconds hot. Rotor inertia is 1.01 Lb-Ft Sq (0.04 Kg-meter Sq).

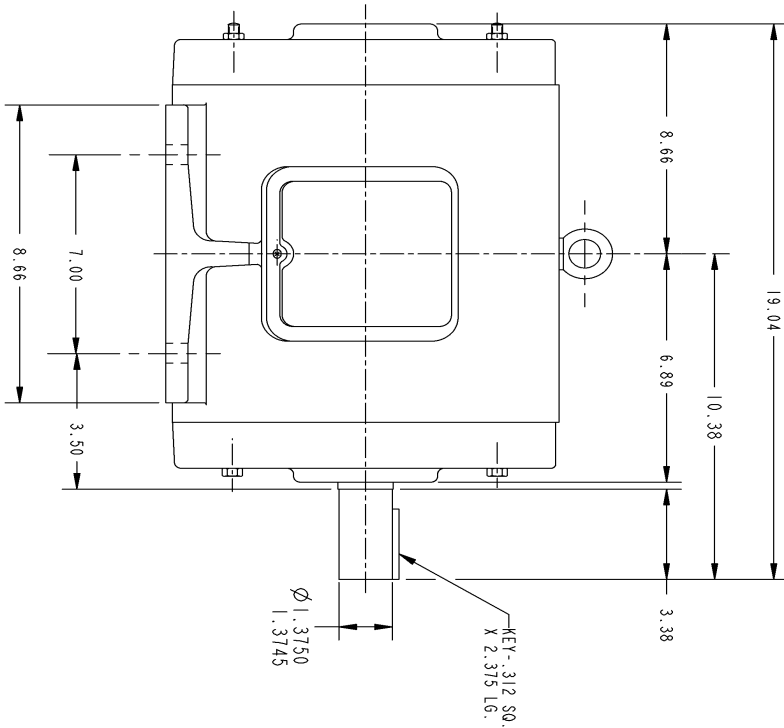
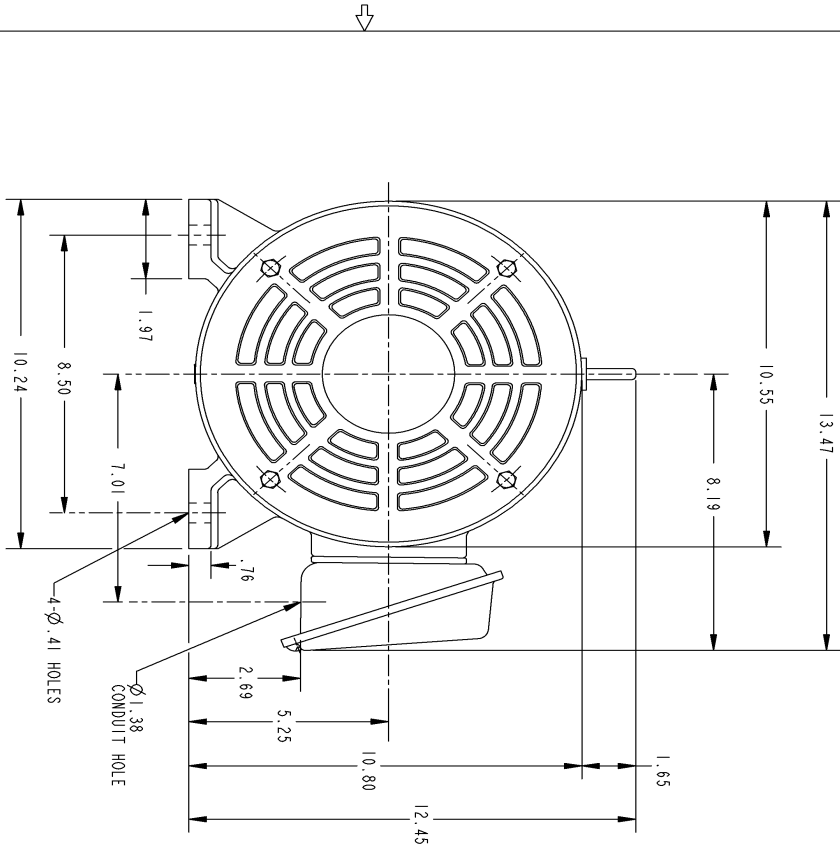
Open Circuit A-C:	0.355	Short Circuit D-C:	0.011
Short Circuit A-C:	0.015	X/R Ratio:	4.145
Stator Slots:	48	Rotor Slots:	40

Speed Torque Current Curve (First Connection, First Speed)



NAME:501452442 OBJECT:358B6215AB DATE:23-May-07 23:46:58

Marks:

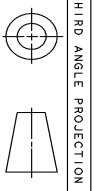


SIZE DRAWING FOR
358B6215AB
 GE PROPRIETARY INFORMATION

REV.	DESCRIPTION	DATE	APPROVED
1	ISAAC 07-0770	05/02/07	R. KOHNE

NOTES :

1. CONDUIT BOX MAY BE PLACED WITH THE ENTRANCE DOWN, UP OR ON EITHER SIDE.
2. F-1 ASM AS SHOWN.
3. F-2 ASM - HAS CONDUIT BOX ON OPPOSITE SIDE.



THIRD ANGLE PROJECTION

UNLESS OTHERWISE SPECIFIED:		SIGNATURES		DATE	
DIMENSIONS ARE IN INCHES		DRAWN	P. RAJU	03/28/03	
TOLERANCE ON: 2 PL DECIMALS ± 3 PL DECIMALS ± ANGLES ± 1°		CHECKED	PRABHAKAR	03/27/03	
MATERIAL:		ISSUED	PRABHAKAR	03/27/03	
APPLIED PRACTICES		GE Industrial Systems GENERAL ELECTRIC COMPANY Fort Wayne, Indiana			
SCALE: DRAWING SCALE		SIZE DRAWING 358B6215AB		OUTLINE 215T - OPEN DRIP PROOF	
SHEET 1 OF 1		REV. 1		DISTRIBUTION:	

Marks:

Connection Diagram
GEM2034E-FIG10

