

# Product Information Packet

November 9, 2016

Data shown is for the current revision model #. Ensure your nameplate model # matches.

<b>Model Number:</b>	<b>5KS256STE305A</b>
<b>Catalog Number:</b>	<b>M7546</b>
<b>Instruction Manual:</b>	GEI-M1031
<b>Connection Diagram:</b>	GEM2034E-FIG210
<b>Outline Drawing:</b>	358B6272AB

<b>Accessory Connection Diagrams</b>			
<b>Bearing Thermocouple:</b>	None	<b>Heater:</b>	None
<b>RTD:</b>	None	<b>Thermistor:</b>	None
<b>Thermostat:</b>	None	<b>Winding Thermocouple:</b>	None
<b>Bearing RTD:</b>	None		

<b>Table of Contents</b>	
Specification	01
Performance Characteristics	02
Outline Drawing	03
Connection Drawing(s)	04



**Marks:**

<b>MODEL NUMBER:</b>	<b>5KS256STE305A</b>	<b>Estimated Weight:</b>	265 Lbs
<b>Outline Drawing:</b>	358B6272AB	<b>Time Rating:</b>	CONT
<b>Connection Diagram:</b>	GEM2034E-FIG210	<b>Enclosure:</b>	TEFC
<b>Instruction Book:</b>	GEI-M1031	<b>Encl Construction:</b>	SD
<b>Design Code:</b>	25AD3003A	<b>Ambient Max(°C):</b>	40
<b>Type:</b>	KS	<b>Alt Ambient Max(°C):</b>	--
<b>Frame:</b>	256T	<b>Insulation Class:</b>	F
<b>Phases:</b>	3	<b>NEMA Design:</b>	B
<b>Poles:</b>	6	<b>Nominal Efficiency:</b>	91 %
<b>Output Power:</b>	10HP 7.4KW	<b>Guaranteed Efficiency:</b>	89.5
<b>RPM:</b>	1170	<b>3/4 Load Efficiency:</b>	92.5
<b>Voltage:</b>	230/460	<b>KVA Code:</b>	G
<b>Hertz:</b>	60	<b>Max KVAR:</b>	3.3
<b>Amps - FL:</b>	25.6/12.8	<b>Power Factor:</b>	80
<b>Service Factor:</b>	1.15	<b>Bearing - DE:</b>	6310ZZ
<b>Alt Service Factor:</b>	--	<b>Bearing - ODE:</b>	6208ZZ

**Enclosure is Totally Enclosed Fan-Cooled**

**Stamped Nameplate Notes:**

6 POLE, TEFC,  
 IP54;IBM3; MASS 120KG; MIN AMB -15C; MAX ALT 1000M  
 USABLE AT 200V @ 10 HP, 28.3 AMPS @ 1.0 SF  
 50HZ DATA @ 1.15 SF: 7.5/5.6 HP,  
 200/400V, 25.6/12.8 AMPS: 50HZ DATA @ 1.00 SF  
 10.0/7.5 HP, 200/400V, 28.8/14.4AMPS  
 GREASE TYPE: SHELL ALVANIA R3 LITHIUM GREASE

**Additional Information:**

6 POLE, TEFC,  
 DUAL DIMENSION OUTLINE, IP54  
 NO. OF MOTOR LEADS: 12  
 CONDUIT BOX VOLUME (CU IN): 100.5  
 CONDUIT BOX MATERIAL: CAST IRON  
 SUITABLE FOR USE IN CLASS I DIVISION 2 LOCATIONS  
 CLASS I DIVISION 2 GROUPS A,B,C,D T3C  
 CLASS I ZONE 2 IIC T3C

**Performance Characteristics**

1st Winding 1st Connection

**Design: 25AD3003A**

**Marks:**

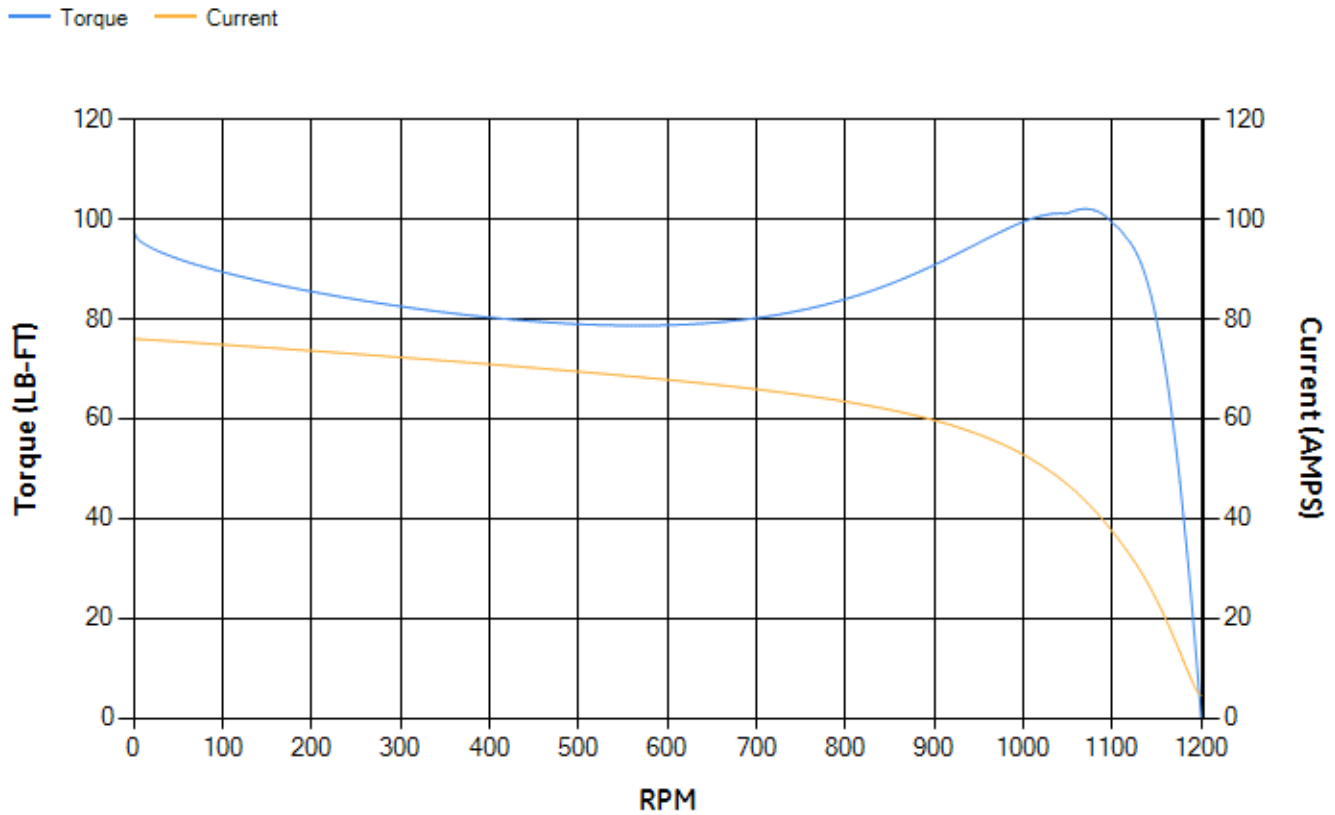
LOAD %	125.0	115.0	100.0	75.0	50.0	25.0	0.0
% EFF	90.44	91	91.9	92.47	92.35	89.33	0.00
% PF	83.43	83.08	82.03	78.12	69.03	47.86	5.11
AMPS	15.51	14.24	12.42	9.72	7.34	5.47	4.5

<b>TORQ(FL)#FT</b>	44.81	<b>TORQ(LR)%FL</b>	217.6	<b>TORQ(BD)%FL</b>	224.29
<b>AMPS(LR)</b>	76.01	<b>PF AT START</b>	0.39		

This motor is capable of two cold or one hot start with a maximum connected load inertia of 1329 Lb-Ft Sq (55.95 Kg-meter Sq)at 100% voltage, where the load torque varies with the square of the speed. Acceleration time with maximum inertia and the above load type is 72 seconds. Safe stall time at 100% voltage is 164 seconds cold, 114 seconds hot. Rotor inertia is 3.03 Lb-Ft Sq (0.13 Kg-meter Sq).

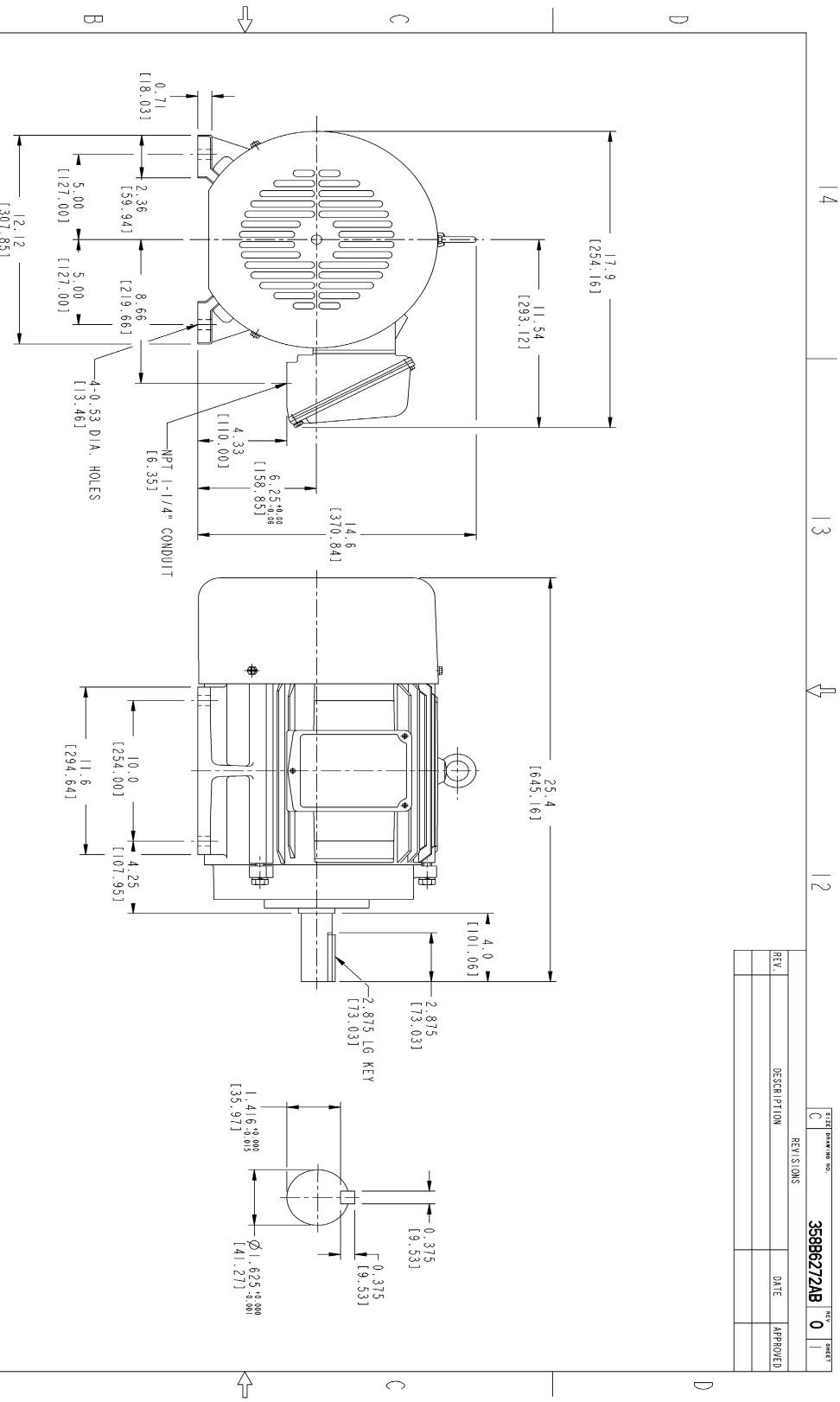
<b>Open Circuit A-C:</b>	0.309	<b>Short Circuit D-C:</b>	0.014
<b>Short Circuit A-C:</b>	0.016	<b>X/R Ratio:</b>	5.283
<b>Stator Slots:</b>	72	<b>Rotor Slots:</b>	60

**Speed Torque Current Curve (First Connection, First Speed)**

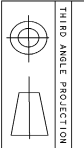


NAME:501291659 OBJECT:358B6272AB DATE:05-Dec-07 10:17:42

Marks:



- NOTES :
1. DIMENSIONS ARE IN INCHES.
  2. F-1 ASM AS SHOWN.
  3. F-2 ASM - HAS CONDUIT BOX ON OPPOSITE SIDE.
  4. BRACKETED DIMENSIONS ARE METRIC (MILLIMETERS)
  5. ICA11, IP54, IMB34 APPLY



THIRD ANGLE PROJECTION

Part must conform to SI 900000 Sect 4, Toxicity Procedure

REV.	DESCRIPTION	DATE	APPROVED

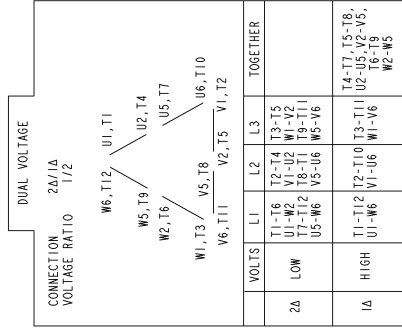
358B6272AB REV 0

FOR ADDITIONAL INFO REFER TO:	SIGNATURES	DATE
APPROVED		
DESIGNED		
DRAWN		
CHECKED		
IN CHARGE		
DATE		

		<b>GENERAL ELECTRIC COMPANY</b>	
<b>OUTLINE</b>			
<b>FID - 256T TERC CE MARK</b>			
<b>1005 CU IN CONDUIT BOX</b>			
ISSUED			
SCALE:	C		
SHEET	1	OF	1

Marks:

**Connection Diagram**  
**GEM2034E-FIG210**



NAME:501452353 OBJECT:GEM2034E-FIG210 DATE:25-Feb-08 14:03:35

