

# Product Information Packet

November 7, 2016

Data shown is for the current revision model #. Ensure your nameplate model # matches.

<b>Model Number:</b>	<b>5KS182ATE205A</b>
<b>Catalog Number:</b>	<b>E720</b>
<b>Instruction Manual:</b>	GEI-M1023
<b>Connection Diagram:</b>	GEM2034E-FIG3
<b>Outline Drawing:</b>	358B6214AA

## Accessory Connection Diagrams

<b>Bearing Thermocouple:</b>	None	<b>Heater:</b>	None
<b>RTD:</b>	None	<b>Thermistor:</b>	None
<b>Thermostat:</b>	None	<b>Winding Thermocouple:</b>	None
<b>Bearing RTD:</b>	None		

## Table of Contents

Specification	01
Performance Characteristics	02
Outline Drawing	03
Connection Drawing(s)	04



**Marks:**

<b>MODEL NUMBER:</b>	<b>5KS182ATE205A</b>	<b>Estimated Weight:</b>	72 Lbs
<b>Outline Drawing:</b>	358B6214AA	<b>Time Rating:</b>	CONT
<b>Connection Diagram:</b>	GEM2034E-FIG3	<b>Enclosure:</b>	DP
<b>Instruction Book:</b>	GEI-M1023	<b>Encl Construction:</b>	OPEN
<b>Design Code:</b>	18AD1006A	<b>Ambient Max(°C):</b>	40
<b>Type:</b>	KS	<b>Alt Ambient Max(°C):</b>	--
<b>Frame:</b>	182T	<b>Insulation Class:</b>	F
<b>Phases:</b>	3	<b>NEMA Design:</b>	A
<b>Poles:</b>	4	<b>Nominal Efficiency:</b>	89.5 %
<b>Output Power:</b>	3HP 2.2KW	<b>Guaranteed Efficiency:</b>	87.5
<b>RPM:</b>	1755	<b>3/4 Load Efficiency:</b>	90.6
<b>Voltage:</b>	230/460	<b>KVA Code:</b>	L
<b>Hertz:</b>	60	<b>Max KVAR:</b>	1.2
<b>Amps - FL:</b>	7.8/3.9	<b>Power Factor:</b>	79.5
<b>Service Factor:</b>	1.15	<b>Bearing - DE:</b>	6207ZZ
<b>Alt Service Factor:</b>	--	<b>Bearing - ODE:</b>	6207ZZ

Enclosure is Dripproof

---

**Stamped Nameplate Notes:****Additional Information:**

NOT SUITABLE FOR F2 CONVERSION  
 UNLESS 3/32" (0.090") CLEARANCE FROM ENDSHIELD  
 TO WINDINGS IS VERIFIED.  
 4 POLE DP  
 LRA: 69.8/34.9  
 NO. OF MOTOR LEADS: 9  
 CONDUIT BOX VOLUME (IN<sup>3</sup>): 30.2  
 CONDUIT BOX MTL: STAMPED STEEL  
 GREASE TYPE: SHELL ALVANIA R3 LITHIUM GREASE  
 USABLE AT 200V @ 3 HP, 8.7 AMPS @ 1.0 SF  
 50 HZ DATA: 3 HP, 200/400V, 8.8/4.4 AMPS @ 1.0 SF, 1445 RPM  
 SOUND POWER: 66.5  
 DMK, 06/04, DATA UPDATE 11/2004  
 INVERTER DUTY PER NEMA MG1 PART 31  
 FOR VARIABLE TORQUE LOADS

**Performance Characteristics**

1st Winding 1st Connection

**Design: 18AD1006A**

**Marks:**

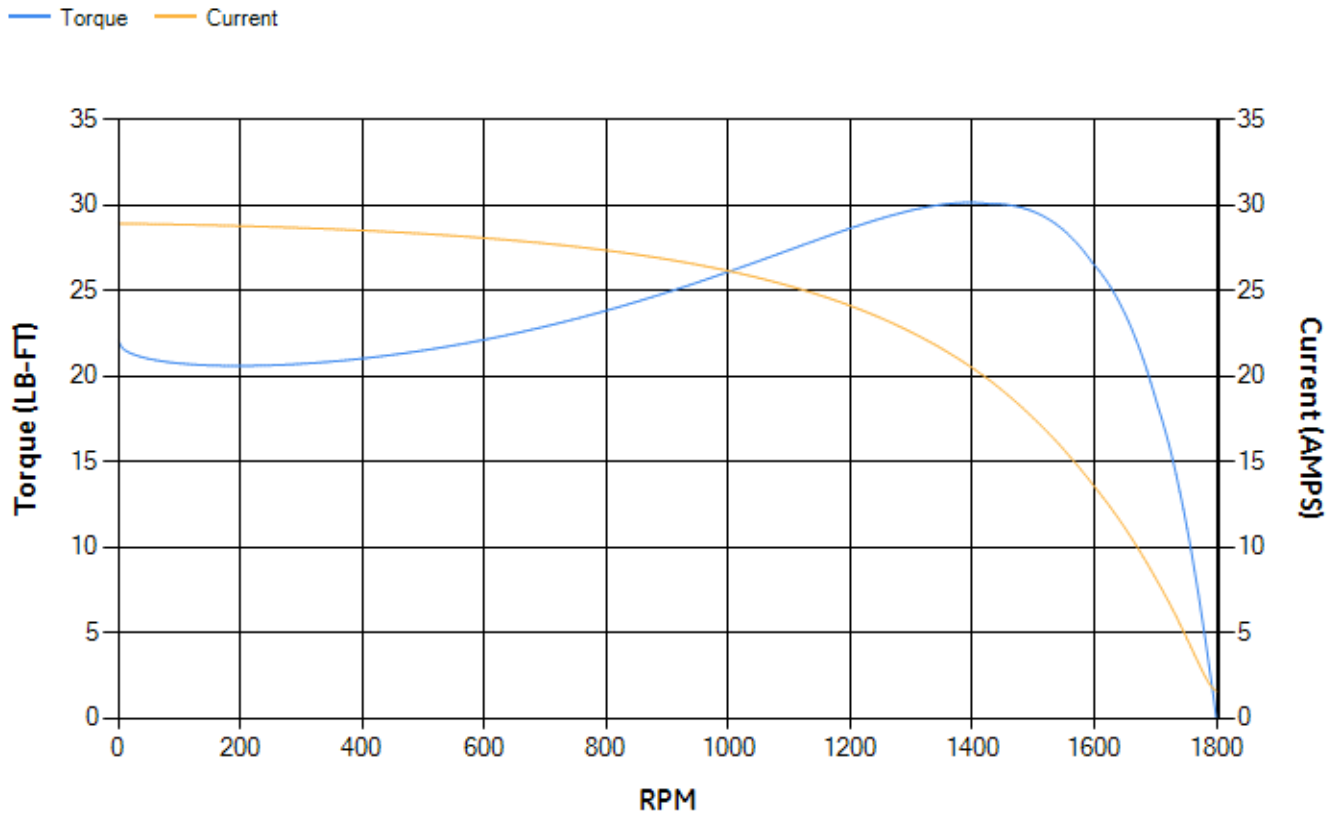
LOAD %	125.0	115.0	100.0	75.0	50.0	25.0	0.0
% EFF	88.93	89.44	90.27	90.6	89.95	85.37	0.00
% PF	83.62	82.93	81.32	76.36	66.04	44.68	6.57
AMPS	4.72	4.35	3.82	3.04	2.36	1.84	1.57

<b>TORQ(FL)#FT</b>	8.97	<b>TORQ(LR)%FL</b>	245.75	<b>TORQ(BD)%FL</b>	331.02
<b>AMPS(LR)</b>	28.91	<b>PF AT START</b>	0.44		

This motor is capable of two cold or one hot start with a maximum connected load inertia of 124 Lb-Ft Sq (5.22 Kg-meter Sq)at 100% voltage, where the load torque varies with the square of the speed. Acceleration time with maximum inertia and the above load type is 34 seconds. Safe stall time at 100% voltage is 81 seconds cold, 59 seconds hot. Rotor inertia is 0.39 Lb-Ft Sq (0.02 Kg-meter Sq).

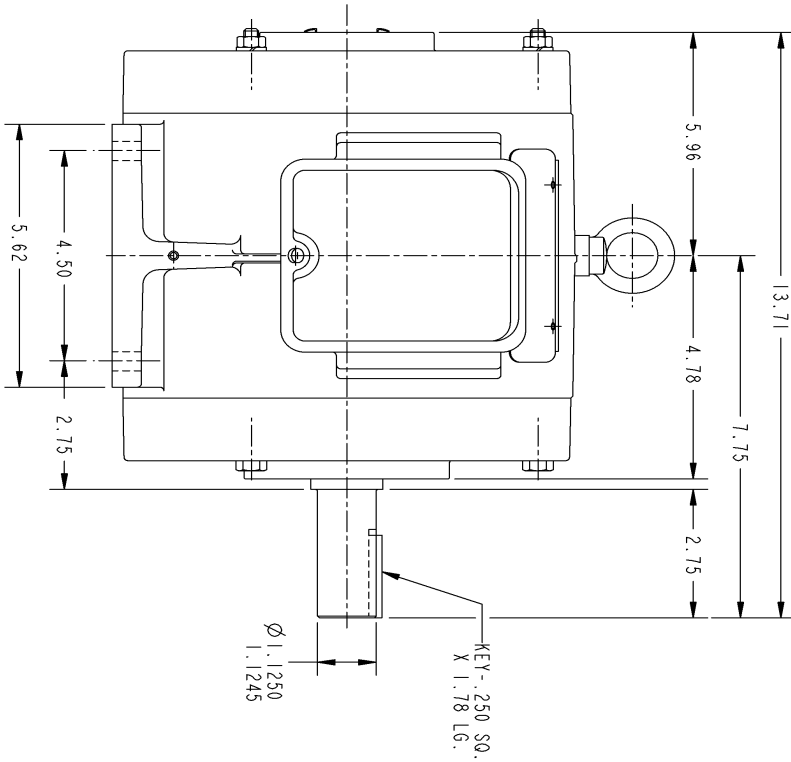
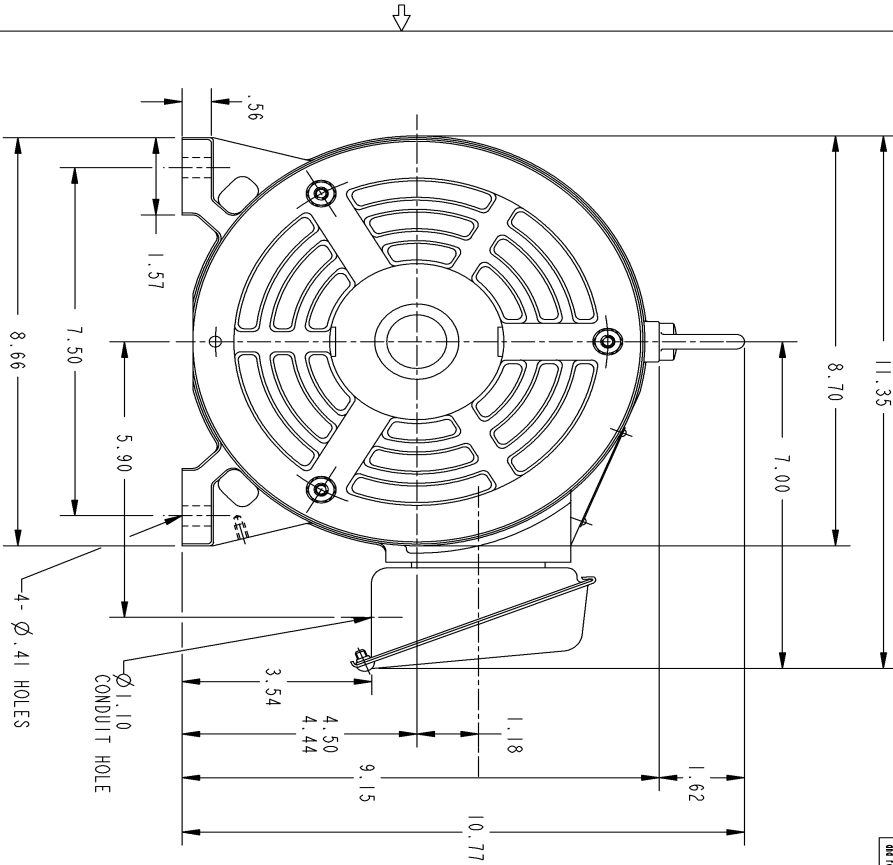
<b>Open Circuit A-C:</b>	0.254	<b>Short Circuit D-C:</b>	0.009
<b>Short Circuit A-C:</b>	0.012	<b>X/R Ratio:</b>	3.261
<b>Stator Slots:</b>	36	<b>Rotor Slots:</b>	28

**Speed Torque Current Curve (First Connection, First Speed)**



NAME:501452442 OBJECT:358B6214AA DATE:24-May-07 22:58:52

Marks:



This General is the property of General Electric Company (GE) and contains confidential information. This General is loaned to the recipient under the condition that the recipient will not disclose the information contained herein to any third party without the prior written consent of GE. This General shall be returned to GE upon its receipt and shall not be used for reproduction or other purposes without the prior written consent of GE.

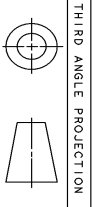
SIZE: DRAWING FOR  
**358B6214AA**  
 GE PROPRIETARY INNOVATION

REV.	DESCRIPTION	DATE	APPROVED
1	ISAAC 07-0770	05/02/07	R. KOHNE

REVISIONS

NOTES :

1. CONDUIT BOX MAY BE PLACED WITH THE ENTRANCE DOWN, UP OR ON EITHER SIDE.
2. F-1 ASM AS SHOWN.
3. F-2 ASM - HAS CONDUIT BOX ON OPPOSITE SIDE.



THIRD ANGLE PROJECTION

UNLESS OTHERWISE SPECIFIED:		SIGNATURES		DATE	
DIMENSIONS ARE IN INCHES		DRAWN		P. RAJU 03/28/03	
TOLERANCE ON:		CHECKED		PRABHAKAR 03/27/03	
2 PL DECIMALS ± .		ENGR		PRABHAKAR 03/27/03	
3 PL DECIMALS ± .		ISSUED		PRABHAKAR 03/27/03	
ANGLES ± 1°		APPLIED PRACTICES		SCALE: DRAWING SCALE	
MATERIAL:		SIZE/DRAWING		REV.	
		<b>358B6214AA</b>		<b>1</b>	
		GENERAL ELECTRIC COMPANY		Fort Wayne, Indiana	
		Systems		182T - OPEN DRIP PROOF	
		OUTLINE		DISTRIBUTION:	
		SHEET 1 OF 1			

Marks:

**Connection Diagram**  
**GEM2034E-FIG3**

