

# Product Information Packet

November 8, 2016

Data shown is for the current revision model #. Ensure your nameplate model # matches.

<b>Model Number:</b>	<b>5KS405LAA305B</b>
<b>Catalog Number:</b>	<b>M7165</b>
<b>Instruction Manual:</b>	GEI-56128
<b>Connection Diagram:</b>	GEM2034E-FIG3
<b>Outline Drawing:</b>	239CC400AA

Accessory Connection Diagrams			
<b>Bearing Thermocouple:</b>	None	<b>Heater:</b>	None
<b>RTD:</b>	None	<b>Thermistor:</b>	None
<b>Thermostat:</b>	None	<b>Winding Thermocouple:</b>	None
<b>Bearing RTD:</b>	None		

Table of Contents	
Specification	01
Performance Characteristics	02
Outline Drawing	03
Connection Drawing(s)	04

**Marks:**

<b>MODEL NUMBER:</b>	<b>5KS405LAA305B</b>	<b>Estimated Weight:</b>	1430 Lbs
<b>Outline Drawing:</b>	239CC400AA	<b>Time Rating:</b>	CONT
<b>Connection Diagram:</b>	GEM2034E-FIG3	<b>Enclosure:</b>	TEFC
<b>Instruction Book:</b>	GEI-56128	<b>Encl Construction:</b>	SD
<b>Design Code:</b>	40BD3055A	<b>Ambient Max(°C):</b>	40
<b>Type:</b>	KS	<b>Alt Ambient Max(°C):</b>	--
<b>Frame:</b>	405T	<b>Insulation Class:</b>	F
<b>Phases:</b>	3	<b>NEMA Design:</b>	A
<b>Poles:</b>	6	<b>Nominal Efficiency:</b>	94.5 %
<b>Output Power:</b>	75HP 55.5KW	<b>Guaranteed Efficiency:</b>	93.6
<b>RPM:</b>	1190	<b>3/4 Load Efficiency:</b>	94.6
<b>Voltage:</b>	230/460	<b>KVA Code:</b>	G
<b>Hertz:</b>	60	<b>Max KVAR:</b>	29.6
<b>Amps - FL:</b>	185.8/92.9	<b>Power Factor:</b>	80.0
<b>Service Factor:</b>	1.15	<b>Bearing - DE:</b>	6316ZC3S0
<b>Alt Service Factor:</b>	--	<b>Bearing - ODE:</b>	6316ZC3S0

**Enclosure is Totally Enclosed Fan-Cooled**

---

**Stamped Nameplate Notes:**

INVERTER DUTY PER NEMA MG1 PART 31  
 ALTERNATE RATING FOR PWM CONTROL:1.0SF 40C AMBIENT  
 VAR TORQUE RANGE 0-60 HZ

**Additional Information:**

6P - T EXTN  
 700 CU IN - 3.00" NPT  
 OIL RESISTANT SLEEVING ON LEADS  
 F1 MOUNTING  
 VIBRATION LIMIT 0.15 INCH PER SEC

**Performance Characteristics**

1st Winding 1st Connection

**Design: 40BD3055A**

**Marks:**

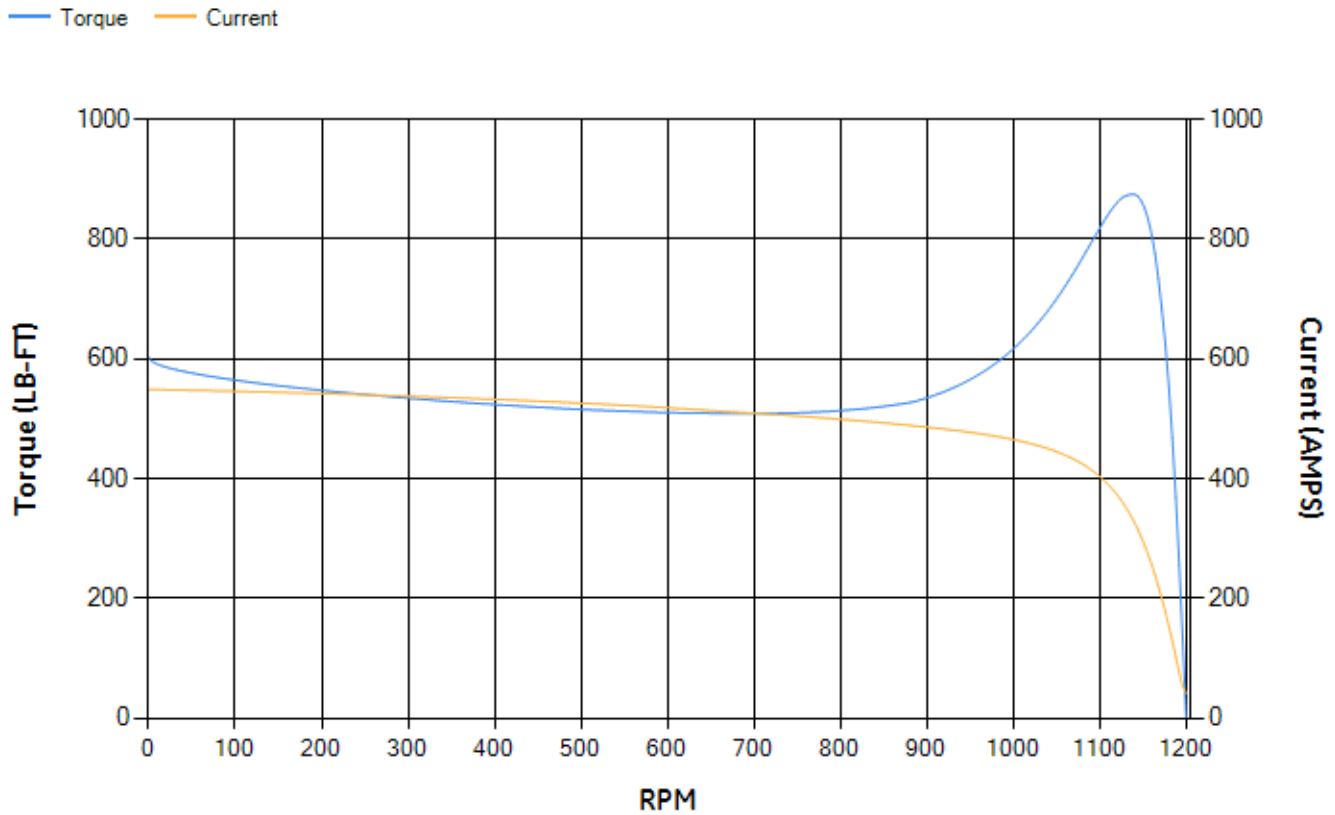
LOAD %	125.0	115.0	100.0	75.0	50.0	25.0	0.0
% EFF	93.82	94.08	94.59	94.62	94.17	91.28	0.00
% PF	82.49	81.76	80.06	74.74	63.67	41.19	3.29
AMPS	113.38	104.95	92.51	74.44	58.53	46.68	41.21

<b>TORQ(FL)#FT</b>	331.31	<b>TORQ(LR)%FL</b>	181.89	<b>TORQ(BD)%FL</b>	263.17
<b>AMPS(LR)</b>	548.94	<b>PF AT START</b>	0.35		

This motor is capable of two cold or one hot start with a maximum connected load inertia of 4906 Lb-Ft Sq (206.54 Kg-meter Sq)at 100% voltage, where the load torque varies with the square of the speed. Acceleration time with maximum inertia and the above load type is 42 seconds. Safe stall time at 100% voltage is 103 seconds cold, 56 seconds hot. Rotor inertia is 30.95 Lb-Ft Sq (1.3 Kg-meter Sq).

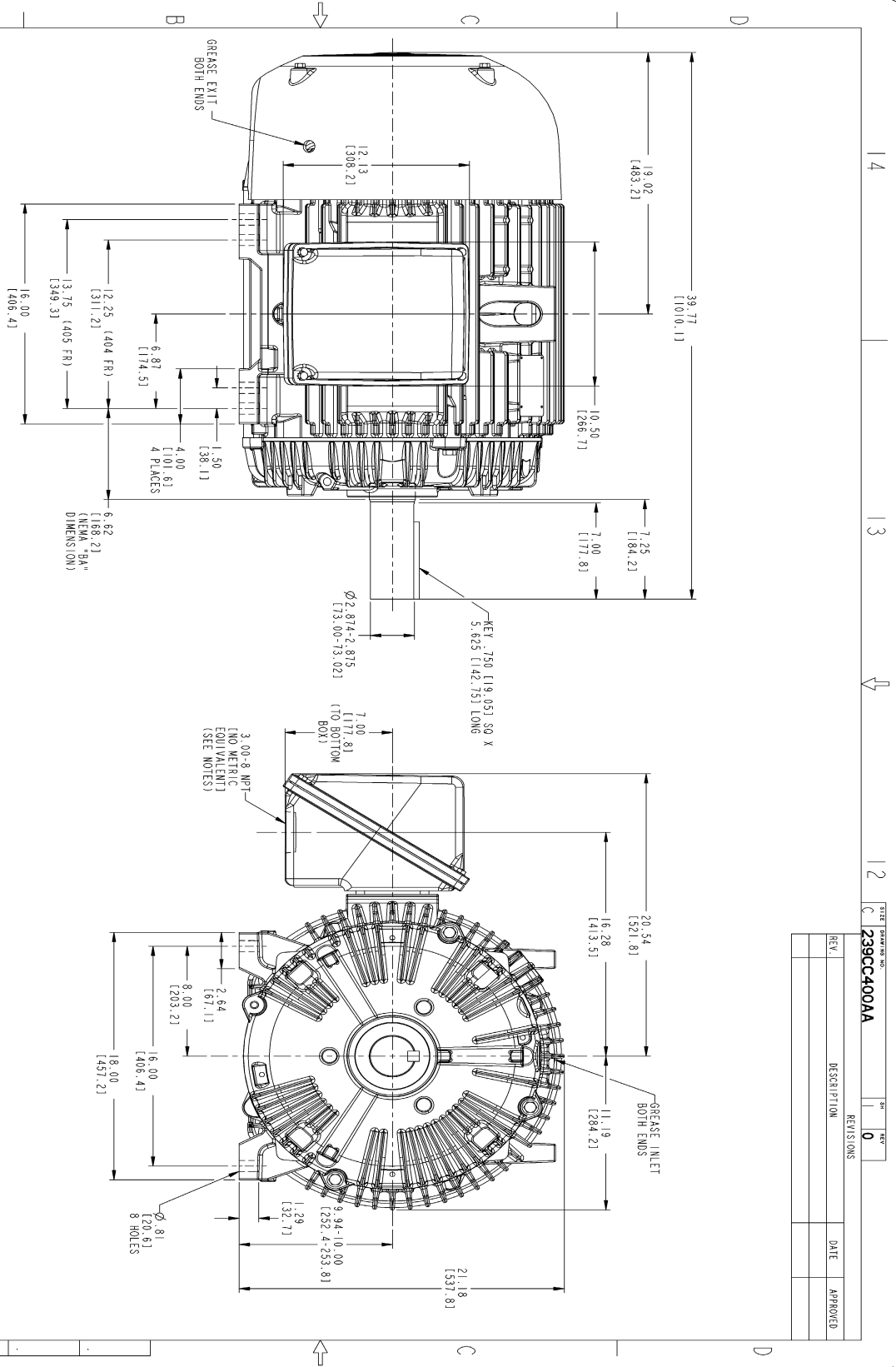
<b>Open Circuit A-C:</b>	0.58	<b>Short Circuit D-C:</b>	0.021
<b>Short Circuit A-C:</b>	0.038	<b>X/R Ratio:</b>	7.766
<b>Stator Slots:</b>	72	<b>Rotor Slots:</b>	58

**Speed Torque Current Curve (First Connection, First Speed)**



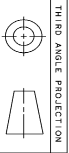
NAME:501352727 OBJECT:239CC400AA DATE:31-Jul-07 12:31:11

Marks:



NOTES:

1. CONDUIT BOX MAY BE PLACED WITH THE ENTRANCE DOWN, UP OR ON EITHER SIDE.
2. F-1 ASSEMBLY AS SHOWN.
3. F-2 ASSEMBLY CONDUIT BOX ON OPPOSITE SIDE.
4. BRACKETED DIMENSIONS ARE METRIC (MILLIMETERS).



REV.	DESCRIPTION	DATE	APPROVED

SIGNATURES	DATE	<p><b>GENERAL ELECTRIC COMPANY</b> Fort Wayne, Indiana</p>
DESIGNED BY: SAJAN 01/21/07	DATE: 01/21/07	
DRAWN BY: SAJAN 01/21/07	DATE: 01/21/07	<p><b>OUTLINE</b> 404/405 T TEFC ESP 700 CU. IN. CONDUIT BOX</p>
APPLIED PRACTICES	SHEET/DRAWING: 239CC400AA	
SCALE: 0.220	REF. NO.:	SHEET 1 OF 1

DISTRIBUTION: MMP

Marks:

**Connection Diagram**  
**GEM2034E-FIG3**

