

# Product Information Packet

November 8, 2016

Data shown is for the current revision model #. Ensure your nameplate model # matches.

<b>Model Number:</b>	<b>5KS444XAA114D1</b>
<b>Catalog Number:</b>	<b>M8919</b>
<b>Instruction Manual:</b>	GEI-56128
<b>Connection Diagram:</b>	GEM2034E-FIG7
<b>Outline Drawing:</b>	239C6600YH

Accessory Connection Diagrams			
<b>Bearing Thermocouple:</b>	None	<b>Heater:</b>	None
<b>RTD:</b>	None	<b>Thermistor:</b>	None
<b>Thermostat:</b>	None	<b>Winding Thermocouple:</b>	None
<b>Bearing RTD:</b>	None		

## Table of Contents

Specification	01
Performance Characteristics	02
Outline Drawing	03
Connection Drawing(s)	04
Spare parts	05



**Marks:**

<b>MODEL NUMBER:</b>	<b>5KS444XAA114D1</b>	<b>Estimated Weight:</b>	1830 Lbs
<b>Outline Drawing:</b>	239C6600YH	<b>Time Rating:</b>	CONT
<b>Connection Diagram:</b>	GEM2034E-FIG7	<b>Enclosure:</b>	TEFC
<b>Instruction Book:</b>	GEI-56128	<b>Encl Construction:</b>	841
<b>Design Code:</b>	44BD0130B	<b>Ambient Max(°C):</b>	40
<b>Type:</b>	KS	<b>Alt Ambient Max(°C):</b>	--
<b>Frame:</b>	444TS	<b>Insulation Class:</b>	H
<b>Phases:</b>	3	<b>NEMA Design:</b>	B
<b>Poles:</b>	2	<b>Nominal Efficiency:</b>	95.0 %
<b>Output Power:</b>	125HP 92.5KW	<b>Guaranteed Efficiency:</b>	94.5
<b>RPM:</b>	3580	<b>3/4 Load Efficiency:</b>	94.7
<b>Voltage:</b>	575	<b>KVA Code:</b>	G
<b>Hertz:</b>	60	<b>Max KVAR:</b>	29.4
<b>Amps - FL:</b>	111.0	<b>Power Factor:</b>	88.5
<b>Service Factor:</b>	1.15	<b>Bearing - DE:</b>	6314ZC3
<b>Alt Service Factor:</b>	--	<b>Bearing - ODE:</b>	6314ZC3

**Enclosure is Totally Enclosed Fan-Cooled**

**Stamped Nameplate Notes:**

EXCEPTION TO EEE-STD-841-2009:  
 SOUND POWER LEVEL 93DBA  
 DE BRG 70BC03JP30, ODE BRG 70BC03JP30  
 STAMP NP249A5564P051 AS BELOW:  
 MODEL:5KS444XAA114D1 S/N: XXX  
 CSA CERTIFIED CSA09.2216219 FOR EX NA IIC 200 C GC  
 CL 1 ZONE2 AEX NA IIC 200C;CL 1 DIV2 GRP ABCD 200C  
 IN -25C <= AMB <= 40C, 1.0 SF ON SINE-WAVE PWR  
 SURF TEMP 215C AT 1.15SF ON SINE-WAVE PWR  
 OR 200 C VT OR 200 C CT OR --- C CHP PWM CONTROL  
 ALTERNATE RATING FOR PWM CONTROL 1.0SF 40C AMB  
 VT 0-60 HZ, CT 3-60 HZ, CHP --- HZ.

**Additional Information:**

2P - TS EXTN  
 PAINTED FRAME ID & SHAFT,  
 FAN COVER INSIDE & ODE E/S OUTSIDE  
 700 CU IN - 3.00" NPT  
 INPRO SEAL BOTH ENDS  
 OIL RESISTANT SLEEVING ON LEADS  
 .0015" TIR SHAFT RUNOUT  
 ROUTINE TEST REPORT AND 5 POINT VIBRATION TEST  
 REPORT INCLUDED IN C/B  
 COPPER WASHER UNDER HEADS OF BEARING CAP BOLTS,  
 APPLY TITE-SEAL (A50CD427A) ON BEARING CAP SCREWS,  
 RABBETS AND PLUG THREADS.  
 GROUND PAD



F1 MOUNTING

**Performance Characteristics**

1st Winding 1st Connection

**Design: 44BD0130B**

**Marks:**

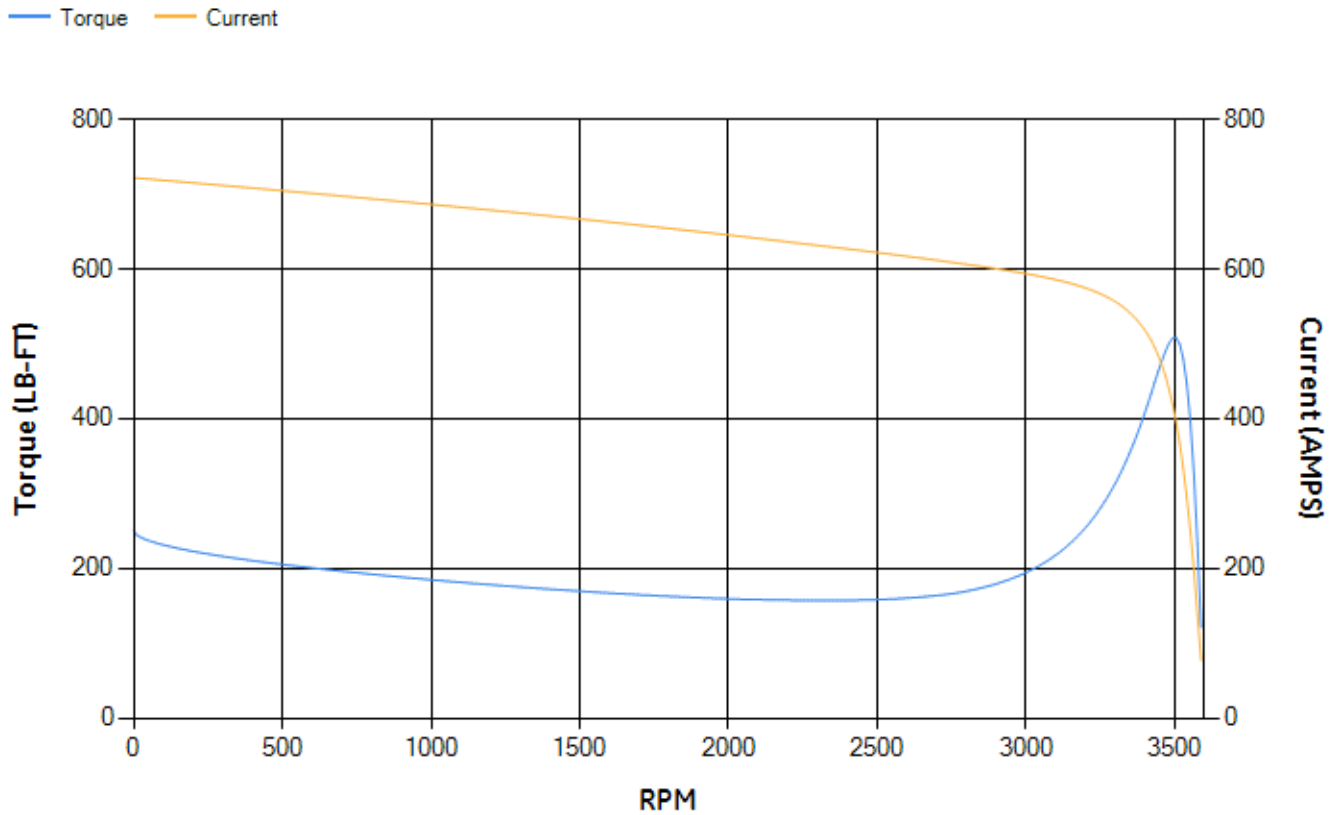
LOAD %	125.0	115.0	100.0	75.0	50.0	25.0	0.0
% EFF	94.71	94.82	95.1	94.73	93.76	89.92	0.00
% PF	89.27	89.15	88.63	86.24	79.68	60.35	7.28
AMPS	138.37	127.33	111.05	85.92	62.63	43.12	32.85

<b>TORQ(FL)#FT</b>	183.33	<b>TORQ(LR)%FL</b>	136.71	<b>TORQ(BD)%FL</b>	277.31
<b>AMPS(LR)</b>	721.97	<b>PF AT START</b>	0.2		

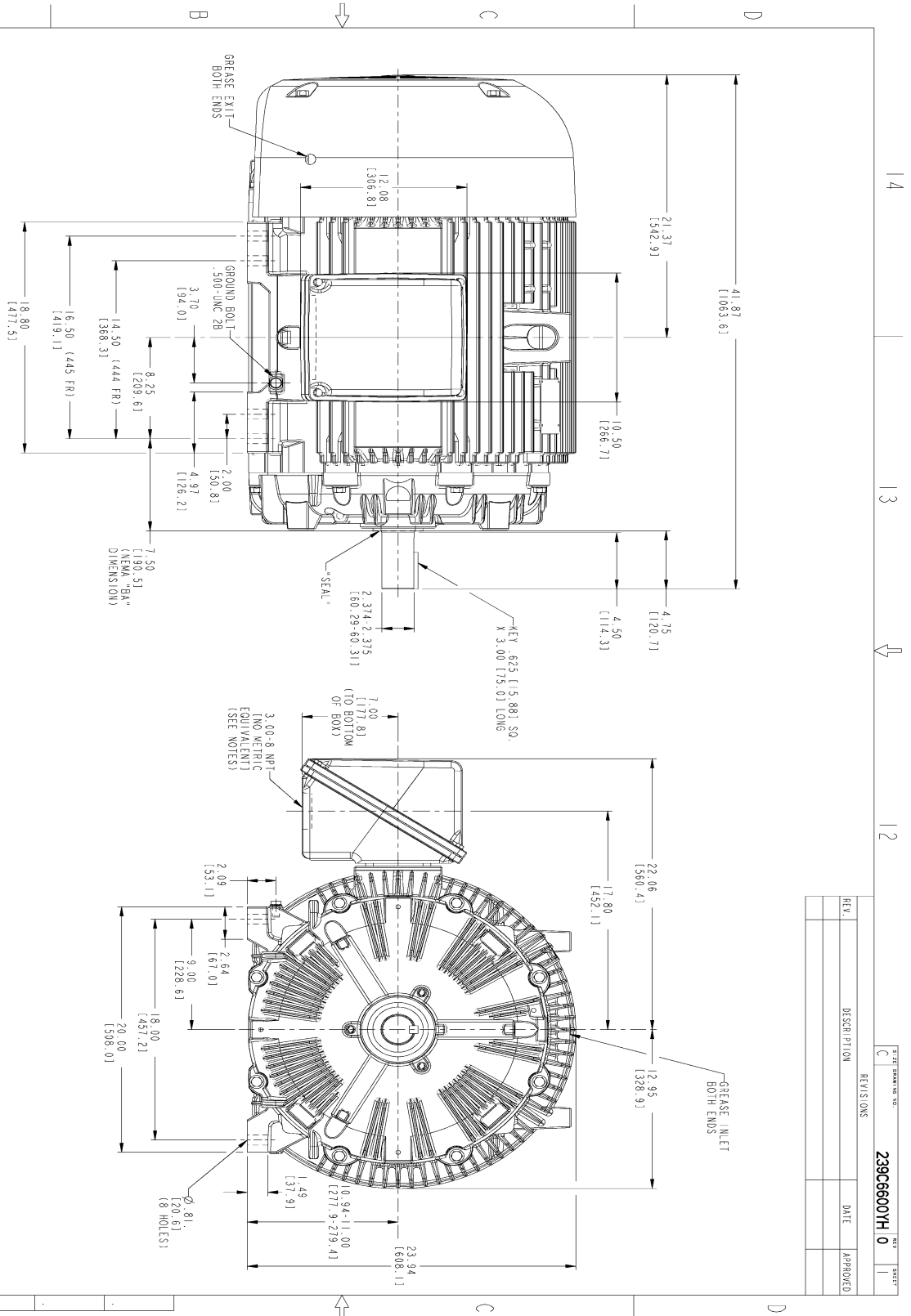
This motor is capable of two cold or one hot start with a maximum connected load inertia of 422 Lb-Ft Sq (17.77 Kg-meter Sq) at 100% voltage, where the load torque varies with the square of the speed. Acceleration time with maximum inertia and the above load type is 37 seconds. Safe stall time at 100% voltage is 79 seconds cold, 44 seconds hot. Rotor inertia is 22.71 Lb-Ft Sq (0.96 Kg-meter Sq).

<b>Open Circuit A-C:</b>	1.558	<b>Short Circuit D-C:</b>	0.037
<b>Short Circuit A-C:</b>	0.075	<b>X/R Ratio:</b>	13.786
<b>Stator Slots:</b>	48	<b>Rotor Slots:</b>	38

**Speed Torque Current Curve (First Connection, First Speed)**

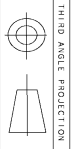


Marks:



NOTES:

- 1. CONDUIT BOX MAY BE PLACED WITH THE ENTRANCE DOWN, UP OR ON EITHER SIDE.
- 2. F-1 ASSEMBLY AS SHOWN.
- 3. F-2 ASSEMBLY-CONDUIT BOX ON OPPOSITE SIDE.
- 4. BRACKETED DIMENSIONS ARE METRIC (MILLIMETERS).
- 5. TOLERANCE ON PERMISSIBLE SHAFT EXTENSION RUNOUT IS .0015 T.I.R.



REV.	DESCRIPTION	DATE	APPROVED

239C6600YH 0

SIGNATURES	DATE
DESIGNER	06/29/15
CHECKED	06/29/15
DRG	06/29/15
WKS	06/29/15
ISSUED	06/29/15

GENERAL ELECTRIC COMPANY  
**OUTLINE**  
 444/445 TS TFFC XSD 841  
 700 CU IN CONDUIT BOX, 0015 SHAFT RUNOUT  
 239C6600YH 0

SCALE: 0.200	REF. NO.: 239C66000H	SHEET 1 OF 1
--------------	----------------------	--------------

Marks:

**Connection Diagram**  
**GEM2034E-FIG7**



End shield Assembly		
Part Description	DE Side Part#	ODE Side Part#
End Shield	115E4354AA1	115E4354LL1
Bearing	235A2616AA01	235A2616AA01
Slinger/Inproseal	235A4575GS3	235A4575GS3

Fan & Fan Cover Assembly	
Part Description	Part#
Fan	159C7100AA1
Fan Cover	128D6841AA1

Conduit & Accessories Box Assembly	
Part Description	Part#
Conduit Box	118D4408AD2

Mechanical Accessories	
Part Description	Part#
Brake	
Tachometer	