

# Product Information Packet

November 7, 2016

Data shown is for the current revision model #. Ensure your nameplate model # matches.

<b>Model Number:</b>	<b>5CD142GE011B039</b>
<b>Catalog Number:</b>	<b>D536</b>
<b>Instruction Manual:</b>	GEH-3967N
<b>Connection Diagram:</b>	36A167960CA501
<b>Outline Drawing:</b>	36B467421PA001

Accessory Connection Diagrams			
<b>Bearing Thermocouple:</b>	None	<b>Heater:</b>	None
<b>RTD:</b>	None	<b>Thermistor:</b>	None
<b>Thermostat:</b>	None	<b>Winding Thermocouple:</b>	None
<b>Bearing RTD:</b>	None		

Table of Contents	
Specification	01
Outline Drawing	02
Connection Drawing(s)	03

**Marks:**

<b>MODEL NUMBER:</b>	<b>5CD142GE011B039</b>
<b>Outline Drawing:</b>	36B467421PA001
<b>Connection Diagram:</b>	36A167960CA501
<b>Horsepower:</b>	1.5
<b>Armature Volts:</b>	180
<b>Wound:</b>	SHUNT
<b>Enclosure:</b>	DPFG
<b>Duty:</b>	CONT
<b>Rating Code:</b>	142G1330-03
<b>K(V):</b>	.88 Cemf volts/Radian/Sec
<b>K(T):</b>	.62 Ft/Amp
<b>Minimum Ambient:</b>	0 C

<b>Enclosure Mtg Assem:</b>	36A167770GA201
<b>Instruction Book:</b>	GEH-3967N
<b>RPM:</b>	1750/2050
<b>Armature Amps:</b>	7.3
<b>Type:</b>	CDL182ACY
<b>Power Supply Code:</b>	K
<b>Insulation Class:</b>	F
<b>Ambient Max (°C):</b>	40 C
<b>Field Volts:</b>	200/100
<b>WK2:</b>	.28Lb Ft2
<b>Year of Manufacture:</b>	2016
<b>Max Altitude:</b>	3300 Ft

<b><u>Resistances at 25 Degrees C :</u></b>	
<b>Shunt Field:</b>	324 OHMS
<b>Armature:</b>	1.2836 OHMS
<b>Commutator Field:</b>	.5531 OHMS

<b><u>Inductances:</u></b>	
<b>Armature Circuit Total:</b>	26.770 mH Saturated
<b>Shunt Field:</b>	122.0 Henries Unsaturated

**Shunt Field Data:**

Shunt Field Current(1): .44 AMPS at Rated Load and 1750 RPM  
 Shunt Field Current(2): .38 AMPS at Rated Load and 1850 RPM  
 Shunt Field Current(3): .3 AMPS at Rated Load and 2050 RPM

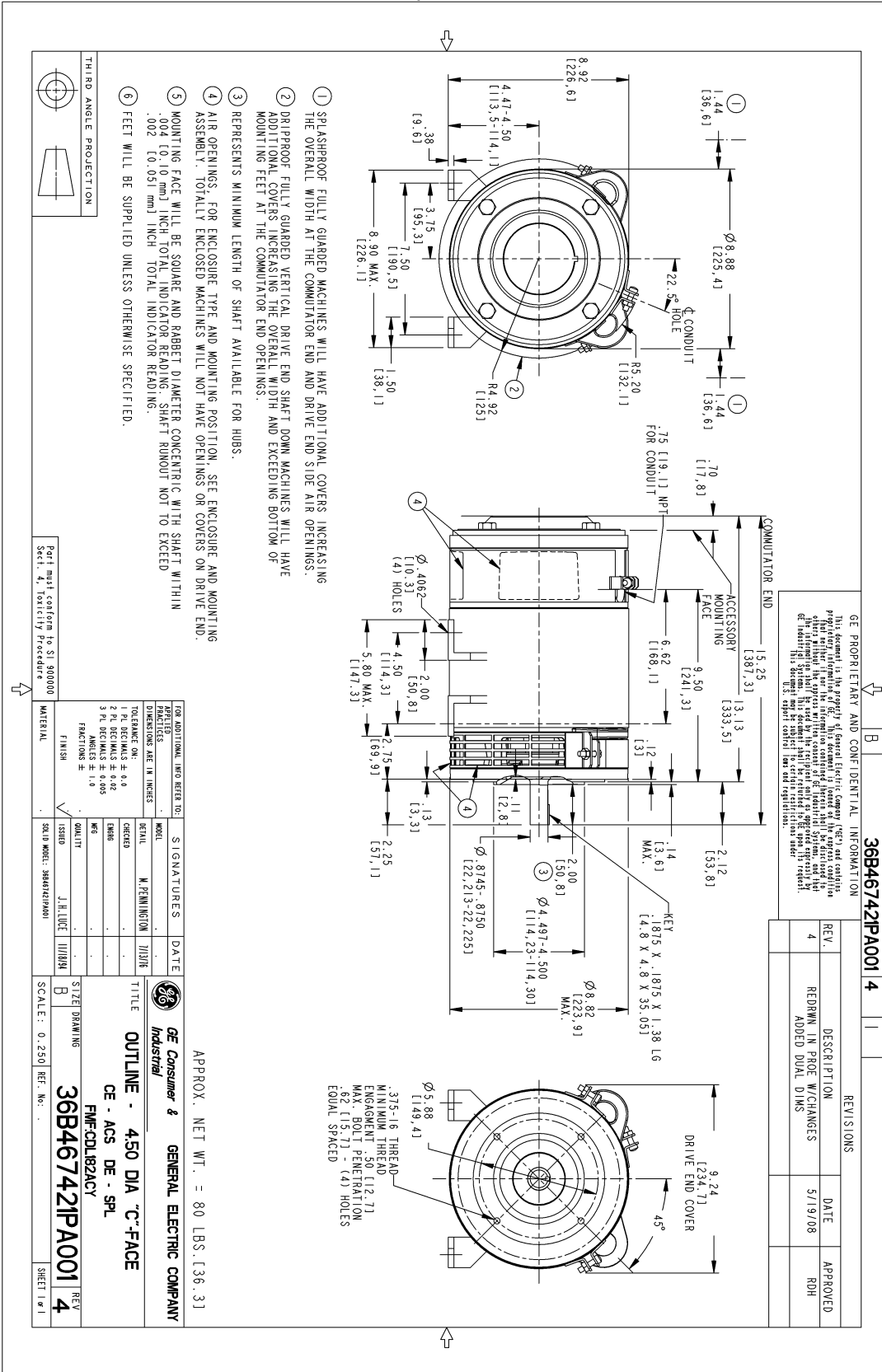
---

**Additional Machine Notes:**

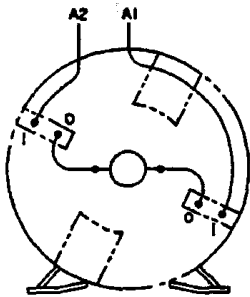
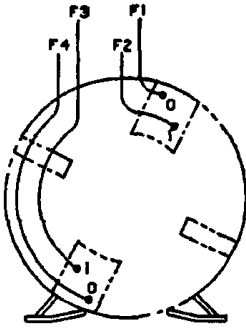
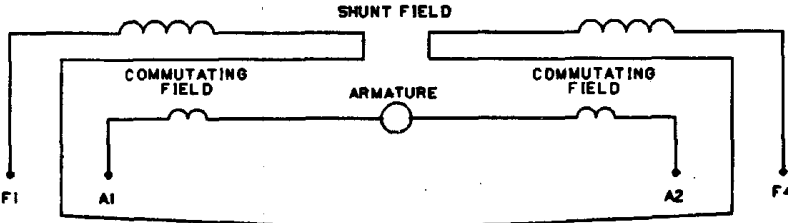
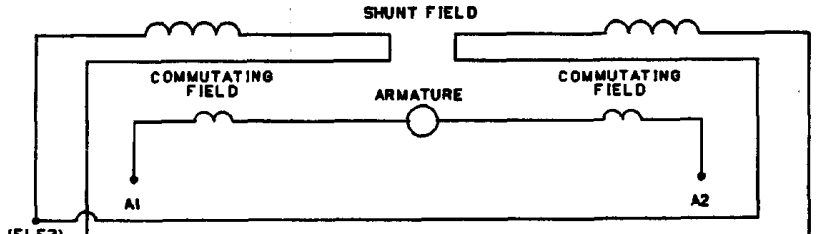
DRIPPROOF FULLY GUARDED - BALL BEARINGS  
 SPECIAL SHAFT DRIVE END ONLY - WITH FEET  
 WITH:  
 CSA STAMP  
 THERMOSTAT- NORMALLY CLOSED, AC RATING- 600V MAX-  
 .5A, 250V-1.5A, OR 125V-3A, DC RATING- 30V MAX-  
 1.5A. MAXIMUM CURRENT BASED ON INDUCTIVE LOADS UP  
 TO AND INCLUDING NEMA NO.5 CONTACTOR.

NAME:208009544 OBJECT:36B467421PA001 DATE:19-May-08 10:12:22

Marks:



Marks:

NO S.O.	<b>GENERAL ELECTRIC</b>	36A167960CA501 CONT ON SHEET	SH NO.				
REV 1 36A167960CA501 CONT ON SHEET	<b>TITLE</b> <b>CONNECTION DIAGRAM</b>						
SH NO.	FIRST MADE FOR 180AT 2 POLE						
DIRECT CURRENT MOTOR AND GENERATOR - SHUNT WOUND 1 OR 2 CIRCUIT SHUNT FIELD, 1 CIRCUIT COMMUTATING FIELD							
VIEWS FACING COMMUTATOR END							
							
COMMUTATING FIELD AND ARMATURE	SHUNT FIELD						
<p>ALL EXTERNAL LEADS ARE MARKED. ALL CONNECTIONS AND TERMINATIONS EXTERNAL TO MAGNET FRAME MUST BE INSULATED PER NATIONAL ELECTRICAL CODE AND SOUND LOCAL PRACTICES.</p> <p>SPACE HEATERS, WHEN SPECIFIED, WILL HAVE LEADS WITH TERMINAL MARKINGS H1 AND H2.</p> <p>THERMOSTAT, WHEN SPECIFIED, WILL HAVE LEADS WITH TERMINAL MARKINGS P1 AND P2.</p> <p>ENCIRCLED NUMBERS MAY BE USED FOR PART IDENTIFICATION.</p>							
<p>FOR HIGH NAMEPLATE EXCITATION VOLTAGE CONNECT SHUNT FIELD LEADS AS INDICATED</p>							
	(F2, F3)						
<p><b>MOTOR CONNECTIONS:</b> FOR CCW ROTATION FACING COMM END, MAKE LEADS F1 AND A1 THE SAME POLARITY. FOR CW ROTATION FACING COMM END, MAKE LEADS F1 AND A2 THE SAME POLARITY.</p>	<p><b>GENERATOR CONNECTIONS:</b> FOR CW ROTATION FACING COMM END, F1 POSITIVE WILL MAKE A2 POSITIVE. FOR CCW ROTATION FACING COMM END, F1 POSITIVE WILL MAKE A2 POSITIVE.</p>						
<p>FOR LOW NAMEPLATE EXCITATION VOLTAGE CONNECT SHUNT FIELD LEADS AS INDICATED</p>							
	(F2, F4)						
<p><b>MOTOR CONNECTIONS:</b> FOR CCW ROTATION FACING COMM END, MAKE LEADS (F1, F3) AND A1 THE SAME POLARITY. FOR CW ROTATION FACING COMM END, MAKE LEADS (F1, F3) AND A2 THE SAME POLARITY.</p>	<p><b>GENERATOR CONNECTIONS:</b> FOR CW ROTATION FACING COMM END, (F1, F3) POSITIVE WILL MAKE A2 POSITIVE. FOR CCW ROTATION FACING COMM END, (F1, F3) POSITIVE WILL MAKE A1 POSITIVE.</p>						
<p>94-10-12 NO S.O. DC HILL RETRACED</p>	<p>MADE BY N STEWART 75-08-05</p>	<p>APPROVALS FILE KC13-1</p>	<p>GE MOTORS ERIE</p>	<p>DIV OR DEPT LOCATION</p>	<p>36A167960CA501 CONT ON SHEET</p>	<p>SH NO.</p>	<p>DISTR TO 49-3131 4487 CAD</p>

ORIGINAL FRACING

C5X.A.36A167960CA501R01