

Product Information Packet

November 9, 2016

Data shown is for the current revision model #. Ensure your nameplate model # matches.

Model Number:	5KS445LAA204C
Catalog Number:	M7939
Instruction Manual:	GEI-56128
Connection Diagram:	GEM2034E-FIG7
Outline Drawing:	239CC600AA

Accessory Connection Diagrams			
Bearing Thermocouple:	None	Heater:	None
RTD:	None	Thermistor:	None
Thermostat:	None	Winding Thermocouple:	None
Bearing RTD:	None		

Table of Contents	
Specification	01
Performance Characteristics	02
Outline Drawing	03
Connection Drawing(s)	04

Marks:

MODEL NUMBER:	5KS445LAA204C	Estimated Weight:	1880 Lbs
Outline Drawing:	239CC600AA	Time Rating:	CONT
Connection Diagram:	GEM2034E-FIG7	Enclosure:	TEFC
Instruction Book:	GEI-56128	Encl Construction:	SD
Design Code:	44BD1117B	Ambient Max(°C):	40
Type:	KS	Alt Ambient Max(°C):	--
Frame:	445T	Insulation Class:	F
Phases:	3	NEMA Design:	A
Poles:	4	Nominal Efficiency:	95.8 %
Output Power:	150HP 111KW	Guaranteed Efficiency:	95.0
RPM:	1785	3/4 Load Efficiency:	95.9
Voltage:	575	KVA Code:	G
Hertz:	60	Max KVAR:	50.1
Amps - FL:	140.0	Power Factor:	84.0
Service Factor:	1.15	Bearing - DE:	6318ZC3S0
Alt Service Factor:	--	Bearing - ODE:	6318ZC3S0

Enclosure is Totally Enclosed Fan-Cooled

Stamped Nameplate Notes:

INVERTER DUTY PER NEMA MG1 PART 31
 ALTERNATE RATING FOR PWM CONTROL:
 1.0 SF VAR TORQUE RANGE 0-60 HZ

Additional Information:

4P - T EXTN
 700 CU IN - 3.00" NPT
 OIL RESISTANT SLEEVING ON LEADS
 F1 MOUNTING
 VIBRATION LIMIT 0.15 INCH PER SEC

Performance Characteristics

1st Winding 1st Connection

Design: 44BD1117B

Marks:

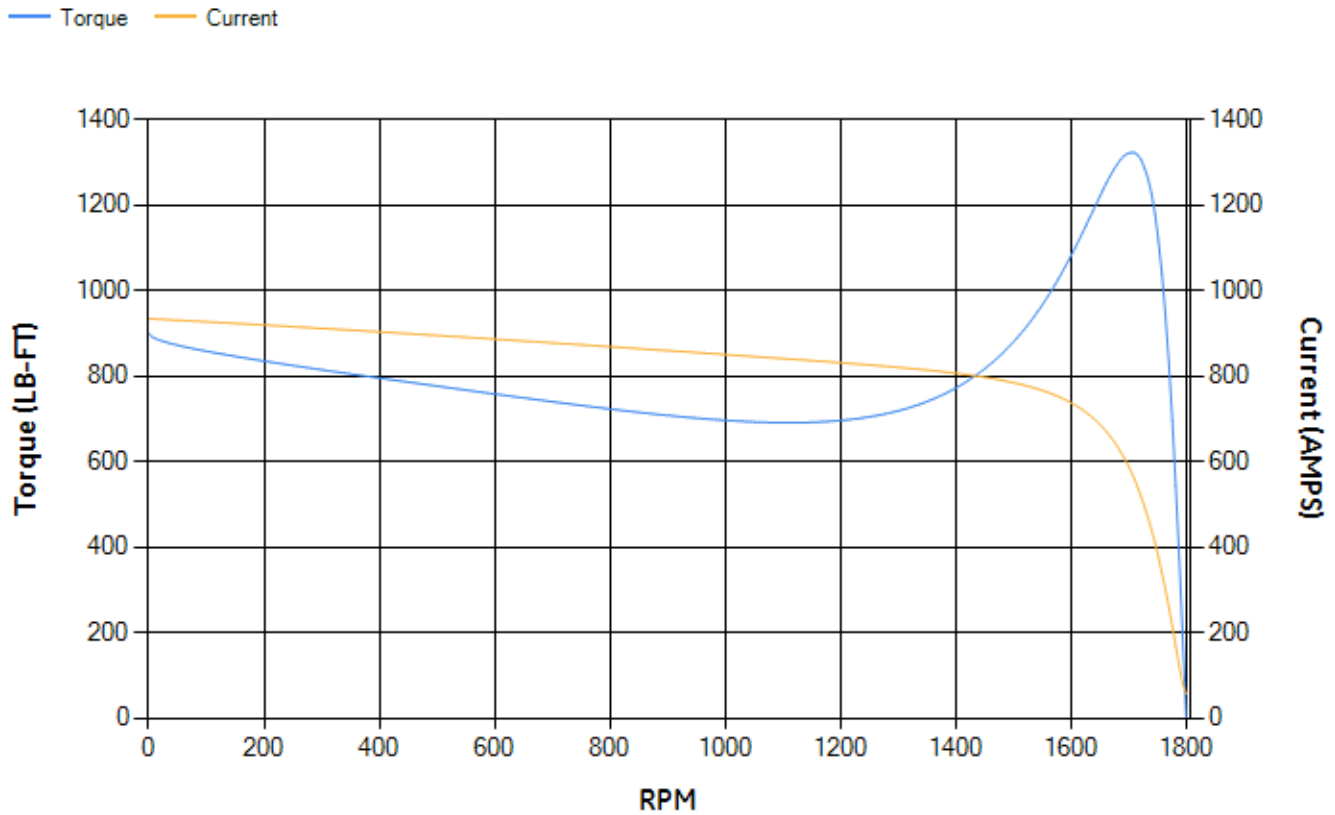
LOAD %	125.0	115.0	100.0	75.0	50.0	25.0	0.0
% EFF	95.34	95.52	95.94	95.89	95.52	93.26	0.00
% PF	86.26	85.63	84.19	79.59	69.43	46.5	3.09
AMPS	170.71	157.9	139.07	110.37	84.67	64.76	55.74

TORQ(FL)#FT	441.57	TORQ(LR)%FL	203.74	TORQ(BD)%FL	299.01
AMPS(LR)	933.78	PF AT START	0.32		

This motor is capable of two cold or one hot start with a maximum connected load inertia of 2064 Lb-Ft Sq (86.89 Kg-meter Sq)at 100% voltage, where the load torque varies with the square of the speed. Acceleration time with maximum inertia and the above load type is 19 seconds. Safe stall time at 100% voltage is 47 seconds cold, 22 seconds hot. Rotor inertia is 54.77 Lb-Ft Sq (2.31 Kg-meter Sq).

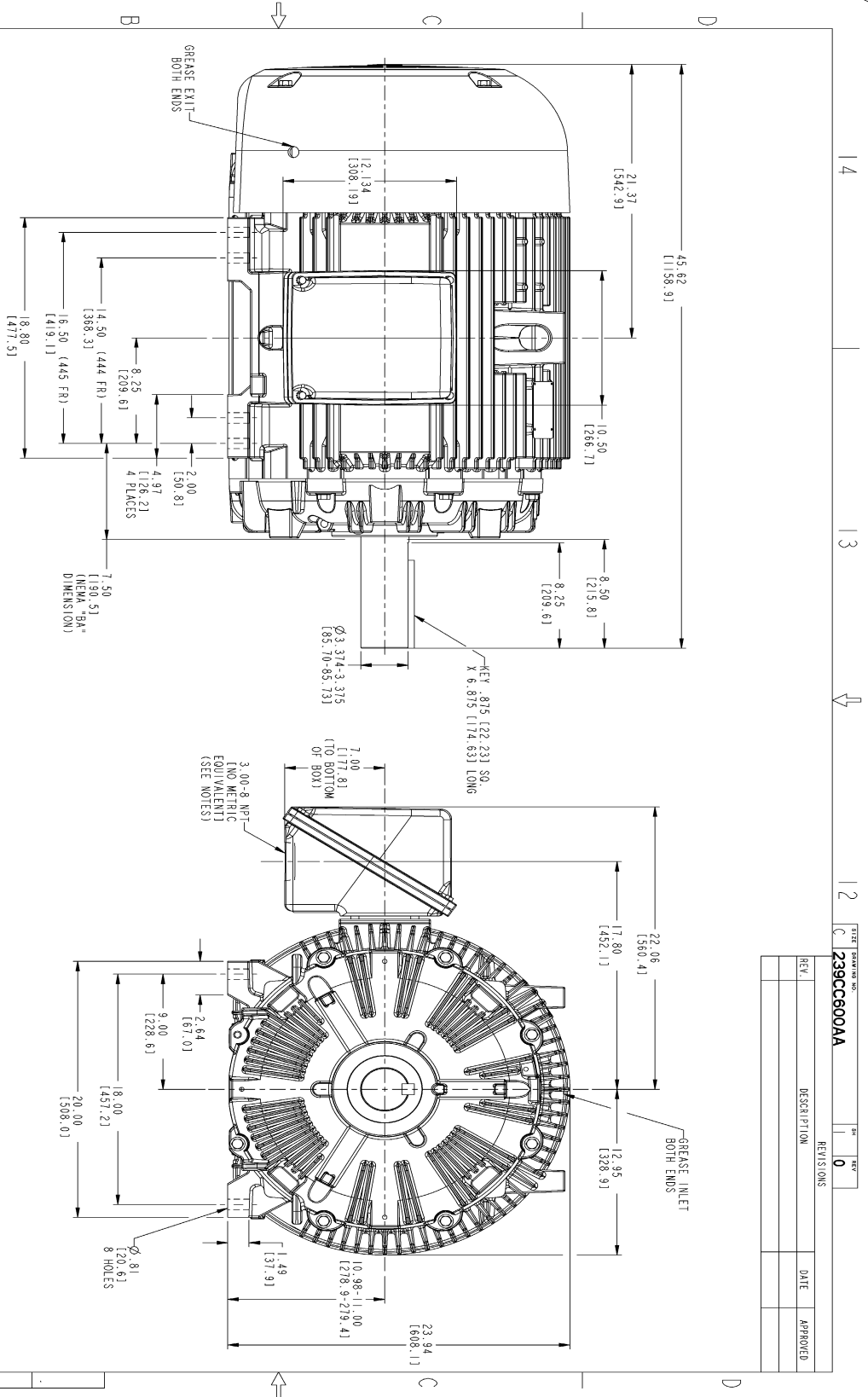
Open Circuit A-C:	0.677	Short Circuit D-C:	0.028
Short Circuit A-C:	0.037	X/R Ratio:	10.599
Stator Slots:	72	Rotor Slots:	58

Speed Torque Current Curve (First Connection, First Speed)

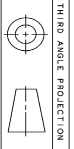


NAME:501352727 OBJECT:239CC600AA DATE:31-Jul-07 13:50:49

Marks:



- NOTES:
1. CONDUIT BOX MAY BE PLACED WITH THE ENTRANCE DOWN, UP OR ON EITHER I
 2. F-1 ASSEMBLY AS SHOWN.
 3. F-2 ASSEMBLY CONDUIT BOX ON OPPOSITE SIDE.
 4. BRACKETED DIMENSIONS ARE METRIC (MILLIMETERS).



REV.	DESCRIPTION	DATE	APPROVED

SIGNATURES	DATE	GE Industrial Systems	GENERAL ELECTRIC COMPANY Fort Wayne, Indiana
DESIGNED SALAN 01/21/07	01/21/07		
CHECKED SALAN 01/21/07			
ISSUED SALAN 01/21/07			
APPLIED PRACTICES			
DRAWING NO. 239CC600AA			
SCALE: 0.200 REF. NO.:			
DISTRIBUTION: MMP			

OUTLINE
444/445 T TEFC ESP
700 CU. IN. CONDUIT BOX

SHEET 1 OF 1

Marks:

Connection Diagram
GEM2034E-FIG7

