

Product Information Packet

November 7, 2016

Data shown is for the current revision model #. Ensure your nameplate model # matches.

Model Number:	5KS365ATE308A
Catalog Number:	E7026
Instruction Manual:	GEI-M1023
Connection Diagram:	GEM2034E-FIG8
Outline Drawing:	358B6219AB

Accessory Connection Diagrams			
Bearing Thermocouple:	None	Heater:	None
RTD:	None	Thermistor:	None
Thermostat:	None	Winding Thermocouple:	None
Bearing RTD:	None		

Table of Contents	
Specification	01
Performance Characteristics	02
Outline Drawing	03
Connection Drawing(s)	04

Marks:

MODEL NUMBER:	5KS365ATE308A	Estimated Weight:	790 Lbs
Outline Drawing:	358B6219AB	Time Rating:	CONT
Connection Diagram:	GEM2034E-FIG8	Enclosure:	DP
Instruction Book:	GEI-M1023	Encl Construction:	OPEN
Design Code:	36AD3004A	Ambient Max(°C):	40
Type:	KS	Alt Ambient Max(°C):	--
Frame:	365T	Insulation Class:	F
Phases:	3	NEMA Design:	A
Poles:	6	Nominal Efficiency:	94.1 %
Output Power:	50HP 37KW	Guaranteed Efficiency:	93.0
RPM:	1185	3/4 Load Efficiency:	94.7
Voltage:	460	KVA Code:	H
Hertz:	60	Max KVAR:	16.7
Amps - FL:	59.6	Power Factor:	81.5
Service Factor:	1.15	Bearing - DE:	6314
Alt Service Factor:	--	Bearing - ODE:	6313

Enclosure is Dripproof

Stamped Nameplate Notes:**Additional Information:**

6 POLE DP
 LRA: 409.7
 NO. OF MOTOR LEADS: 6
 CONDUIT BOX VOLUME (IN³): 550
 CONDUIT BOX MTL: STAMPED STEEL
 GREASE TYPE: CHEVRON SRI-2 POLYUREA GREASE
 NOT USABLE AT 200V
 50 HZ DATA: 50HP, 200/400V, 140.4/70.2 AMPS @ 1.0SF, 985 RPM
 SOUND POWER: 80
 DMK, 06/04, DATA UPDATE 11/2004
 INVERTER DUTY PER NEMA MG1 PART 31
 FOR VARIABLE TORQUE LOADS

Performance Characteristics

1st Winding 1st Connection

Design: 36AD3004A

Marks:

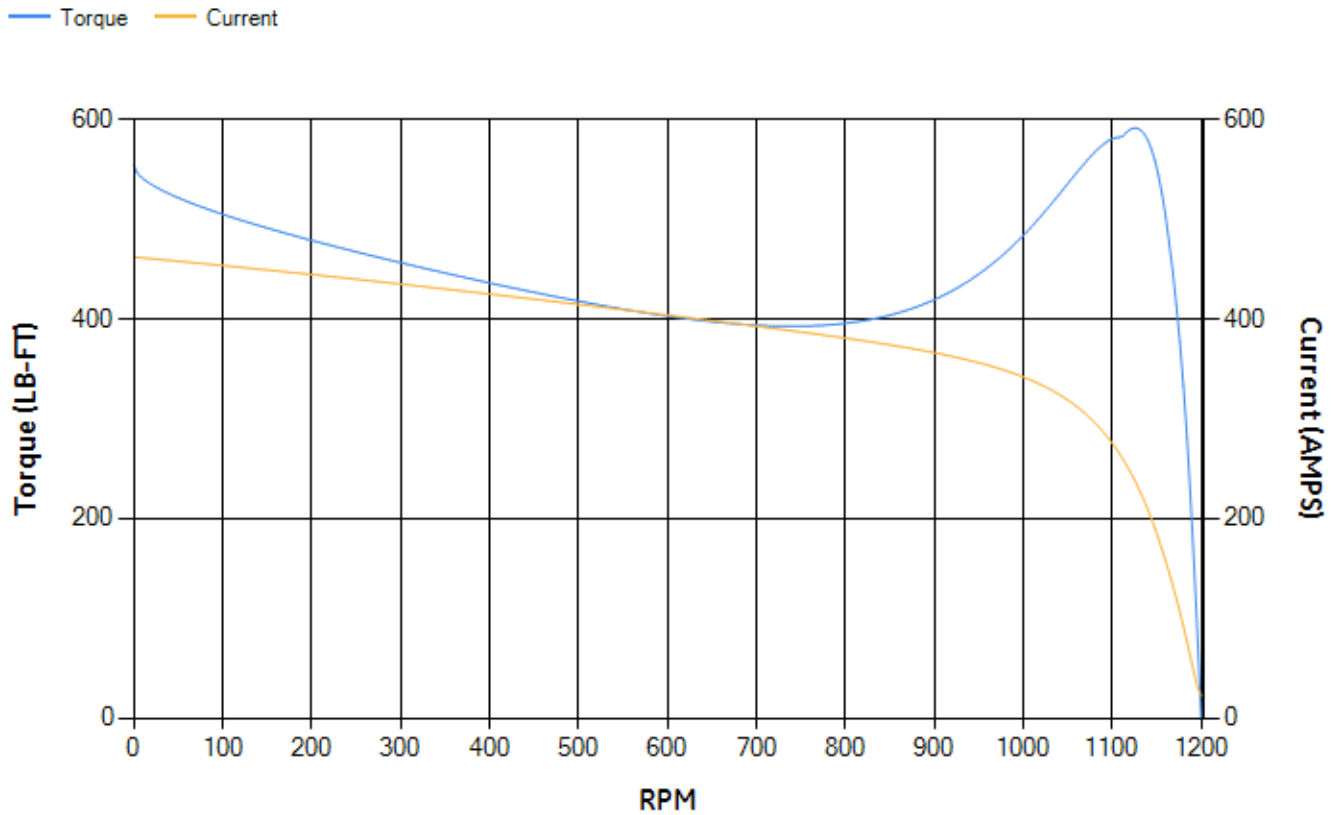
LOAD %	125.0	115.0	100.0	75.0	50.0	25.0	0.0
% EFF	93.98	94.22	94.72	94.73	94.24	91.31	0.00
% PF	84.36	83.96	82.86	78.93	69.74	48.11	4.37
AMPS	73.79	68.02	59.63	46.94	35.6	26.63	22.18

TORQ(FL)#FT	221.37	TORQ(LR)%FL	250.48	TORQ(BD)%FL	262.15
AMPS(LR)	461.98	PF AT START	0.35		

This motor is capable of two cold or one hot start with a maximum connected load inertia of 3638 Lb-Ft Sq (153.16 Kg-meter Sq)at 100% voltage, where the load torque varies with the square of the speed. Acceleration time with maximum inertia and the above load type is 37 seconds. Safe stall time at 100% voltage is 63 seconds cold, 50 seconds hot. Rotor inertia is 18.85 Lb-Ft Sq (0.79 Kg-meter Sq).

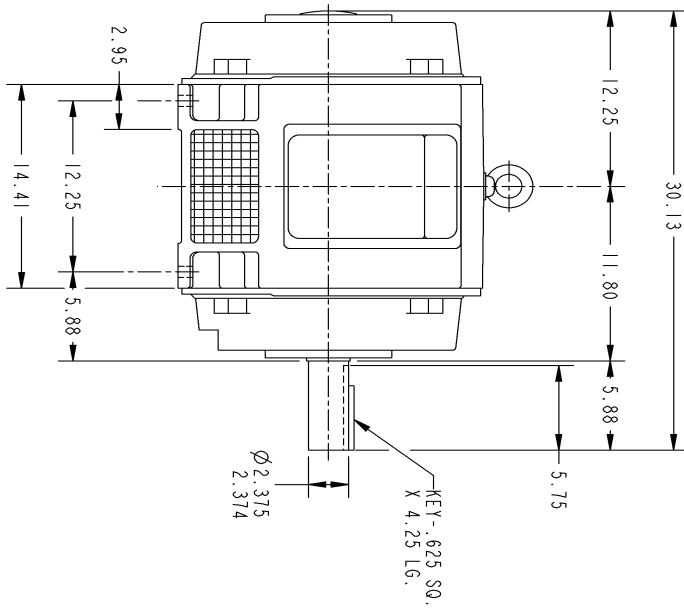
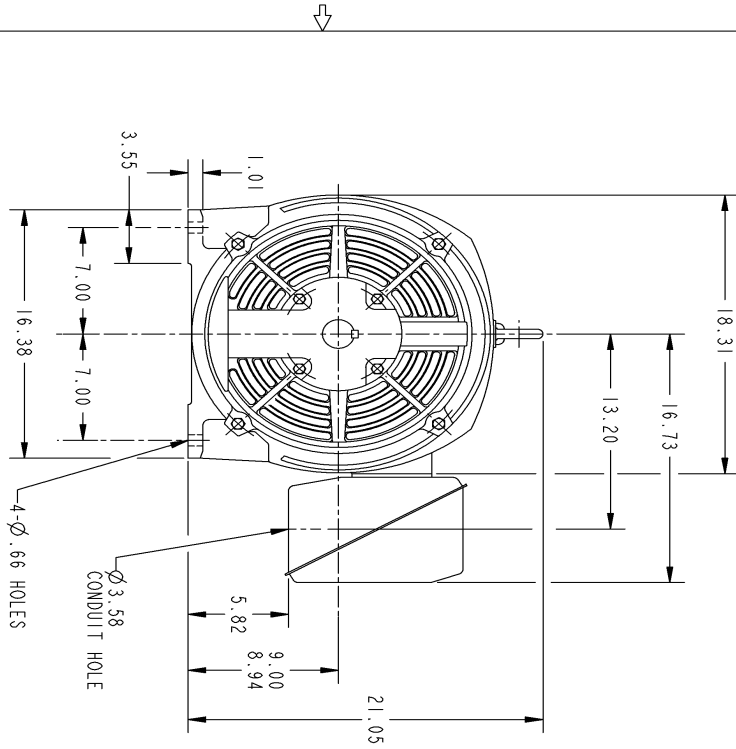
Open Circuit A-C:	0.586	Short Circuit D-C:	0.02
Short Circuit A-C:	0.026	X/R Ratio:	7.574
Stator Slots:	72	Rotor Slots:	58

Speed Torque Current Curve (First Connection, First Speed)



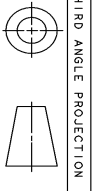
NAME:501053131 OBJECT:358B6219AB DATE:02-May-07 09:13:21

Marks:



NOTES :

1. CONDUIT BOX MAY BE PLACED WITH THE ENTRANCE DOWN, UP OR ON EITHER SIDE.
2. F-1 ASM AS SHOWN.
3. F-2 ASM - HAS CONDUIT BOX ON OPPOSITE SIDE.



THIRD ANGLE PROJECTION

SIZE: 358B6219AB
 GE PROPRIETARY INFORMATION
 This General is the property of General Electric Company (GE) and contains confidential information. It is not to be distributed, copied, or otherwise used without the written consent of GE. This General is intended for use only by the personnel of the Industrial Systems Division of GE. It is not to be used for any other purpose without the written consent of GE. This General shall be returned to GE upon its receipt and shall not be subject to certain restrictions under U.S. Export Control laws and regulations.

REV.	DESCRIPTION	DATE	APPROVED
1	ISAAC 07-0770	04/27/07	RHONDA

UNLESS OTHERWISE SPECIFIED: DIMENSIONS ARE IN INCHES TOLERANCE ON: 2 PL. DECIMALS ± .01 3 PL. DECIMALS ± .005 ANGLES ± 1°	SIGNATURES	DATE	 GENERAL ELECTRIC COMPANY Fort Wayne, Indiana
DRAWN: PRADHAKAR 03/27/03	CHECKED: PRADHAKAR 03/27/03	ISSUED: PRADHAKAR 03/27/03	
MATERIAL: APPLIED PRACTICES SIZE DRAWING: B SCALE: DRAWING SCALE 365T - OPEN DRIP PROOF 358B6219AB REV. 1 SHEET 1 OF 1			

DISTRIBUTION:

Marks:

Connection Diagram
GEM2034E-FIG8

